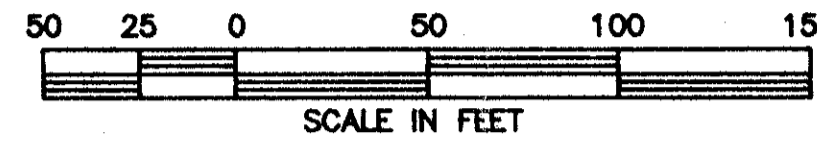


BENOIST FARMS CORPORATE PARK - P.I.D.

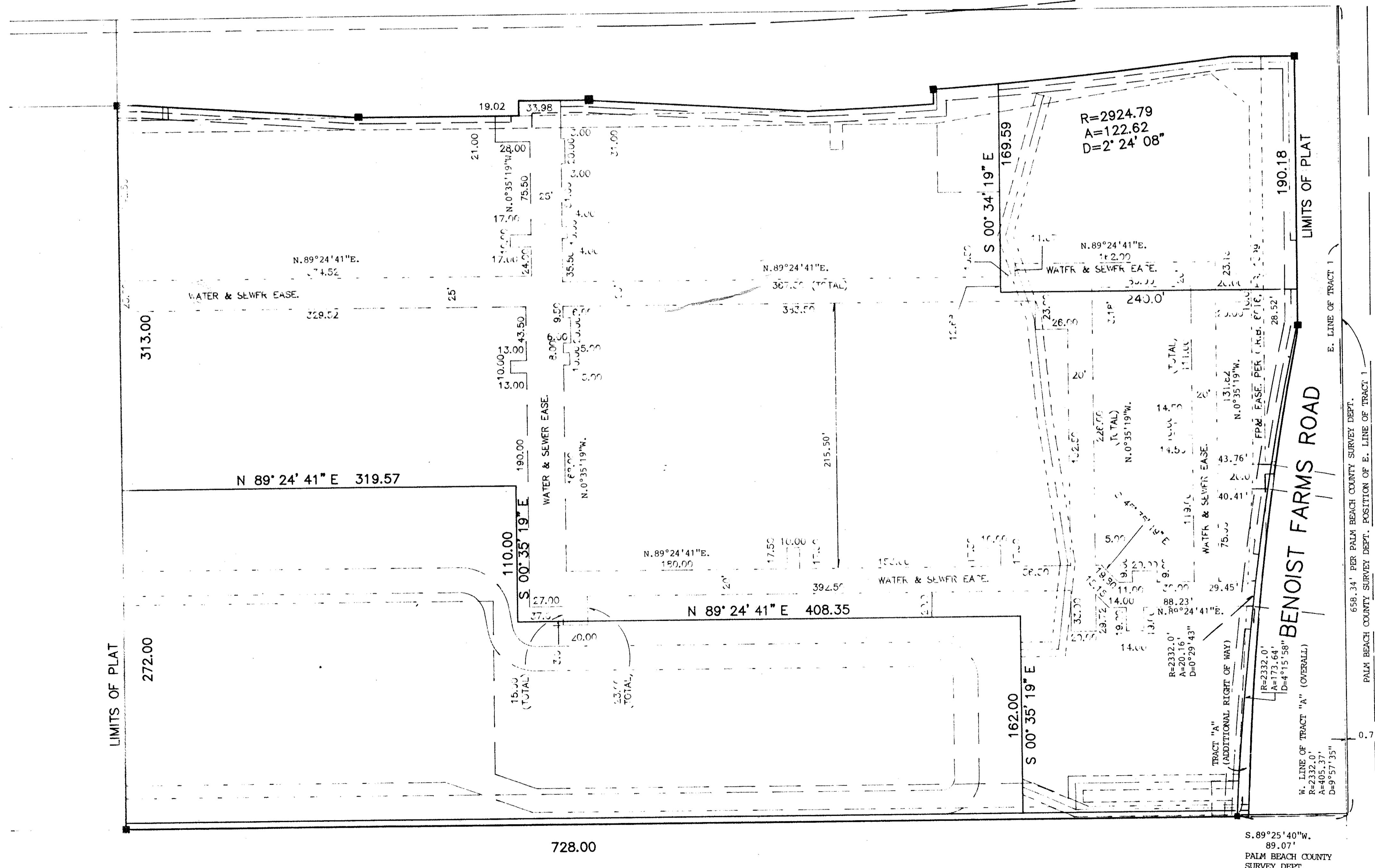
0597-001

80

BEING A REPLAT OF PART OF TRACT 1, BLOCK 7 OF THE PALM BEACH FARMS CO. PLAT NO. 3
 AS RECORDED IN PLAT BOOK 2, PAGES 45 THROUGH 54 OF THE PUBLIC RECORDS OF PALM BEACH COUNTY, FLORIDA
 IN SECTION 32, TOWNSHIP 43 SOUTH, RANGE 42 EAST
 PALM BEACH COUNTY, FLORIDA
 SHEET 3 OF 3 SHEETS
 AUGUST 1991

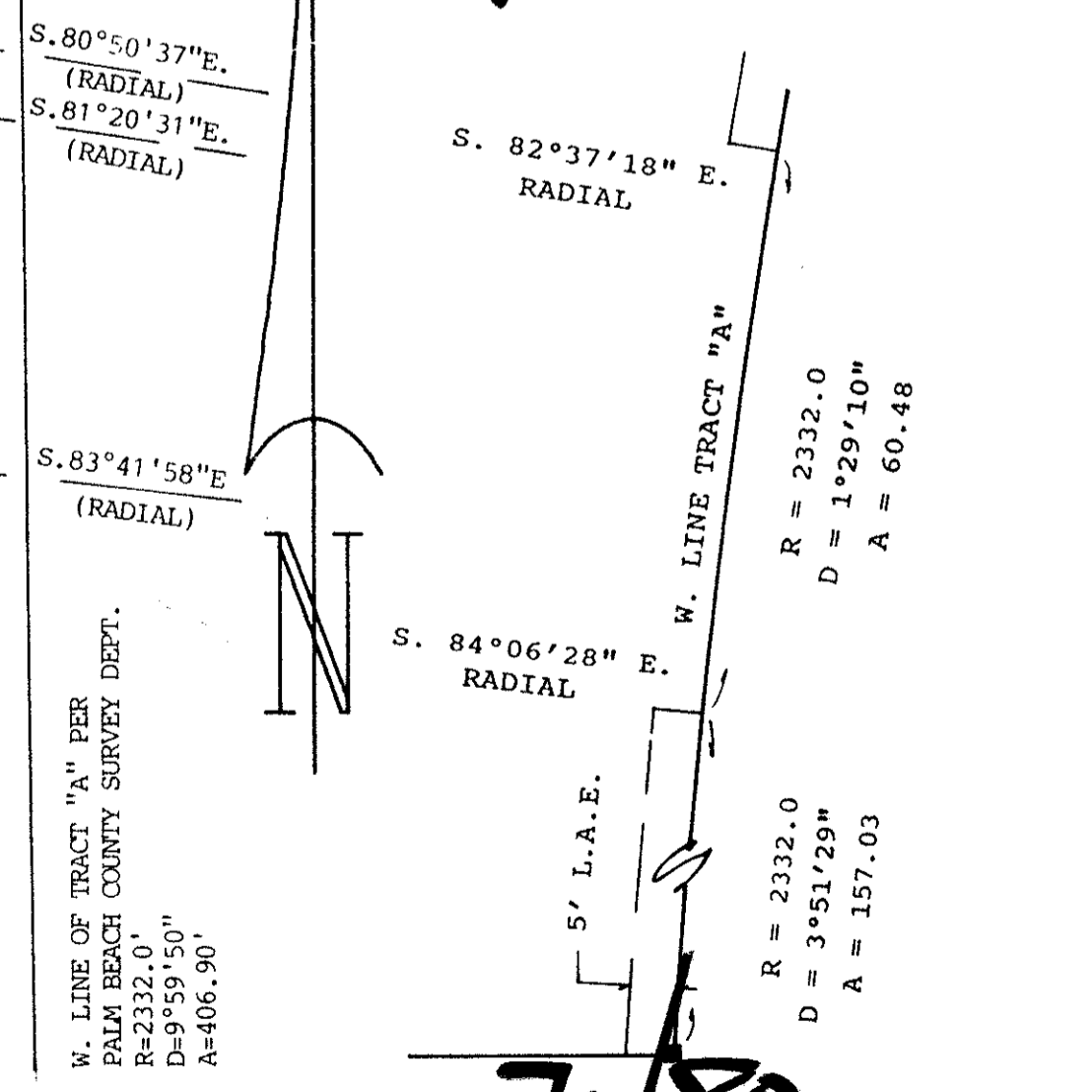


BELVEDERE ROAD



- LEGEND**
- DENOTES PERMANENT REFERENCE MONUMENT
 - R.L.S. NO. 3888
 - A = ARC LENGTH
 - C = CENTERLINE
 - BLK. = BLOCK
 - D = CENTRAL ANGLE
 - DEPT. = DEPARTMENT
 - D.E. = DRAINAGE EASEMENT
 - EASE. = EASEMENT
 - FP & L = FLORIDA POWER & LIGHT COMPANY
 - L.A.E. = LIMITED ACCESS EASEMENT
 - MAINT. = MAINTENANCE
 - O.R.B. = OFFICIAL RECORD BOOK
 - PG. = PAGE
 - P.B. = PLAT BOOK
 - P.C. = POINT OF CURVATURE
 - P.O.B. = POINT OF BEGINNING
 - R = RADIUS
 - R.L.S. = REGISTERED LAND SURVEYOR
 - TR. = TRACT

PET. 86-89



70/80

SUBDIVISION: BENOIST FARMS CORPORATE PARK, P.I.D.
 BOOK: 70
 FLOOD ZONE: B
 QUAD: #40
 FLOOD MAP: #150A
 ZONING: [blank]
 ZIP CODE: 33411
 NAME: SAME
 DATE: 8/27/91

T&E = 875

0597-001

SCALE: 1"=50'	NICK MILLER, INC. Surveying	DRAWN BY:
DATE: AUG. 1991	Planning & Development Consultants	CHK
BENOIST FARMS CORPORATE PARK - P.I.D.		
2560 RCA Blvd. • Suite 105 Palm Beach Gardens, Florida 33410 (407)627-5200		DRAWING NUMBER 89102U