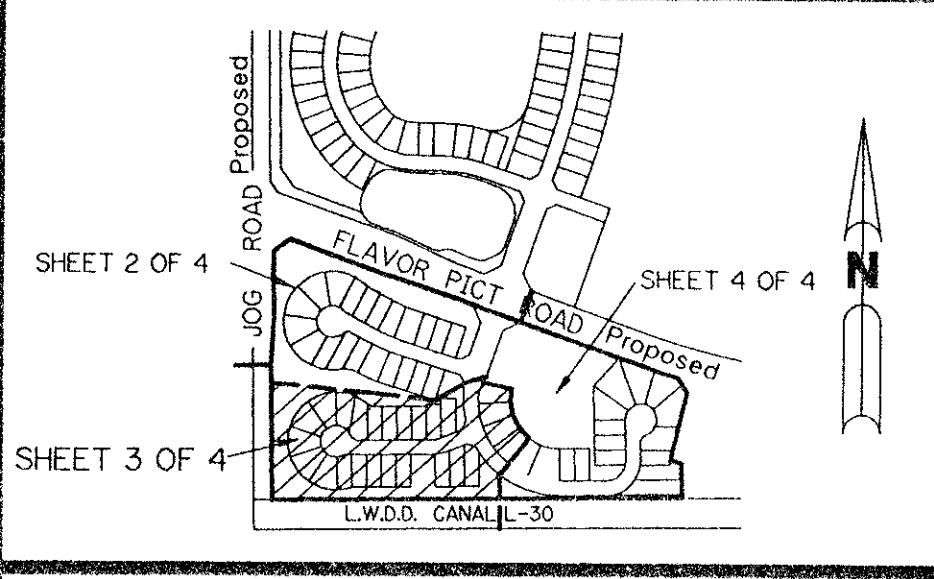
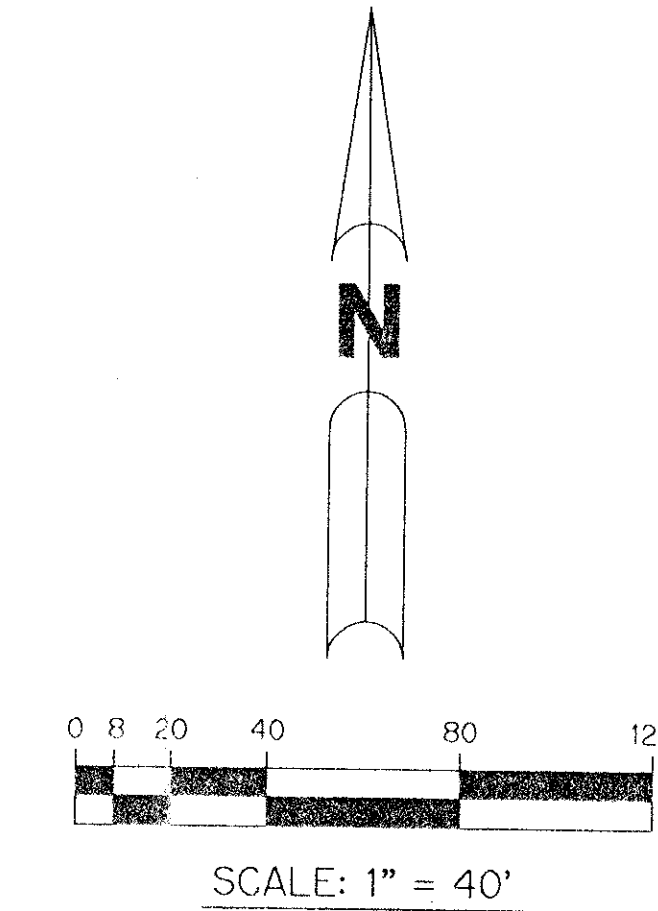


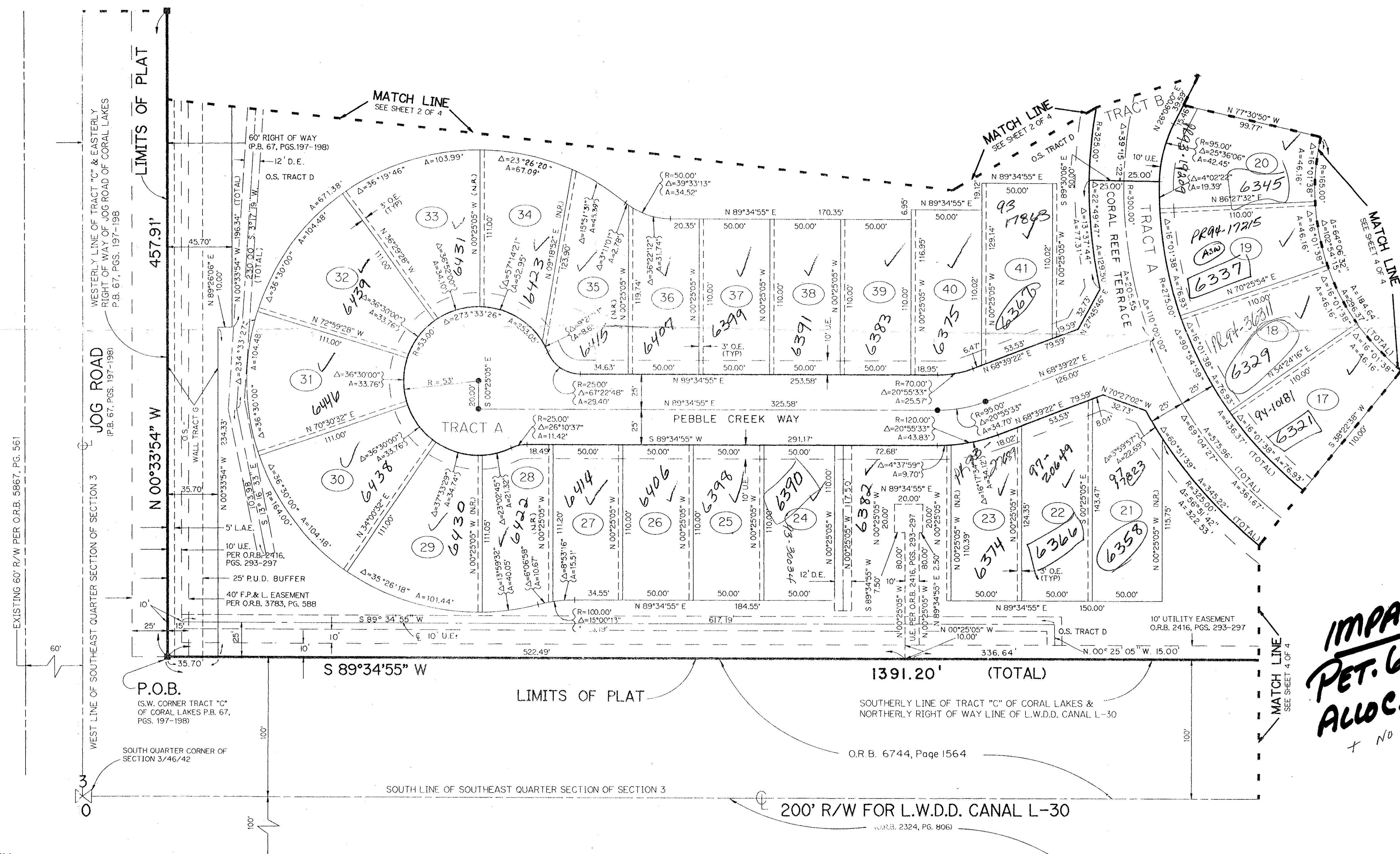
# PLAT OF CORAL LAKES II

BEING A REPLAT OF A PORTION OF TRACT "C"  
OF THE PLAT OF CORAL LAKES AS RECORDED IN PLAT BOOK 67, PAGES 197-198  
LYING IN SECTION 3, TOWNSHIP 46 SOUTH, RANGE 42 EAST,  
PALM BEACH COUNTY, FLORIDA

JANUARY, 1993 SHEET 3 OF 4



KEY MAP  
N.T.S.



- LEGEND**
- L.A.E. - LIMITED ACCESS EASEMENT
  - R - RADIUS
  - Δ - DELTA ANGLE
  - P.B. - PLAT BOOK
  - P.G.S. - PAGES
  - O.R. - OFFICIAL RECORD
  - P.U.D. - PLANNED UNIT DEVELOPMENT
  - P.L.S. - PROFESSIONAL LAND SURVEYOR
  - N.R. - NOT RADIAL
  - ST. - SURVEY TIE LINE
  - - PERMANENT REFERENCE MONUMENT, PLS #4901
  - - PERMANENT CONTROL POINT, PLS #4901
  - - OVERHANG EASEMENT
  - U.E. - UTILITY EASEMENT
  - D.E. - DRAINAGE EASEMENT
  - FPL - FLORIDA POWER AND LIGHT COMPANY
  - FE - FLOOD PLAIN EASEMENT
  - OS - OPEN SPACE
  - O.R.B. - OFFICIAL RECORD BOOK
  - R.O.W. - RIGHT-OF-WAY
  - L.M.E. - LAKE MAINTENANCE EASEMENT
  - L.M.A.E. - LAKE MAINTENANCE ACCESS EASEMENT
  - = EXISTING P.R.M. # 2633

**IMPACT FEE**  
**PET. 614-013**  
**ALOC. #0001**  
+ NO SCHOOLS

SUBDIVISION OF PLAT OF CORAL LAKES II  
BOOK 70  
PAGE 19  
FLOOD ZONE D  
QUAD # 36  
SE  
ZIP CODE 33437  
RIP NAME SAME  
3/14/93

THIS INSTRUMENT PREPARED BY  
RAFAEL FILIPPELLI P.L.S. 4901 STATE OF FLORIDA  
LAWSON, NOBLE AND ASSOCIATES, INC.  
ENGINEERS PLANNERS SURVEYORS  
WEST PALM BEACH, FLORIDA

VILADELRAY  
(P.B. 36, PGS. 19-22)

0614-004

CORAL LAKES II 70/119 SHEET 3 OF 4