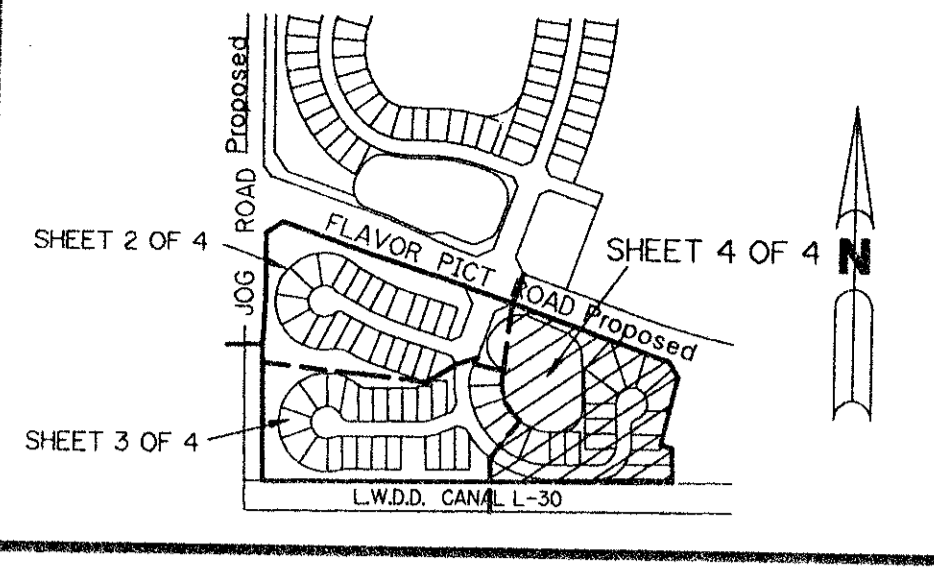


0614-004

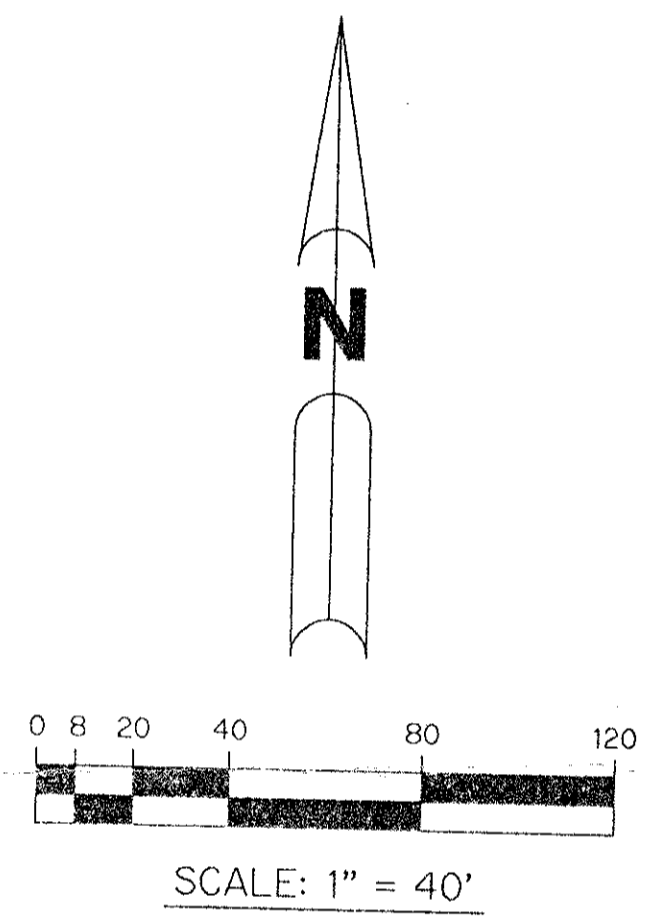
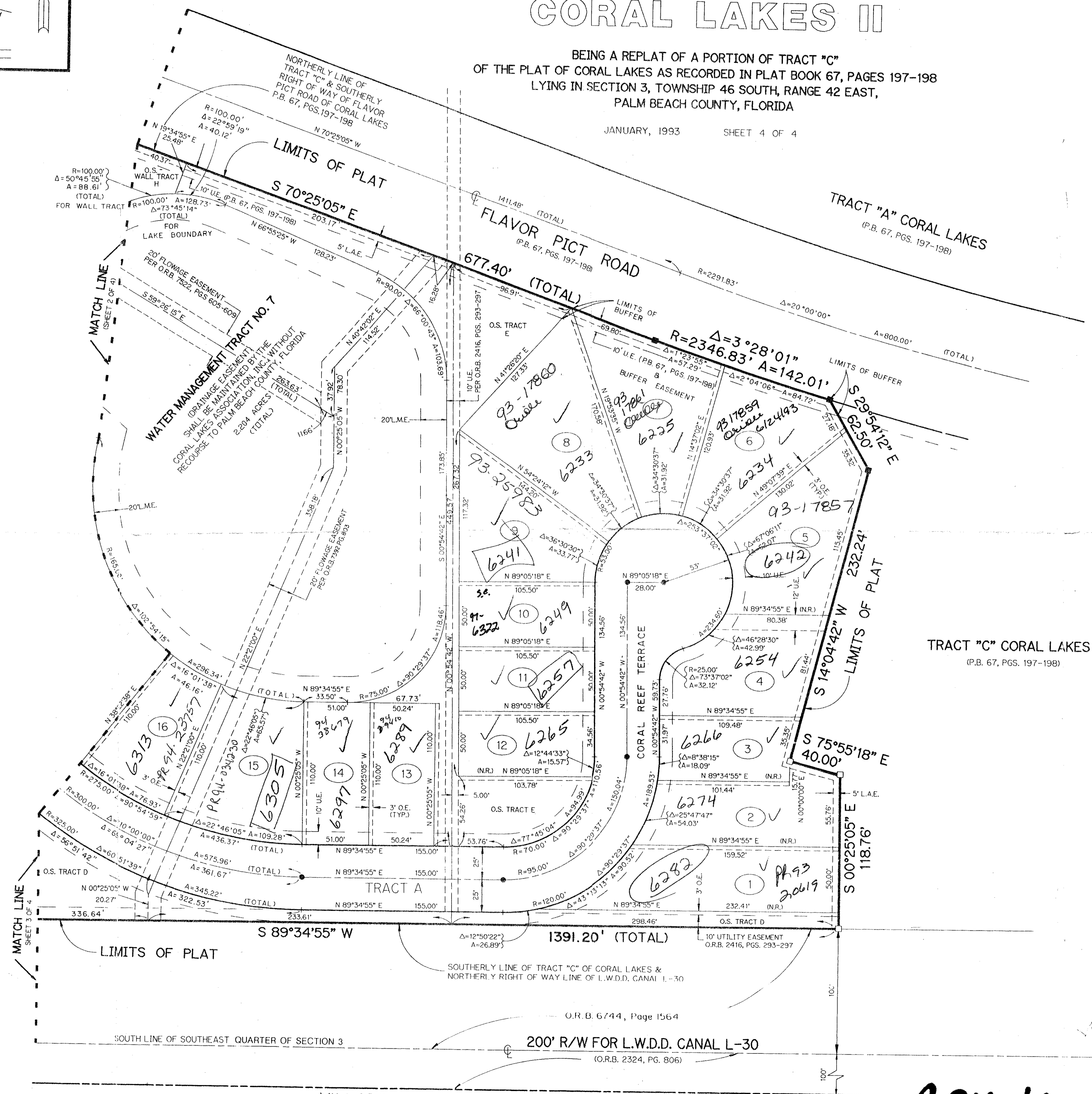
PLAT OF CORAL LAKES II

BEING A REPLAT OF A PORTION OF TRACT "C" OF THE PLAT OF CORAL LAKES AS RECORDED IN PLAT BOOK 67, PAGES 197-198 LYING IN SECTION 3, TOWNSHIP 46 SOUTH, RANGE 42 EAST, PALM BEACH COUNTY, FLORIDA

JANUARY, 1993 SHEET 4 OF 4



KEY MAP N.T.S.



TAR = 457

IMPACT FEE
PET. 614-013
ALLOC. \$0001

THIS INSTRUMENT PREPARED BY
RAFAEL FILIPPELLI P.L.S. 4901 STATE OF FLORIDA
LAWSON, NOBLE AND ASSOCIATES, INC.
ENGINEERS PLANNERS SURVEYORS
WEST PALM BEACH, FLORIDA

0614-004

CORAL LAKES II

79/120

SUBDIVISION # PLAT OF CORAL LAKES II
BOOK 70 PAGE 120
FLOOD ZONE 6
QUAD # 36
SE
PLAT NAME SAME
3/26/92
ZIP CODE 33437

- LEGEND
- L.A.E. - LIMITED ACCESS EASEMENT
 - R - RADIUS
 - Δ - DELTA ANGLE
 - P.B. - PLAT BOOK
 - P.G.S. - PAGES
 - O.R. - OFFICIAL RECORD
 - P.U.D. - PLANNED UNIT DEVELOPMENT
 - P.L.S. - PROFESSIONAL LAND SURVEYOR
 - N.R. - NOT RADIAL
 - ST. - SURVEY TIE LINE
 - - PERMANENT REFERENCE MONUMENT, PLS #4901
 - - PERMANENT CONTROL POINT, PLS #4901
 - O.E. - OVERHANG EASEMENT
 - U.E. - UTILITY EASEMENT
 - D.E. - DRAINAGE EASEMENT
 - F.P.L. - FLORIDA POWER AND LIGHT COMPANY
 - FE - FLOOD PLAIN EASEMENT
 - OS - OPEN SPACE
 - O.R.B. - OFFICIAL RECORD BOOK
 - H.O.W. - RIGHT-OF-WAY
 - L.M.E. - LAKE MAINTENANCE EASEMENT
 - L.M.A.F. - LAKE MAINTENANCE ACCESS EASEMENT
 - ET - EXISTING PATH # 26.33

Parcels 15416
Villa Del Rey PUD
1/14 1994 - coral lakes

O.R.B. 6744, Page 1564

200' R/W FOR L.W.D.D. CANAL L-30
(O.R.B. 2324, PG. 806)

VILLADELRAY (P.B. 36, PGS. 19-22)