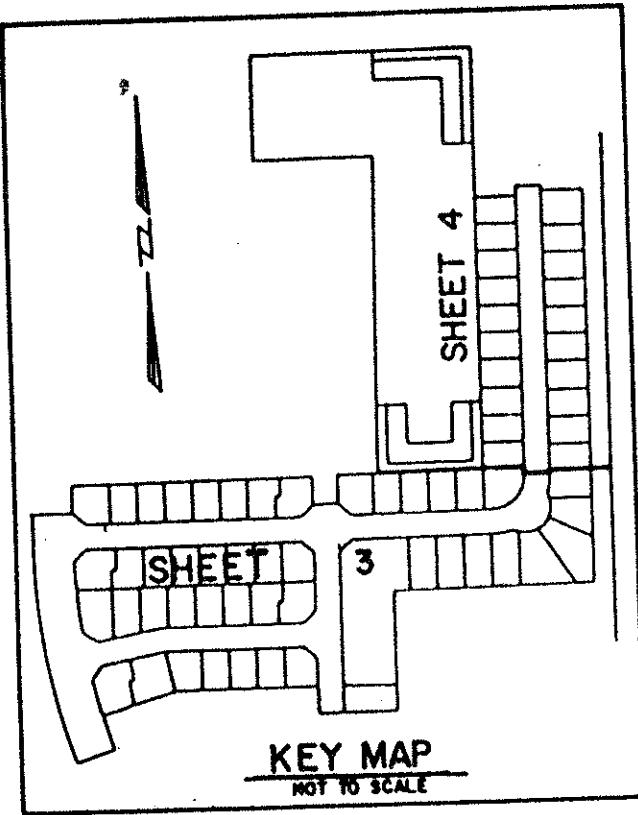


# LEE ESTATES PLAT II

A PLANNED UNIT DEVELOPMENT  
LYING IN SECTION 35, TOWNSHIP 44 SOUTH, RANGE 42 EAST,  
PALM BEACH COUNTY, FLORIDA  
SHEET 4 OF 4



STATE OF FLORIDA  
COUNTY OF PALM BEACH  
This Plat was filed for record at \_\_\_\_\_  
M. this \_\_\_\_\_ day of \_\_\_\_\_, 19\_\_\_\_  
and duly recorded in Plat Book No. \_\_\_\_\_  
on Page \_\_\_\_\_  
DOROTHY H. WILKES, Clerk of the Circuit Court  
By \_\_\_\_\_ D.C.

L. W. D. D. CANAL E-3  
(O.R.B. 2883, PAGE 1564)

EAST LINE OF S.W. 1/4 OF SECTION 35/44/42

NOT PLATTED

PRISCILLA LANE

MATCH TO SHEET 3

NOT PLATTED

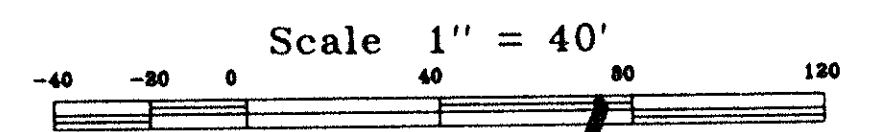
TRACT "L-2"  
WATER MANAGEMENT TRACT  
( TO BE MAINTAINED BY THE LEE ESTATES HOMEOWNERS ASSOCIATION, INC. )

NOT PLATTED

NOT PLATTED

SUBDIVISION \* LEE ESTATES PLAT II  
BOOK 70 PAGE 126  
FLOOD ZONE 0 FLOOD MAP # 175B  
QUAD # 25 ZONING RS  
SE 90-16 ZIP CODE 33463  
PUD NAME SAME  
85141102

T&Z = 349



70/126

Landmark Surveying & Mapping Inc.  
1850 FOREST HILL BOULEVARD  
PH. (407)433-5405 SUITE 100 W.P.B. FLORIDA

**LEE ESTATES PLAT II**