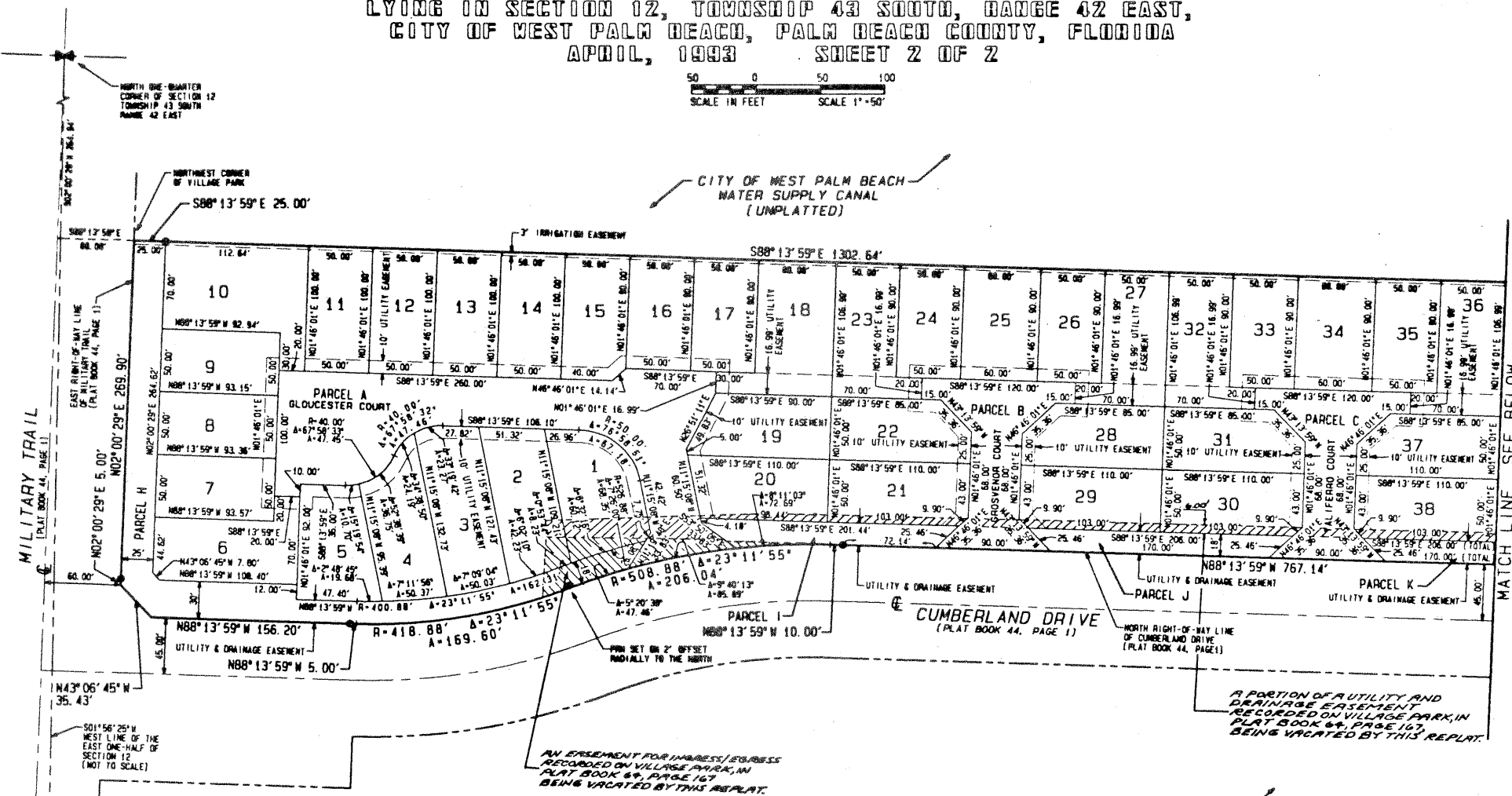


BRITTANY VILLAGE

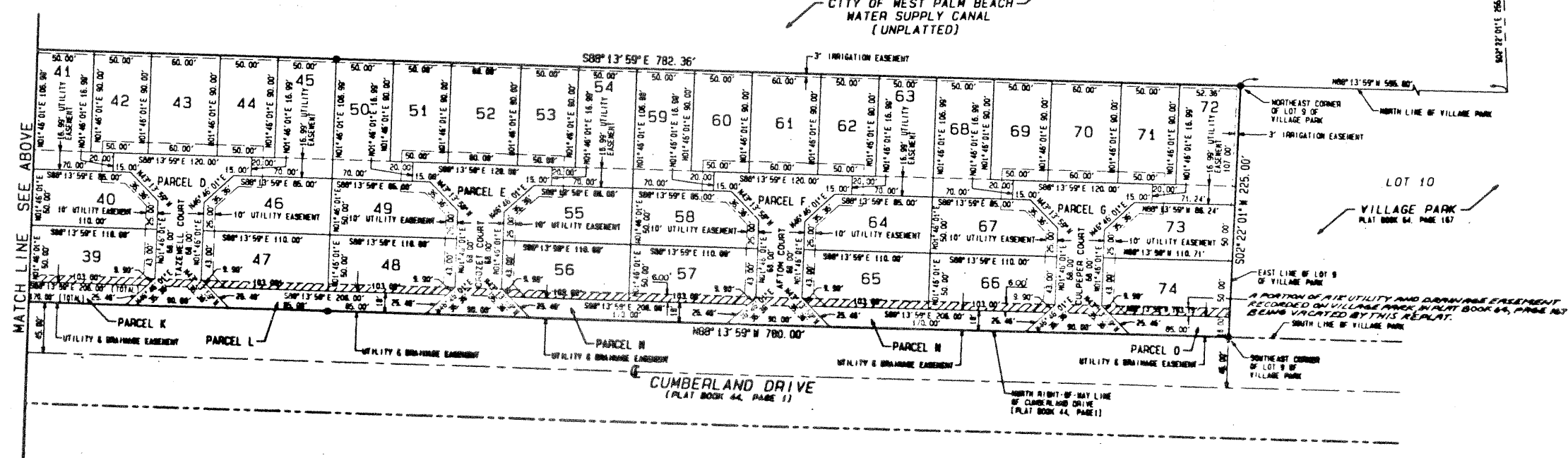
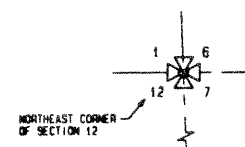
BEING A REPLAT OF ALL OF LOTS 1 THRU 9, INCLUSIVE, OF VILLAGE PARK AS RECORDED IN PLAT BOOK 64, PAGE 167 OF THE PUBLIC RECORDS OF PALM BEACH COUNTY, FLORIDA LYING IN SECTION 12, TOWNSHIP 43 SOUTH, RANGE 42 EAST, CITY OF WEST PALM BEACH, PALM BEACH COUNTY, FLORIDA
APRIL, 1993 SHEET 2 OF 2



STATE OF FLORIDA
COUNTY OF PALM BEACH
This plat was filed for record at _____ in _____ of _____ 1993, and duly recorded in Plat Book No. _____ on Pages _____ thru _____
DOROTHY WILKEM
Clerk Circuit Court
By _____ D C



- LEGEND**
- Permanent Reference Monument (P.L.S. #4880 except as noted)
 - Permanent Control Point
 - Radius
 - Delta
 - Arc Length
 - Plat Book
 - Official Record Book
- DENOTES UTILITY & DRAINAGE EASEMENT BEING VACATED WITH THIS PLAT (PORTIONS NOT SHOWN FOR CLARITY)
- DENOTES INGRESS/EGRESS EASEMENT BEING VACATED WITH THIS PLAT (PORTIONS NOT SHOWN FOR CLARITY)



COMPUTED D. B. B. B.
DRAWN D. B. B. B.
CHECKED J. J. J. J.
APPROVED _____
JOB NO. 92-387

11887