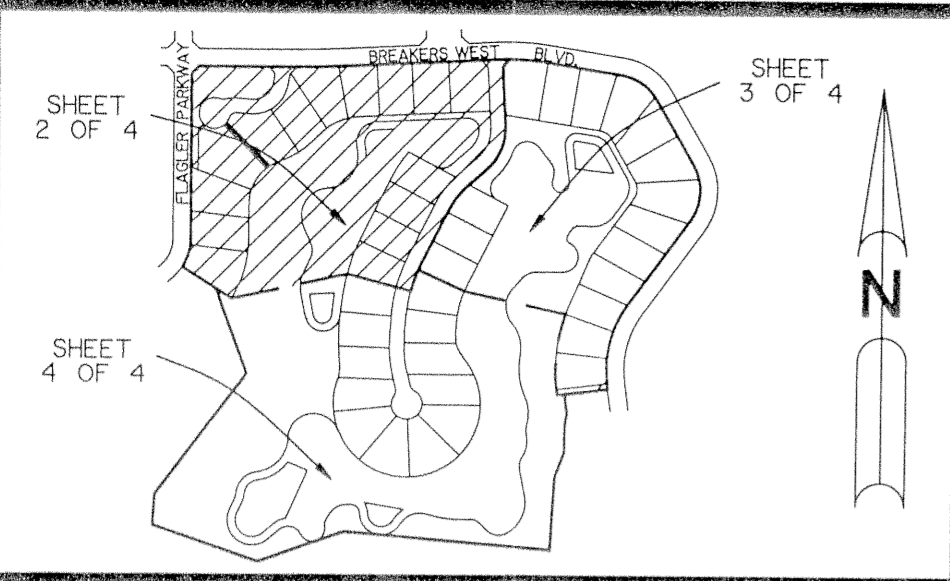
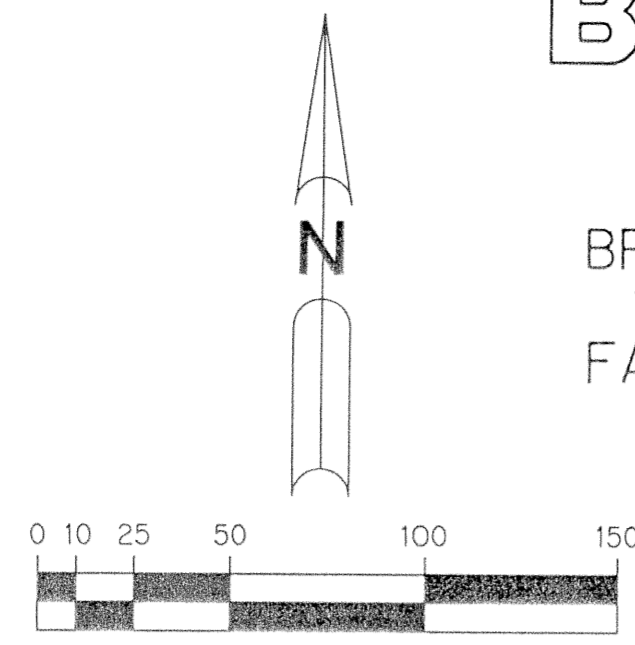


BREAKERS WEST PLAT 18C.R.

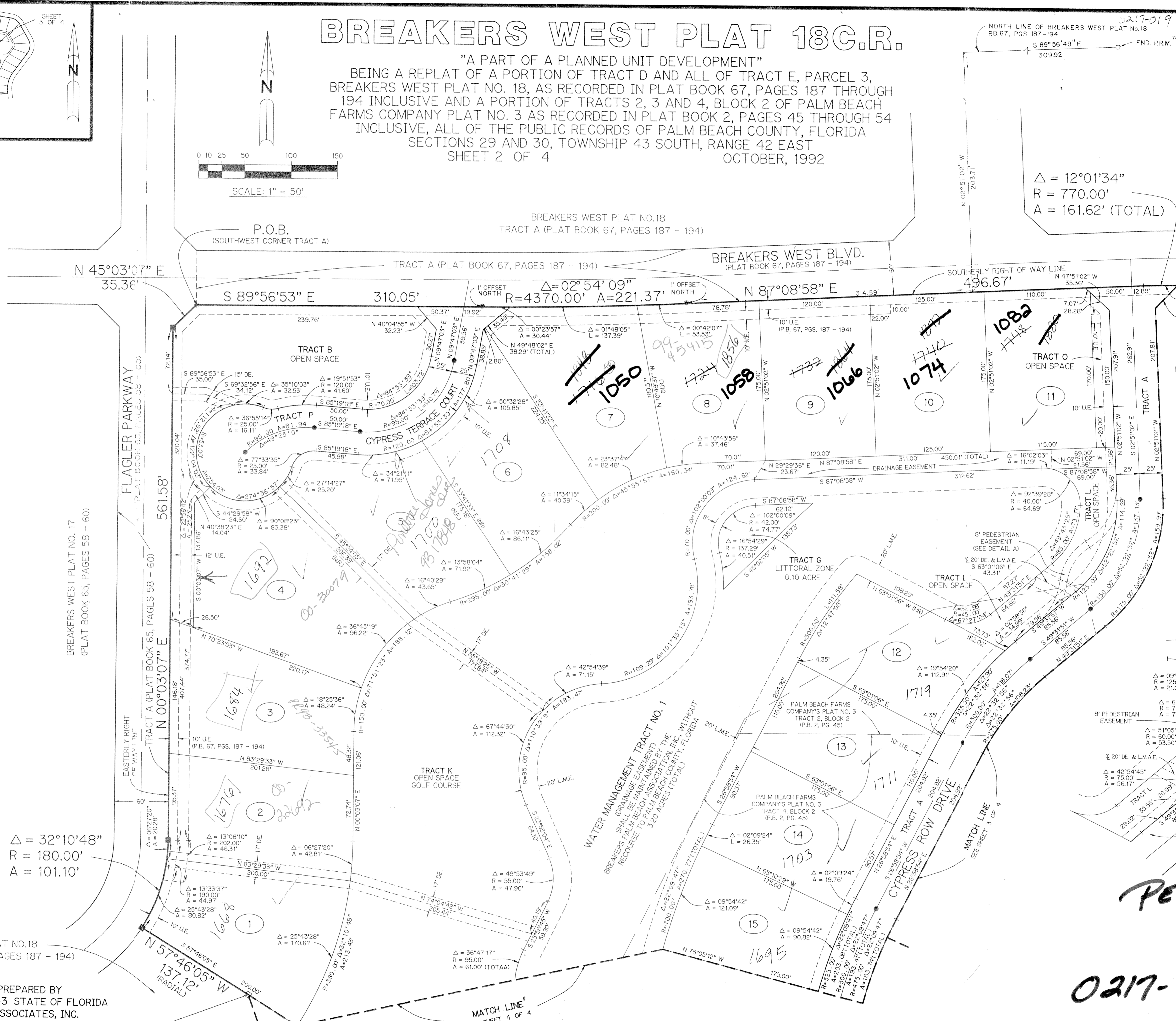
"A PART OF A PLANNED UNIT DEVELOPMENT"
 BEING A REPLAT OF A PORTION OF TRACT D AND ALL OF TRACT E, PARCEL 3,
 BREAKERS WEST PLAT NO. 18, AS RECORDED IN PLAT BOOK 67, PAGES 187 THROUGH
 194 INCLUSIVE AND A PORTION OF TRACTS 2, 3 AND 4, BLOCK 2 OF PALM BEACH
 FARMS COMPANY PLAT NO. 3 AS RECORDED IN PLAT BOOK 2, PAGES 45 THROUGH 54
 INCLUSIVE, ALL OF THE PUBLIC RECORDS OF PALM BEACH COUNTY, FLORIDA
 SECTIONS 29 AND 30, TOWNSHIP 43 SOUTH, RANGE 42 EAST
 SHEET 2 OF 4
 OCTOBER, 1992



KEY MAP
N.T.S.



151



PET. 73-219
5/2/2/G

(DETAIL A)
SCALE 1"=50'

PET. 73-219

0217-019

BREAKERS WEST PLAT 18C.R. 70/151

TAZ = 817

SUBDIVISION & Breakers West Plat 18C.R.
 BOOK 70 PAGE 151
 FLOOD ZONE B FLOOD MAP # 150A
 QUAD # 4 ZONING RS
 SE 70-219 ZIP CODE 33411
 PUD NAME SURVEY
 0217-019

BREAKERS WEST PLAT NO. 18
 TRACT D (PLAT BOOK 67, PAGES 187 - 194)

THIS INSTRUMENT PREPARED BY
 LEO E. NOBLE, P.L.S. 3143 STATE OF FLORIDA
 LAWSON, NOBLE AND ASSOCIATES, INC.
 ENGINEERS PLANNERS SURVEYORS
 WEST PALM BEACH, FLORIDA