

# HARBOUR SPRINGS AT MISSION BAY P U D

A REPLAT OF TRACT 'I', TOGETHER WITH A PORTION OF TRACT O - 1, MISSION BAY, A P.U.D. AS RECORDED IN PLAT BOOK 53, PAGES 112 THRU 120, OF THE PUBLIC RECORDS OF PALM BEACH COUNTY, FLORIDA.

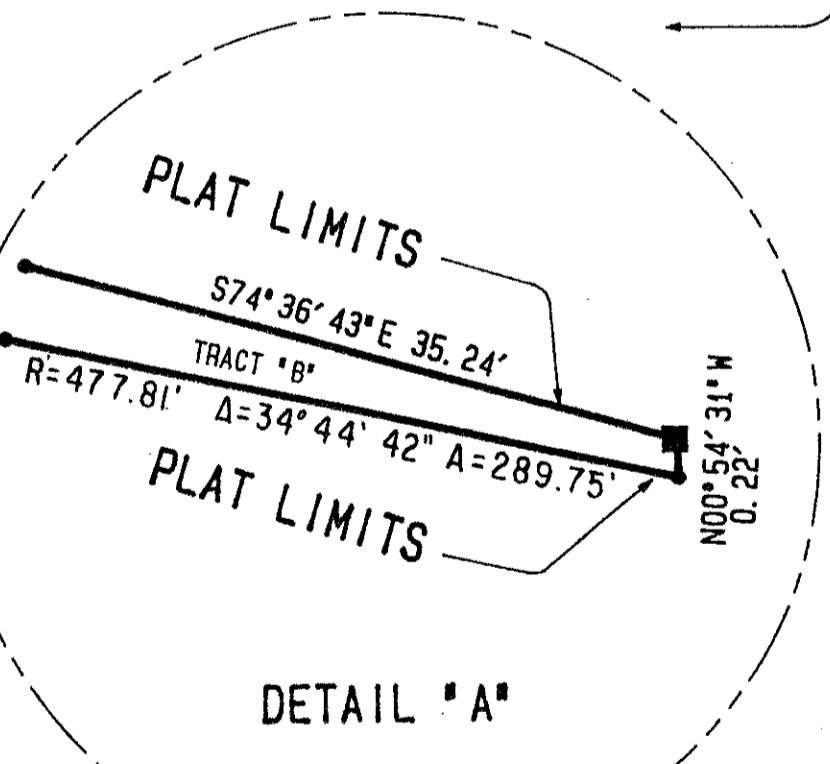
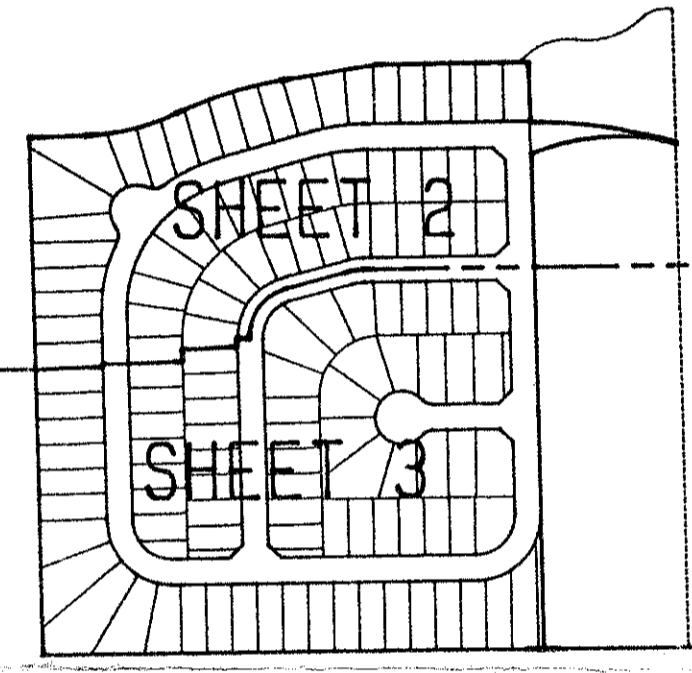
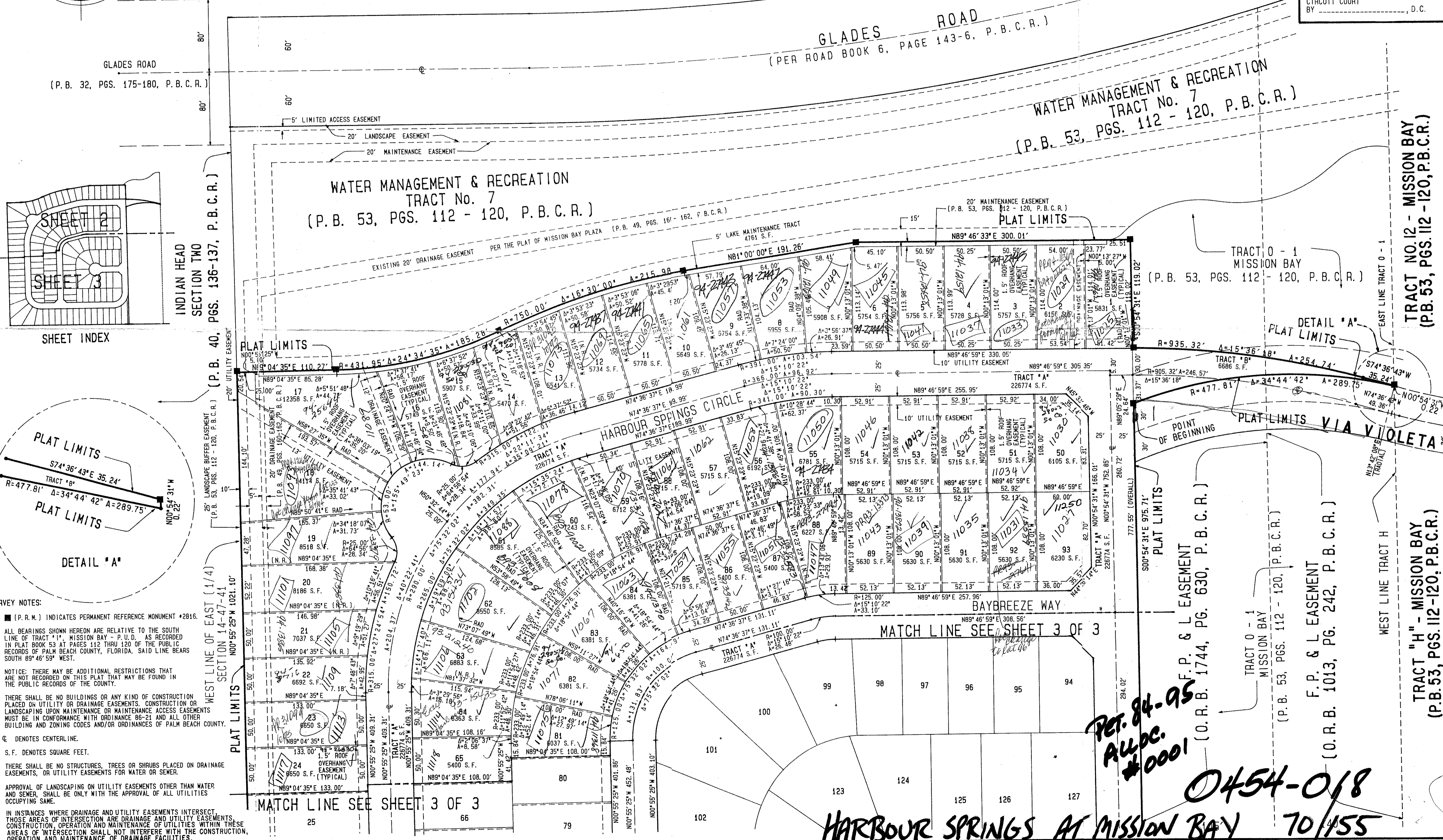
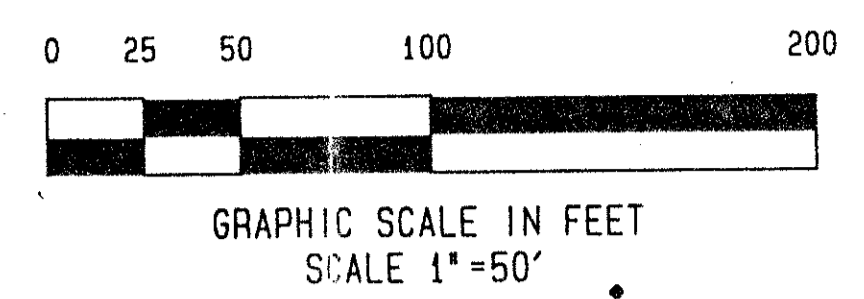
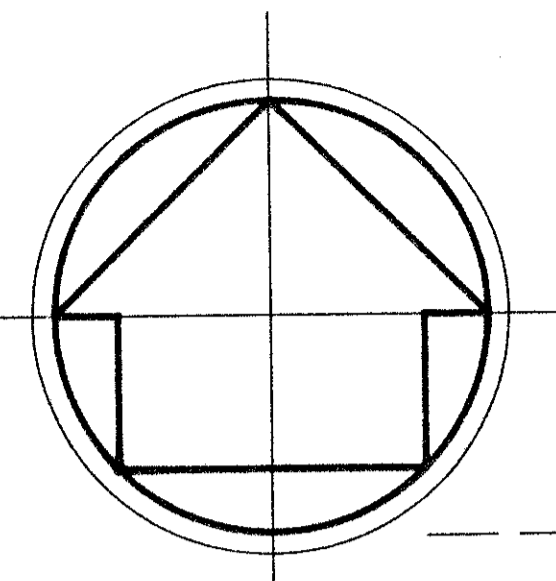
LYING IN SECTION 14, TOWNSHIP 47 SOUTH, RANGE 41 EAST PALM BEACH COUNTY, FLORIDA.

THIS INSTRUMENT WAS PREPARED BY:  
CRAIG A. SMITH & ASSOCIATES  
CONSULTING ENGINEERS-PLANNERS-SURVEYORS  
1000 WEST McNAB ROAD  
POMPANO BEACH, FLORIDA 33069  
BY: FREDERICK E. SMITH, III, P. L. S. No. 2816  
SEPTEMBER, 1992

- LEGEND
- P. B. C. R. INDICATES PALM BEACH COUNTY RECORDS
  - O. R. B. INDICATES OFFICIAL RECORDS BOOK
  - D. C. R. INDICATES DADE COUNTY RECORDS
  - P. L. S. INDICATES PROFESSIONAL LAND SURVEYOR
  - P. B. INDICATES PLAT BOOK
  - PG. INDICATES PAGE
  - PGS. INDICATES PAGES
  - R INDICATES RADIUS
  - Δ INDICATES DELTA OR CENTRAL ANGLE
  - A INDICATES ARC LENGTH
  - INDICATES RADIAL LINE
  - INDICATES NON-RADIAL LINE
  - INDICATES DIRECTION OF RADIAL LINE

STATE OF FLORIDA }  
COUNTY OF PALM BEACH } SS

THIS PLAT WAS FILED FOR RECORD AT \_\_\_\_\_ THIS \_\_\_\_\_ DAY OF \_\_\_\_\_ 1992, A.D. AND DULY RECORDED IN PLAT BOOK No. \_\_\_\_\_ ON PAGES \_\_\_\_\_ AND DOROTHY H. WILKEN, CLERK OF THE CIRCUIT COURT BY \_\_\_\_\_, D.C.



- SURVEY NOTES:
1. (P.R.M.) INDICATES PERMANENT REFERENCE MONUMENT #2816.
  2. ALL BEARINGS SHOWN HEREON ARE RELATIVE TO THE SOUTH LINE OF TRACT 'I', MISSION BAY - P.U.D. AS RECORDED IN PLAT BOOK 53 AT PAGES 112 THRU 120 OF THE PUBLIC RECORDS OF PALM BEACH COUNTY, FLORIDA, SAID LINE BEARS SOUTH 89°46'59" WEST.
  3. NOTICE: THERE MAY BE ADDITIONAL RESTRICTIONS THAT ARE NOT RECORDED ON THIS PLAT THAT MAY BE FOUND IN THE PUBLIC RECORDS OF THE COUNTY.
  4. THERE SHALL BE NO BUILDINGS OR ANY KIND OF CONSTRUCTION PLACED ON UTILITY OR DRAINAGE EASEMENTS. CONSTRUCTION OR LANDSCAPING UPON MAINTENANCE OR MAINTENANCE ACCESS EASEMENTS MUST BE IN CONFORMANCE WITH ORDINANCE 86-21 AND ALL OTHER BUILDING AND ZONING CODES AND/OR ORDINANCES OF PALM BEACH COUNTY.
  5. @ DENOTES CENTERLINE.
  6. S.F. DENOTES SQUARE FEET.
  7. THERE SHALL BE NO STRUCTURES, TREES OR SHRUBS PLACED ON DRAINAGE EASEMENTS, OR UTILITY EASEMENTS FOR WATER OR SEWER.
  8. APPROVAL OF LANDSCAPING ON UTILITY EASEMENTS OTHER THAN WATER AND SEWER, SHALL BE ONLY WITH THE APPROVAL OF ALL UTILITIES OCCUPYING SAME.
  9. IN INSTANCES WHERE DRAINAGE AND UTILITY EASEMENTS INTERSECT THOSE AREAS OF INTERSECTION ARE DRAINAGE AND UTILITY EASEMENTS. CONSTRUCTION, OPERATION AND MAINTENANCE OF UTILITIES WITHIN THESE AREAS OF INTERSECTION SHALL NOT INTERFERE WITH THE CONSTRUCTION, OPERATION AND MAINTENANCE OF DRAINAGE FACILITIES.

*RET. 84-95  
ALLDC.  
#0001*

**HARBOUR SPRINGS AT MISSION BAY** 0454-018 70/155

TRACT NO. 12 - MISSION BAY  
(P.B. 53, PGS. 112 - 120, P.B.C.R.)

TRACT "H" - MISSION BAY  
(P.B. 53, PGS. 112 - 120, P.B.C.R.)

F.P. & L EASEMENT  
(O.R.B. 1013, PG. 242, P.B.C.R.)

F.P. & L EASEMENT  
(O.R.B. 1744, PG. 630, P.B.C.R.)

PLAT LIMITS VIA VIOLETA

DETAIL 'A'

WATER MANAGEMENT & RECREATION  
TRACT No. 7  
(P.B. 53, PGS. 112 - 120, P.B.C.R.)

GLADES ROAD  
(PER ROAD BOOK 6, PAGE 143-6, P.B.C.R.)

WATER MANAGEMENT & RECREATION  
TRACT No. 7  
(P.B. 53, PGS. 112 - 120, P.B.C.R.)

INDIAN HEAD  
SECTION TWO  
(P.B. 40, PGS. 136-137, P.B.C.R.)

GLADES ROAD  
(P.B. 32, PGS. 175-180, P.B.C.R.)

TRACT O - 1  
MISSION BAY  
(P.B. 53, PGS. 112 - 120, P.B.C.R.)

TRACT 'B'

TRACT 'A'

TRACT 'C'

TRACT 'D'

TRACT 'E'

TRACT 'F'

TRACT 'G'

TRACT 'H'

TRACT 'I'

TRACT 'J'

TRACT 'K'

TRACT 'L'

TRACT 'M'

TRACT 'N'

TRACT 'O'

TRACT 'P'

TRACT 'Q'

TRACT 'R'

TRACT 'S'

TRACT 'T'

TRACT 'U'

TRACT 'V'

TRACT 'W'

TRACT 'X'

TRACT 'Y'

TRACT 'Z'