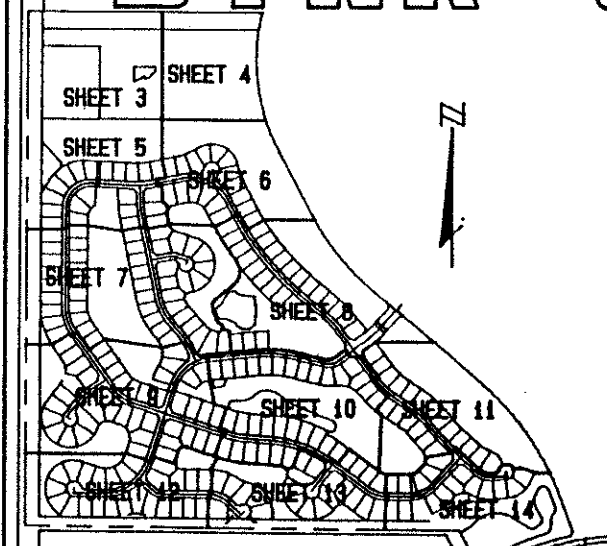


# BINK'S FOREST OF THE LANDINGS AT WELLINGTON P. U. D. PLAT 2

IN PARTS OF SECTIONS 6 AND 7, TOWNSHIP 44 SOUTH, RANGE 41 EAST  
 PALM BEACH COUNTY, FLORIDA  
 IN FOURTEEN SHEETS SHEET No. 7

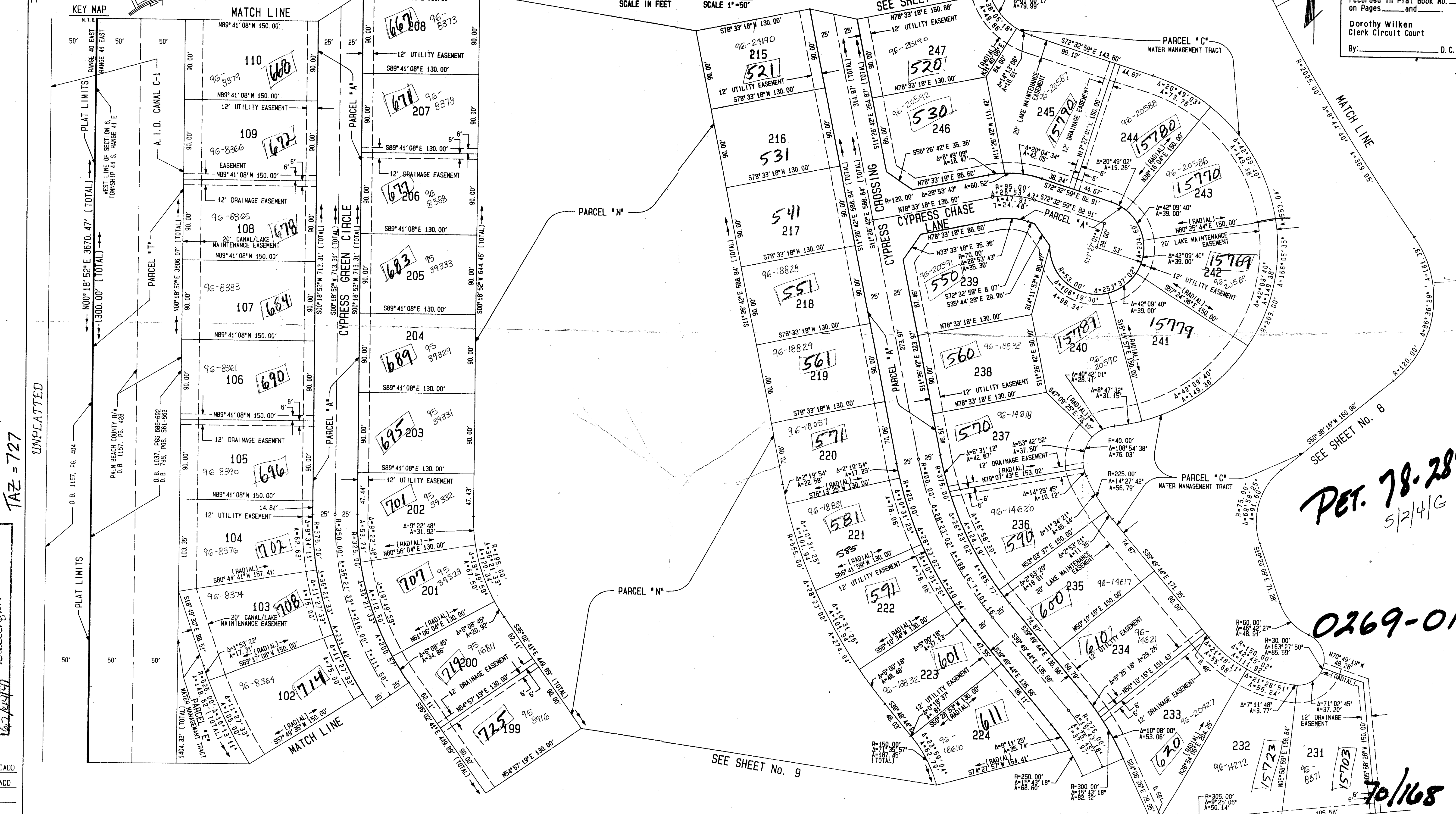
0269-010

168



GEE AND JENSON  
 ENGINEERS - ARCHITECTS - PLANNERS, INC.  
 APRIL 1989  
 SCALE IN FEET SCALE 1"=50'

STATE OF FLORIDA  
 COUNTY OF PALM BEACH  
 This plat was filed for  
 record at \_\_\_\_\_ M. this \_\_\_\_\_ day  
 of \_\_\_\_\_ 1993, and duly  
 recorded in Plat Book No. \_\_\_\_\_  
 on Pages \_\_\_\_\_ and \_\_\_\_\_  
 Dorothy Wilken  
 Clerk Circuit Court  
 By: \_\_\_\_\_ D. C.



TAZ = 727

PET. 78-287E  
 5/2/4/G

0269-010

70/168

SUBDIVISION Landings At Wellington  
 BOOK 70  
 FLOOD ZONE B  
 QUAD 77  
 SE  
 ZIP CODE 33414  
 PUD NAME Wellington  
 6/14/91

COMPUTED D. W. LEI/CADD  
 DRAWN M. R. J./CADD  
 CHECKED J. H. D.  
 APPROVED \_\_\_\_\_