

BINK'S FOREST OF THE LANDINGS AT WELLINGTON P. U. D. PLAT 2

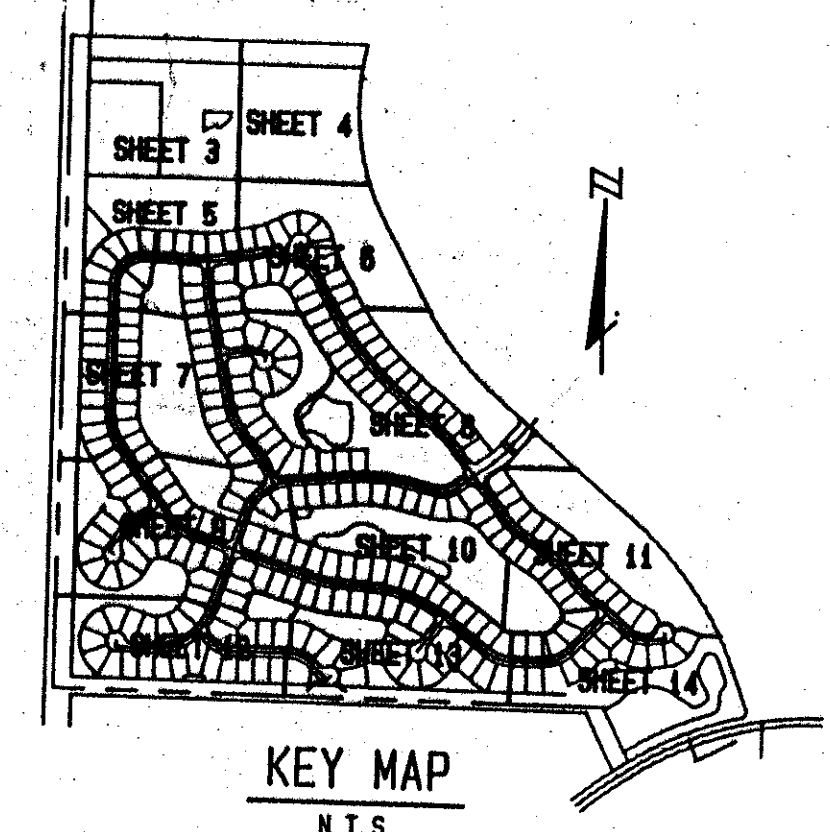
IN PARTS OF SECTIONS 6 AND 7, TOWNSHIP 44 SOUTH, RANGE 41 EAST

PALM BEACH COUNTY, FLORIDA

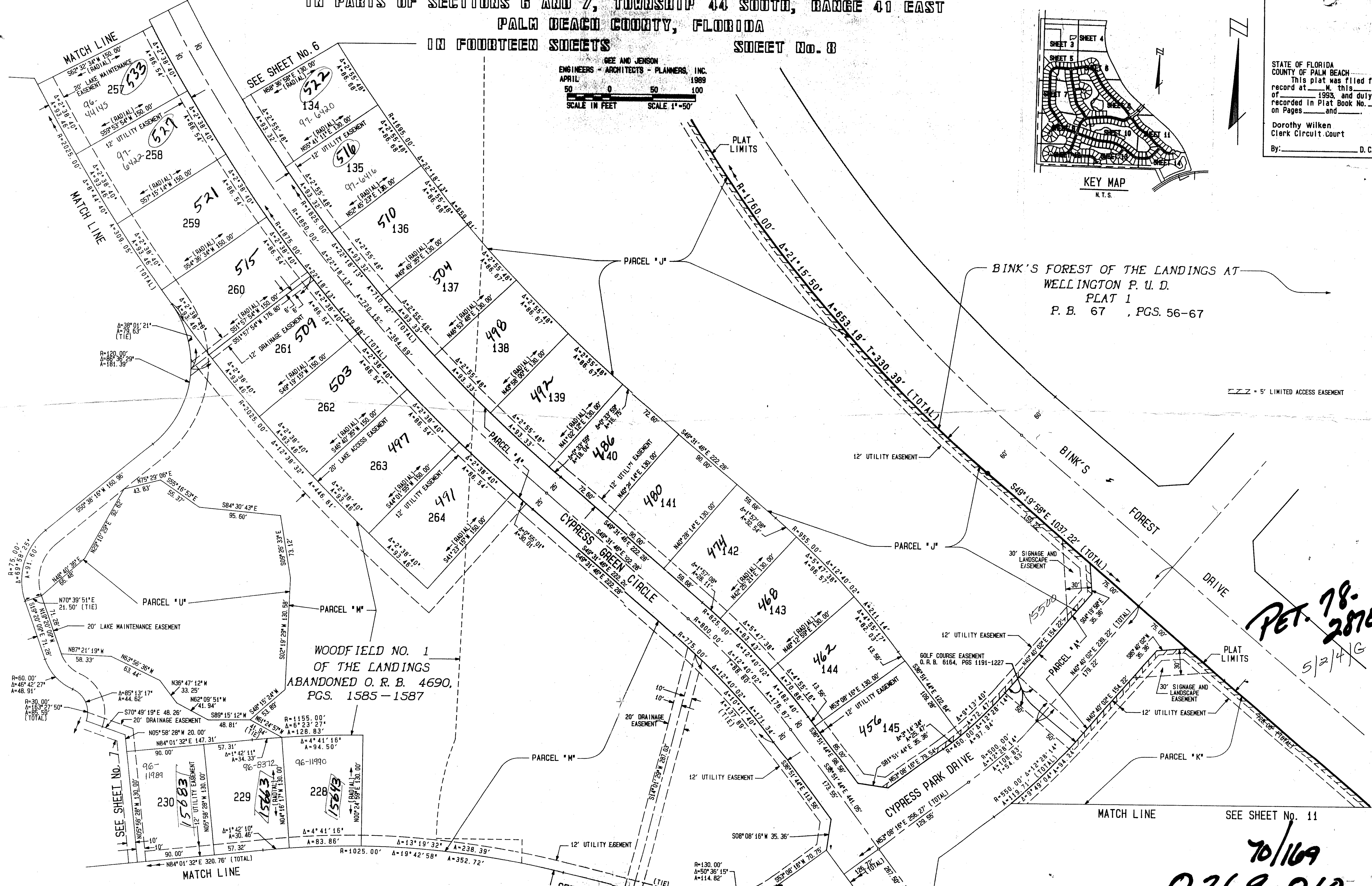
IN FOURTEEN SHEETS

SHEET No. 8

REE AND JENSON
ENGINEERS - ARCHITECTS - PLANNERS, INC.
APRIL 1989
SCALE IN FEET SCALE 1"=50'



STATE OF FLORIDA
COUNTY OF PALM BEACH
This plat was filed for
record at M. this day
of 1993, and duly
recorded in Plat Book No.
on Pages and
Dorothy Wilken
Clerk Circuit Court
By: D.C.



BINK'S FOREST OF THE LANDINGS AT
WELLINGTON P. U. D.
PLAT 1
P. B. 67 , PGS. 56-67

--- 5' LIMITED ACCESS EASEMENT

WOODFIELD NO. 1
OF THE LANDINGS
ABANDONED O. R. B. 4690,
PGS. 1585-1587

PET. 78-
287E
5/2/16

70/109

0269-010

PLAT 2

TAZ = 727

SUBDIVISION *Landings Plat 2*
BOOK 70
PAGE 169
FLOOD MAP #100AB
ZONING RE
QUAD #77
SE
PUD NAME Wellington
ZIP CODE 33414

COMPUTED D. W. LEI/CADD
DRAWN M. R. J./CADD
CHECKED J. H. D.
APPROVED

WATER MANAGEMENT TRACTS ARE THE PERPETUAL MAINTENANCE OBLIGATION OF FOURTH WELLINGTON, INC.

BINK'S FOREST OF THE LANDINGS AT WELLINGTON PLAT 2