

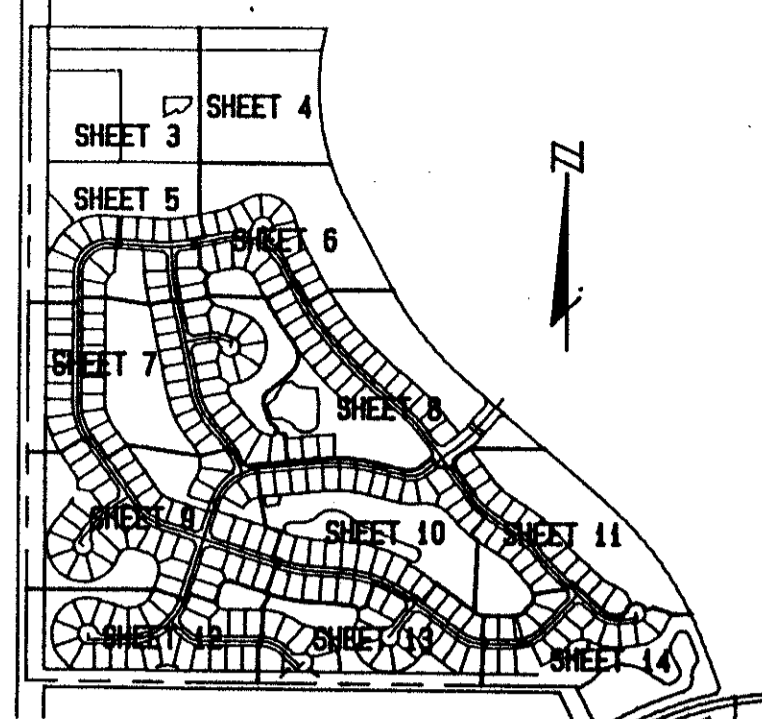
BINK'S FOREST OF THE LANDINGS AT WELLINGTON P. U. D. PLAT 2

IN PARTS OF SECTIONS 6 AND 7, TOWNSHIP 44 SOUTH, RANGE 41 EAST

PALM BEACH COUNTY, FLORIDA

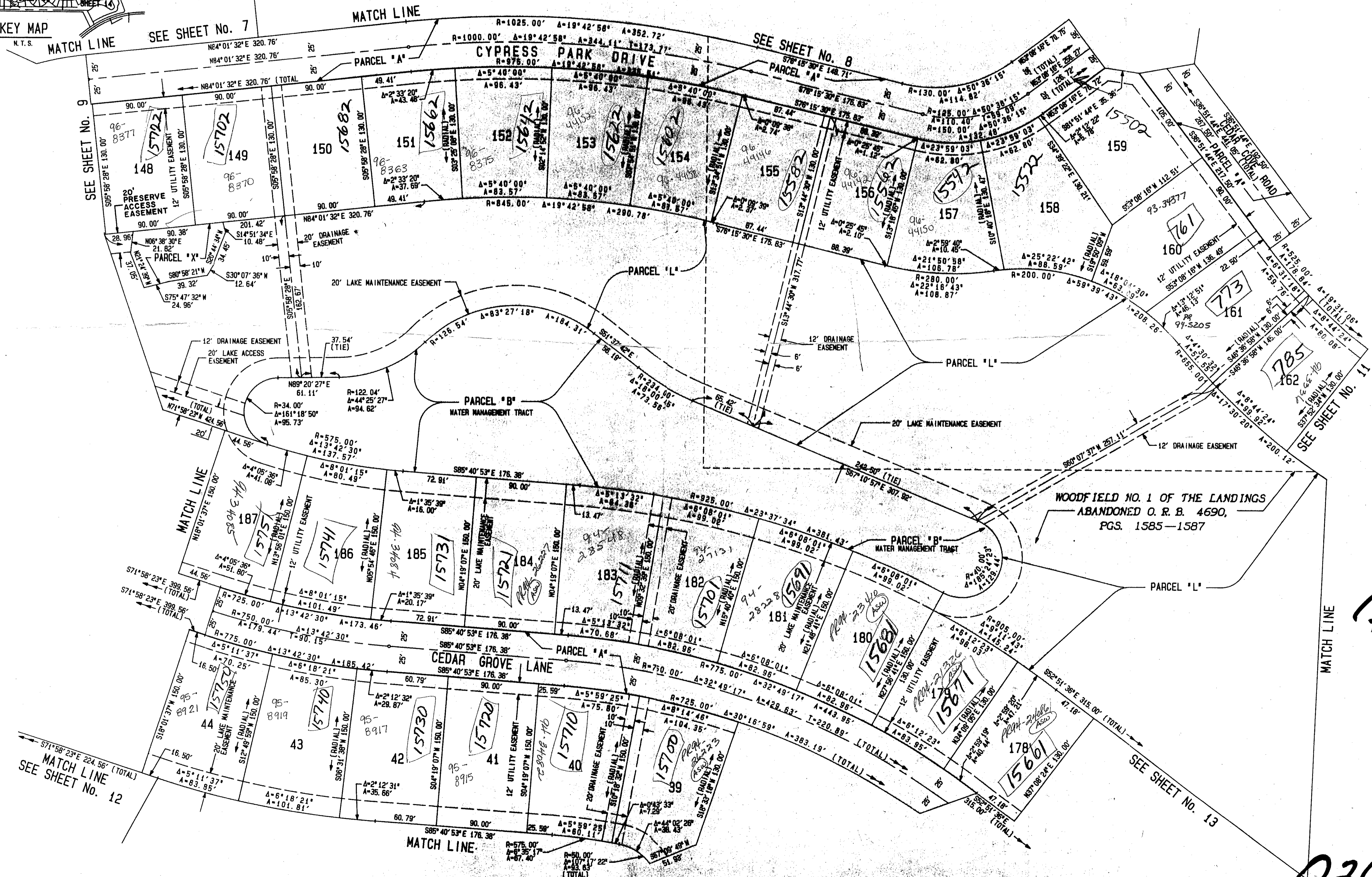
IN FOURTEEN SHEETS

SHEET No. 10



GEE AND JENSON
ENGINEERS - ARCHITECTS - PLANNERS, INC.
APRIL 1989
SCALE IN FEET SCALE 1"=50'

STATE OF FLORIDA
COUNTY OF PALM BEACH
This plat was filed for
record at M. this day
of 1995, and duly
recorded in Plat Book No.
on Pages and
Dorothy Wilken
Clerk Circuit Court
By: D. C.



SUBDIVISION Standard Plz
BOOK 70 PAGE 171
FLOOD MAP # 1006
ZONING RE
QUAD # 77
ZIP CODE 33414
SE
SUB NAME Wellington, PUD
7/7/91
COMPUTED D. W. LEI/CADD
DRAWN M. R. J./CADD
CHECKED J. H. D.
APPROVED

TAZ = 727

PET. 78 287E
5/2/4/G

70/171

0269-010

WATER MANAGEMENT TRACTS ARE THE PERPETUAL MAINTENANCE OBLIGATION OF FOURTH WELLINGTON, INC.

BINK'S FOREST OF THE LANDINGS AT WELLINGTON PLAT 2