

# BINK'S FOREST OF THE LANDINGS AT WELLINGTON P. U. D. PLAT 2

IN PARTS OF SECTIONS 6 AND 7, TOWNSHIP 44 SOUTH, RANGE 41 EAST

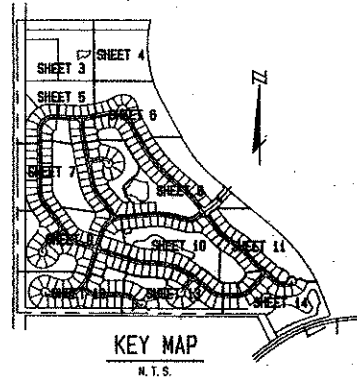
PALM BEACH COUNTY, FLORIDA

IN FOURTEEN SHEETS

SHEET No. 14

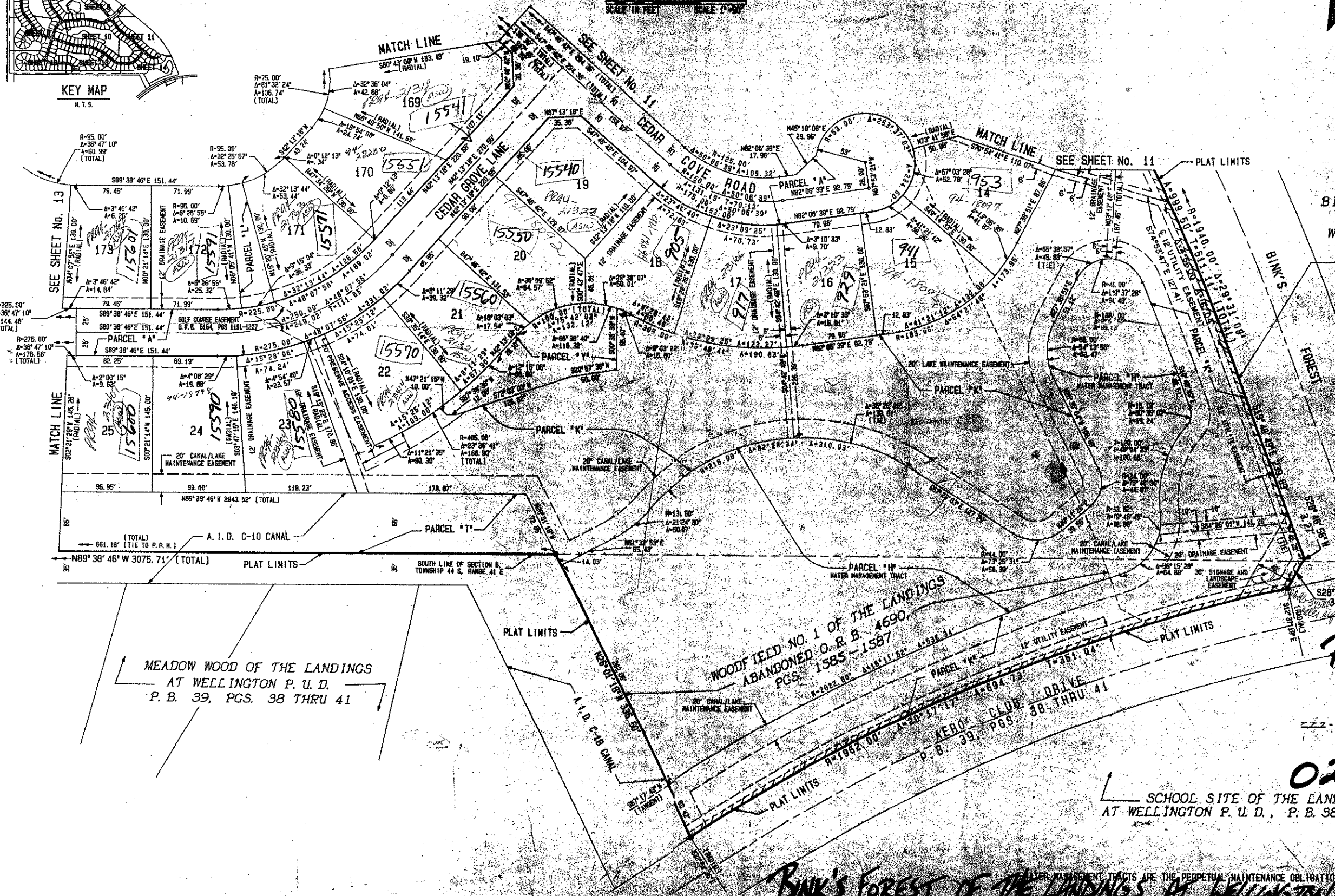
0269-010

175



SEE AND JENSEN  
ENGINEERS - ARCHITECTS - PLANNERS, INC.  
APRIL 1988  
SCALE IN FEET SCALE 1"=50'

STATE OF FLORIDA  
COUNTY OF PALM BEACH  
This plat was filed for  
record at \_\_\_\_\_ day  
of \_\_\_\_\_ 1988, and duly  
recorded in Plat Book No. \_\_\_\_\_  
on Pages \_\_\_\_\_  
Dorothy Wilken  
Clerk, Circuit Court  
By \_\_\_\_\_



TAZ = 727

FLOOD MAP #1006  
ZONING RE  
QUAD #77  
ZIP CODE 5344  
PUB. NAME Wellington

DESIGNED BY D. M. LEI/CADD  
DRAWN BY D. M. LEI/CADD  
CHECKED BY J. H. D.

PET. 98-2878  
5/2/14/G

0269-010

70/175

BINK'S FOREST OF THE LANDINGS AT WELLINGTON PLAT 2