

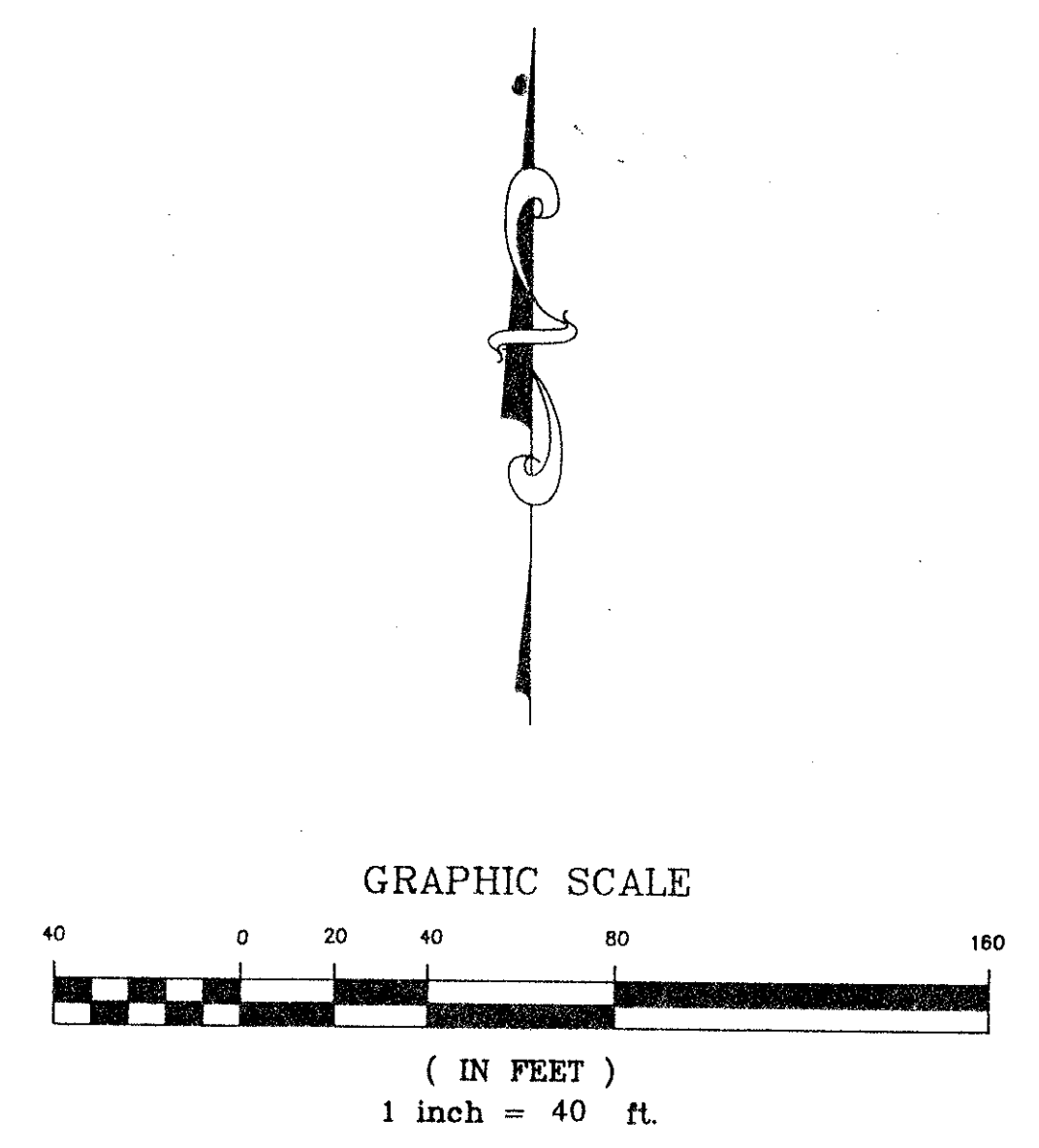
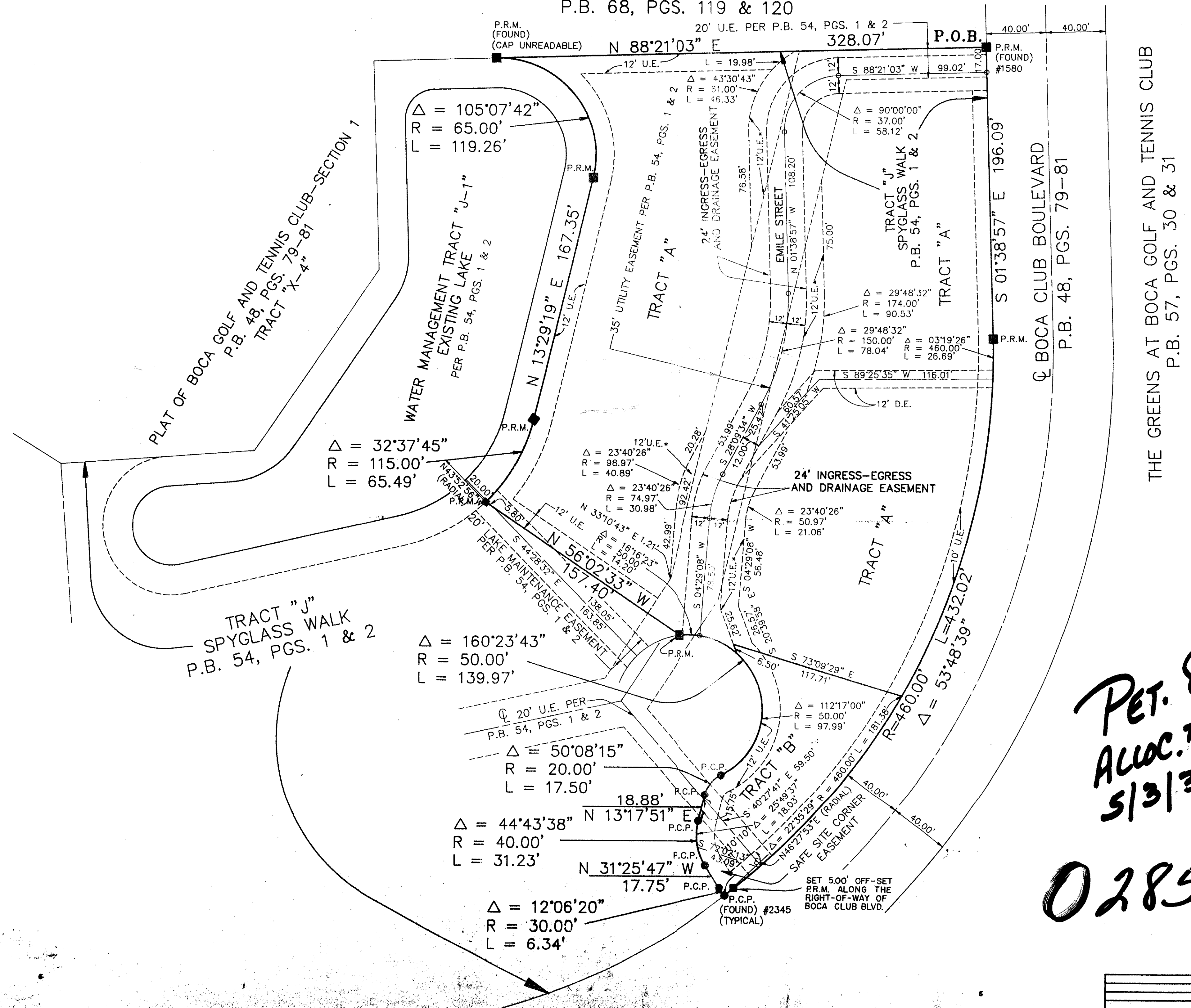
# THE PLAT OF EASTBROOKE BOCA GOLF AND TENNIS CLUB, A P.U.D. BEING A REPLAT OF A PORTION A TRACT "J" OF THE PLAT OF SPYGLASS WALK

AS RECORDED IN PLAT BOOK 54, PAGES 1 AND 2  
LYING IN THE WEST ONE HALF OF SECTION 31, TOWNSHIP 46 EAST, RANGE 43 EAST,  
PALM BEACH COUNTY, STATE OF FLORIDA

186

STATE OF FLORIDA SS  
COUNTY OF PALM BEACH  
This plat was filed for record at \_\_\_\_\_ this \_\_\_\_\_ day at \_\_\_\_\_, 19\_\_\_\_ and duly recorded in Plat Book No \_\_\_\_\_ on page \_\_\_\_\_  
DOROTHY H. WILKEN, Clerk Circuit Court  
By: \_\_\_\_\_

PLAT OF BALBOA POINT BOCA GOLF AND TENNIS CLUB, A P.U.D.  
P.B. 68, PGS. 119 & 120



NOTES:  
 1.) A 10' UTILITY, 12' DRAINAGE AND 25' ACCESS EASEMENTS AS SHOWN ON THE PLAT OF SPYGLASS WALK, PLAT BOOK 54, PAGES 1 AND 2, HAVE BEEN ABANDONED AS RECORDED IN OFFICIAL RECORD BOOK 7329, PAGE 458 OF THE PUBLIC RECORDS OF PALM BEACH COUNTY, FLORIDA.  
 2.) \* ADDITIONAL EASEMENT AS REQUIRED TO PROVIDE A UTILITY EASEMENT 12' IN WIDTH ADJACENT TO AND PARALLEL WITH THE 24' INGRESS-EGRESS EASEMENT (EMILE STREET).

LEGEND:  
 P.R.M. = PERMANENT REFERENCE MONUMENT  
 P.C.P. = PERMANENT CONTROL POINT  
 P.B. = PLAT BOOK  
 PGS. = PAGES  
 I. ROD = IRON ROD  
 U.E. = UTILITY EASEMENT  
 D.E. = DRAINAGE EASEMENT  
 L.A.E. = LIMITED ACCESS EASEMENT

PET. 81-1  
 ALLOC. #0001  
 5/3/31J

0285-017

70/186  
 SHEET 3 OF 3

BOOK 186  
 PAGE 186  
 FLOOD ZONE 7-12  
 QUAD # 22  
 ZONING RS  
 PUD NAME same.  
 ZIP CODE 33481 (33481)

F.R.S. & ASSOCIATES  
 LAND SURVEYORS AND LAND PLANNERS  
 901 NORTHPOINT PARKWAY, SUITE 301  
 WEST PALM BEACH, FLORIDA 33407 (407) 478-7178

SCALE: 1"=40'	APPROVED BY:	PLOTTED BY:
DATE: 07/08/92		DAVID L. SMITH
REVISIONS	BY:	DATE:
THE PLAT OF EASTBROOKE BOCA GOLF AND TENNIS CLUB, A P.U.D. BEING A REPLAT OF A PORTION OF TRACT "J" OF THE PLAT OF SPYGLASS WALK		JOB NUMBER: 31-S-12