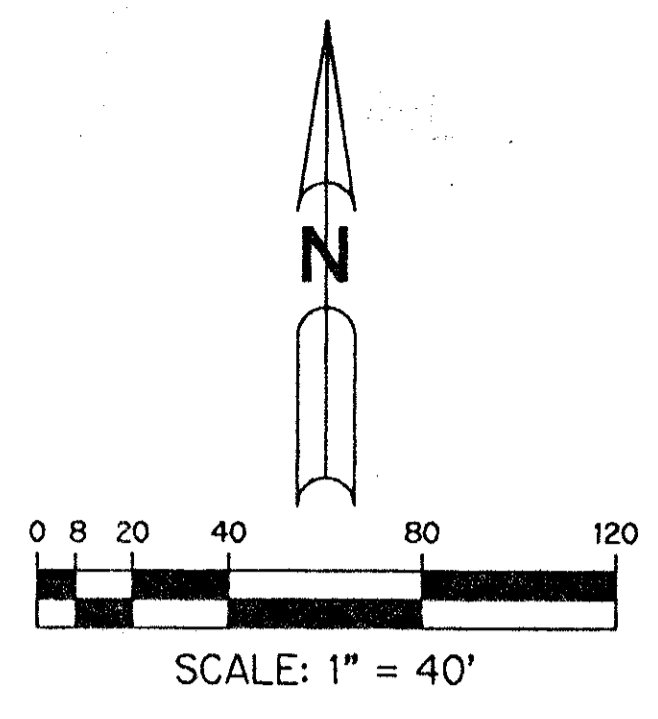
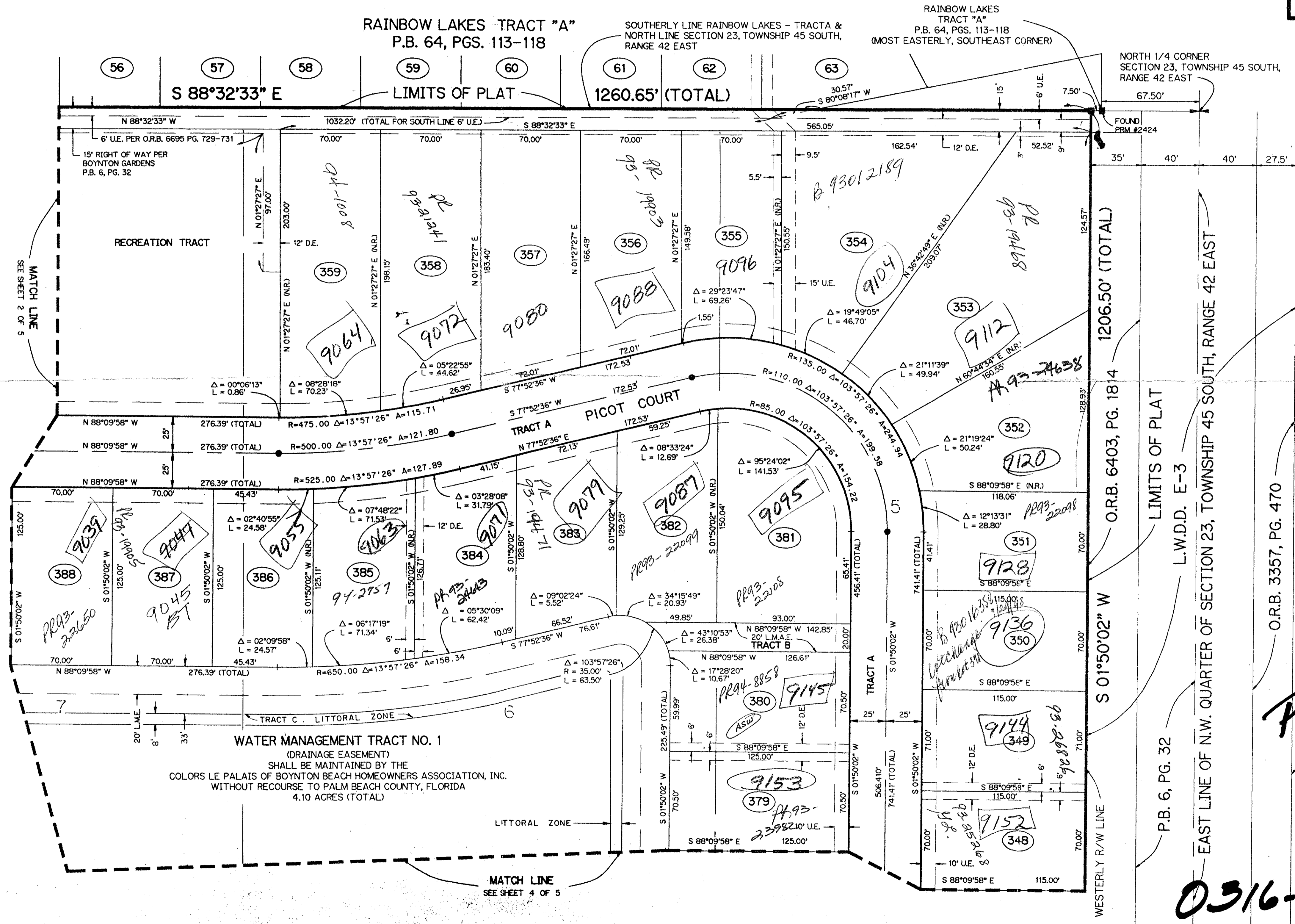


KEY MAP
N.T.S.



RAINBOW LAKES TRACT A - ONE

BEING A REPLAT OF LOTS 43, 44 AND 45, RAINBOW LAKES - TRACT "A", AS RECORDED IN PLAT BOOK 64, PAGES 113 THROUGH 118 INCLUSIVE AND TRACTS 5 THROUGH 8 INCLUSIVE AND TRACTS 17 THROUGH 20 INCLUSIVE OF BOYNTON GARDENS, AS RECORDED IN PLAT BOOK 6, PAGE 32 AND THOSE RIGHTS OF WAYS ABANDONED PER O.R.B. 991, PAGE 305 AND O.R.B. PAGE LYING IN SECTION 23, TOWNSHIP 45 SOUTH, RANGE 42 EAST
PALM BEACH COUNTY, FLORIDA
OCTOBER, 1992 SHEET 3 OF 5



TAX = 441

BOOK 70
FLOOD ZONE B
QUAD # 35
SE
PUD NAME
PAGE 192
FLOOD MAP # 1908
ZONING RTS
ZIP CODE 33437

THIS INSTRUMENT PREPARED BY
LEO E. NOBLE P.L.S. 3143 STATE OF FLORIDA
LAWSON, NOBLE AND ASSOCIATES, INC.
ENGINEERS PLANNERS SURVEYORS
WEST PALM BEACH, FLORIDA

PET. 79-177D
ALLOC. #0001
5/2/2/I
(TRACT F)

0316-012

RAINBOW LAKES TRACT A-ONE 70/192

TARTAN LAKES PLAT NO. 1 (P.U.D.)
PLAT BOOK 40, PAGES 165-169

O.R.B. 3357, PG. 470

L.W.D.D. E-3

P.B. 6, PG. 32

O.R.B. 6403, PG. 1814

NORTH 1/4 CORNER SECTION 23, TOWNSHIP 45 SOUTH, RANGE 42 EAST

RAINBOW LAKES TRACT "A" P.B. 64, PGS. 113-118 (MOST EASTERLY, SOUTHEAST CORNER)

SOUTHERLY LINE RAINBOW LAKES - TRACTA & NORTH LINE SECTION 23, TOWNSHIP 45 SOUTH, RANGE 42 EAST

RAINBOW LAKES TRACT "A" P.B. 64, PGS. 113-118