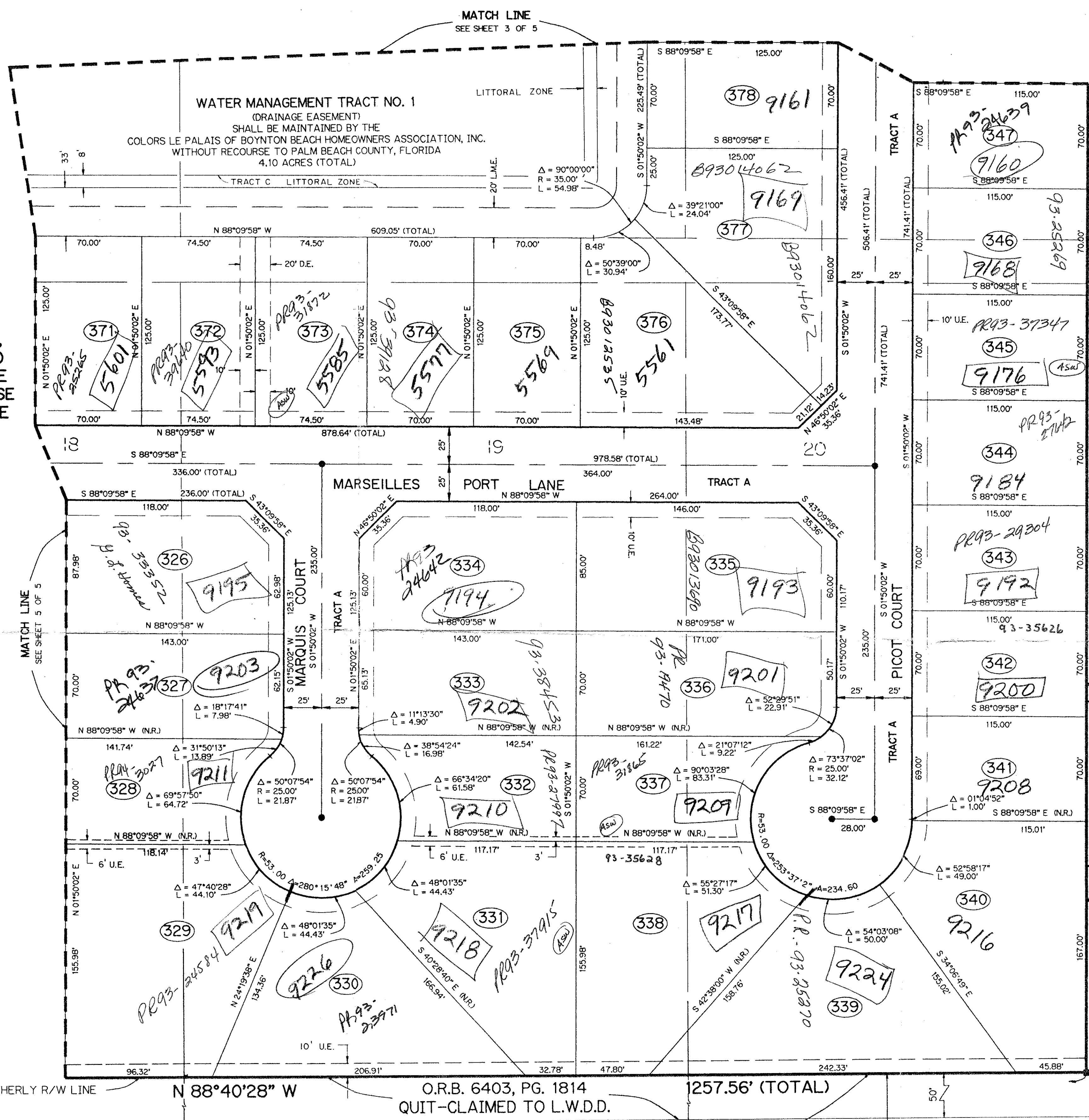


RAINBOW LAKES TRACT A - ONE

BEING A REPLAT OF LOTS 43, 44 AND 45, RAINBOW LAKES - TRACT "A", AS RECORDED IN PLAT BOOK 64, PAGES 113 THROUGH 118 INCLUSIVE AND TRACTS 5 THROUGH 8 INCLUSIVE AND TRACTS 17 THROUGH 20 INCLUSIVE OF BOYNTON GARDENS, AS RECORDED IN PLAT BOOK 6, PAGE 32 AND THOSE RIGHTS OF WAYS ABANDONED PER O.R.B. 991, PAGE 305 AND O.R.B. PAGE LYING IN SECTION 23, TOWNSHIP 45 SOUTH, RANGE 42 EAST PALM BEACH COUNTY, FLORIDA
OCTOBER, 1992 SHEET 4 OF 5



TAZ = 441

BOOK 193
PAGE 193
FLOOD MAP # 1908
ZONING RT5
QUAD # 35
PUB. NAME
2/1/1992

THIS INSTRUMENT PREPARED BY
LEO E. NOBLE P.L.S. 3143 STATE OF FLORIDA
LAWSON, NOBLE AND ASSOCIATES, INC.
ENGINEERS PLANNERS SURVEYORS
WEST PALM BEACH, FLORIDA

BOYNTON CANAL

SUN VALLEY II PLAT BOOK 56, PAGES 128-135

WESTERLY R/W LINE
S 01°50'02" W
O.R.B. 6403, PG. 1814
LIMITS OF PLAT
L.W.D. E-3
EAST LINE OF N.W. QUARTER OF SECTION 23, TOWNSHIP 45 SOUTH, RANGE 42 EAST
O.R.B. 3357, PG. 470
TARTAN LAKES PLAT NO. 1 (P.U.D.) PLAT BOOK 40, PAGES 165-169

PET. 79-177D
ALLOC. #0001
5/2/21
(TRACT F)

RAINBOW LAKES TRACT A-ONE 70/193

0316-012