

KEY MAP
N.T.S.

RAINBOW LAKES TRACT "A"
P.B. 64, PGS. 113-118

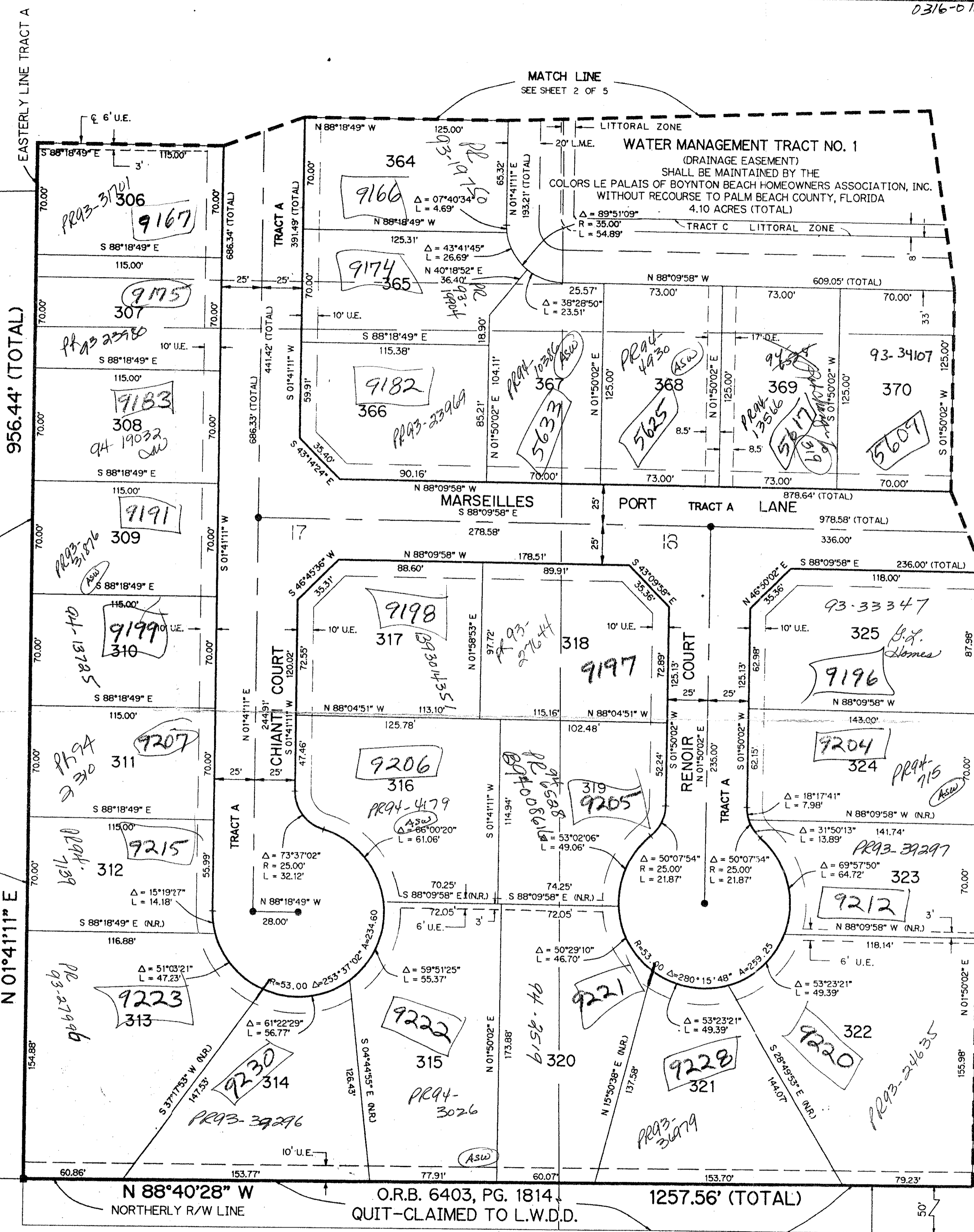
RAINBOW LAKES TRACT A - ONE

BEING A REPLAT OF LOTS 43, 44 AND 45, RAINBOW LAKES - TRACT "A", AS RECORDED IN PLAT BOOK 64, PAGES 113 THROUGH 118 INCLUSIVE AND TRACTS 5 THROUGH 8 INCLUSIVE AND TRACTS 17 THROUGH 20 INCLUSIVE OF BOYNTON GARDENS, AS RECORDED IN PLAT BOOK 6, PAGE 32 AND THOSE RIGHTS OF WAYS ABANDONED PER O.R.B. 991, PAGE 305 AND O.R.B. PAGE LYING IN SECTION 23, TOWNSHIP 45 SOUTH, RANGE 42 EAST PALM BEACH COUNTY, FLORIDA
OCTOBER, 1992 SHEET 5 OF 5

TARTAN LAKES PLAT NO. 3 - P.U.D.
TRACT L-3
(EXISTING LAKE)
P.B. 51, PG. 170

25' BUFFER & DRAINAGE MAINTENANCE EASEMENT
P.B. 51, PG. 120

EASTERLY LINE TARTAN LAKES TRACT L-3



N 01°41'11" E 956.44' (TOTAL)
N 88°40'28" W 1257.56' (TOTAL)
NORTHERLY R/W LINE
O.R.B. 6403, PG. 1814
QUIT-CLAIMED TO L.W.D.D.

BOYNTON CANAL

SUN VALLEY II
PLAT BOOK 56, PAGE 128-135

PET. 79-177D
AVOC. #0001
5/2/21
(TRACT F)

0316-012

RAINBOW LAKES TRACT A-ONE 70/194

TAX = 441

BOOK 70 PAGE 194
FLOOD MAP # 190B
ZONING RTS
QUAD # 35
ZIP CODE 33437
PUD NAME same
22/11/15

THIS INSTRUMENT PREPARED BY
LEO E. NOBLE P.L.S. #3143 STATE OF FLORIDA
LAWSON, NOBLE & ASSOCIATES, INC.
ENGINEERS PLANNERS SURVEYORS
WEST PALM BEACH, FLORIDA