

MISSION BAY - TENNIS ACADEMY

454-022
SHEET 2 OF 2

9

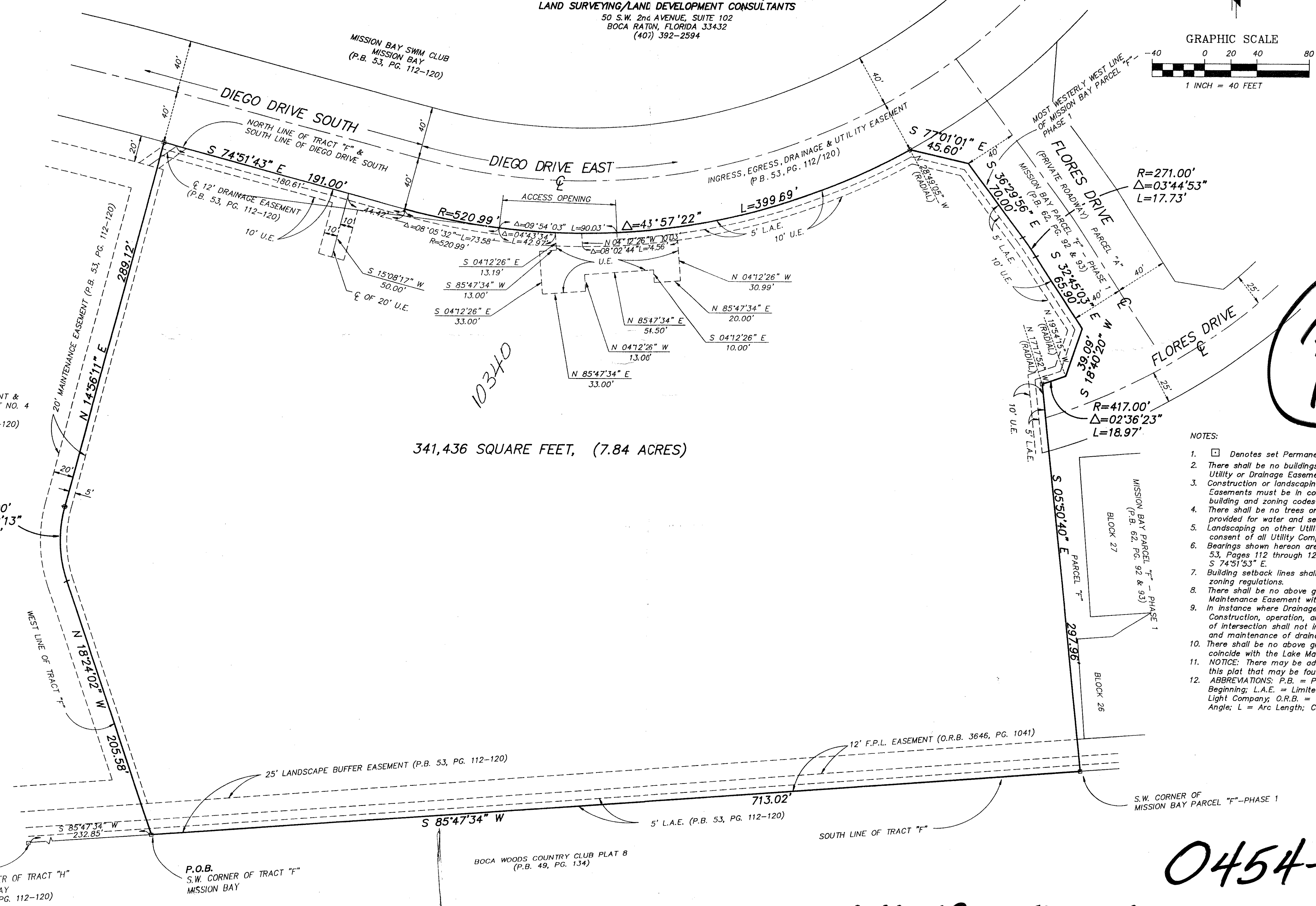
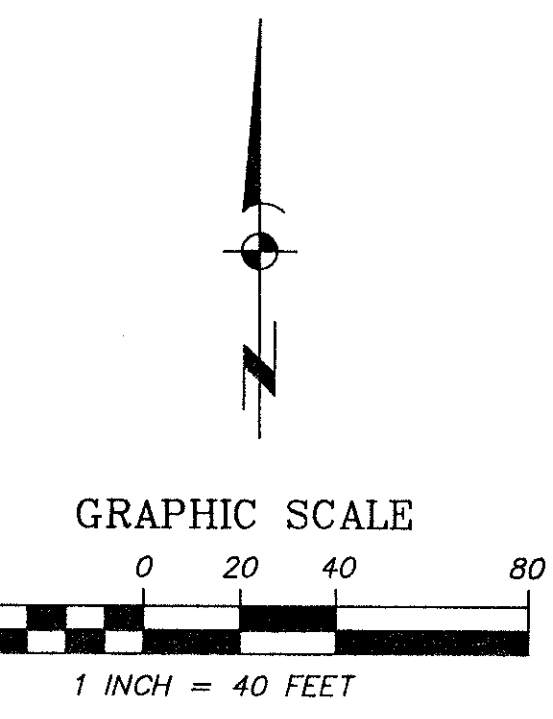
'A PART OF P.U.D.'

A REPLAT OF A PORTION OF TRACT "F", MISSION BAY, (P.B. 53, PG. 112-120) IN SECTION 13, TOWNSHIP 47 SOUTH, RANGE 41 EAST, PALM BEACH COUNTY, FLORIDA.

PREPARED BY:
WILLIAM A. HALL, P.L.S.
AVIROM-HALL AND ASSOCIATES, INC.
LAND SURVEYING/LAND DEVELOPMENT CONSULTANTS
50 S.W. 2nd AVENUE, SUITE 102
BOCA RATON, FLORIDA 33432
(407) 392-2594

STATE OF FLORIDA
COUNTY OF PALM BEACH
This plat was filed for record at _____ this _____ day of _____, 1993, and duly recorded in Plat Book _____, Pages _____ through _____.

DOROTHY H. WILKEN
Clerk of Circuit Court
By: _____



**PET. 84-95
ALLOC. #0001**

- NOTES:
1. Denotes set Permanent Reference Monument.
 2. There shall be no buildings or any kind of construction placed on Utility or Drainage Easements.
 3. Construction or landscaping upon Maintenance or Lake Maintenance Easements must be in conformance with Ordinance 86-21 and all other building and zoning codes and/or ordinances of Palm Beach County.
 4. There shall be no trees or shrubs placed on Utility Easements which are provided for water and sewer use or upon Drainage Easements.
 5. Landscaping on other Utility Easements shall be allowed only after consent of all Utility Companies occupying the same.
 6. Bearings shown hereon are relative to the plat of Mission Bay, Plat Book 53, Pages 112 through 120, with the North boundary having a bearing of S 74°51'53\"/>

TAZ = 782
 FLOOD MAP # 100B
 ZONING RTS
 QUAD # 68
 SE 84-95
 PUD NAME same
 12/17/91

0454-022

MISSION BAY - TENNIS ACADEMY 71/9