

WINSTON TRAILS PLAT ONE

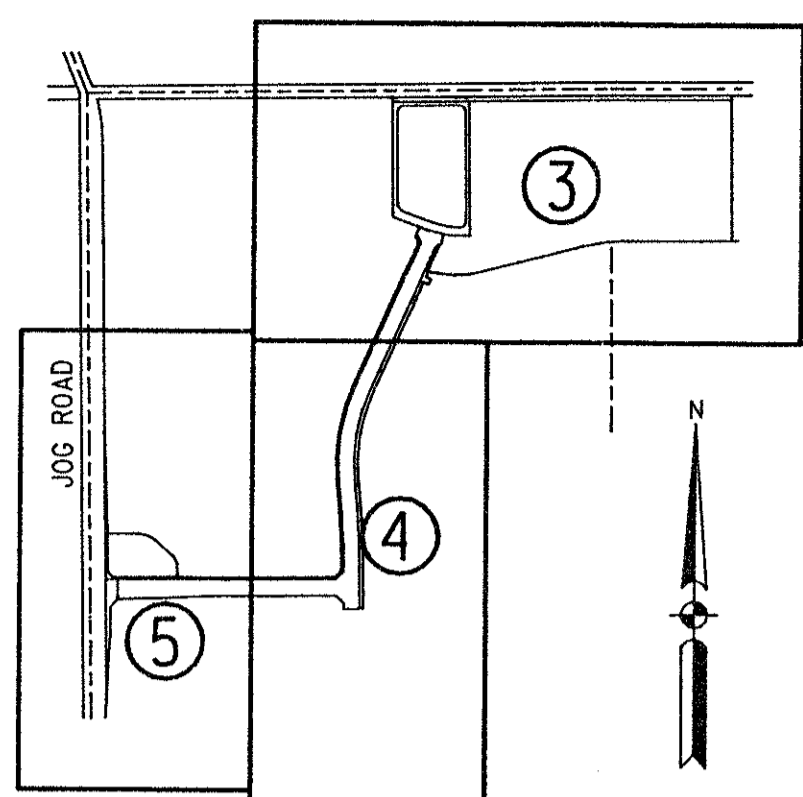
PART OF A P.U.D.
 LYING IN SECTIONS 2 AND 3, TOWNSHIP 45 SOUTH, RANGE 42 EAST,
 PALM BEACH COUNTY, FLORIDA.

PREPARED BY:
 JON P. WEBER IN THE OFFICES OF
 KEITH AND SCHNARS, P.A.
 ENGINEERS - PLANNERS - SURVEYORS
 6500 NORTH ANDREWS AVENUE
 FORT LAUDERDALE, FLORIDA 33309
 (305) 776-1616

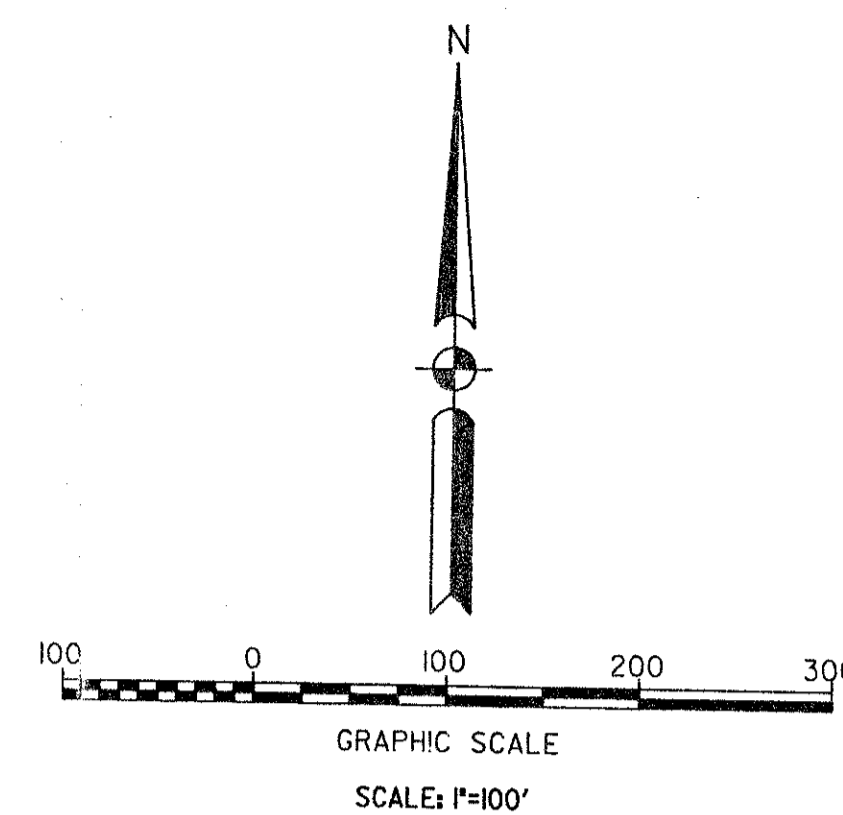
SHEET 3 OF 5

APRIL 1990
 REVISED: OCTOBER 1992

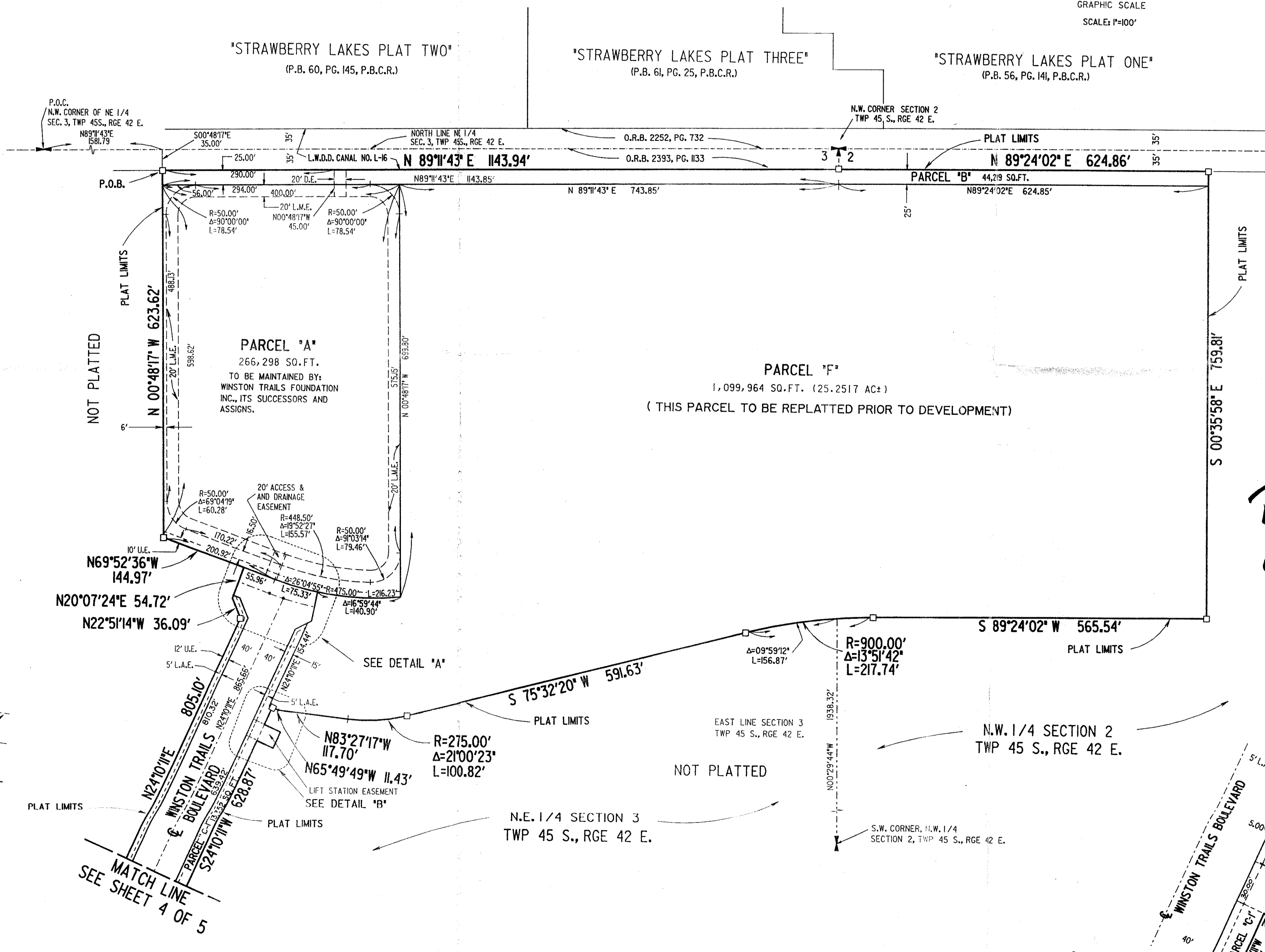
30



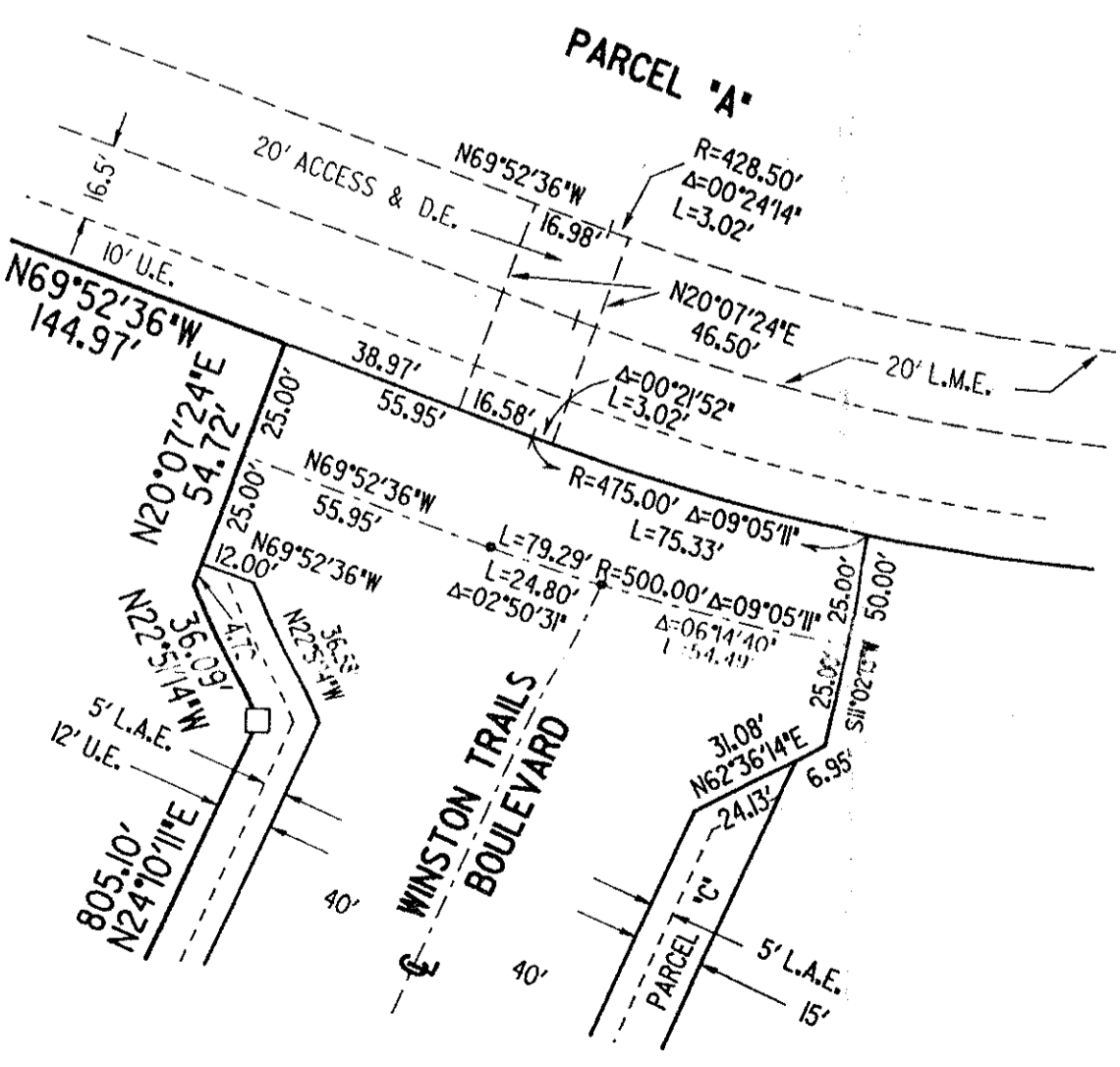
SHEET LOCATION MAP
 SCALE: 1"=1000'



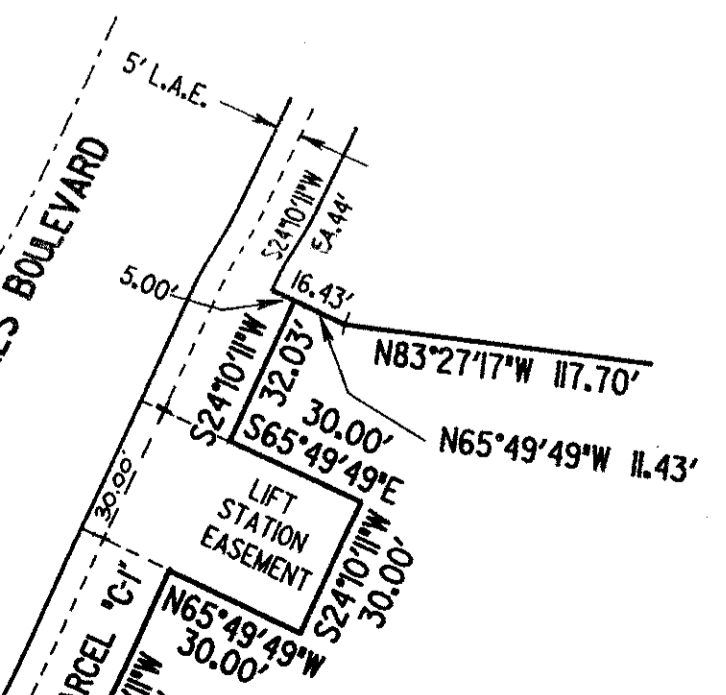
STATE OF FLORIDA
 COUNTY OF PALM BEACH
 THIS PLAT WAS FILED FOR RECORD
 AT _____ M, THIS _____ DAY
 OF _____ 1993, AND DULY
 RECORDED IN PLAT BOOK NO. _____
 ON PAGES _____ THRU _____
 DOROTHY H. WILKEN
 CLERK OF THE CIRCUIT COURT
 BY: _____ D.C.



PET. 87-112
 ALLOC. #0001



DETAIL "A"
 SCALE: 1"=40'



DETAIL "B"
 SCALE: 1"=40'

TAZ - 437
 WINSTON TRAILS
 PUB NAME
 SE 87-112
 ROAD # 34
 FLOOD ZONE B
 PAGE 28
 715B

0587-001
 WINSTON TRAILS PLAT ONE
 71/30