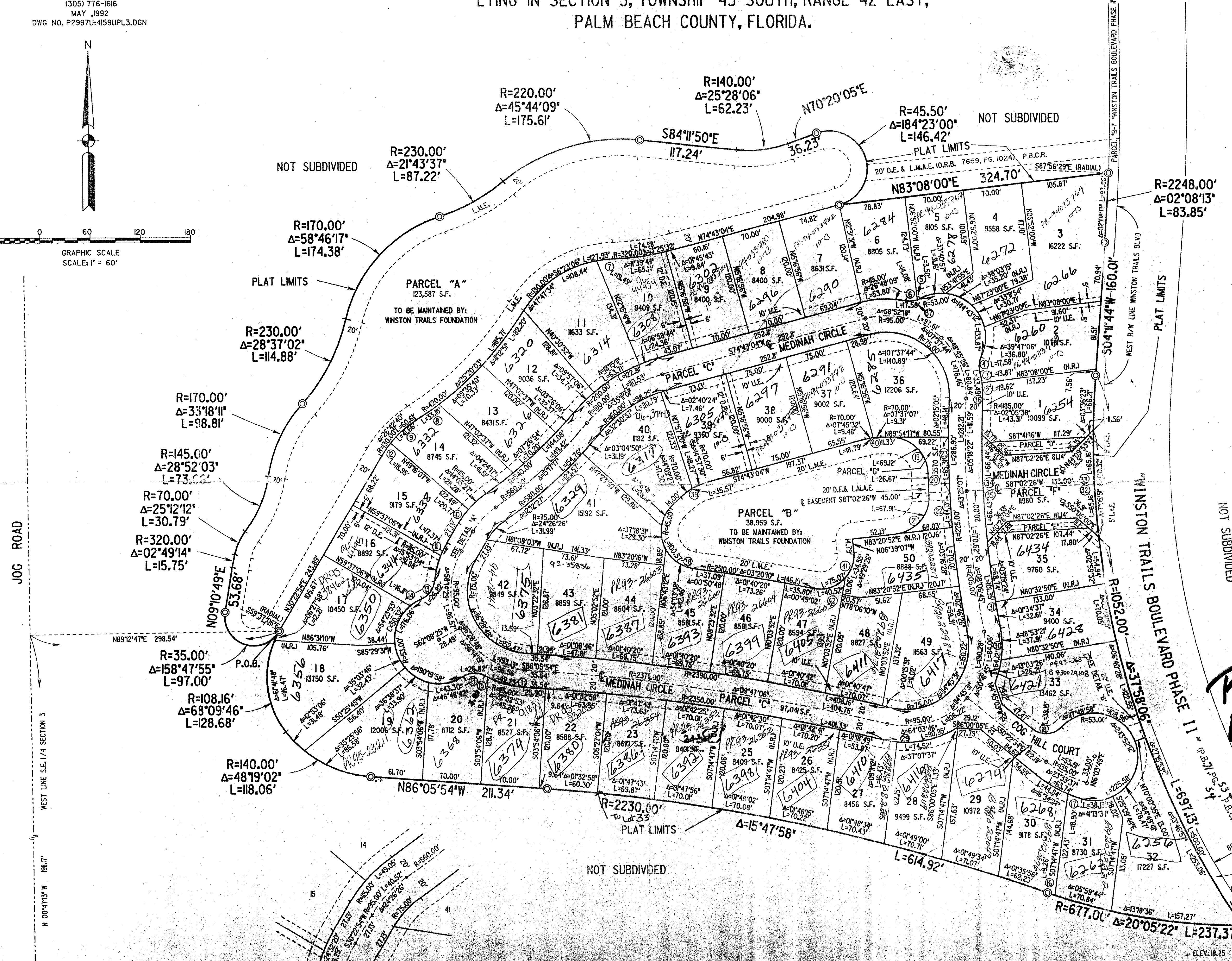
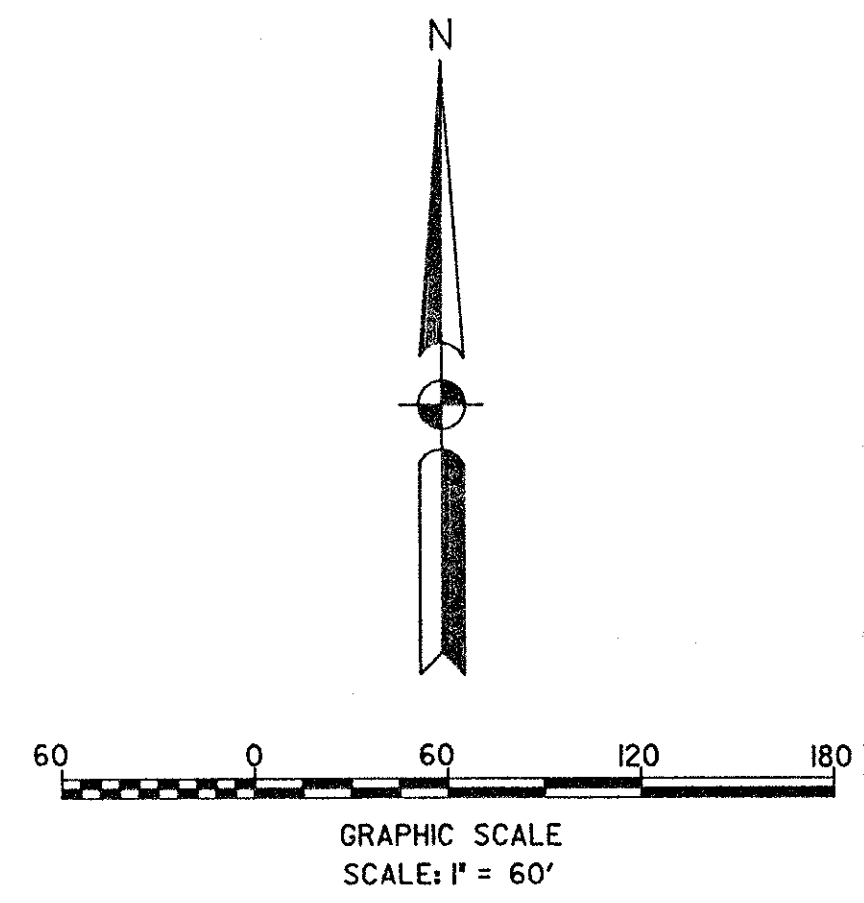


# WINSTON TRAILS PARCEL THREE

PART OF A P.U.D.  
LYING IN SECTION 3, TOWNSHIP 45 SOUTH, RANGE 42 EAST,  
PALM BEACH COUNTY, FLORIDA.

PREPARED BY:  
JON P. WEBER IN THE OFFICES OF  
KEITH AND SCHNARS, P.A.  
ENGINEERS - PLANNERS - SURVEYORS  
6500 NORTH ANDREWS AVENUE  
FORT LAUDERDALE, FLORIDA 33309  
(305) 776-1616  
MAY, 1992  
DWG NO. P2997U:4159UPL3.DGN

STATE OF FLORIDA  
COUNTY OF PALM BEACH  
THIS PLAT WAS FILED FOR RECORD  
AT \_\_\_\_\_ M. THIS \_\_\_\_\_ DAY  
OF \_\_\_\_\_ 199\_\_\_\_, AND DULY  
RECORDED IN PLAT BOOK NO. \_\_\_\_\_  
ON PAGES \_\_\_\_\_ THRU \_\_\_\_\_  
DOROTHY H. WILKEN  
CLERK OF THE CIRCUIT COURT  
BY: \_\_\_\_\_ D.C.



CURVE TABLE

1	R=115.00'	Δ=24°32'10"	L=49.25'
2	R=115.00'	Δ=09°46'34"	L=19.62'
3	R=115.00'	Δ=06°54'43"	L=13.87'
4	R=25.00'	Δ=40°17'26"	L=17.58'
5	R=25.00'	Δ=08°01'41"	L=3.50'
6	R=25.00'	Δ=32°15'45"	L=14.08'
7	R=130.00'	Δ=08°35'32"	L=19.49'
8	R=420.00'	Δ=04°31'32"	L=33.18'
9	R=130.00'	Δ=18°21'36"	L=41.66'
10	R=115.00'	Δ=10°20'59"	L=20.77'
11	R=115.00'	Δ=08°39'16"	L=17.37'
12	R=130.00'	Δ=08°21'04"	L=18.95'
13	R=25.00'	Δ=61°27'50"	L=26.82'
14	R=53.00'	Δ=17°25'00"	L=16.11'
15	R=115.00'	Δ=01°59'17"	L=3.99'
16	R=677.00'	Δ=00°47'03"	L=9.26'
17	R=155.00'	Δ=06°59'10"	L=18.90'
18	R=25.00'	Δ=87°25'48"	L=38.15'
19	R=45.00'	Δ=88°00'31"	L=69.12'
20	R=1250.00'	Δ=01°13'21"	L=26.67'
21	R=45.00'	Δ=86°27'59"	L=67.91'
22	R=1225.00'	Δ=02°03'51"	L=44.13'
23	R=1225.00'	Δ=03°03'17"	L=65.31'

CURVES 24-28 DELETED

29	R=115.00'	Δ=45°18'49"	L=90.95'
30	R=115.00'	Δ=31°56'47"	L=64.12'
31	R=1185.00'	Δ=04°54'02"	L=101.35'
32	R=1052.00'	Δ=03°32'55"	L=65.16'
33	R=1152.00'	Δ=03°32'56"	L=65.16'
34	R=1185.00'	Δ=03°12'44"	L=66.44'
35	R=1185.00'	Δ=03°12'44"	L=66.43'
36	R=115.00'	Δ=15°41'17"	L=33.49'
37	R=25.00'	Δ=40°17'26"	L=17.58'
38	R=45.00'	Δ=128°03'23"	L=100.57'
39	R=70.00'	Δ=29°06'57"	L=35.57'
40	R=70.00'	Δ=15°22'39"	L=18.79'
41	R=40.00'	Δ=107°32'01"	L=75.07'
42	R=40.00'	Δ=58°02'35"	L=40.52'

BOOK 71 / 6  
FLOOD ZONE MAP #170A.  
ZONING DISTRICTS  
QUAD #34  
SE 87-112  
PUD NAME WINSTON TRAILS

P.O.C.  
S.W. CORNER  
S.E. 1/4, SECTION 3-45-42

0587-004

WINSTON TRAILS PARCEL 3 71/57

NOTICE  
THERE MAY BE ADDITIONAL RESTRICTIONS  
THAT ARE NOT RECORDED ON THIS PLAT  
THAT MAY BE FOUND IN THE PUBLIC  
RECORDS OF THIS COUNTY.