

0533-017

70

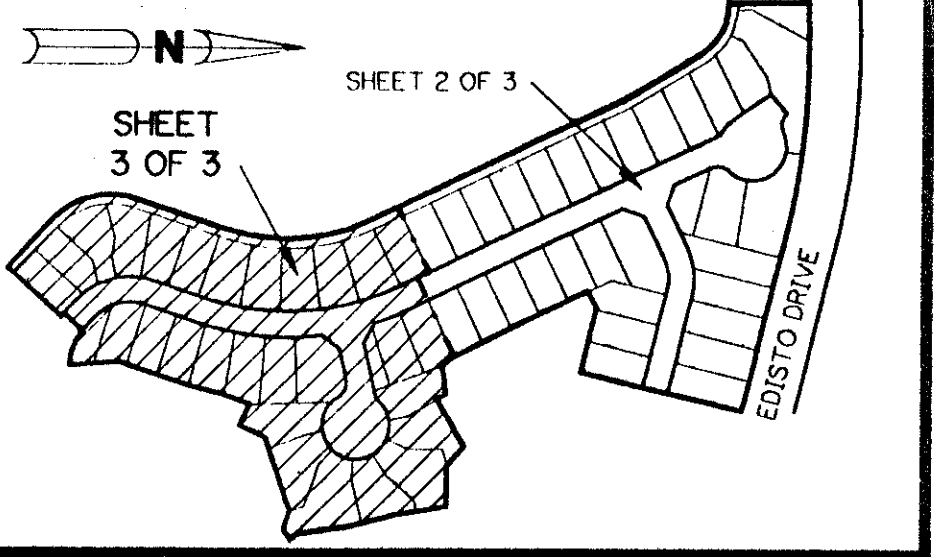
A PART OF LAKE CHARLESTON PLANNED UNIT DEVELOPMENT

# LAKE CHARLESTON - TRACT "I" - PLAT THREE

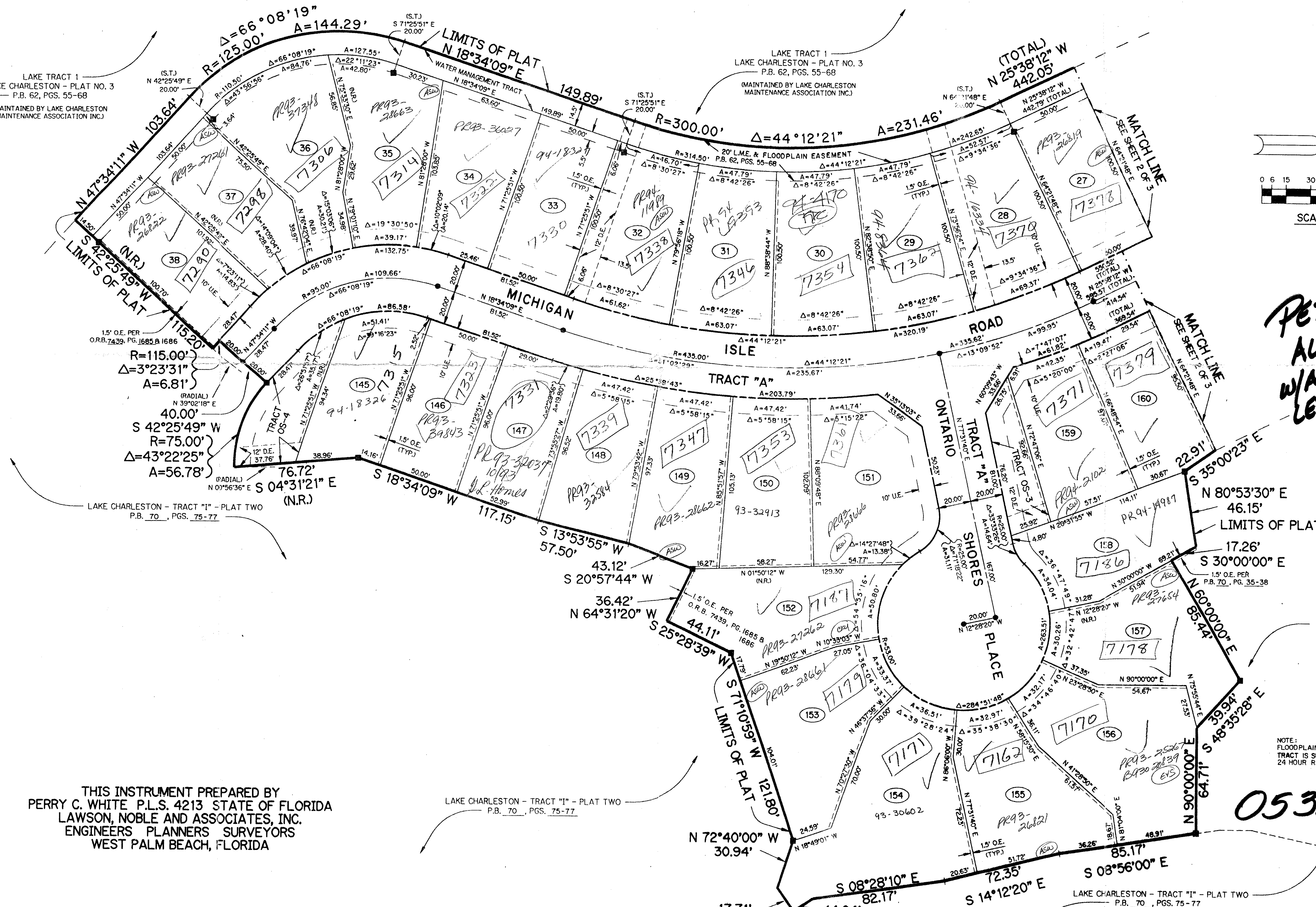
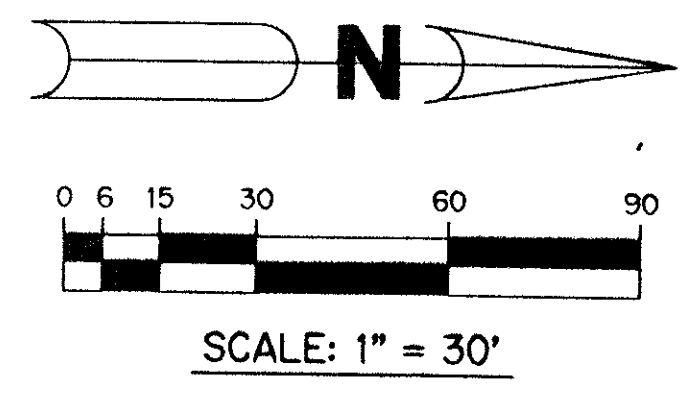
BEING A REPLAT OF A PORTION OF TRACT "I" ACCORDING TO THE PLAT OF LAKE CHARLESTON PLAT NO. 3 - P.U.D. AS RECORDED IN PLAT BOOK 62, PAGES 55 THROUGH 68 INCLUSIVE, OF THE PUBLIC RECORDS OF PALM BEACH COUNTY, FLORIDA. SECTION 9, TOWNSHIP 45 SOUTH, RANGE 42 EAST

SHEET 3 OF 3

MAY, 1992



KEY MAP  
N.T.S.



PET. 86-96A  
ALOC. # 0009  
W/ASSIGNMENT  
LETTER  
5/2/92

PAGE 68  
FLOOD MAP # 185A  
ZONING RTS  
SE 86-94  
ZIP CODE 33437  
TOWN LAKE CHARLESTON  
TAZ 439

THIS INSTRUMENT PREPARED BY  
PERRY C. WHITE P.L.S. 4213 STATE OF FLORIDA  
LAWSON, NOBLE AND ASSOCIATES, INC.  
ENGINEERS PLANNERS SURVEYORS  
WEST PALM BEACH, FLORIDA

LAKE CHARLESTON - TRACT "I" - PLAT TWO  
P.B. 70, PGS. 75-77

NOTE:  
FLOODPLAIN EASEMENT WITHIN WATER MANAGEMENT  
TRACT IS SUBJECT TO FLOODING DURING THE 3 YEAR  
24 HOUR RAINFALL EVENT.

0533-017  
71/70

LAKE CHARLESTON - TRACT "I" - PLAT TWO  
P.B. 70, PGS. 75-77  
LAKE CHARLESTON - TRACT "I" - PLAT THREE  
SHEET 3 OF 3