

THE TIDES AT NEWPORT BAY

BEING A REPLAT OF ALL OF TRACT A OF THE NEWPORT BAY CLUB, A P.U.D., AS RECORDED IN PLAT BOOK 56, PAGES 10 THRU 12 OF THE PUBLIC RECORDS OF PALM BEACH COUNTY, FLORIDA
IN PART OF SECTION 34, TOWNSHIP 46 SOUTH, RANGE 42 EAST
PALM BEACH COUNTY, FLORIDA
IN TWO SHEETS SHEET NO. 2

GEE & JENSON
ENGINEERS - ARCHITECTS - PLANNERS, INC.
WEST PALM BEACH, FLORIDA
JANUARY 1993

STATE OF FLORIDA
COUNTY OF PALM BEACH
THIS PLAT WAS FILED FOR
RECORD AT _____ M. THIS DAY
OF _____ 1993, AND DULY
RECORDED IN PLAT BOOK NO. _____
ON PAGES _____ THRU _____
DOROTHY MILKEN
CLERK CIRCUIT COURT
BY _____ D.C.

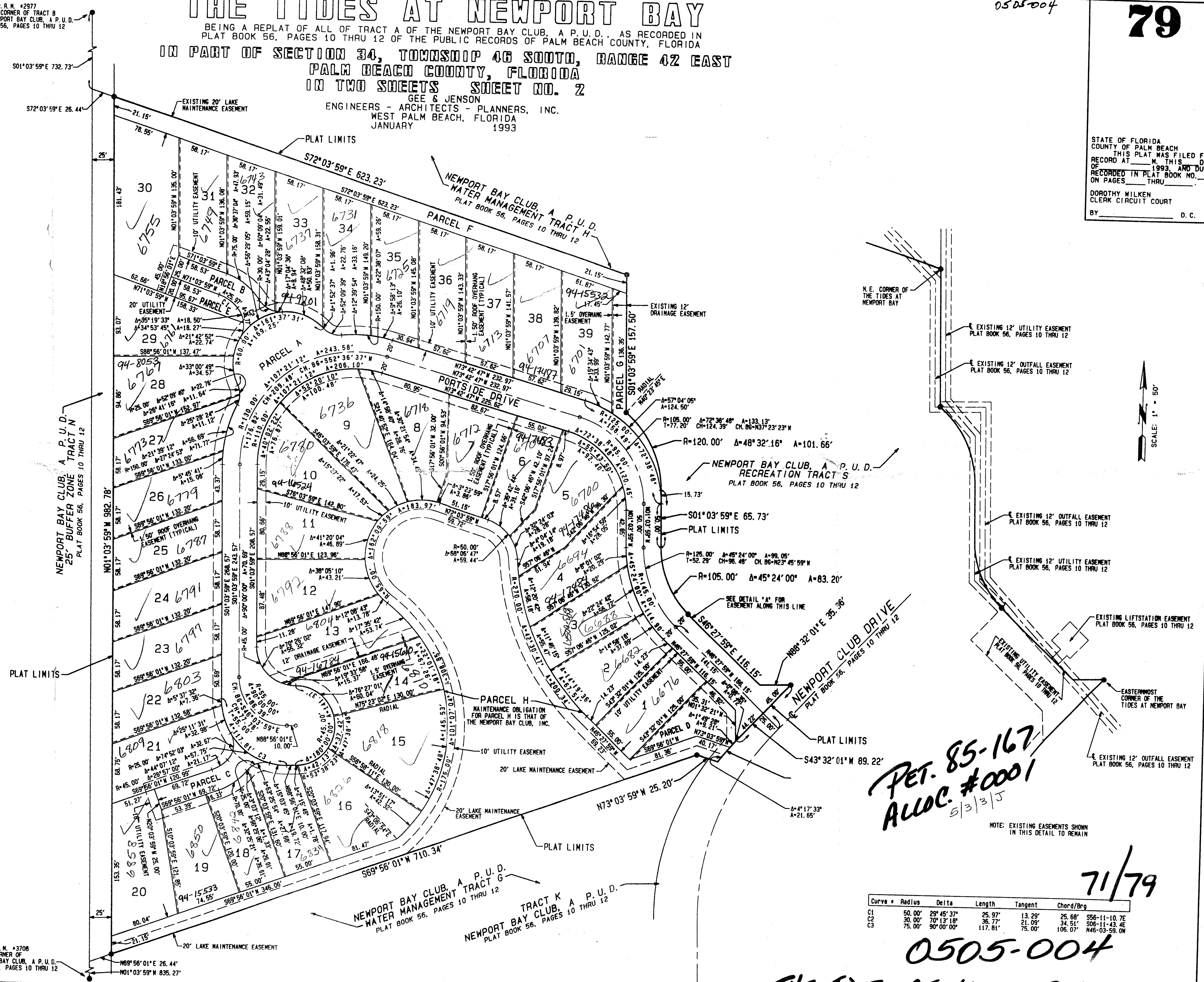


SUBDIVISION * TIDES AT Newport Bay
BOOK 71 PAGE 78
FLOOD ZONE B
QUAD # 37
DE 85-167
PUD CODE 33434
NEWPORT BAY

TAZ 603

COMPUTED _____
DRAWN _____
CHECKED _____
APPROVED _____
JOB NO. 92-437

EXISTING P.R.M. #3708
SOUTHWEST CORNER OF
THE NEWPORT BAY CLUB, A P.U.D.
PLAT BOOK 56, PAGES 10 THRU 12



PET. 85-167
ALOC. #0001
5/3/93

NOTE: EXISTING EASEMENTS SHOWN
IN THIS DETAIL TO REMAIN

| Curve | Radius | Delta | Length | Tangent | Chord/Brg |
|-------|--------|-----------|---------|---------|----------------------|
| C1 | 50.00' | 29°45'37" | 25.97' | 13.29' | 25.68' S56-11-10.7E |
| C2 | 30.00' | 70°13'18" | 36.77' | 21.09' | 34.51' S06-11-43.4E |
| C3 | 75.00' | 90°00'00" | 117.81' | 75.00' | 106.07' N46-03-59.0N |

0505-004
THE TIDES AT NEWPORT BAY

71/79