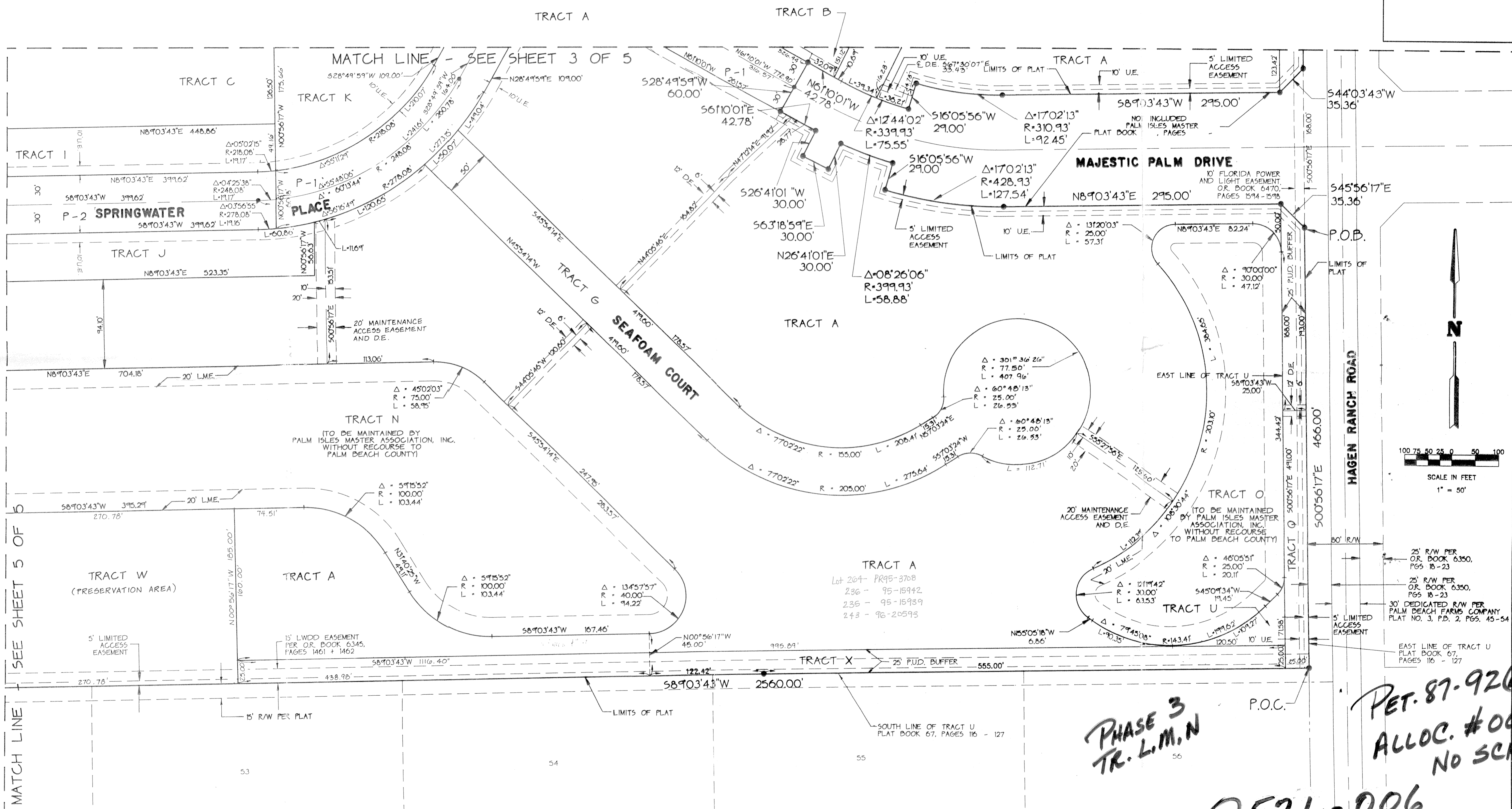
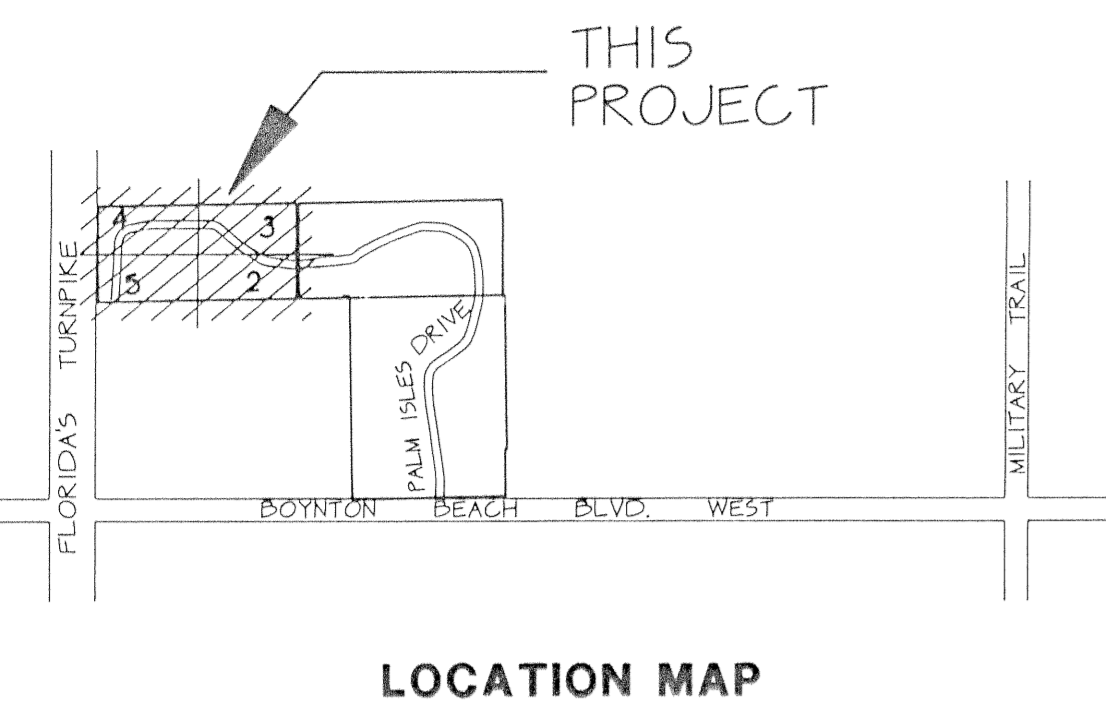


PALM ISLES III, A P.U.D.

A REPLAT OF A PORTION OF TRACT U OF PALM ISLES, A P.U.D.
AS RECORDED IN PLAT BOOK 67, PAGES 116 THROUGH 127 INCLUSIVE OF THE PUBLIC RECORDS OF PALM BEACH COUNTY, FLORIDA
ALL IN SECTION 21, TOWNSHIP 45 SOUTH, RANGE 42 EAST, PALM BEACH COUNTY, FLORIDA

THIS INSTRUMENT PREPARED BY JAMES E. PARK, P.L.S.
WILLIAMS, HATFIELD & STONER, INC. - ENGINEERS PLANNERS SURVEYORS
1325 SOUTH CONGRESS AVENUE, SUITE 118, BOYNTON BEACH, FLORIDA 33426

SHEET 2 OF 5



SEE SHEET 5 OF 10

TAZ 443

SEE SHEET 3 OF 5

TRACT A
Lot 204 - PR95-3708
236 - 95-15942
235 - 95-15939
243 - 96-20593

PHASE 3
TR. L.I.M.N

PET. 87-92(A)
ALLOC. #0001
NO SCHOOLS

0571-006

PALM ISLES III 71/90