

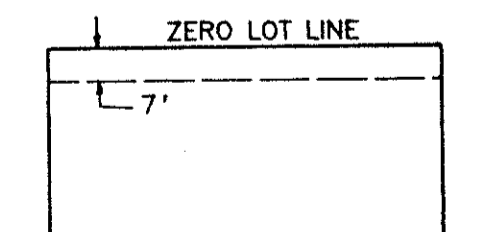
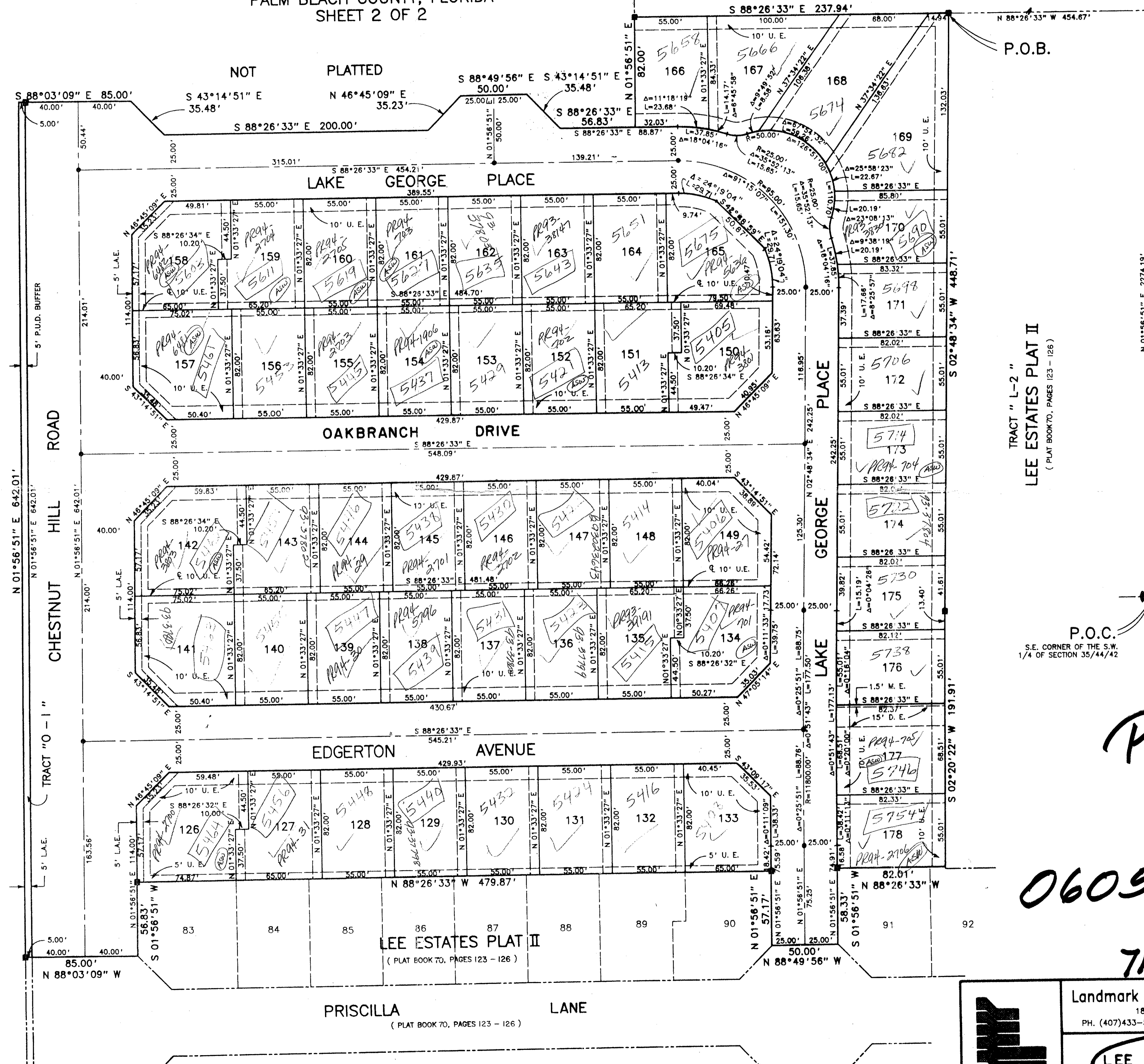
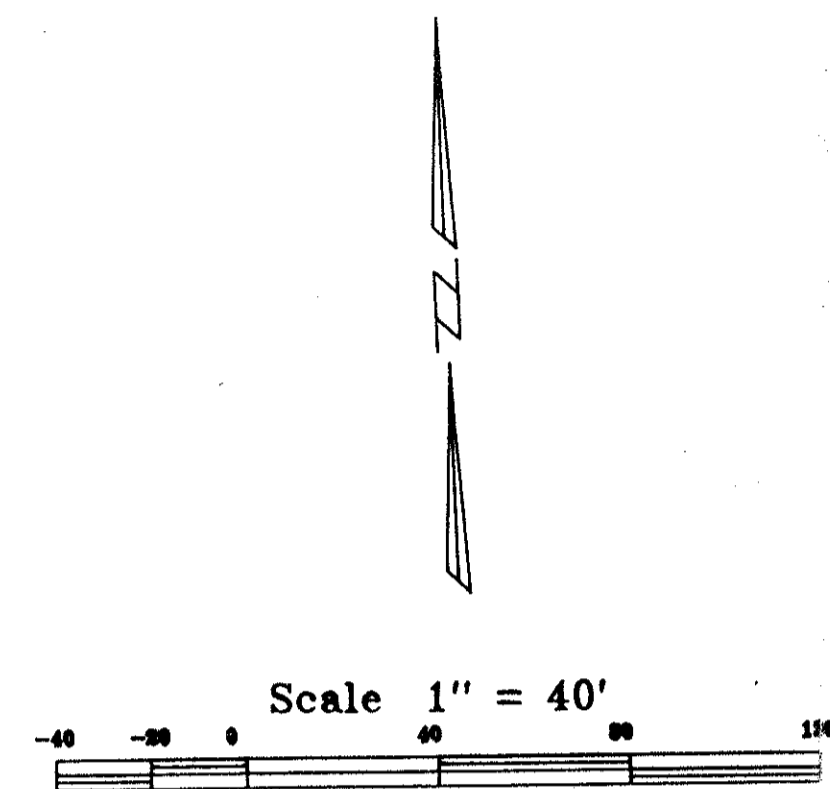
# LEE ESTATES PLAT III

A PLANNED UNIT DEVELOPMENT  
LYING IN SECTION 35, TOWNSHIP 44 SOUTH, RANGE 42 EAST,  
PALM BEACH COUNTY, FLORIDA  
SHEET 2 OF 2

TRACT "L-2"  
LEE ESTATES PLAT II  
( PLAT BOOK 70, PAGES 123 - 126 )

0605-003

STATE OF FLORIDA  
COUNTY OF PALM BEACH  
This Plat was filed for record at \_\_\_\_\_  
M. this \_\_\_\_\_ day of \_\_\_\_\_ 19\_\_\_\_  
and duly recorded in Plat Book No. \_\_\_\_\_  
on Page \_\_\_\_\_  
Dorothy H. Wilken, Clerk of the Circuit Court  
By \_\_\_\_\_ D.C.



NOTE: ALL LOTS HAVE A 7' MAINTENANCE EASEMENT SHOWN THIS:

P.O.C.  
S.E. CORNER OF THE S.W.  
1/4 OF SECTION 35/44/42

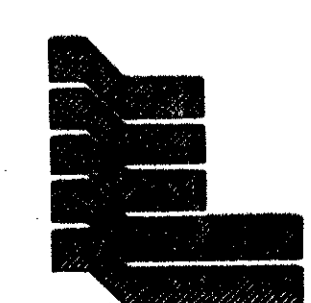
PET. 90-16

0605-003

71/103

LEE ESTATES PL 3  
PLAT 102  
PLAT 103  
PLAT 104  
PLAT 105  
PLAT 106  
PLAT 107  
PLAT 108  
PLAT 109  
PLAT 110  
PLAT 111  
PLAT 112  
PLAT 113  
PLAT 114  
PLAT 115  
PLAT 116  
PLAT 117  
PLAT 118  
PLAT 119  
PLAT 120  
PLAT 121  
PLAT 122  
PLAT 123  
PLAT 124  
PLAT 125  
PLAT 126  
PLAT 127  
PLAT 128  
PLAT 129  
PLAT 130  
PLAT 131  
PLAT 132  
PLAT 133  
PLAT 134  
PLAT 135  
PLAT 136  
PLAT 137  
PLAT 138  
PLAT 139  
PLAT 140  
PLAT 141  
PLAT 142  
PLAT 143  
PLAT 144  
PLAT 145  
PLAT 146  
PLAT 147  
PLAT 148  
PLAT 149  
PLAT 150  
PLAT 151  
PLAT 152  
PLAT 153  
PLAT 154  
PLAT 155  
PLAT 156  
PLAT 157  
PLAT 158  
PLAT 159  
PLAT 160  
PLAT 161  
PLAT 162  
PLAT 163  
PLAT 164  
PLAT 165  
PLAT 166  
PLAT 167  
PLAT 168  
PLAT 169  
PLAT 170  
PLAT 171  
PLAT 172  
PLAT 173  
PLAT 174  
PLAT 175  
PLAT 176  
PLAT 177  
PLAT 178  
PLAT 179  
PLAT 180  
PLAT 181  
PLAT 182  
PLAT 183  
PLAT 184  
PLAT 185  
PLAT 186  
PLAT 187  
PLAT 188  
PLAT 189  
PLAT 190  
PLAT 191  
PLAT 192  
PLAT 193  
PLAT 194  
PLAT 195  
PLAT 196  
PLAT 197  
PLAT 198  
PLAT 199  
PLAT 200

TAZ 349



Landmark Surveying & Mapping Inc.  
1850 FOREST HILL BOULEVARD  
PH. (407)433-5405 SUITE 100 W.P.B. FLORIDA

LEE ESTATES PLAT III