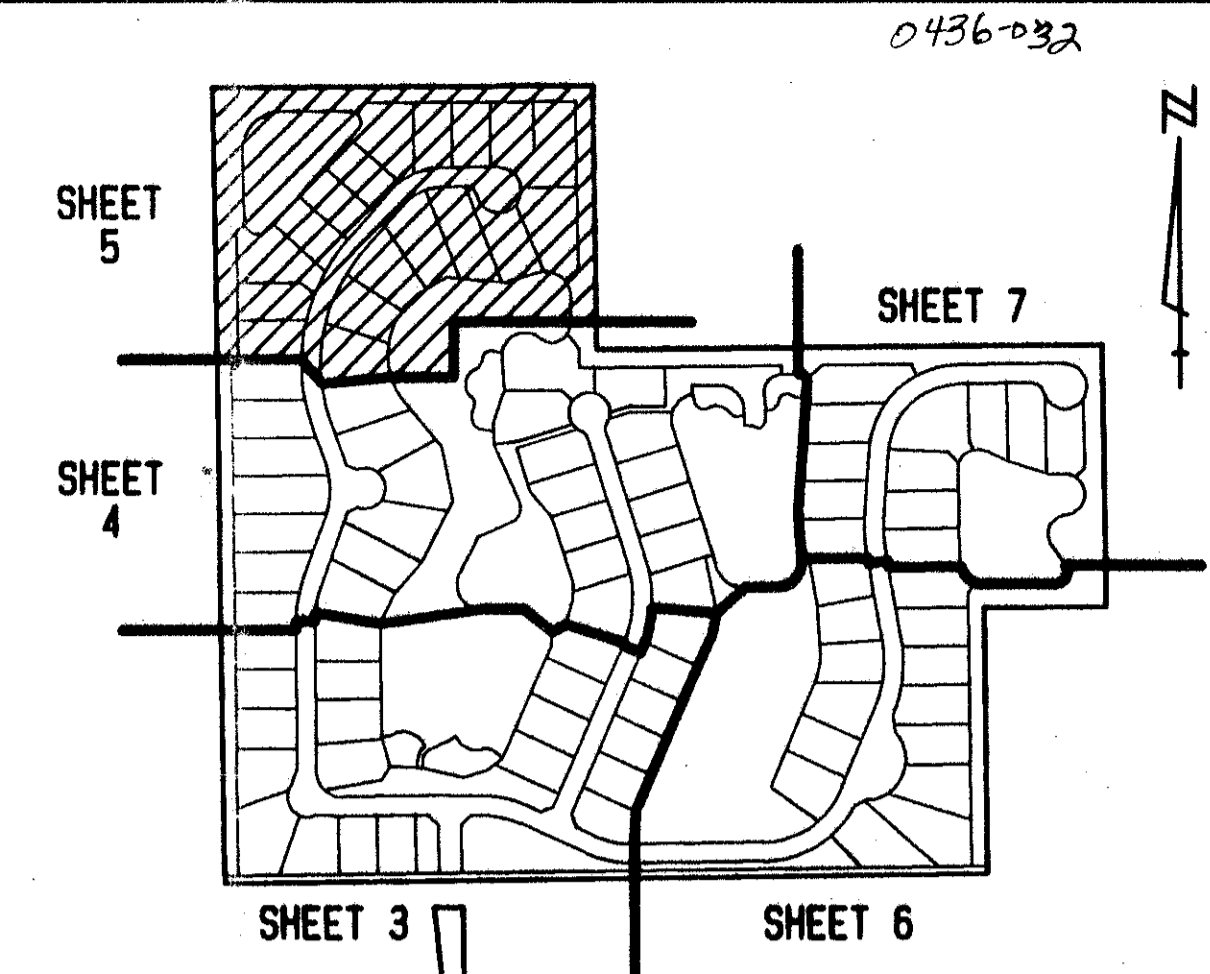


THE POLO OAKS

PART OF THE POLO CLUB P. U. D.
 SITUATE IN SECTION 26, TOWNSHIP 46 SOUTH, RANGE 42 EAST
 PALM BEACH COUNTY, FLORIDA
 AUGUST, 1993 SHEET 5 OF 7

UNPLATTED

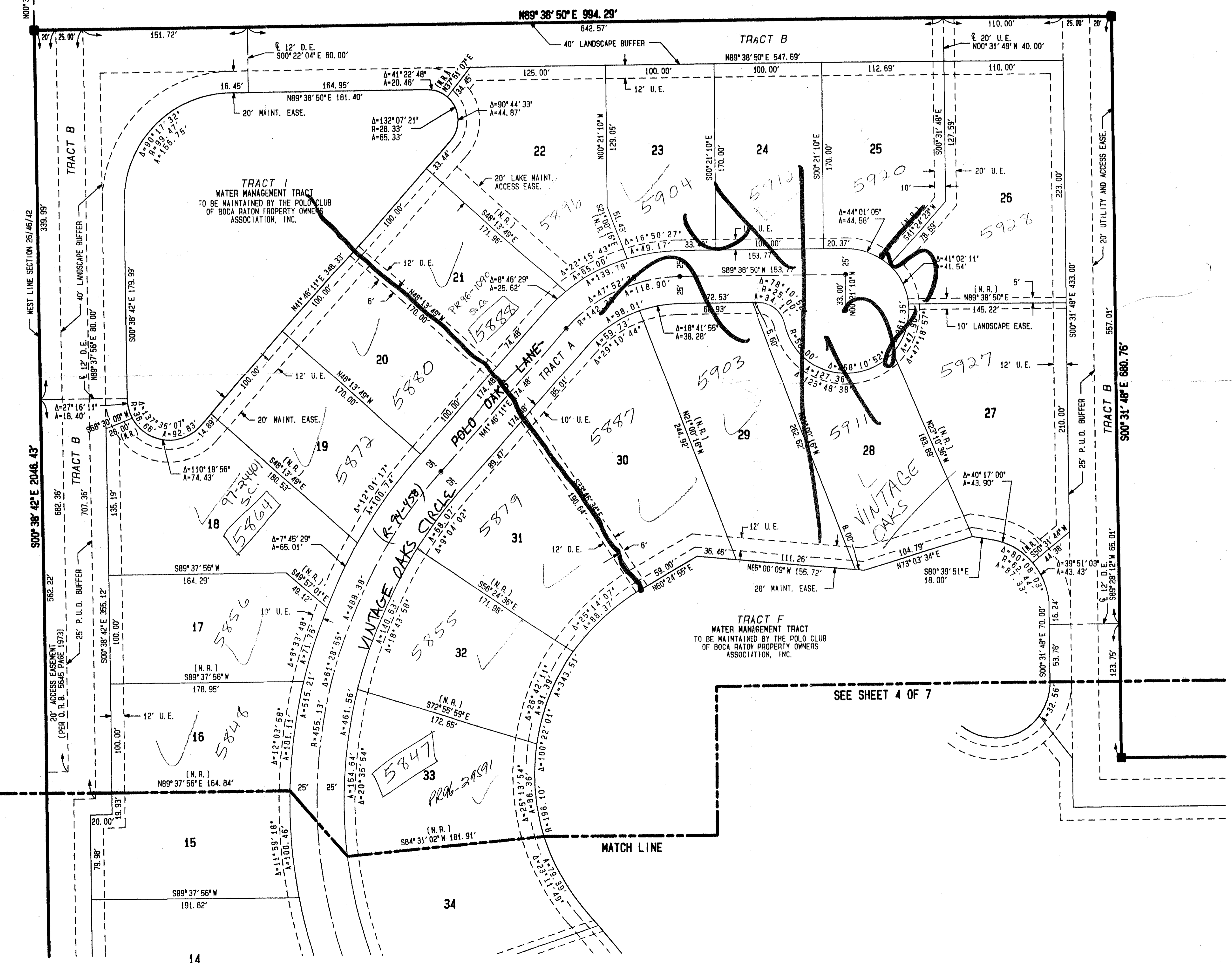
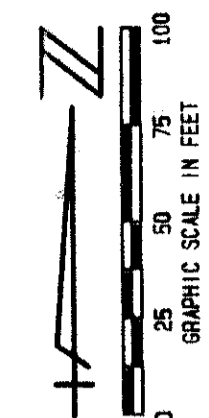


121

STATE OF FLORIDA
 COUNTY OF PALM BEACH
 THIS PLAT WAS FILED FOR
 RECORD _____ DAY OF _____
 AD, 1993 AND DULY RECORDED
 IN PLAT BOOK _____ ON PAGES
 AND _____
 DOROTHY H. WILKEN, CLERK
 BY: _____, D. C.

CIRCUIT COURT SEAL

FOUND PALM BEACH COUNTY
 BRASS DISK IN CONCRETE
 NW CORNER SECTION 26/46/42



SHEET INDEX MAP
 NOT TO SCALE

UNPLATTED

POLO OAKS
 BOX 71
 TAZ 477
 POLO CLUB

PET. 84-71
 ALLOC. #0001

0436-032

7/1/21

MOCK, ROOS & ASSOCIATES, INC. 5720 CORPORATE WAY, WEST PALM BEACH, FL 33407 (407) 683-3113	
SCALE: 1" = 50'	DATE: JUNE 1993
P. A. NO. 93-137.00	DWG. NO. 46-42-26-6
PART OF 'THE POLO CLUB P. U. D.' SECTION 26, TOWNSHIP 46 SOUTH, RANGE 42 EAST	

SHEET 5 OF 7