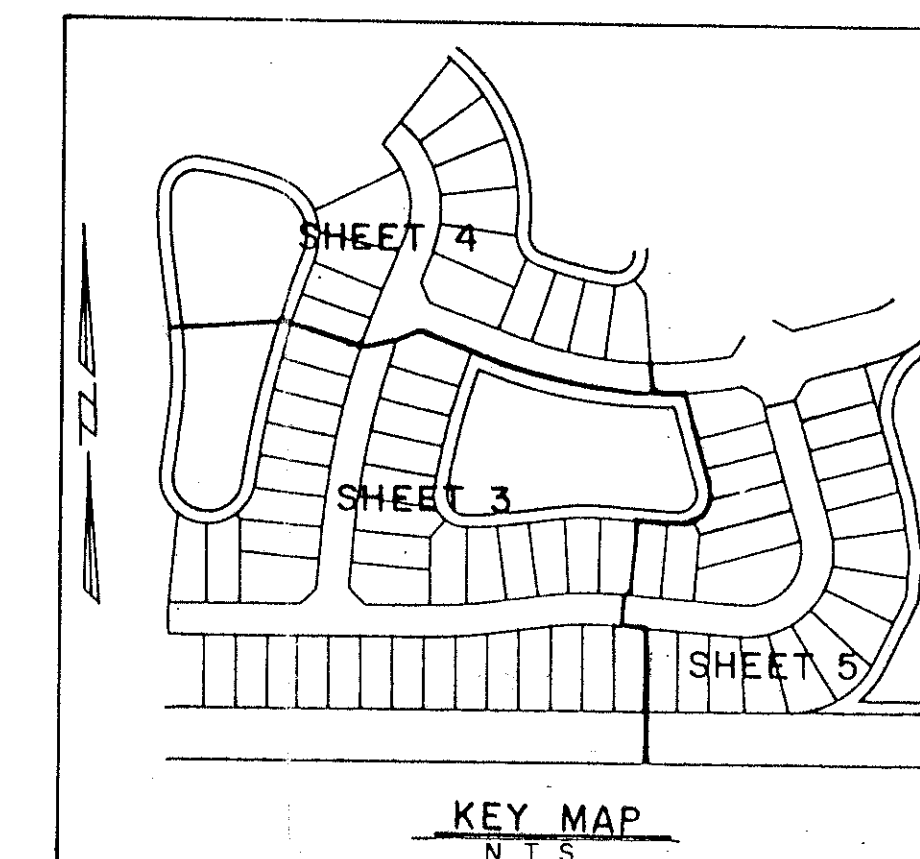


ABERDEEN - PLAT NO. 17

A PORTION OF A P.U.D.
 LYING IN SECTION 16, TOWNSHIP 45 SOUTH, RANGE 42 EAST
 BEING A REPLAT OF A PORTION OF ABERDEEN - PLAT NO. 2 AS RECORDED IN PLAT
 BOOK 55, PAGES 11 THRU 22, PUBLIC RECORDS OF PALM BEACH COUNTY, FLORIDA.
 SHEET 3 OF 5
 AUGUST ,1993

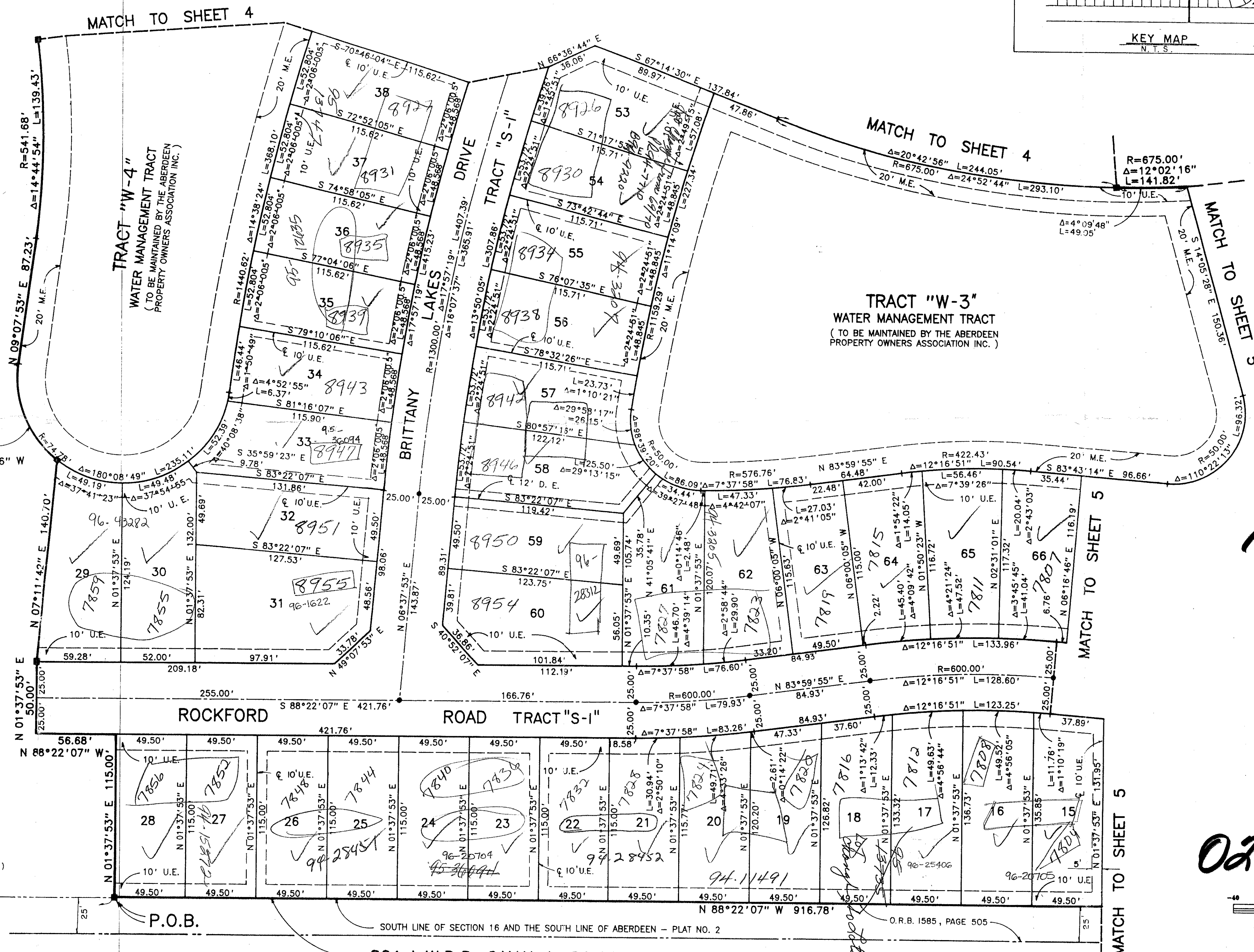
0270-019

130



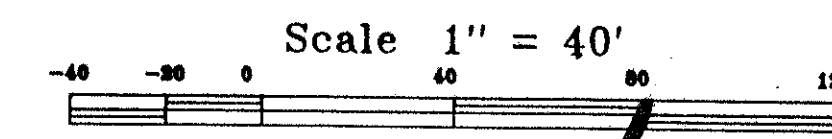
STATE OF FLORIDA
 COUNTY OF PALM BEACH
 This Plat was filed for record at _____
 M. this _____ day of _____ 19____
 and duly recorded in Plat Book No. _____
 on Page _____
 Dorothy H. Wilken, Clerk of the Circuit Court
 By _____ D.C.

ABERDEEN - PLAT NO. 2
 (PLAT BOOK 55, PAGES 11 THRU 22)



PET. 80-153
 ALLOC. #0001

0270-019



71/130

PLAT 17
 130
 185A
 38437
 49
 44
 141514
 ABERDEEN

P.O.C.
 SOUTHWEST CORNER OF SECTION 16
 TOWNSHIP 45 SOUTH, RANGE 42 EAST

EXISTING P.R.M. (P.L.S. NO. 3978)
 S.W. CORNER OF ABERDEEN PLAT
 NO. 2 (PLAT BOOK 55, PAGES 11-22)

80' L.W.D.D. CANAL L-22 RIGHT-OF-WAY

Landmark Surveying & Mapping Inc.
 1850 FOREST HILL BOULEVARD
 PH. (407)433-5405 SUITE 100 W.P.B. FLORIDA

ABERDEEN - PLAT NO. 17