

PLAT OF CORAL LAKES III

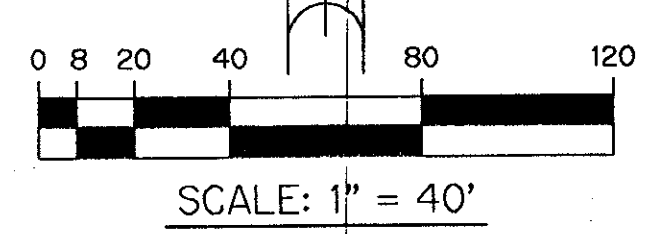
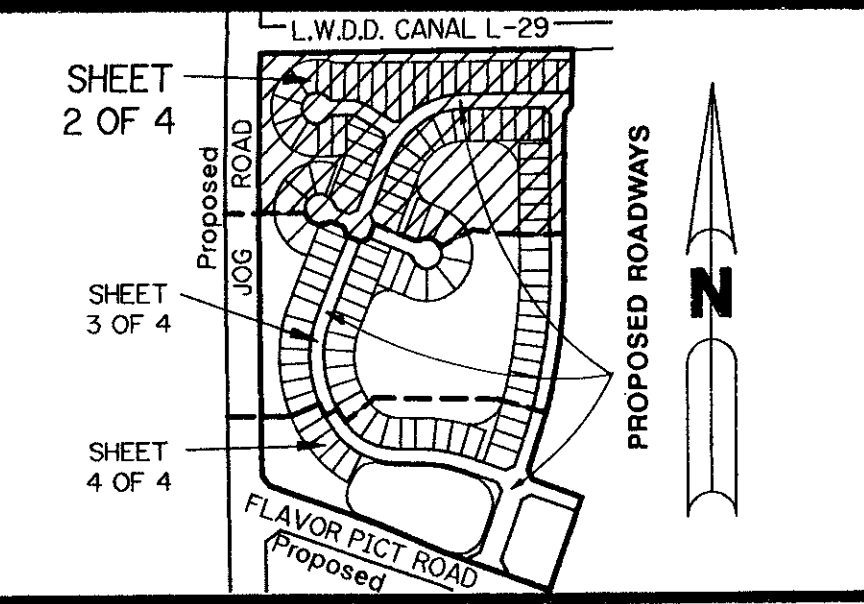
BEING A REPLAT OF A PORTION OF TRACT "A"
OF THE PLAT OF CORAL LAKES AS RECORDED IN PLAT BOOK 67, PAGES 197-198
LYING IN SECTION 3, TOWNSHIP 46 SOUTH, RANGE 42 EAST,
PALM BEACH COUNTY, FLORIDA

- LEGEND**
- L.A.E. - LIMITED ACCESS EASEMENT
 - R - RADIUS
 - Δ - DELTA ANGLE
 - P.B. - PLAT BOOK
 - P.G.S. - PAGES
 - O.R. - OFFICIAL RECORD
 - P.U.D. - PLANNED UNIT DEVELOPMENT
 - P.L.S. - PROFESSIONAL LAND SURVEYOR
 - N.R. - NOT RADIAL
 - - SURVEY TIE LINE
 - - PERMANENT REFERENCE MONUMENT, PLS #4901
 - - PERMANENT CONTROL POINT, PLS #4901
 - O.E. - OVERHANG EASEMENT
 - U.E. - UTILITY EASEMENT
 - D.E. - DRAINAGE EASEMENT
 - FPL - FLORIDA POWER AND LIGHT COMPANY
 - FE - FLOOD PLAIN EASEMENT
 - OS - OPEN SPACE
 - O.R.B. - OFFICIAL RECORD BOOK
 - R.O.W. - RIGHT-OF-WAY

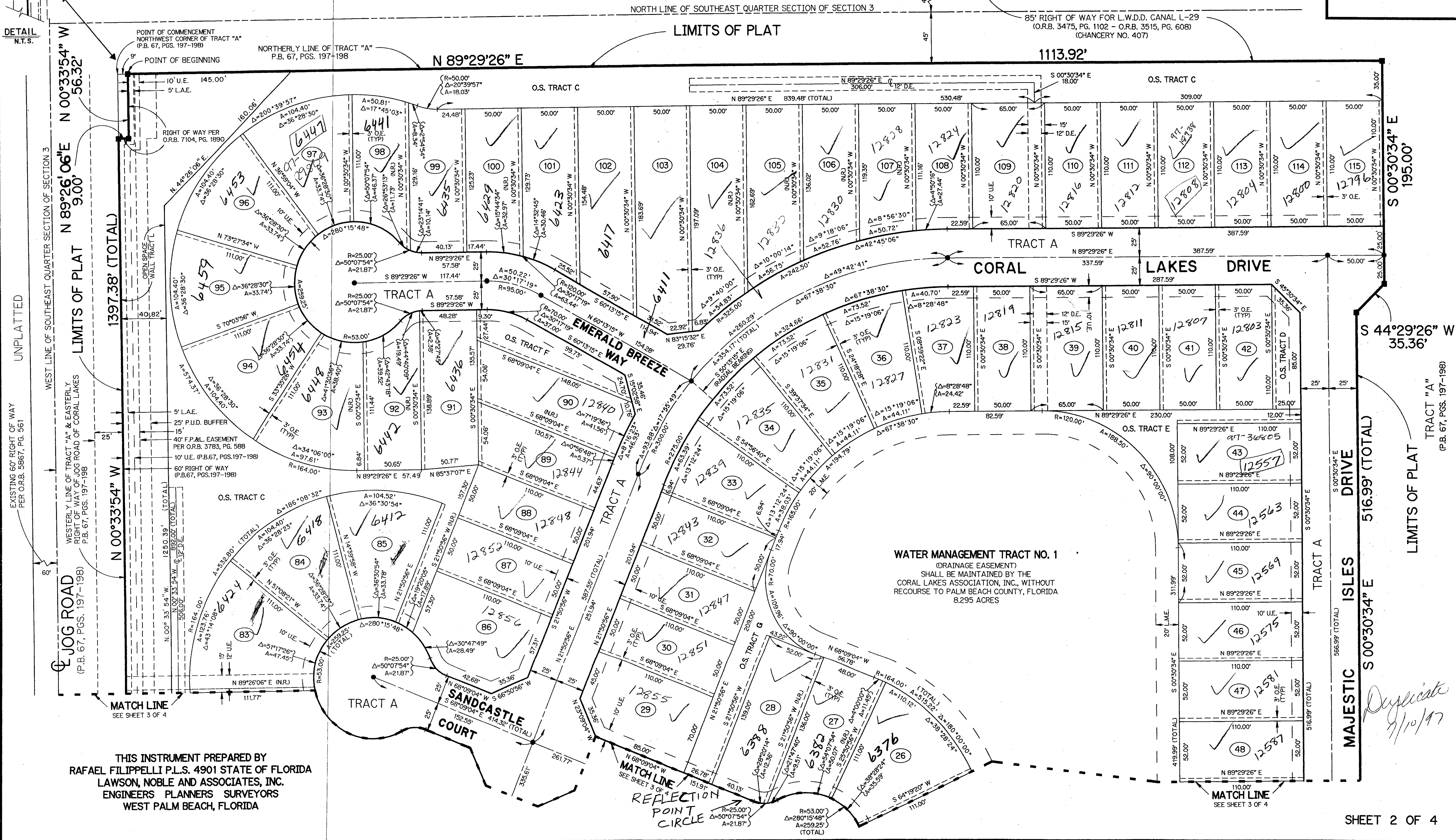
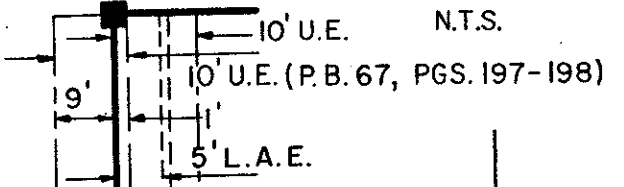
PIPERS GLEN PLAT NO. 1
(P.B. 431 PGS. 97-101)

JANUARY, 1993 SHEET 2 OF 4

PIPERS GLEN PLAT NO. 1
(P.B. 431 PGS. 97-101)



KEY MAP



WATER MANAGEMENT TRACT NO. 1
(DRAINAGE EASEMENT)
SHALL BE MAINTAINED BY THE
CORAL LAKES ASSOCIATION, INC., WITHOUT
RECOURSE TO PALM BEACH COUNTY, FLORIDA
8.295 ACRES

THIS INSTRUMENT PREPARED BY
RAFAEL FILIPPELLI P.L.S. 4901 STATE OF FLORIDA
LAWSON, NOBLE AND ASSOCIATES, INC.
ENGINEERS PLANNERS SURVEYORS
WEST PALM BEACH, FLORIDA

SUBDIVISION: CORAL LAKES III
BOOK 71 PAGE 150 FLOOD MAP # 200A
FLOOD ZONE B ZONING AR
MAP # 36
SE NPN 210 CODE 33437
PUD NAME CORAL LAKES

TAZ 456

TRACT "A"
(P.B. 67, PGS. 197-198)

MAJESTIC ISLES DRIVE
S 00°30'34" E 516.99' (TOTAL)

Duplicate
9/10/97