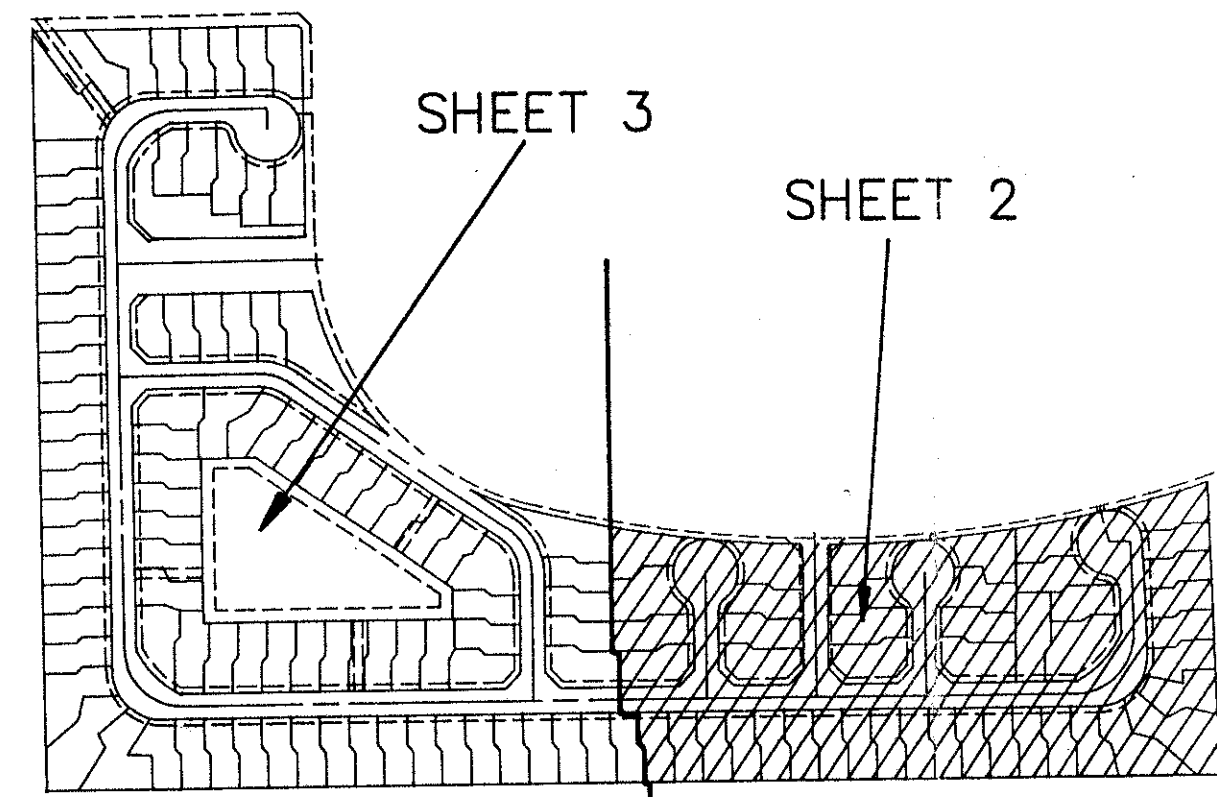


THE PLAT OF COSTA BRAVA, A P.U.D.
 BEING A REPLAT OF A PORTION OF TRACT E OF THE PLAT OF
 BOCA POINTE NO. 4 AS RECORDED IN PLAT BOOK 43,
 AT PAGES 194 THROUGH 196
 LYING IN SECTION 34, TOWNSHIP 47 SOUTH, RANGE 42 EAST
 PALM BEACH COUNTY, STATE OF FLORIDA



INDEX MAP

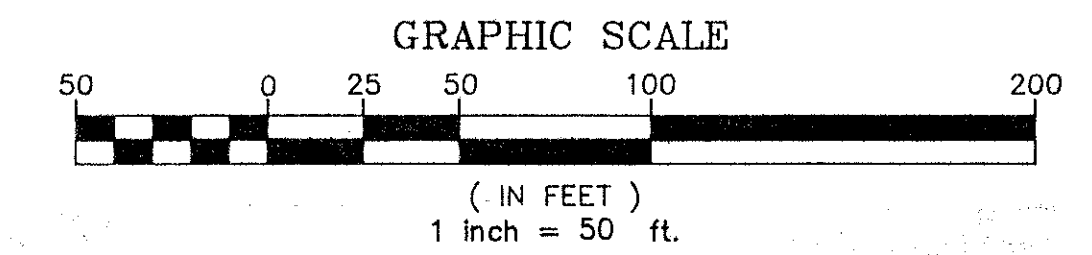
STATE OF FLORIDA SS
 COUNTY OF PALM BEACH
 This plat was filed for record at
 this _____ day of _____
 1993 and duly recorded in
 Plat Book No. _____ on page _____
 DOROTHY H. WILKEN, Clerk Circuit Court
 By: _____

TRACT D
 BOCA POINTE NO. 4
 P.B. 43, PGS. 194-196

TRACT 75C
 BOCA DEL MAR NO. 8
 (P.B. 30, PGS. 238-240)

P.B. 43, PGS. 194-196

BUENAVISTA (P.B. 35, PGS. 131-132)



*PET. 73-85E
 ROADS 1192° SFD's
 909° PER UNIT MULTI*

- LEGEND:
- R.B. = RADIAL BEARING
 - O.A. = OVER ALL DISTANCE
 - U.E. = UTILITY EASEMENT
 - P.B. = PLAT BOOK
 - D.E. = DRAINAGE EASEMENT
 - L.A.E. = LIMITED ACCESS EASEMENT
 - ESMT. = EASEMENT
 - O.R.B. = OFFICIAL RECORDS BOOK
 - PG. = PAGE
 - L.M.E. = LANDSCAPE MAINTENANCE EASEMENT
 - = P.C.P. (PERMANENT CONTROL POINTS) LB#4241
 - = P.R.M. (PERMANENT REFERENCE MONUMENTS) LB# 4241

SHEET 2 OF 3 SHEETS

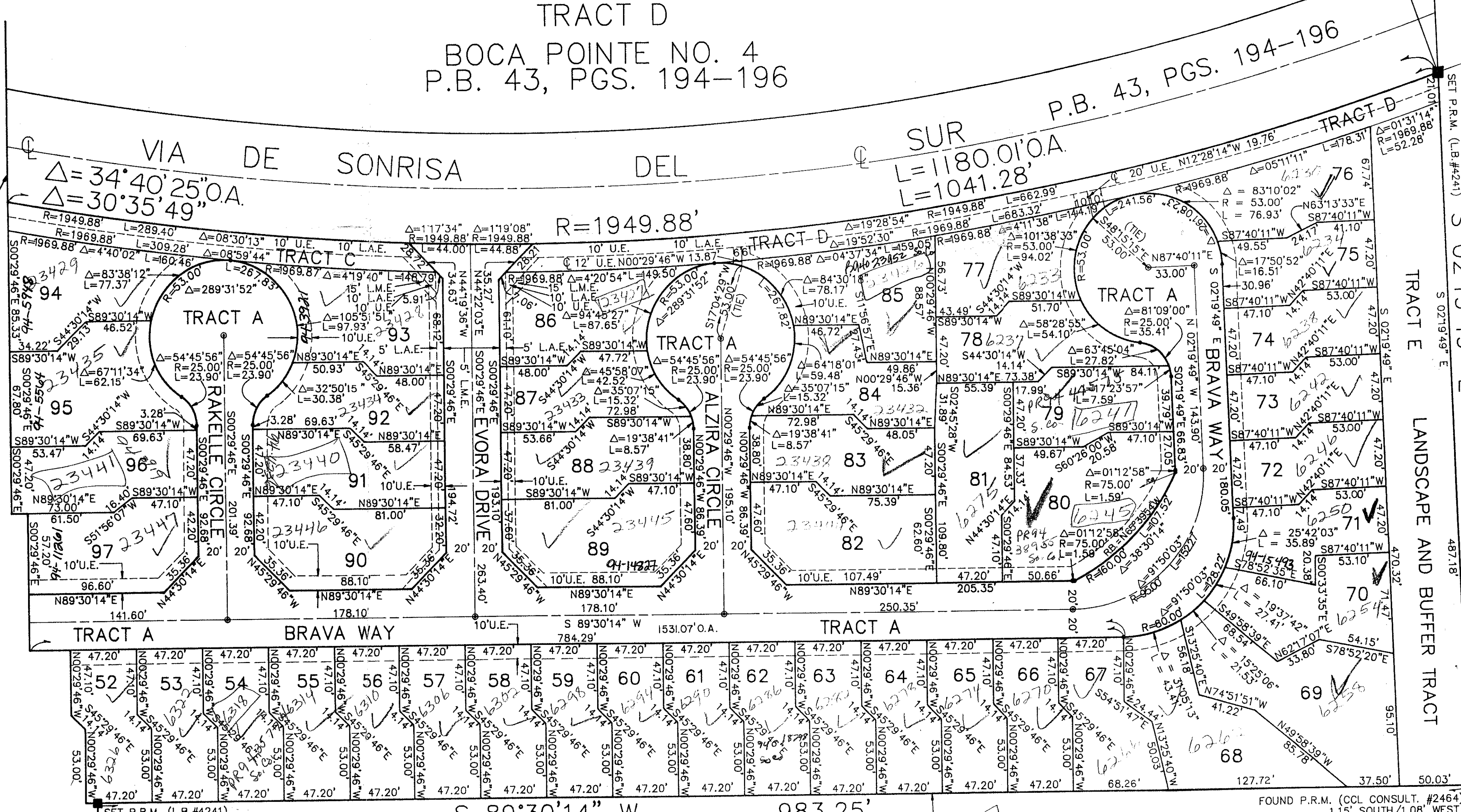
F.R.S. & ASSOCIATES
 LAND SURVEYORS AND LAND PLANNERS
 901 NORTHPOINT PARKWAY, SUITE 301
 WEST PALM BEACH, FLORIDA 33407 (407) 478-7178

SCALE: 1" = 50'
 DATE: 4/14/93
 APPROVED BY: _____
 PLOTTED BY: David L. Smith
 JOB NUMBER: 92-S-46A

THE PLAT OF COSTA BRAVA, A P.U.D.
 BEING A REPLAT OF A PORTION OF
 TRACT E OF THE PLAT OF BOCA POINTE NO. 4

0211-039

REVISIONS	BY	DATE



HILLSBORO CANAL
 (255' RIGHT-OF-WAY)

NORTH LINE OF HILLSBORO CANAL RIGHT-OF-WAY AS RECORDED
 IN O.R.B. 3600, PAGE 141, AND AS DEDICATED ON THE PLAT OF
 BOCA POINTE NO. 4, PLAT BOOK 43, PAGE 196.

MATCH LINE SEE SHEET 3 OF 3

TAZ 682

SUBDIVISION * COSTA BRAVA
 BOOK 71 FLOOD MAP # 240B
 QUAD # 39 ZONING RS
 DE 73-85 ZIP CODE 33433
 P.O. NAME BOCA POINTE