

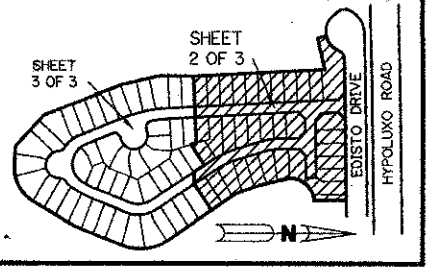
0533-023

179

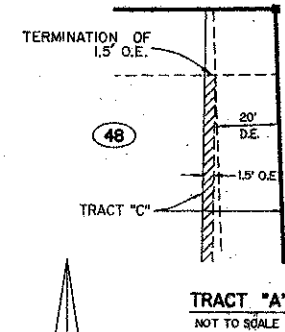
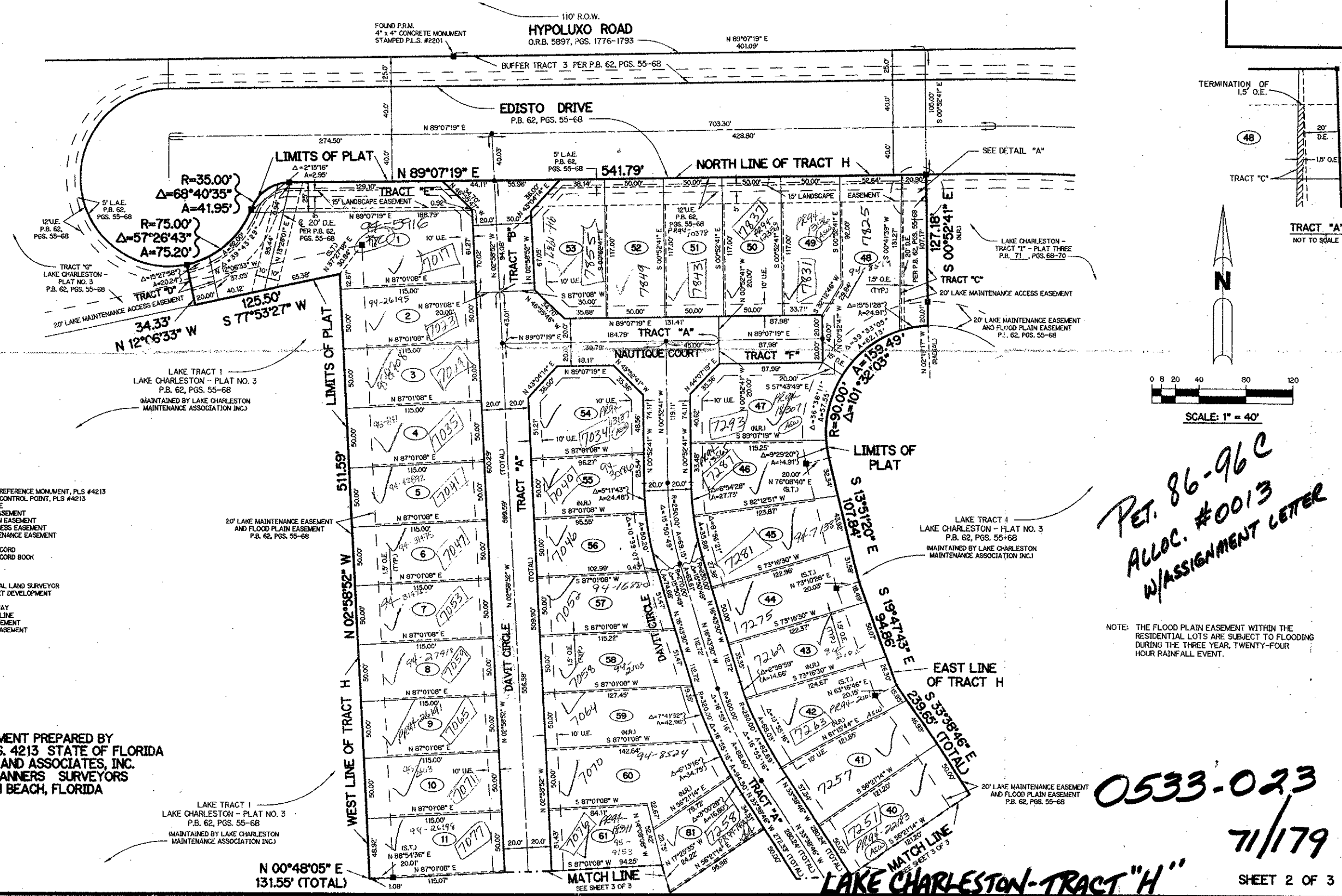
A PART OF LAKE CHARLESTON PLANNED UNIT DEVELOPMENT LAKE CHARLESTON - TRACT "H"

BEING A REPLAT OF ALL OF TRACT "H" ACCORDING TO THE PLAT OF LAKE CHARLESTON PLAT NO. 3 - P.U.D. AS RECORDED IN PLAT BOOK 62, PAGES 55 THROUGH 68, INCLUSIVE, OF THE PUBLIC RECORDS OF PALM BEACH COUNTY, FLORIDA. SECTION 9, TOWNSHIP 45 SOUTH, RANGE 42 EAST

SHEET 2 OF 3 JULY, 1993



KEY MAP
N.T.S.



LEGEND:

- PERMANENT REFERENCE MONUMENT, PLS #4213
- PERMANENT CONTROL POINT, PLS #4213
- △ DELTA ANGLE
- DE DRAINAGE EASEMENT
- FE FLOOD PLAIN EASEMENT
- L.A.E. LIMITED ACCESS EASEMENT
- L.M.E. LAKE MAINTENANCE EASEMENT
- NR NOT RADIAL
- OR OFFICIAL RECORD
- O.R.B. OFFICIAL RECORD BOOK
- O.S. OPEN SPACE
- P.B. PLAT BOOK
- P.G.S. PAGES
- P.L.S. PROFESSIONAL LAND SURVEYOR
- P.U.D. PLANNED UNIT DEVELOPMENT
- R RADIUS
- R.O.W. RIGHT-OF-WAY
- S.T. SURVEY TIE LINE
- U.E. UTILITY EASEMENT
- O.E. OVERHANGING EASEMENT

*PET. 86-96C
ALLOC. #0013
W/ASSIGNMENT LETTER*

NOTE: THE FLOOD PLAIN EASEMENT WITHIN THE RESIDENTIAL LOTS ARE SUBJECT TO FLOODING DURING THE THREE YEAR, TWENTY-FOUR HOUR RAINFALL EVENT.

0533-023

7/1/79

SHEET 2 OF 3

SUBDIVISION # TRACT H
BOOK 71 PAGE 178
FLOOD MAP # RSA
FLOOD ZONE B
QUAD # 44
GE # 86-96
TAZ 439
LAKE CHARLESTON

THIS INSTRUMENT PREPARED BY
PERRY C. WHITE P.L.S. 4213 STATE OF FLORIDA
LAWSON, NOBLE AND ASSOCIATES, INC.
ENGINEERS PLANNERS SURVEYORS
WEST PALM BEACH, FLORIDA

LAKE TRACT 1
LAKE CHARLESTON - PLAT NO. 3
P.B. 62, PGS. 55-68
MAINTAINED BY LAKE CHARLESTON
MAINTENANCE ASSOCIATION (MCA)

LAKE TRACT 1
LAKE CHARLESTON - PLAT NO. 3
P.B. 62, PGS. 55-68
MAINTAINED BY LAKE CHARLESTON
MAINTENANCE ASSOCIATION (MCA)

20' LAKE MAINTENANCE EASEMENT AND FLOOD PLAIN EASEMENT P.B. 62, PGS. 55-68

LAKE CHARLESTON-TRACT "H"