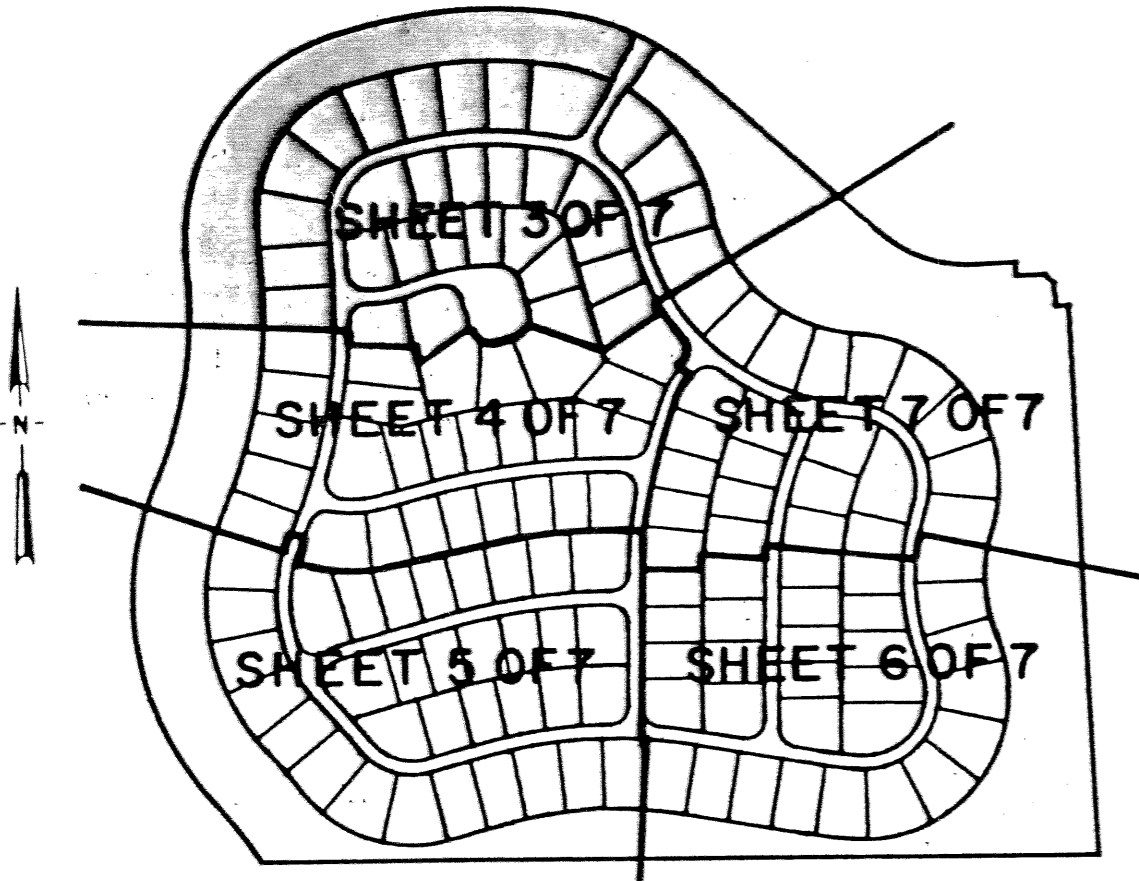


STATE OF FLORIDA
COUNTY OF PALM BEACH
This plat was filed for record at _____, this _____ day of _____, 1994, and duly recorded in Plat Book No. _____ on Pages _____ thru _____.
MILTON T. BAUER
Clerk Circuit Court
By: _____

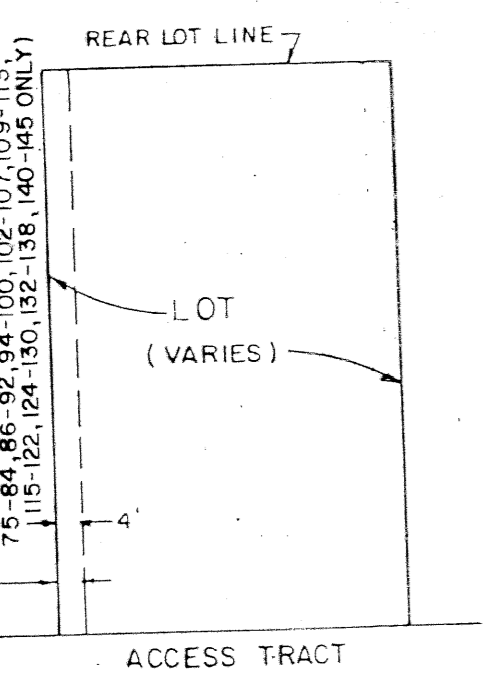
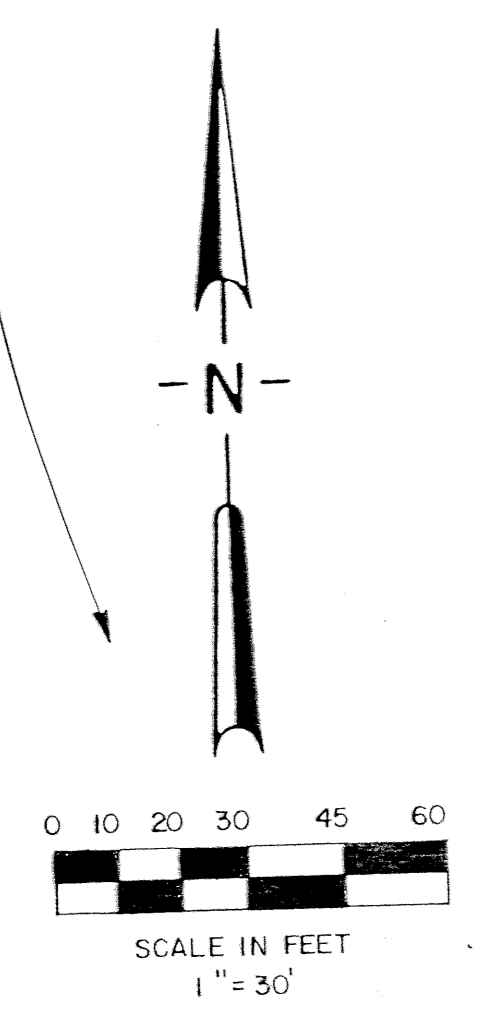
OLIVE TREE - PARCEL 6B

A REPLAT OF PARCEL 6B OF
OLIVE TREE - PHASE 6A OF THE RIVER BRIDGE P.U.D., (P.B. 71, PGS. 181 - 182)
LYING IN SECTION 10, TOWNSHIP 44 SOUTH, RANGE 42 EAST
CITY OF GREENACRES, PALM BEACH COUNTY, FLORIDA.
JANUARY 1994
SHEET 3 OF 7



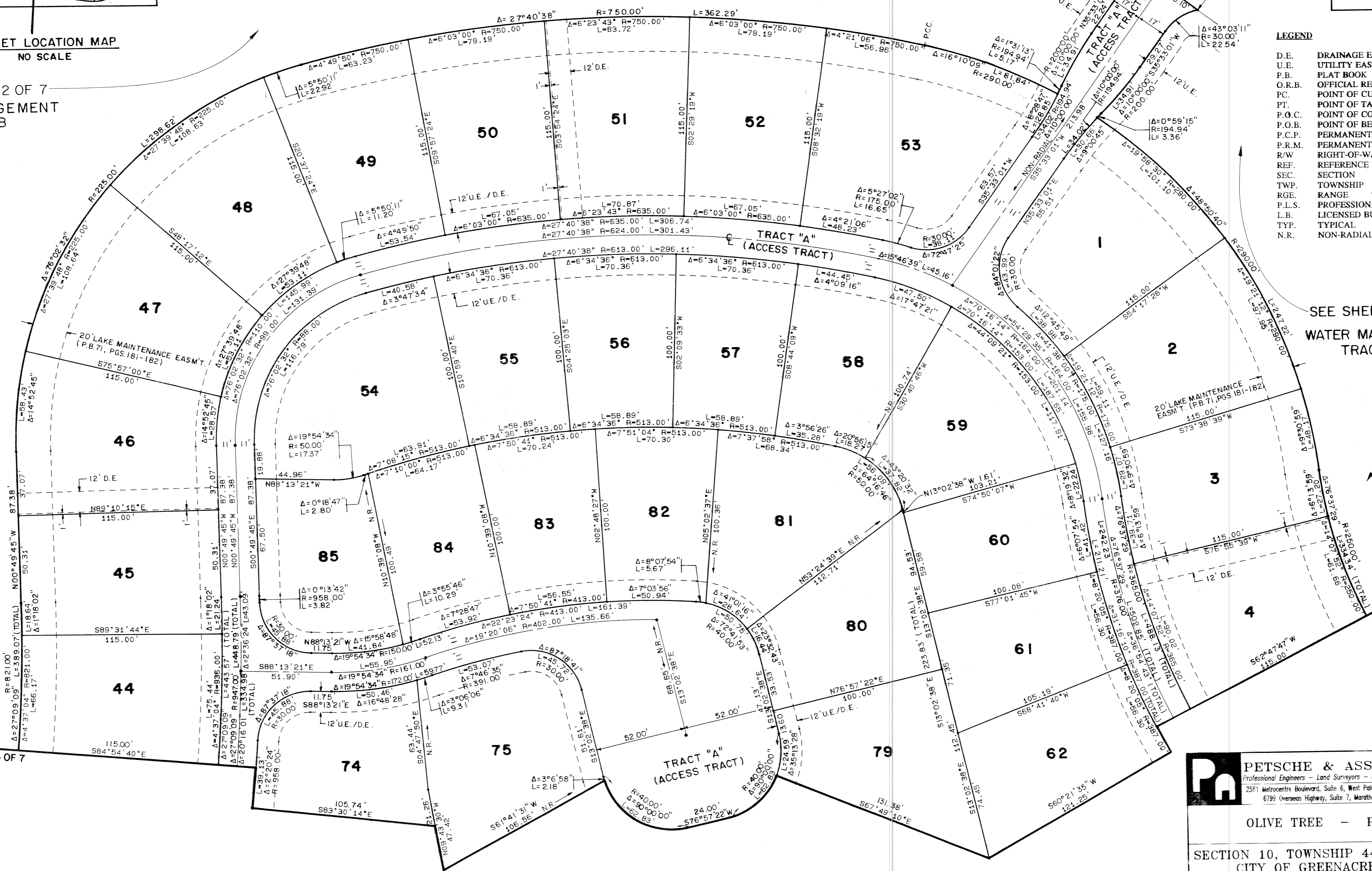
SHEET LOCATION MAP
NO SCALE

SEE SHEET 2 OF 7
WATER MANAGEMENT
TRACT B



TYPICAL DETAIL n.t.s.
4' WALL MAINTENANCE AND ROOF DRAINAGE EASEMENT (SEE DEDICATION No. 7)
* SEE INDIVIDUAL LOTS 65, 70 & 71 FOR NON-TYPICAL 4' WALL MAINT & ROOF DRAINAGE ESMT. LOCATION.

SUBDIVISION # Olive Tree Parcel 6B
BOOK 472 PAGE 3
FLOOD ZONE - FLOOD MAP A
SEAD # -
SE -
PUD NAME - Greenacres
ZIP CODE -



LEGEND

D.E.	DRAINAGE EASEMENT
U.E.	UTILITY EASEMENT
P.B.	PLAT BOOK
O.R.B.	OFFICIAL RECORD BOOK
P.C.	POINT OF CURVATURE
PT.	POINT OF TANGENCY
P.O.C.	POINT OF COMMENCEMENT
P.O.B.	POINT OF BEGINNING
P.C.P.	PERMANENT CONTROL POINT
P.R.M.	PERMANENT REFERENCE MONUMENT
R/W	RIGHT-OF-WAY
REF.	REFERENCE
SEC.	SECTION
TWP.	TOWNSHIP
RGE.	RANGE
P.L.S.	PROFESSIONAL LAND SURVEYOR
L.B.	LICENSED BUSINESS
TYP.	TYPICAL
N.R.	NON-RADIAL

SEE SHEET 2 OF 7
WATER MANAGEMENT
TRACT B

MATCH LINE
SEE SHEET 7 OF 7

PETSCHÉ & ASSOCIATES, INC.
Professional Engineers - Land Surveyors - Development Consultants - Testing Services
2551 Metrocentre Boulevard, Suite 6, West Palm Beach, Florida 33407 (407) 640-3850
6799 Overseas Highway, Suite 7, Marathon, Florida 33050 (305) 743-5788

OLIVE TREE - PARCEL 6B

SECTION 10, TOWNSHIP 44S., RANGE 42E.
CITY OF GREENACRES, FLORIDA

Drawn by:	Date:	SCALE:	JOB NUMBER:	SHEET	OF
M.E.H.	AUGUST 1993	1" = 30'	93-050-2	3	
Designed by:	Checked by:				
	R. HAGLER				