

# OLIVE TREE - PARCEL 6B

A REPLAT OF PARCEL 6B OF  
 OLIVE TREE - PHASE 6A OF THE RIVER BRIDGE P.U.D., (P.B. 71, PGS. 181 - 182)  
 LYING IN SECTION 10, TOWNSHIP 44 SOUTH, RANGE 42 EAST  
 CITY OF GREENACRES, PALM BEACH COUNTY, FLORIDA.  
 JANUARY 1994

SHEET 5 OF 7

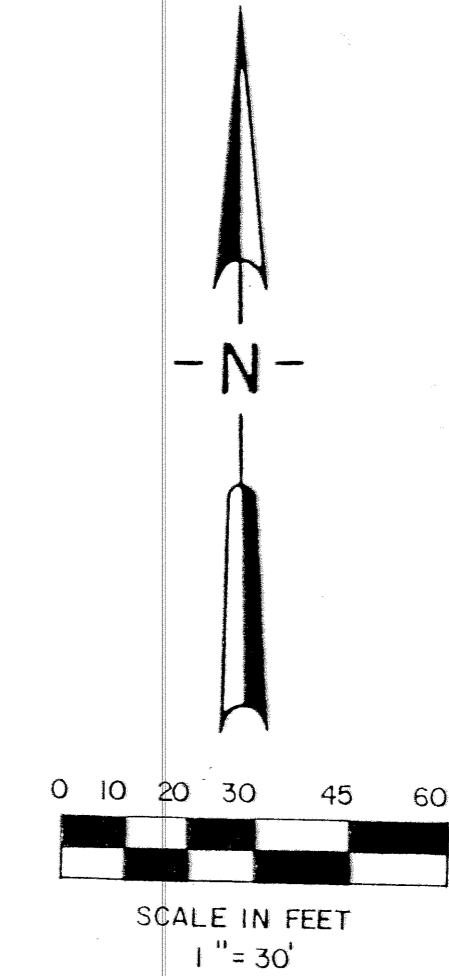
**5**

STATE OF FLORIDA  
 COUNTY OF PALM BEACH

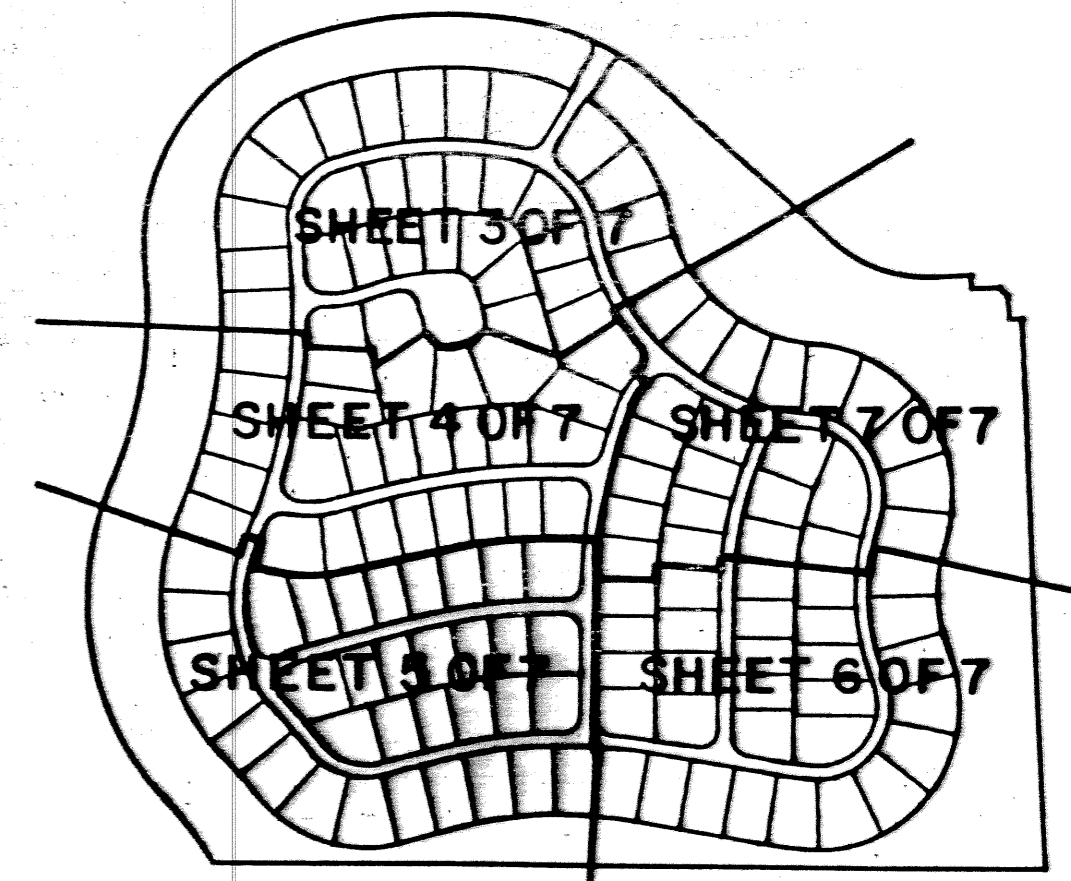
This plat was filed for  
 record at \_\_\_\_\_, this  
 day of \_\_\_\_\_, 1994,  
 and duly recorded in  
 Plat Book No. \_\_\_\_\_ on  
 Pages \_\_\_\_\_ thru \_\_\_\_\_

MILTON T. BAUER  
 Clerk Circuit Court

By: \_\_\_\_\_



SEE SHEET 7 OF 7  
 SEE SHEET 6 OF 7



- LEGEND**
- D.E. DRAINAGE EASEMENT
  - U.E. UTILITY EASEMENT
  - P.B. PLAT BOOK
  - O.R.B. OFFICIAL RECORD BOOK
  - P.C. POINT OF CURVATURE
  - P.T. POINT OF TANGENCY
  - P.O.C. POINT OF COMMENCEMENT
  - P.O.B. POINT OF BEGINNING
  - P.C.P. PERMANENT CONTROL POINT
  - P.R.M. PERMANENT REFERENCE MONUMENT
  - R/W RIGHT-OF-WAY
  - REF. REFERENCE
  - SEC. SECTION
  - TWP. TOWNSHIP
  - RGE. RANGE
  - P.L.S. PROFESSIONAL LAND SURVEYOR
  - L.B. LICENSED BUSINESS
  - TYP. TYPICAL
  - N.R. NON-RADIAL

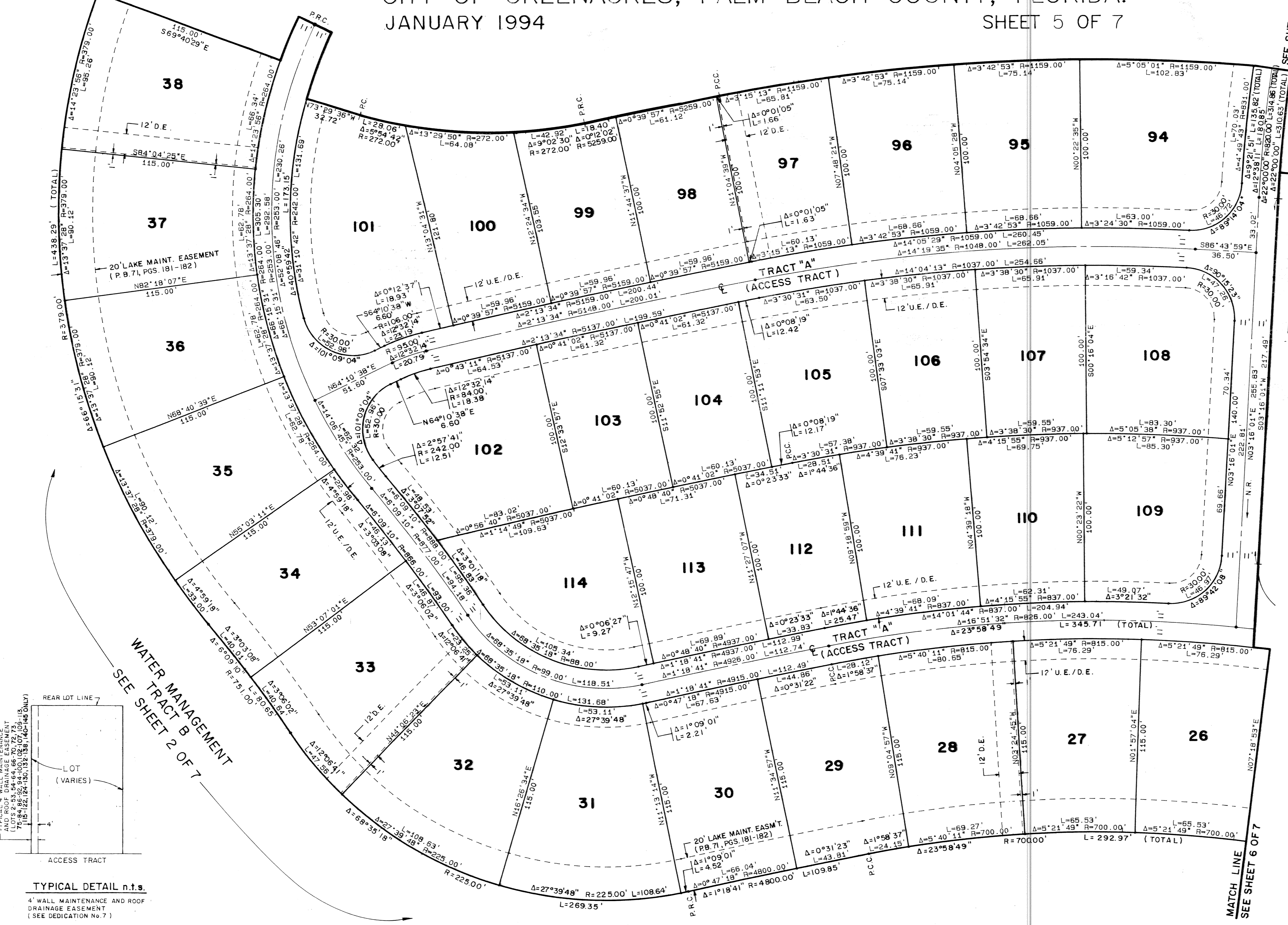
**PETSCH & ASSOCIATES, INC.**  
 Professional Engineers - Land Surveyors - Development Consultants - Testing Services  
 2581 Heliconia Boulevard, Suite 5, West Palm Beach, Florida 33407 (407) 640-3800  
 6799 Overseas Highway, Suite 7, Marathon, Florida 33050 (305) 743-5788

OLIVE TREE - PARCEL 6B

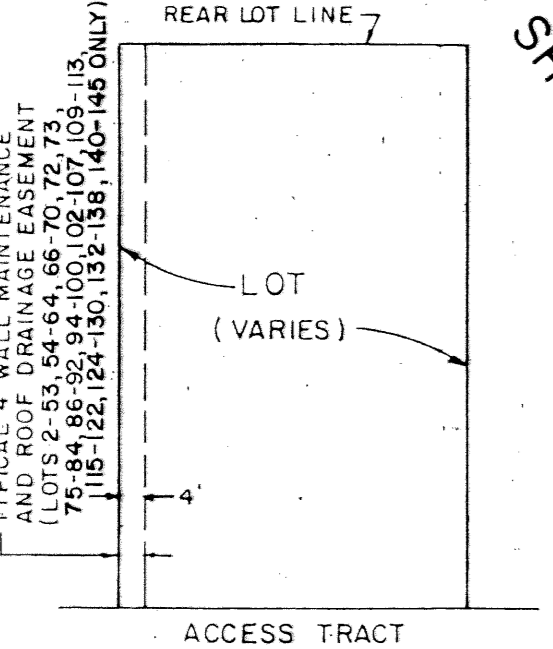
SECTION 10, TOWNSHIP 44S., RANGE 42E.  
 CITY OF GREENACRES, FLORIDA

Drawn by: M.E.H. Date: AUGUST 1993 SCALE: 1" = 30' JOB NUMBER: 93-050-2 SHEET OF 5 OF 7  
 Designed by: R. HAGLER Checked by: R. HAGLER

SEE SHEET 4 OF 7  
 MATCH LINE



SUBDIVISION Olive Tree - 6b.  
 BOOK 72 PAGE 5  
 FLOOD ZONE - FLOOD HAZARD ZONING -  
 QUAD # - ZIP CODE -  
 SE -  
 PUD NAME C/Greenacres.



**TYPICAL DETAIL n.t.s.**  
 4' WALL MAINTENANCE AND ROOF  
 DRAINAGE EASEMENT  
 (SEE DEDICATION No. 7)  
 \* SEE INDIVIDUAL LOTS 65, 70 & 71  
 FOR NON-TYPICAL 4' WALL MAINT. &  
 ROOF DRAINAGE ESMT. LOCATION.