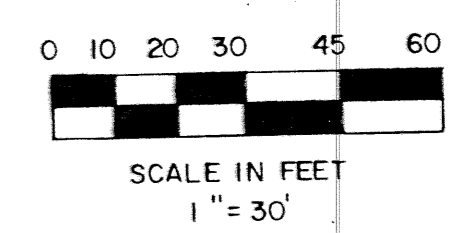
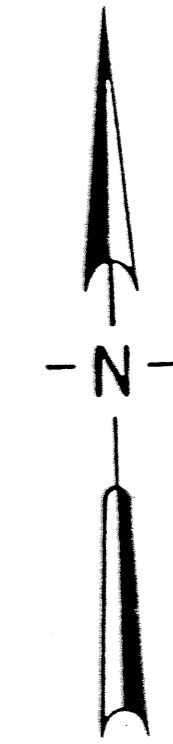


STATE OF FLORIDA
COUNTY OF PALM BEACH

This plat was filed for
record at _____, this
day of _____, 1994,
and duly recorded in
Plat Book No. _____ on
Pages _____ thru _____.

MILTON T. BAUER
Clerk Circuit Court

By: _____

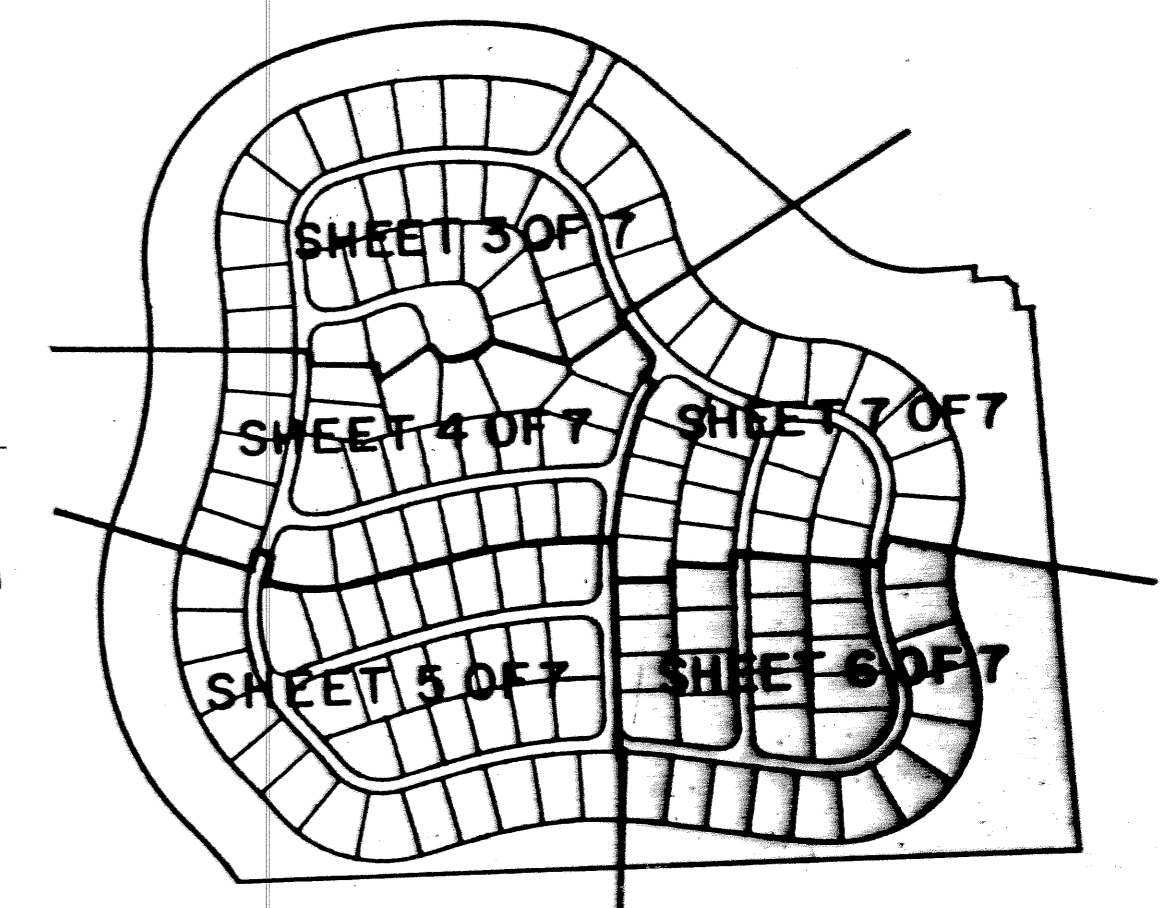
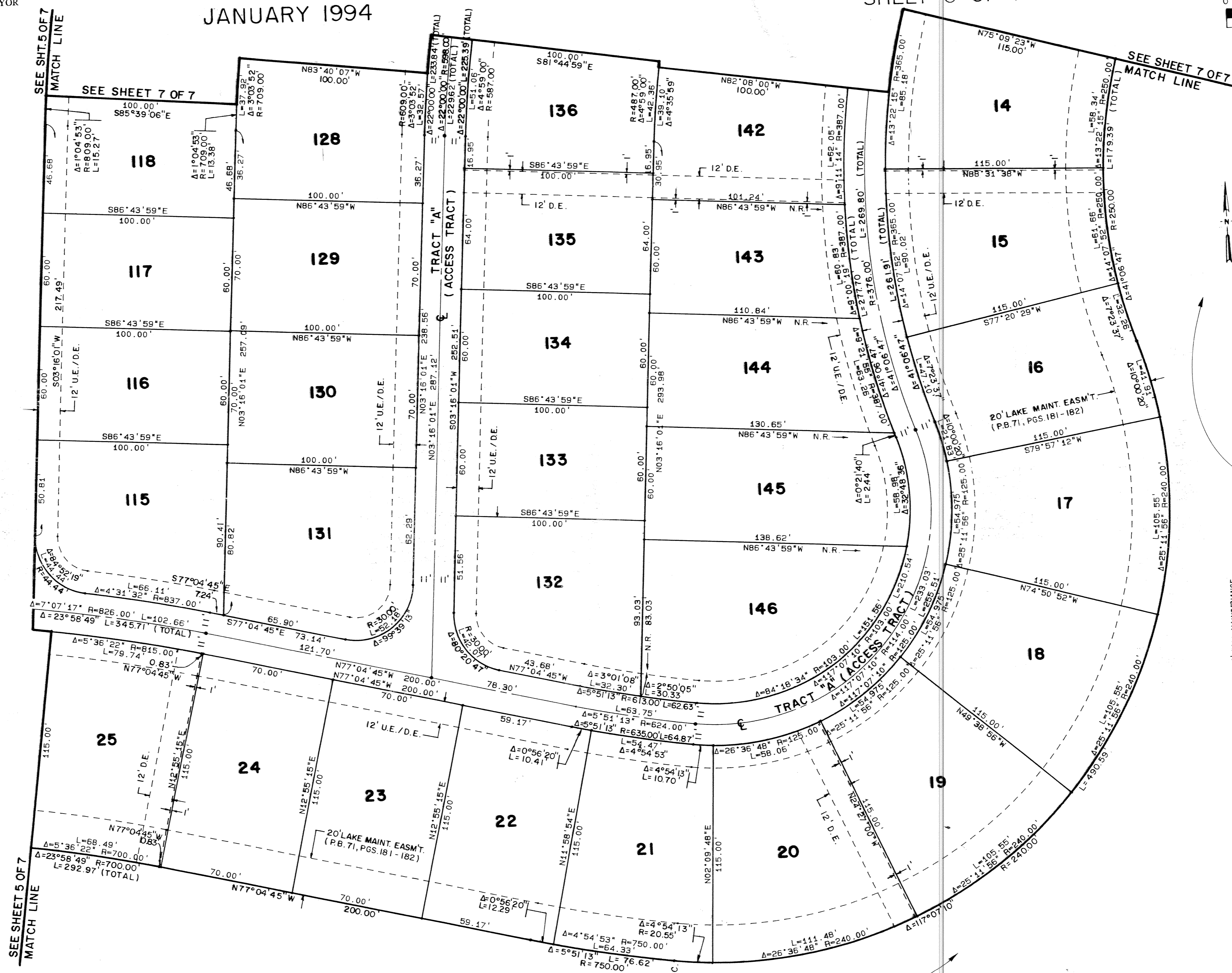


OLIVE TREE - PARCEL 6B

A REPLAT OF PARCEL 6B OF
OLIVE TREE - PHASE 6A OF THE RIVER BRIDGE P.U.D., (P.B. 71, PGS. 181 - 182)
LYING IN SECTION 10, TOWNSHIP 44 SOUTH, RANGE 42 EAST
CITY OF GREENACRES, PALM BEACH COUNTY, FLORIDA.
JANUARY 1994

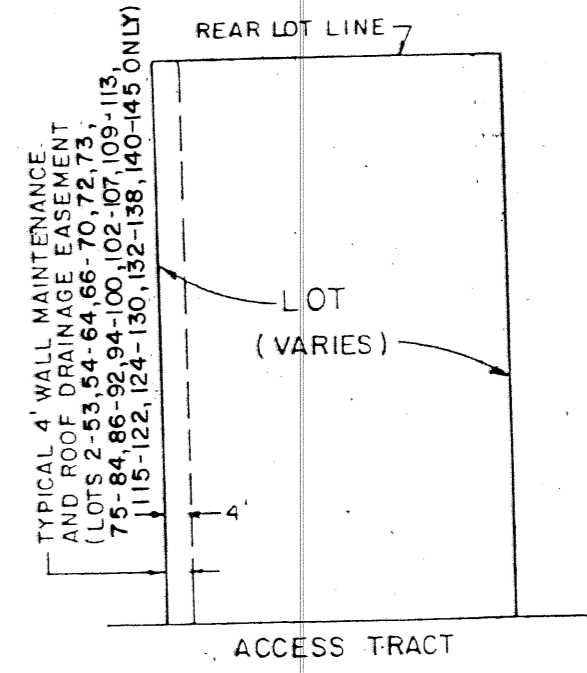
SHEET 6 OF 7

- LEGEND**
- D.E. DRAINAGE EASEMENT
 - U.E. UTILITY EASEMENT
 - P.B. PLAT BOOK
 - O.R.B. OFFICIAL RECORD BOOK
 - PC. POINT OF CURVATURE
 - PT. POINT OF TANGENCY
 - P.O.C. POINT OF COMMENCEMENT
 - P.O.B. POINT OF BEGINNING
 - P.C.P. PERMANENT CONTROL POINT
 - P.R.M. PERMANENT REFERENCE MONUMENT
 - R/W RIGHT-OF-WAY
 - REF. REFERENCE
 - SEC. SECTION
 - TWP. TOWNSHIP
 - RGE. RANGE
 - P.L.S. PROFESSIONAL LAND SURVEYOR
 - L.B. LICENSED BUSINESS
 - TYP. TYPICAL
 - N.R. NON-RADIAL



SHEET LOCATION MAP
NO SCALE

SEE SHEET 2 OF 7
WATER MANAGEMENT
TRACT B



TYPICAL DETAIL n.t.s.

4' WALL MAINTENANCE AND ROOF DRAINAGE EASEMENT (SEE DEDICATION No. 7)

* SEE INDIVIDUAL LOTS 65, 70 & 71 FOR NON-TYPICAL 4' WALL MAINT & ROOF DRAINAGE ESM'T. LOCATION.

SUBDIVISION Olive Tree - 6B
BOOK 72 PAGE 6
FLOOD ZONE - FLOOD MAP # -
GUAD # - ZONING -
SE - ZIP CODE -
PUD NAME Greenacres

PETSCH & ASSOCIATES, INC.
Professional Engineers - Land Surveyors - Development Consultants - Testing Services
2581 Metrocentre Boulevard, Suite 6, West Palm Beach, Florida 33407 (407) 640-3800
6799 Overseas Highway, Suite 7, Marathon, Florida 33050 (305) 743-5788

OLIVE TREE - PARCEL 6B

SECTION 10, TOWNSHIP 44S., RANGE 42E.
CITY OF GREENACRES, FLORIDA

Drawn by: M.E.H.	Date: AUGUST 1993	SCALE: 1" = 30'	JOB NUMBER: 93-050-2	SHEET OF 6 OF 7
Designed by:	Checked by: R. HAGLER			

SEE SHEET 2 OF 7
WATER MANAGEMENT
TRACT B