

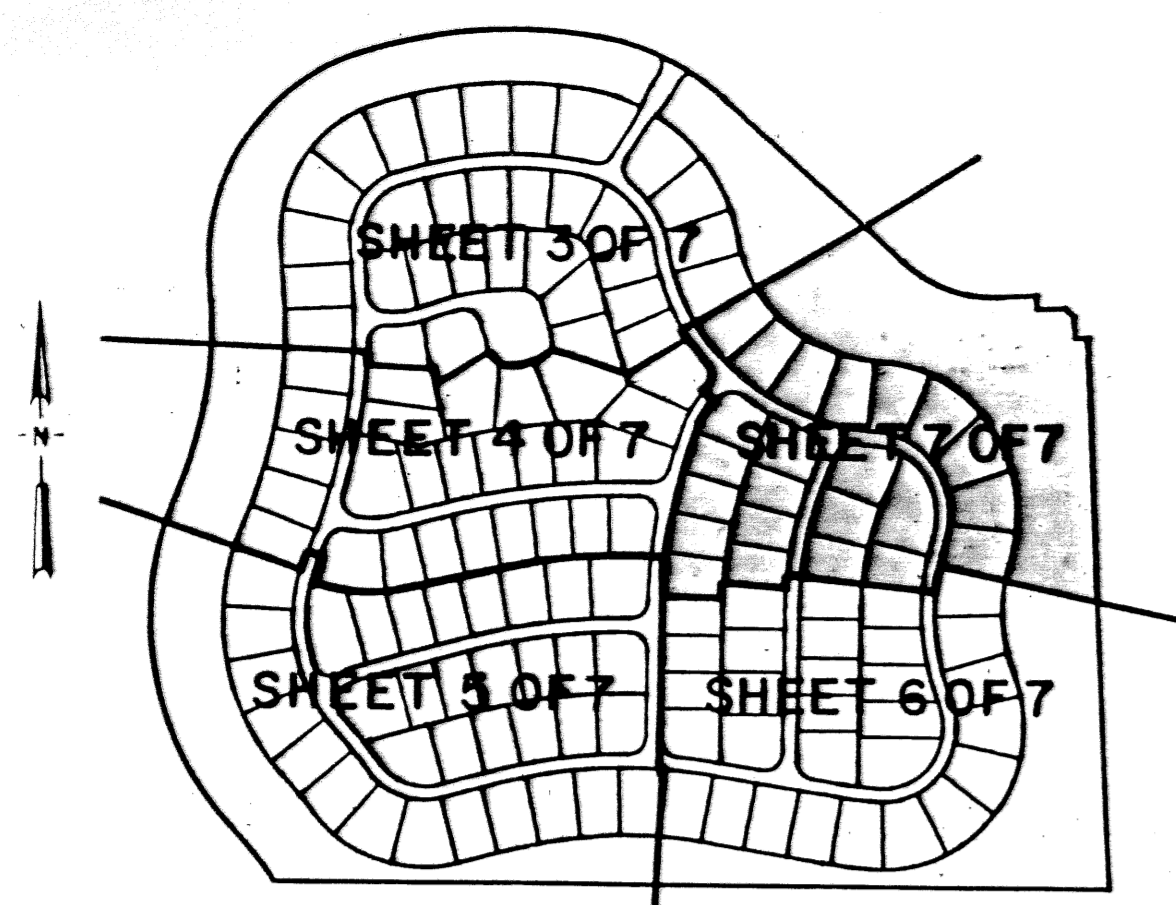
STATE OF FLORIDA
COUNTY OF PALM BEACH

This plat was filed for
record at _____, this
day of _____, 1994,
and duly recorded in
Plat Book No. _____ on
Pages _____ thru _____.

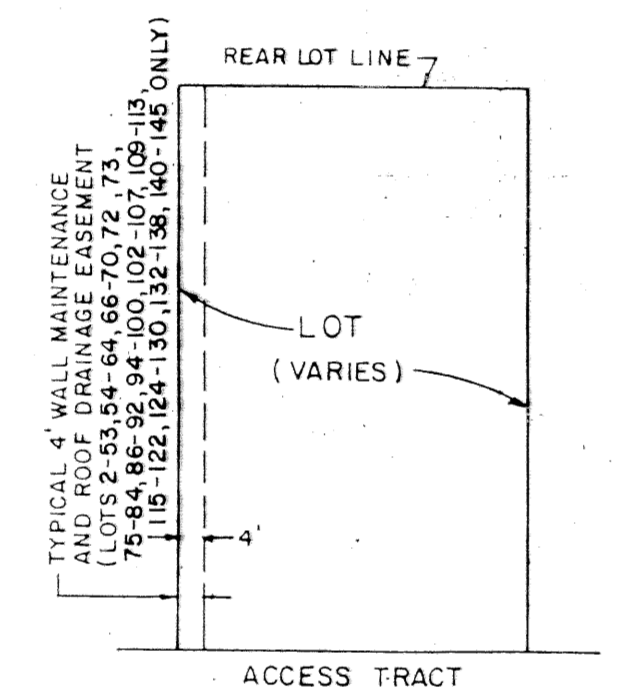
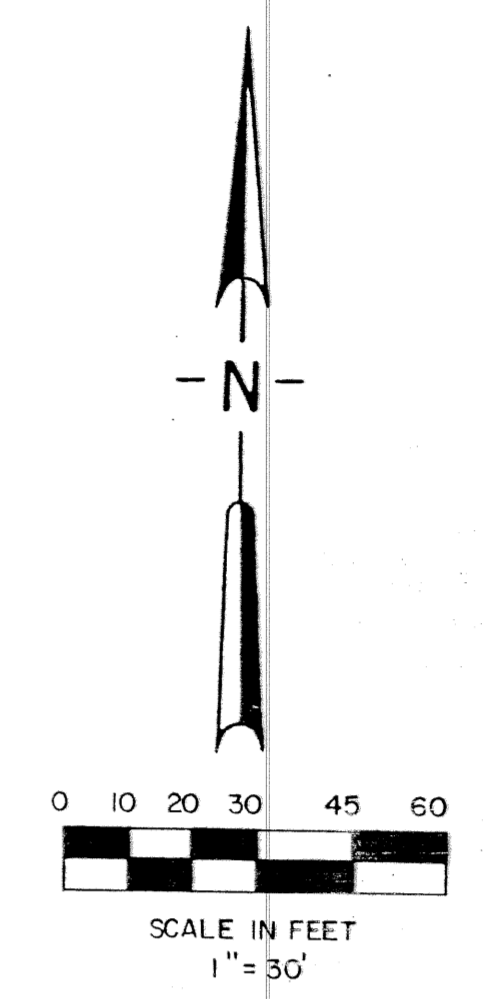
MILTON T. BAUER
Clerk Circuit Court
By: _____

OLIVE TREE - PARCEL 6B

A REPLAT OF PARCEL 6B OF
OLIVE TREE - PHASE 6A OF THE RIVER BRIDGE P.U.D., (P.B. 71, PGS. 181 - 182)
LYING IN SECTION 10, TOWNSHIP 44 SOUTH, RANGE 42 EAST
CITY OF GREENACRES, PALM BEACH COUNTY, FLORIDA.
JANUARY 1994
SHEET 7 OF 7

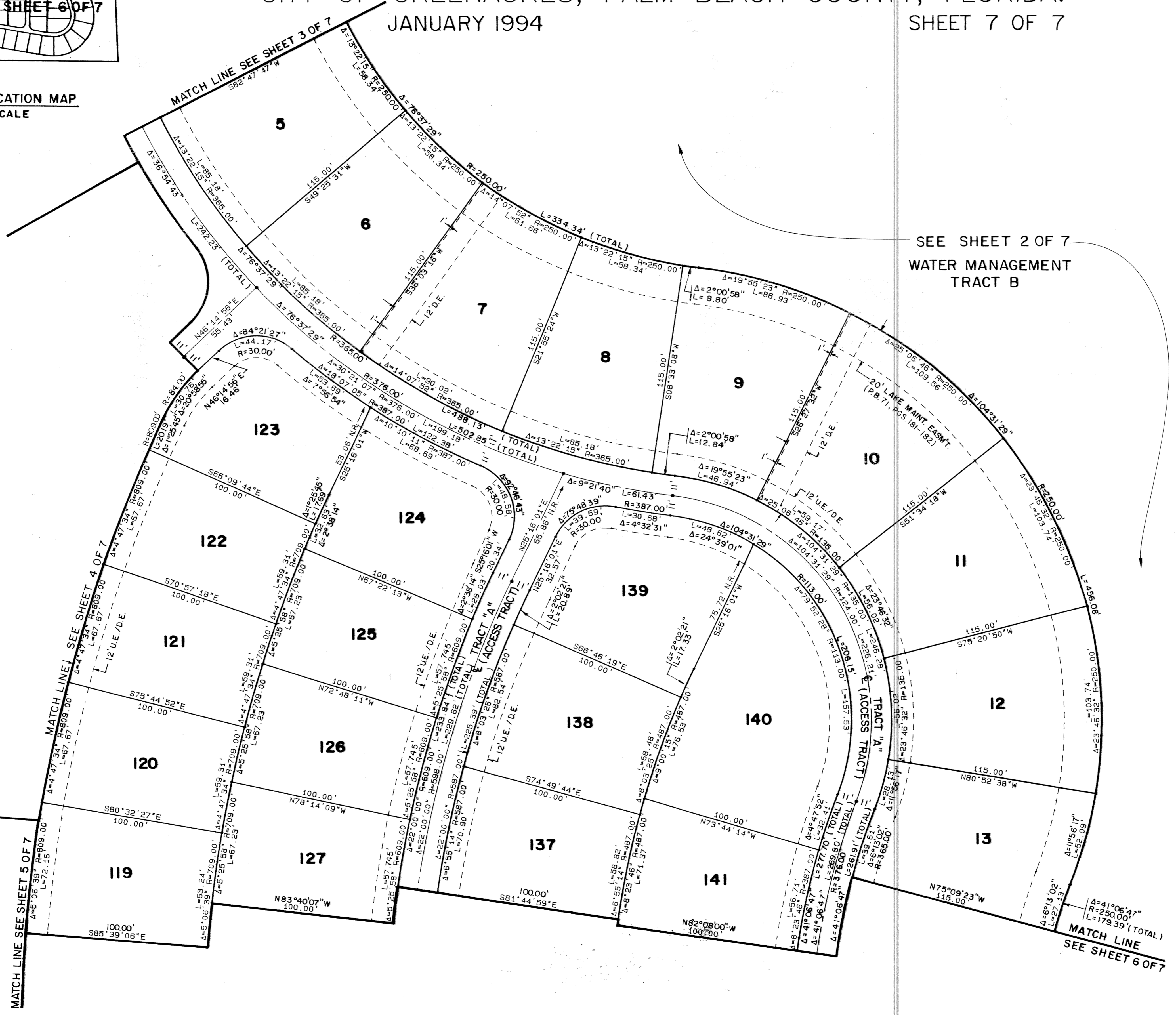


SHEET LOCATION MAP
NO SCALE



TYPICAL DETAIL n.t.s.
4' WALL MAINTENANCE AND ROOF DRAINAGE EASEMENT (SEE DEDICATION No. 7)
* SEE INDIVIDUAL LOTS 65, 70 & 71 FOR NON-TYPICAL 4' WALL MAINT. & ROOF DRAINAGE ESMT. LOCATION.

SUBDIVISION * Olive Tree - 6B
BOOK T-2 PAGE 7
FLOOD ZONE - FLOOD MAP *
QUAD * - ZONING -
SE - ZIP CODE -
PUD NAME C Greenacres



SEE SHEET 2 OF 7
WATER MANAGEMENT
TRACT B

LEGEND

- D.E. DRAINAGE EASEMENT
- U.E. UTILITY EASEMENT
- P.B. PLAT BOOK
- O.R.B. OFFICIAL RECORD BOOK
- P.C. POINT OF CURVATURE
- PT. POINT OF TANGENCY
- P.O.C. POINT OF COMMENCEMENT
- P.O.B. POINT OF BEGINNING
- P.C.P. PERMANENT CONTROL POINT
- P.R.M. PERMANENT REFERENCE MONUMENT
- R/W RIGHT-OF-WAY
- REF. REFERENCE
- SEC. SECTION
- TWP. TOWNSHIP
- RGE. RANGE
- P.L.S. PROFESSIONAL LAND SURVEYOR
- L.B. LICENSED BUSINESS
- TYP. TYPICAL
- N.R. NON-RADIAL

PETSCHÉ & ASSOCIATES, INC.
Professional Engineers - Land Surveyors - Development Consultants - Testing Services
2581 Metrocentre Boulevard, Suite 6, West Palm Beach, Florida 33407 (407) 640-3800
6799 Overseas Highway, Suite 7, Marathon, Florida 33050 (305) 743-5788

OLIVE TREE - PARCEL 6B

SECTION 10, TOWNSHIP 44S., RANGE 42E.
CITY OF GREENACRES, FLORIDA

Drawn by: M.E.H.	Date: AUGUST 1993	SCALE: 1" = 30'	JOB NUMBER: 93-050-2	SHEET OF 7 OF 7
Designed by:	Checked by: R. HAGLER			