

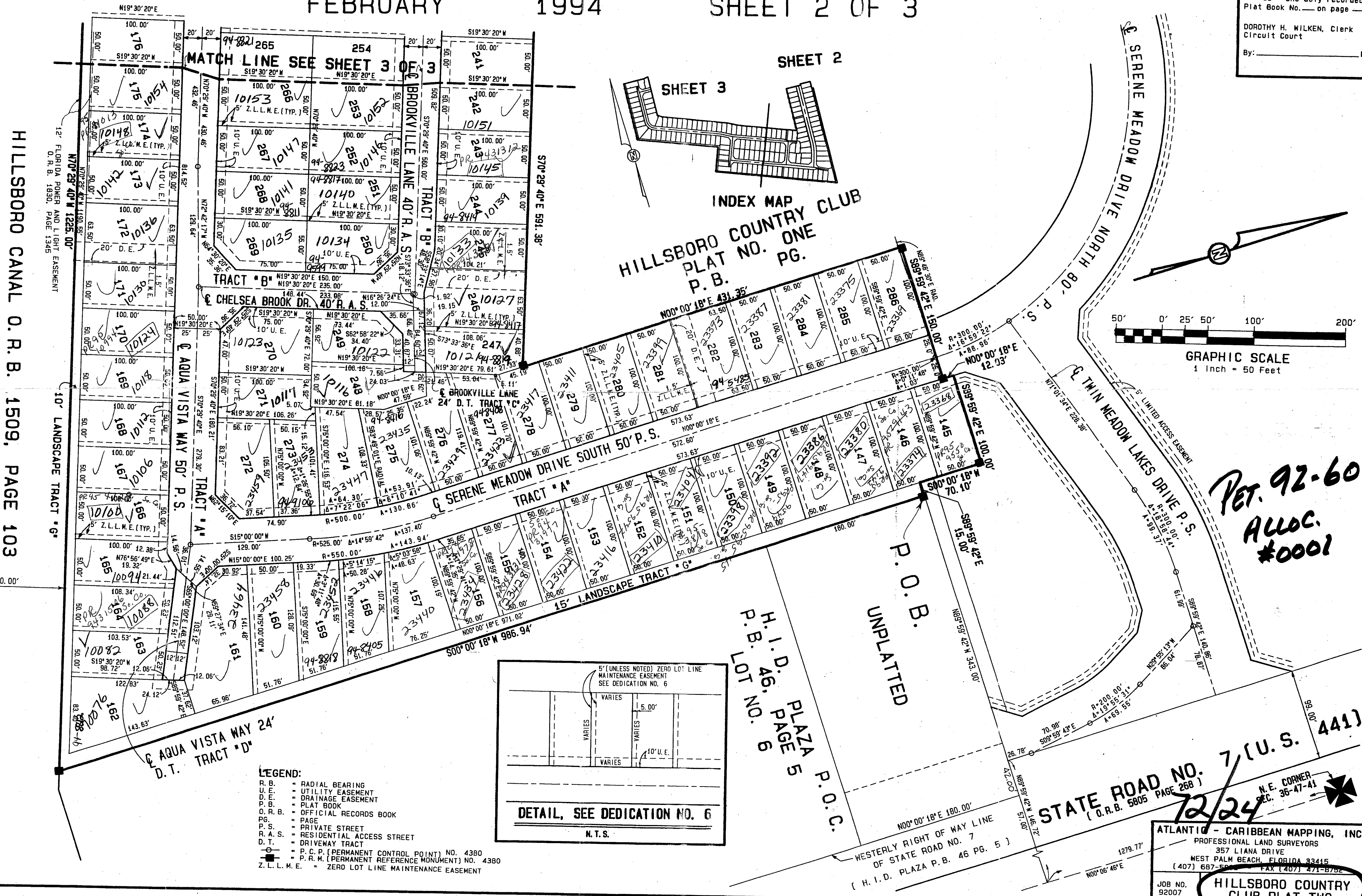
# HILLSBORO COUNTRY CLUB PLAT TWO

A PLANNED UNIT DEVELOPMENT  
 SITUATE IN SECTION 36, TOWNSHIP 47 SOUTH, RANGE 41 EAST,  
 PALM BEACH COUNTY, STATE OF FLORIDA  
 FEBRUARY 1994 SHEET 2 OF 3

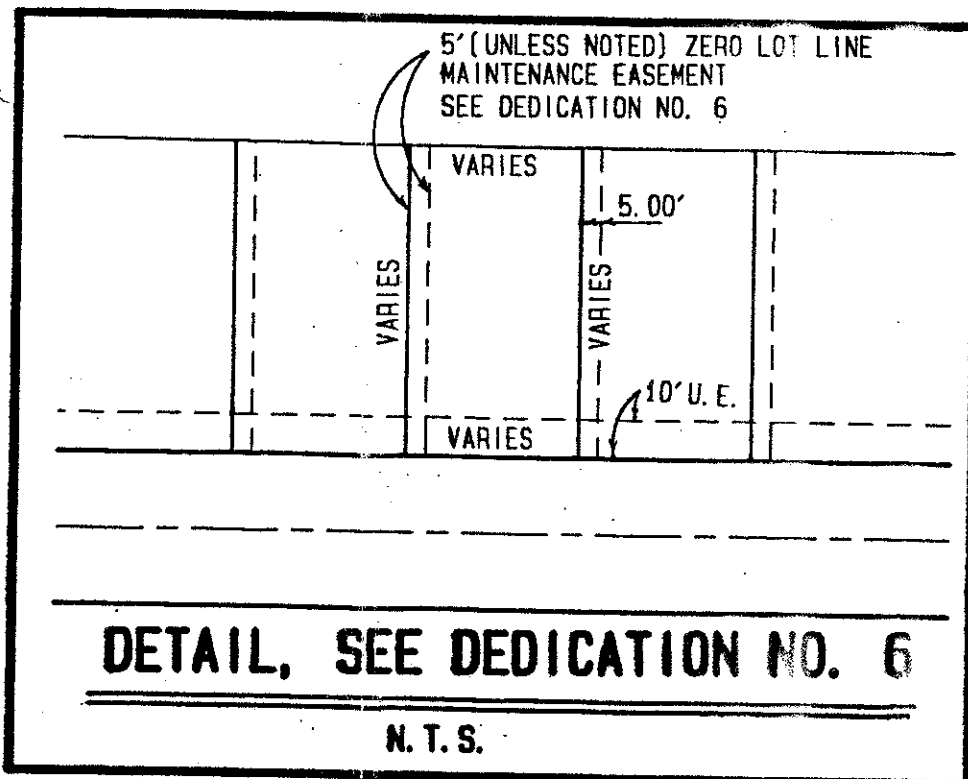
619-002

24

STATE OF FLORIDA SS  
 COUNTY OF PALM BEACH  
 This plat filed for record at  
 this \_\_\_\_\_ day of \_\_\_\_\_  
 19 \_\_\_\_\_ and duly recorded in  
 Plat Book No. \_\_\_\_\_ on page \_\_\_\_\_  
 DOROTHY H. WILKEN, Clerk  
 Circuit Court  
 By: \_\_\_\_\_ D. C.



HILLSBORO CANAL O.R.B. 1509, PAGE 103  
 PALM BEACH COUNTY  
 BROWARD COUNTY



PET. 92-60  
 ALLOC.  
 #0001

STATE ROAD NO. 7 (U.S. 441)  
 (O.R.B. 5805 PAGE 268)  
 12/24  
 N.E. CORNER SEC. 36-47-41  
 ATLANTIC - CARIBBEAN MAPPING, INC.  
 PROFESSIONAL LAND SURVEYORS  
 357 LIANA DRIVE  
 WEST PALM BEACH, FLORIDA 33415  
 (407) 687-5000 FAX (407) 471-8750  
 HILLSBORO COUNTRY CLUB PLAT TWO  
 JOB NO. 92007

SUBDIVISION \* Hillsboro CC P.L.Z.  
 BOOK 72 PAGE 23  
 FLOOD ZONE ZONING PDD  
 QUAD # 69  
 SE 92-60 ZIP CODE  
 PUD NAME Hillsboro C.C.

T4Z 780

0619-002