

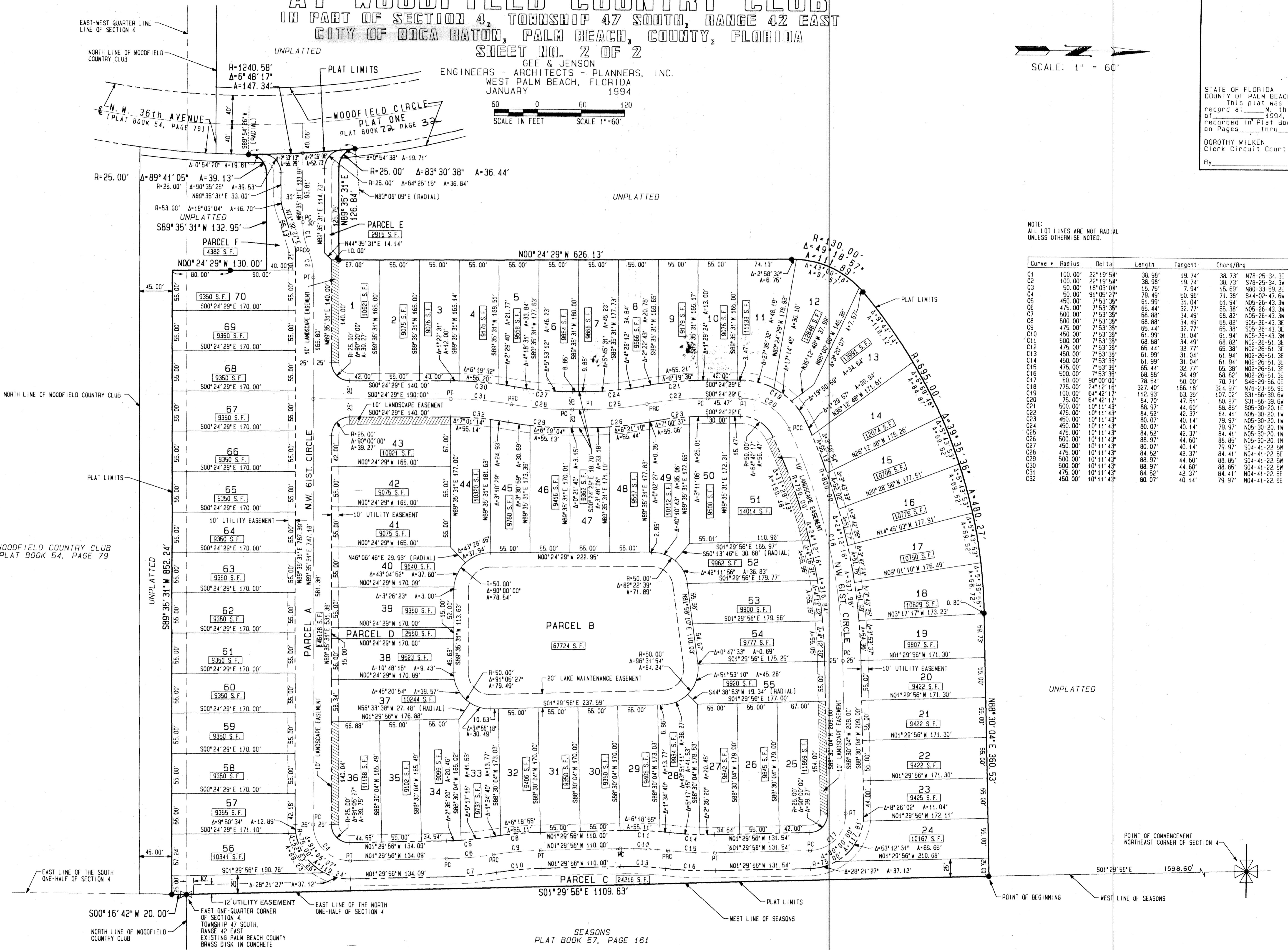
# CLUBSIDE AT WOODFIELD COUNTRY CLUB

IN PART OF SECTION 4, TOWNSHIP 47 SOUTH, RANGE 42 EAST  
CITY OF BOCA RATON, PALM BEACH COUNTY, FLORIDA  
SHEET NO. 2 OF 2

GEE & JENSON  
ENGINEERS - ARCHITECTS - PLANNERS, INC.  
WEST PALM BEACH, FLORIDA  
JANUARY 1994

SCALE: 1" = 60'

STATE OF FLORIDA  
COUNTY OF PALM BEACH  
This plat was filed for  
record at \_\_\_\_\_ M. This day  
of \_\_\_\_\_ 1994, and duly  
recorded in Plat Book No. \_\_\_\_\_  
on Pages \_\_\_\_\_ thru \_\_\_\_\_  
DOROTHY WILKEN  
Clerk Circuit Court  
By \_\_\_\_\_ D.C.



NOTE:  
ALL LOT LINES ARE NOT RADIAL  
UNLESS OTHERWISE NOTED.

Curve	Radius	Delta	Length	Tangent	Chord/Brg
C1	100.00'	22°19'54"	38.98'	19.74'	38.73' N78-25-34.3E
C2	100.00'	22°19'54"	38.98'	19.74'	38.73' S78-25-34.3W
C3	50.00'	18°03'04"	15.75'	7.94'	15.69' N80-33-59.2E
C4	50.00'	18°03'04"	15.75'	7.94'	15.69' S44-02-47.6W
C5	450.00'	7°53'35"	61.99'	31.04'	61.94' N05-26-43.3W
C6	475.00'	7°53'35"	65.44'	32.77'	65.38' N05-26-43.3W
C7	500.00'	7°53'35"	68.88'	34.49'	68.82' N05-26-43.3W
C8	500.00'	7°53'35"	68.88'	34.49'	68.82' S05-26-43.3E
C9	475.00'	7°53'35"	65.44'	32.77'	65.38' S05-26-43.3E
C10	450.00'	7°53'35"	61.99'	31.04'	61.94' N05-26-43.3W
C11	500.00'	7°53'35"	65.44'	32.77'	65.38' N05-26-43.3W
C12	475.00'	7°53'35"	61.99'	31.04'	61.94' N02-26-51.3E
C13	450.00'	7°53'35"	58.44'	29.77'	58.38' N02-26-51.3E
C14	450.00'	7°53'35"	61.99'	31.04'	61.94' N02-26-51.3E
C15	475.00'	7°53'35"	65.44'	32.77'	65.38' N02-26-51.3E
C16	500.00'	7°53'35"	68.88'	34.49'	68.82' N02-26-51.3E
C17	500.00'	90°00'00"	78.54'	50.00'	70.71' S46-29-56.0E
C18	775.00'	24°12'16"	327.40'	166.18'	324.97' N76-23-55.9E
C19	100.00'	64°42'17"	112.93'	63.35'	107.02' S31-56-39.6W
C20	75.00'	64°42'17"	84.70'	47.51'	80.27' S31-56-39.6W
C21	500.00'	7°53'35"	68.88'	34.49'	68.82' S05-30-20.1W
C22	475.00'	10°11'43"	84.52'	42.37'	84.41' N05-30-20.1W
C23	450.00'	10°11'43"	80.07'	40.14'	79.97' N05-30-20.1W
C24	450.00'	10°11'43"	80.07'	40.14'	79.97' N05-30-20.1W
C25	475.00'	10°11'43"	84.52'	42.37'	84.41' N05-30-20.1W
C26	500.00'	10°11'43"	88.97'	44.60'	88.85' N05-30-20.1W
C27	450.00'	10°11'43"	80.07'	40.14'	79.97' N04-41-22.5W
C28	475.00'	10°11'43"	84.52'	42.37'	84.41' N04-41-22.5W
C29	500.00'	10°11'43"	88.97'	44.60'	88.85' S04-41-22.5W
C30	500.00'	10°11'43"	88.97'	44.60'	88.85' S04-41-22.5W
C31	475.00'	10°11'43"	84.52'	42.37'	84.41' N04-41-22.5E
C32	450.00'	10°11'43"	80.07'	40.14'	79.97' N04-41-22.5E

TAZ 604  
SUBDIVISION - Clubside  
BOOK 72 PAGE 37  
FLOOD ZONE - FLOOD HAZARD  
SE ZONING  
ZIP CODE  
OWNER NAME c/Boca Woodfield

COMPUTED D. BACHOR  
DRAWN D. BACHOR  
CHECKED \_\_\_\_\_  
APPROVED \_\_\_\_\_  
JOB NO. 93-330

