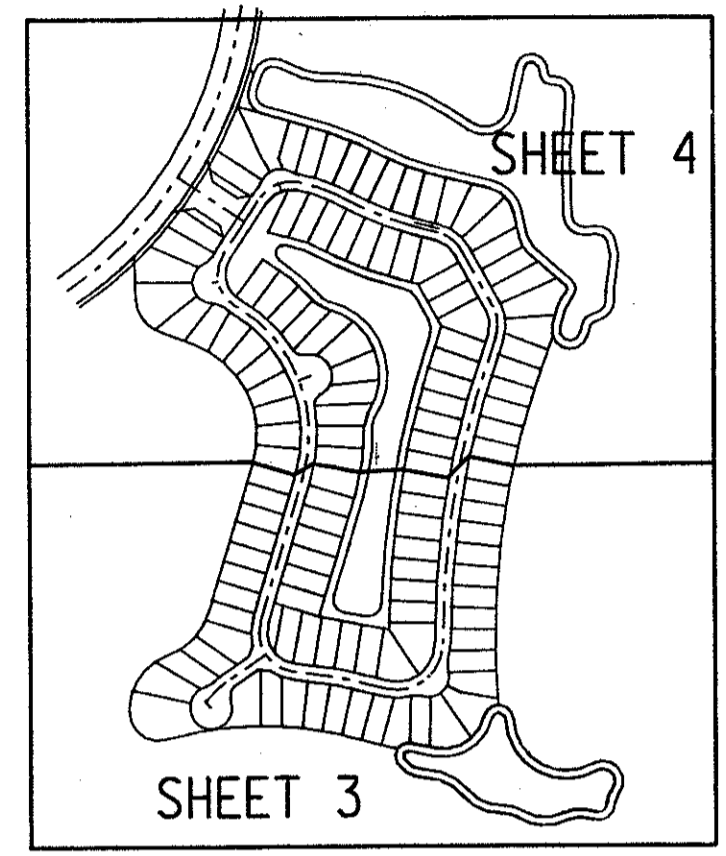
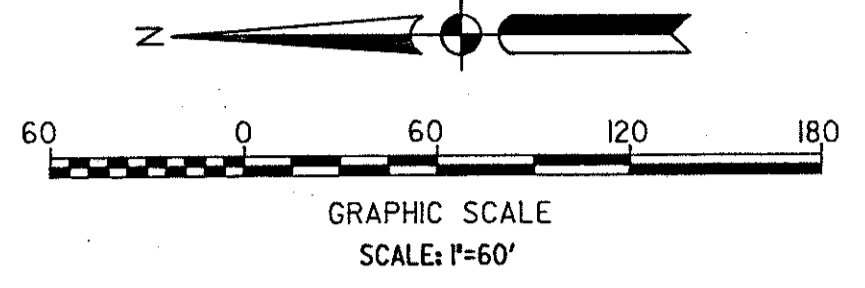


WINSTON TRAILS PARCEL FOUR

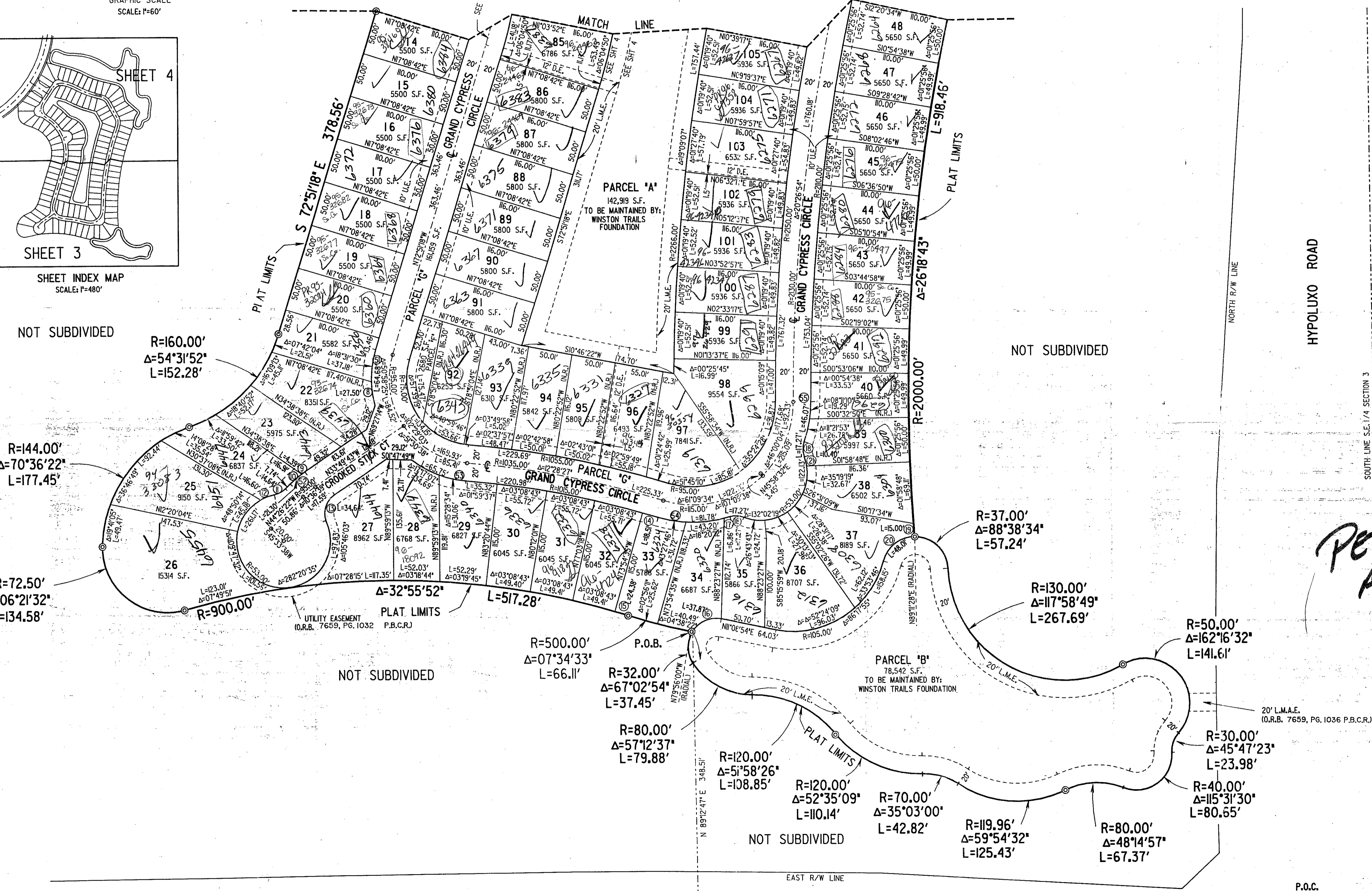
PART OF A P.U.D.
LYING IN SECTION 3, TOWNSHIP 45 SOUTH, RANGE 42 EAST,
PALM BEACH COUNTY, FLORIDA.

PREPARED BY:
JON P. WEBER IN THE OFFICES OF
KEITH AND SCHNARS, P.A.
ENGINEERS - PLANNERS - SURVEYORS
6500 NORTH ANDREWS AVENUE
FORT LAUDERDALE, FLORIDA 33309
(305) 776-1616
MAY, 1992
DWG NO. P2997U-4160UPL2.DGN



SEE SHEET 4 OF 4

STATE OF FLORIDA
COUNTY OF PALM BEACH
THIS PLAT WAS FILED FOR RECORD
AT _____ M, THIS _____ DAY
OF _____ 199____, AND DULY
RECORDED IN PLAT BOOK NO. _____
ON PAGES _____ THRU _____
DOROTHY H. WILKEN
CLERK OF THE CIRCUIT COURT
BY: _____ D.C.



CURVE TABLE

Curve No.	R	Δ	L
8	115.00'	Δ=13°41'57"	L=27.50'
9	115.00'	Δ=02°11'19"	L=4.39'
10	115.00'	Δ=08°25'20"	L=16.91'
11	25.00'	Δ=33°33'26"	L=14.64'
12	53.00'	Δ=17°56'46"	L=16.60'
13	25.00'	Δ=79°23'48"	L=34.64'
14	1015.00'	Δ=01°02'41"	L=18.51'
15	900.00'	Δ=01°33'08"	L=24.38'
16	32.00'	Δ=67°48'11"	L=37.87'
17	135.00'	Δ=02°54'35"	L=6.86'
18	25.00'	Δ=39°34'09"	L=17.27'
19	2000.00'	Δ=00°25'47"	L=15.00'
20	37.00'	Δ=74°20'27"	L=48.01'
21	53.00'	Δ=11°14'27"	L=10.40'
51	115.00'	Δ=32°13'27"	L=64.68'
52	115.00'	Δ=10°36'39"	L=21.30'
53	115.00'	Δ=32°45'41"	L=65.75'
54	135.00'	Δ=34°42'34"	L=81.78'
55	135.00'	Δ=19°33'03"	L=46.07'
56	75.00'	Δ=66°25'16"	L=86.95'
57	115.00'	Δ=14°48'28"	L=29.72'

LEGEND

- D.B. DEED BOOK
- D.E. DRAINAGE EASEMENT
- FD. FOUND
- K/S. KEITH AND SCHNARS
- L. ARC LENGTH
- L.M.A.E. LAKE MAINTENANCE ACCESS EASEMENT
- L.M.E. LAKE MAINTENANCE EASEMENT
- N.T.S. NOT TO SCALE
- N.R. NOT RADIAL
- O.R.B. OFFICIAL RECORD BOOK
- P.B. PLAT BOOK
- P.B.C.R. PALM BEACH COUNTY RECORDS
- P.C.P. PERMANENT CONTROL POINT
- PG. PAGE
- P.O.B. POINT OF BEGINNING
- P.O.C. POINT OF COMMENCEMENT
- P.L.S. PROFESSIONAL LAND SURVEYOR
- R. RADIUS
- R/W. RIGHT-OF-WAY
- RGE. RANGE
- SEC. SECTION
- S.F. SQUARE FEET
- TWP. TOWNSHIP
- U.E. UTILITY EASEMENT
- Δ. CENTRAL ANGLE

PET. 87-112
ALLOC. #0001

NOTICE
THERE MAY BE ADDITIONAL RESTRICTIONS
THAT ARE NOT RECORDED ON THIS PLAT
THAT MAY BE FOUND IN THE PUBLIC
RECORDS OF THIS COUNTY

0587-005

WINSTON TRAILS PARCEL FOUR 72/46

WINSTON TRAILS PARCEL FOUR
DRAWN BY: JON P. WEBER
CHECKED BY: JON P. WEBER
DATE: MAY 1992