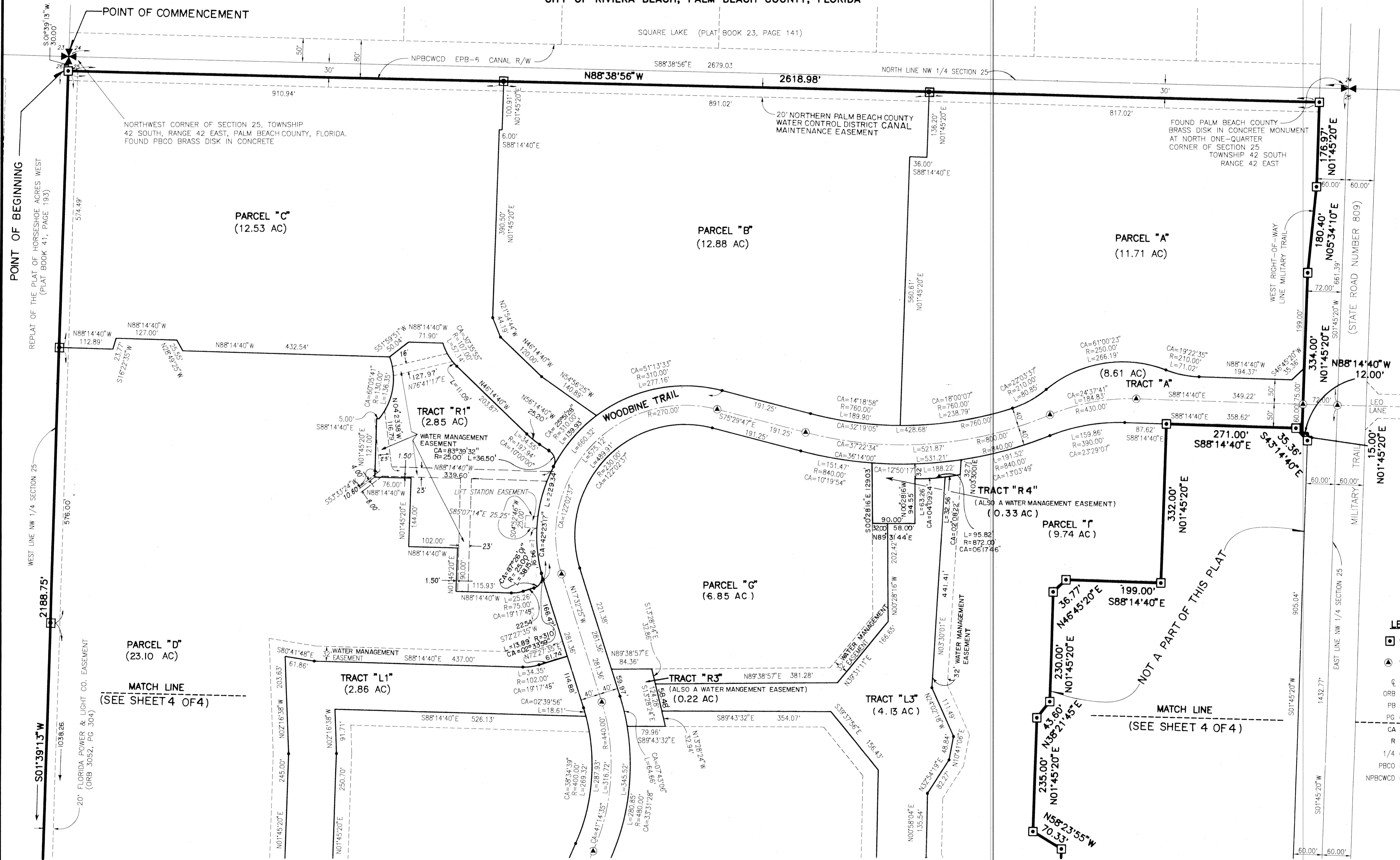


WOODBINE

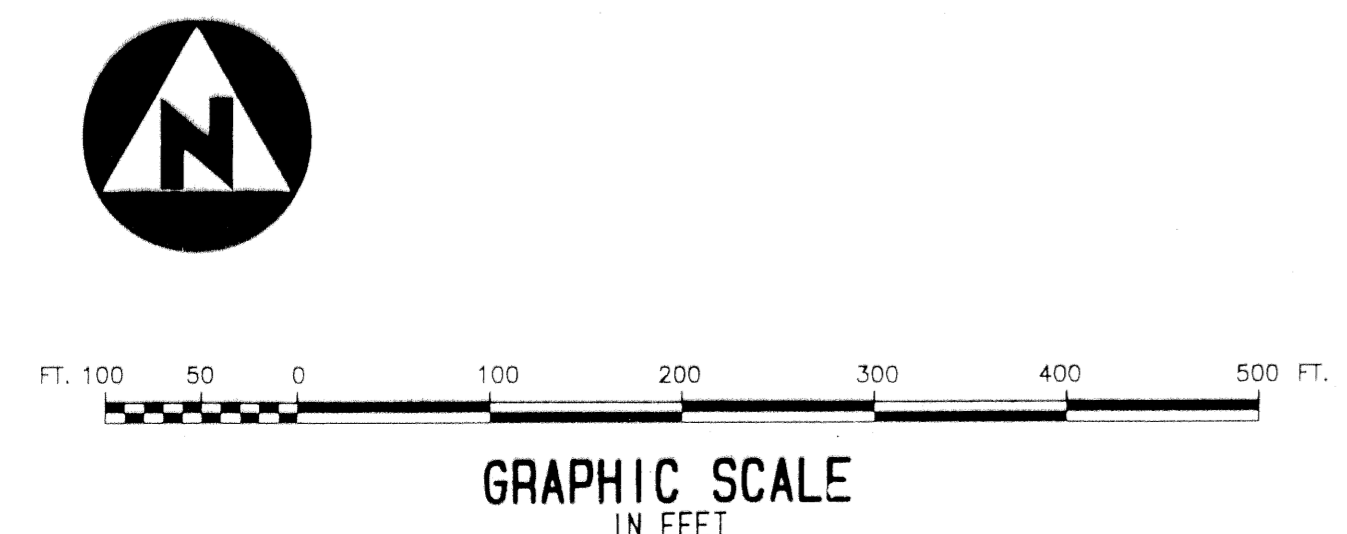
(WOODBINE RESIDENTIAL PLANNED UNIT DEVELOPMENT)
LYING IN THE NORTHWEST ONE-QUARTER OF SECTION 25, TOWNSHIP 42 SOUTH, RANGE 42 EAST,
CITY OF RIVIERA BEACH, PALM BEACH COUNTY, FLORIDA



- LEGEND:**
- = SET PERMANENT REFERENCE MONUMENT (P.R.M.) #2424
 - ▲ = SET PERMANENT CONTROL POINT (P.C.P.) #2424
 - ⊕ = CENTERLINE
 - ORB = OFFICIAL RECORDS BOOK
 - PB = PLAT BOOK
 - PG = PAGE
 - CA = CENTRAL ANGLE
 - R = RADIUS
 - 1/4 = ONE-QUARTER
 - PBCO = PALM BEACH COUNTY
 - NPBCWCD = NORTHERN PALM BEACH COUNTY WATER CONTROL DISTRICT

NOT A PART OF THIS PLAT
MATCH LINE (SEE SHEET 4 OF 4)

(SEE SHEET 3 OF 3)



SUBDIVISION * Woodbine 48
BOOK 72 PAGE 48
FLOOD ZONE FLOOD MAP # -
QUAD # ZONING -
ZIP CODE -
CITY NAME C/RIVIERA BEACH

This instrument was prepared by Wm. R. Van Campen, R.L.S., in and for the offices of Bench Mark Land Surveying & Mapping, Inc., 4152 West Blue Heron Boulevard, Suite 121, Riviera Beach, Florida

BENCH MARK
Land Surveying and Mapping, Inc.
4152 West Blue Heron Blvd., Suite 121, Riviera Beach, FL 33404
Fax (407) 844-9659 Phone (407) 848-2102

RECORD PLAT		WOODBINE	
DWN	D/C	FB	DATE 8-4-93
OKD	FILE P11WPLDWG	SCALE 1"=100'	WO.# P11
		SHEET 3 OF 4	