

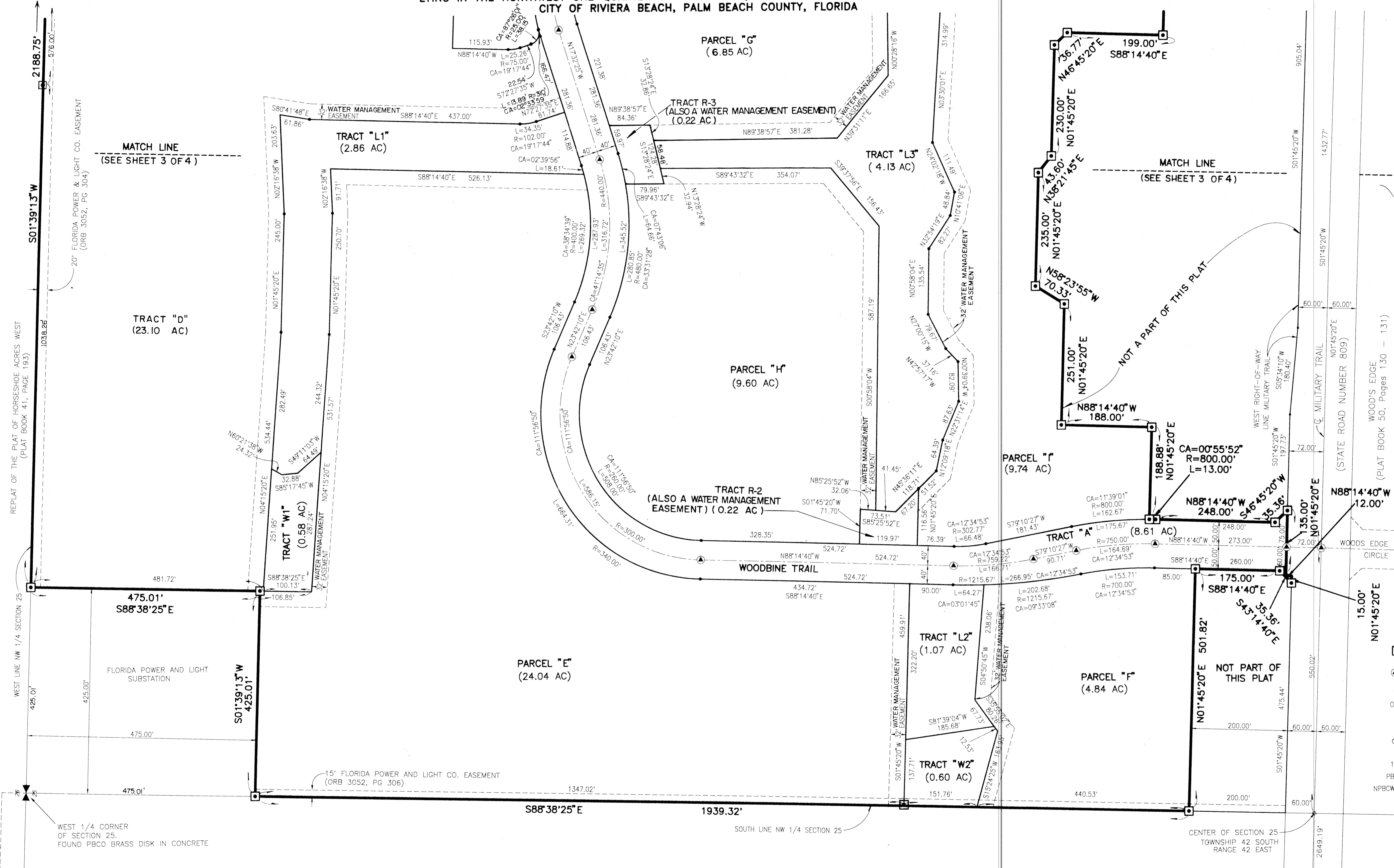
MARCH 1994

WOODBINE

SHEET 4 of 4

49

(WOODBINE RESIDENTIAL PLANNED UNIT DEVELOPMENT)
LYING IN THE NORTHWEST ONE-QUARTER OF SECTION 25, TOWNSHIP 42 SOUTH, RANGE 42 EAST,
CITY OF RIVIERA BEACH, PALM BEACH COUNTY, FLORIDA



- LEGEND:**
- = SET PERMANENT REFERENCE MONUMENT (P.R.M.) #2424
 - = SET PERMANENT CONTROL POINT (P.C.P.) #2424
 - = CENTERLINE
 - ORB = OFFICIAL RECORDS BOOK
 - PB = PLAT BOOK
 - PG = PAGE
 - CA = CENTRAL ANGLE
 - R = RADIUS
 - 1/4 = ONE-QUARTER
 - PBCD = PALM BEACH COUNTY
 - NBPCWD = NORTHERN PALM BEACH COUNTY WATER CONTROL DISTRICT

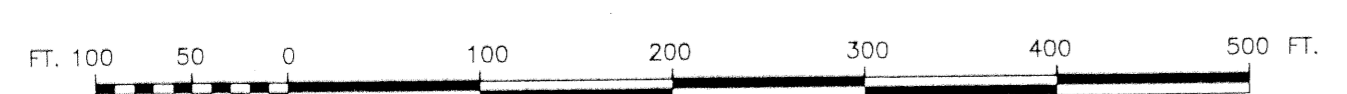
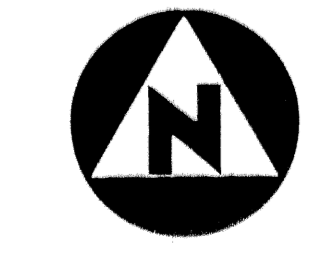
This instrument was prepared by Wm. R. Van Campen, R.L.S., in and for the offices of Bench Mark Land Surveying & Mapping, Inc., 4152 West Blue Heron Boulevard, Suite 121, Riviera Beach, Florida

BENCH MARK
Land Surveying and Mapping, Inc.
4152 West Blue Heron Blvd, Suite 121, Riviera Beach, FL 33404
Fax (407) 844-9859 Phone (407) 848-2102

RECORD PLAT
WOODBINE

DWN	D/C	FB	DATE	8-4-93	WO.#	P11
CKD	FILE	P11WPLDWG	SCALE	1"=100'	SHEET	4 OF 4

SUBDIVISION - WOODBINE
BOOK - 72
PAGE - 49
FLOOD MAP -
QUAD -
S.E.
ZIP CODE -
PID NAME - C/RIVIERA BEACH



GRAPHIC SCALE
IN FEET

722 III

REPLAT OF THE PLAT OF HORSESHOE ACRES WEST
(PLAT BOOK 41, PAGE 193)

20' FLORIDA POWER & LIGHT CO. EASEMENT
(ORB 3052, PG 304)

MATCH LINE
(SEE SHEET 3 OF 4)

MATCH LINE
(SEE SHEET 3 OF 4)

NOT A PART OF THIS PLAT

WEST RIGHT-OF-WAY
LINE MILITARY TRAIL
505'34"10"W
180'40'

WOODS EDGE
(PLAT BOOK 50, Pages 130 - 131)

WOODS EDGE
CIRCLE

WOODS EDGE
CIRCLE

WEST 1/4 CORNER
OF SECTION 25.
FOUND PBCD BRASS DISK IN CONCRETE

UNPLATTED

CENTER OF SECTION 25
TOWNSHIP 42 SOUTH
RANGE 42 EAST