

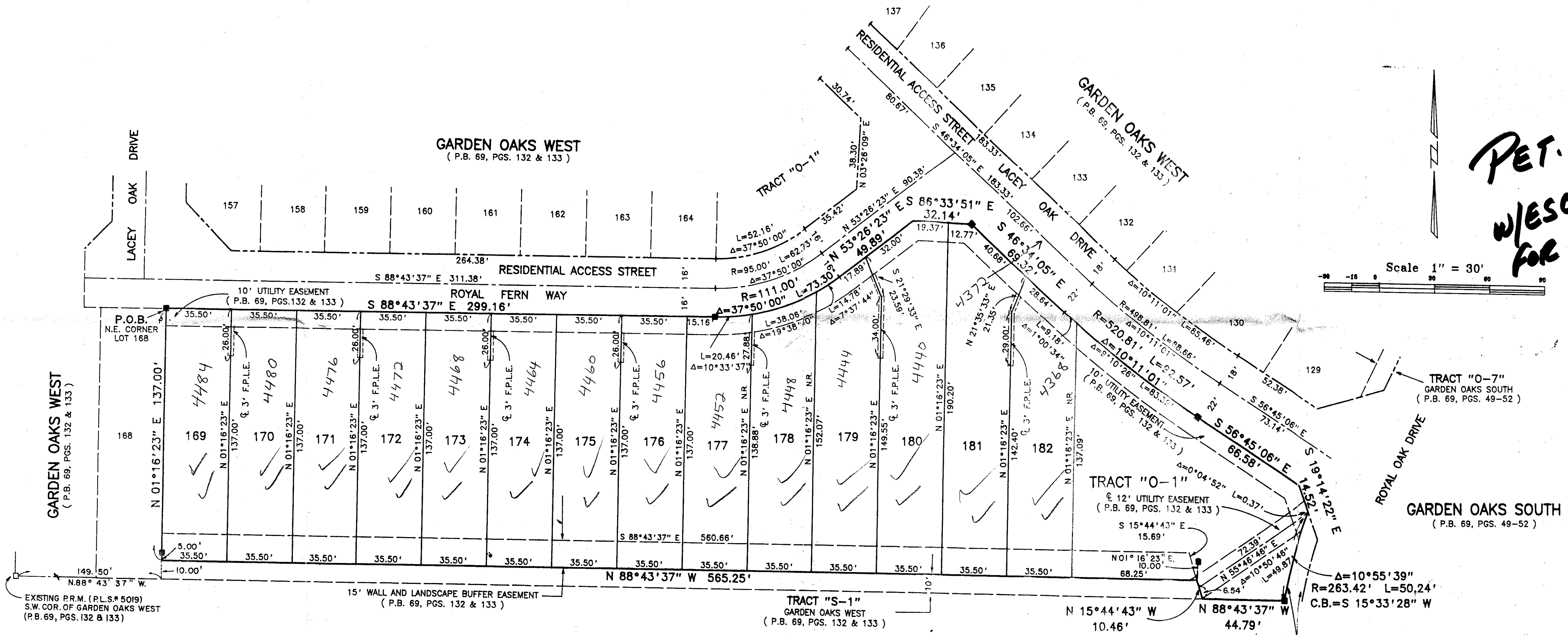
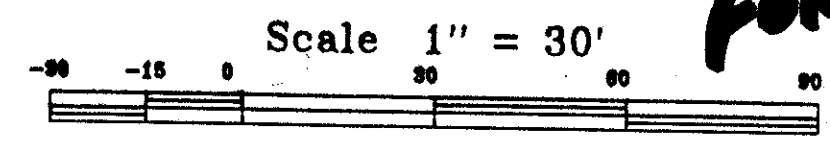
0578004

51

**GARDEN OAKS WEST PLAT 2**  
 A PLANNED UNIT DEVELOPMENT  
 LYING IN SECTION 24, TOWNSHIP 42 SOUTH, RANGE 42 EAST  
 BEING A REPLAT OF TRACT "D-1" AS SHOWN ON THE PLAT OF GARDEN OAKS WEST  
 RECORDED IN PLAT BOOK 69, PAGES 132 & 133, PUBLIC RECORDS OF PALM BEACH COUNTY, FLORIDA  
 SHEET 2 OF 2  
 DECEMBER, 1993

STATE OF FLORIDA  
 COUNTY OF PALM BEACH  
 This Plat was filed for record at \_\_\_\_\_  
 M. this day of \_\_\_\_\_, 19\_\_\_\_  
 and duly recorded in Plat Book No. \_\_\_\_\_  
 on Page \_\_\_\_\_  
 Dorothy H. Wilkin, Clerk of the Circuit Court  
 By \_\_\_\_\_ D.C.

*PET. 89-15  
 W/ESCROW AGMT  
 FOR ROADS*



TAZ 108

SUBDIVISION \*GARDEN OAKS WEST PL2  
 BOOK 72 PAGE 50  
 FLOOD ZONE FLOOD MAP # 1308  
 QUAD # 29 ZONING RM  
 SE 89-15 ZIP CODE 33416  
 PUD NAME GARDEN OAKS

GROVE PARK ELEMENTARY SCHOOL  
 (NOT PLATTED)

CIVIC SITE  
 (O.R.B. 6340, PG. 1432)

0578-004

72/51

Landmark Surveying & Mapping Inc.  
 1850 FOREST HILL BOULEVARD  
 PH. (407)433-5405 SUITE 100 W.P.B. FLORIDA

**GARDEN OAKS WEST PLAT 2**