

KEY MAP  
N.T.S.

# LAKES AT BOCA RATON - PARCEL "E"

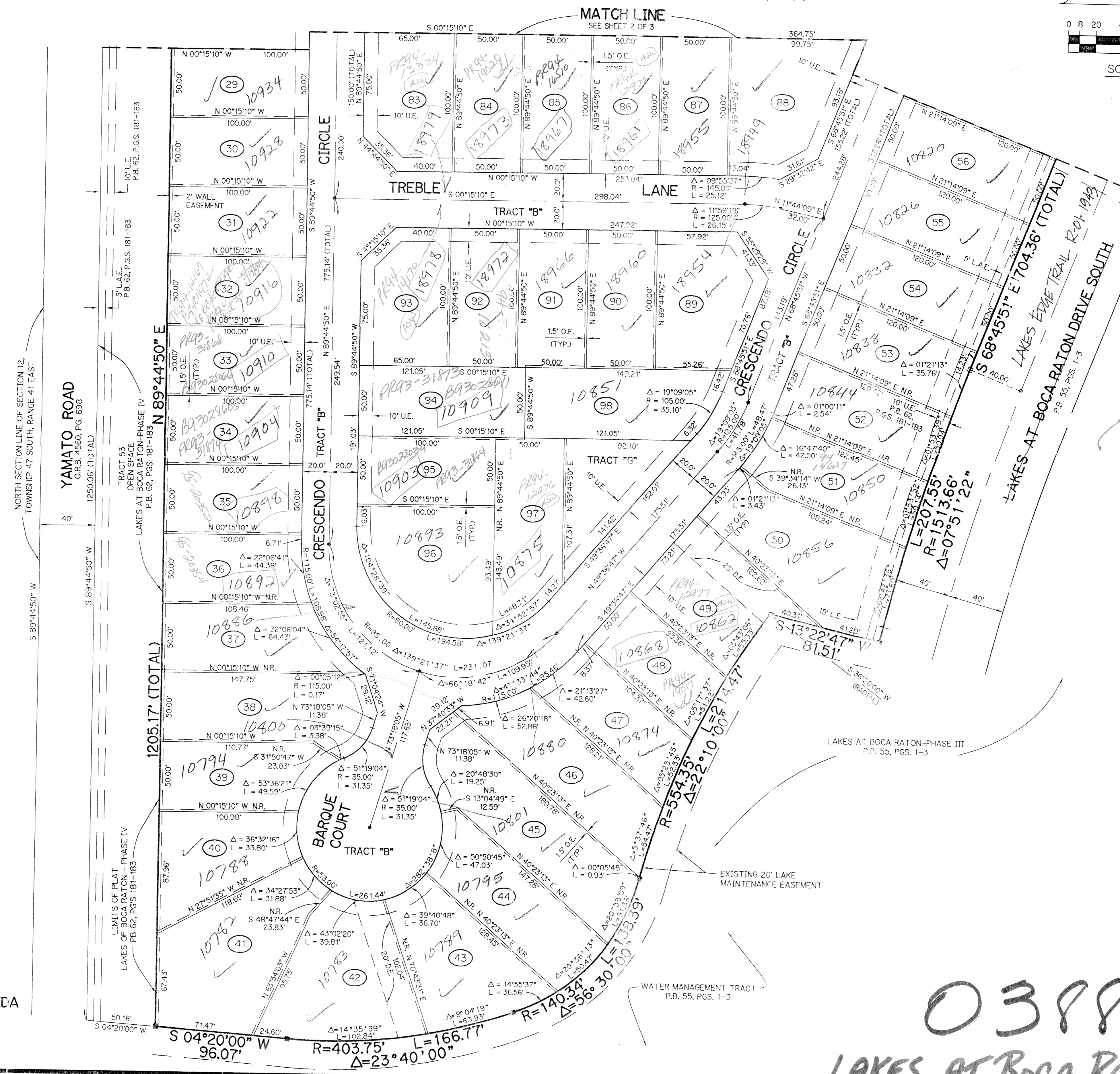
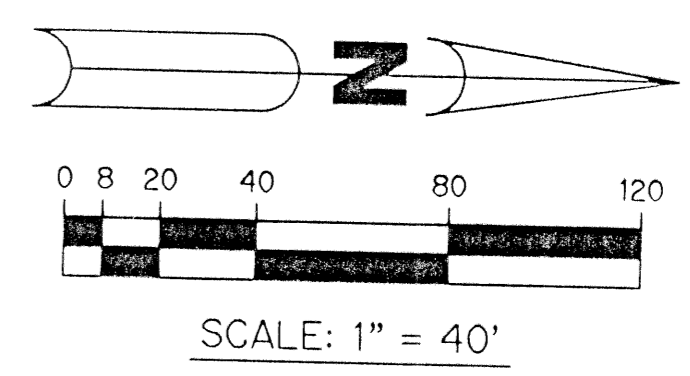
A PART OF LAKES AT BOCA RATON PHASE IV PLANNED UNIT DEVELOPMENT  
BEING A REPLAT OF ALL OF PARCEL "E" ACCORDING TO THE PLAT OF LAKES AT BOCA RATON-PHASE IV - P.U.D. AS RECORDED IN PLAT BOOK 62, PAGES 181 THROUGH 183, INCLUSIVE, OF THE PUBLIC RECORDS OF PALM BEACH COUNTY, FLORIDA. SECTION 1, TOWNSHIP 47 SOUTH, RANGE 41 EAST

388-013

58

SHEET 3 OF 3

AUGUST, 1993



LAKES AT BOCA RATON-PHASE IV  
P.B. 62, PGS. 181-183

PET. 83-121B  
ALLOC. #0001

- LEGEND:**
- - SET PERMANENT REFERENCE MONUMENT, PLS #4213
  - - SET PERMANENT CONTROL POINT, PLS #4213
  - - FOUND PERMANENT REFERENCE MONUMENT, NO NUMBER
  - - FOUND PERMANENT CONTROL POINT, PLS #1141
  - Δ - DELTA ANGLE
  - D.E. - DRAINAGE EASEMENT
  - F.E. - FLOOD PLAIN EASEMENT
  - L - ARC LENGTH
  - L.E. - LANDSCAPE EASEMENT
  - L.A.E. - LIMITED ACCESS EASEMENT
  - L.M.E. - LAKE MAINTENANCE EASEMENT
  - N.R. - NOT RADIAL
  - O.E. - OVERHANG EASEMENT
  - O.R. - OFFICIAL RECORD
  - O.R.B. - OFFICIAL RECORD BOOK
  - O.S. - OPEN SPACE
  - P.B. - PLAT BOOK
  - P.G.S. - PAGES
  - P.L.S. - PROFESSIONAL LAND SURVEYOR
  - P.U.D. - PLANNED UNIT DEVELOPMENT
  - R - RADIUS
  - R.O.W. - RIGHT-OF-WAY
  - S.T. - SURVEY TIE LINE
  - U.E. - UTILITY EASEMENT

THIS INSTRUMENT PREPARED BY  
PERRY C. WHITE, P.L.S. 4213 STATE OF FLORIDA  
LAWSON, NOBLE AND ASSOCIATES, INC.  
ENGINEERS PLANNERS SURVEYORS  
WEST PALM BEACH, FLORIDA

0388-01372/58

LAKES AT BOCA RATON-PARCEL "E" SHEET 3 OF 3

SUBDIVISION \* PARCEL E  
 BOOK 72 PAGE 58  
 FLOOD ZONE β  
 ZONING RT  
 PLAN # 08  
 MAP CODE 32458  
 MAP NAME LAKES AT BOCA RATON

TAZ 881