

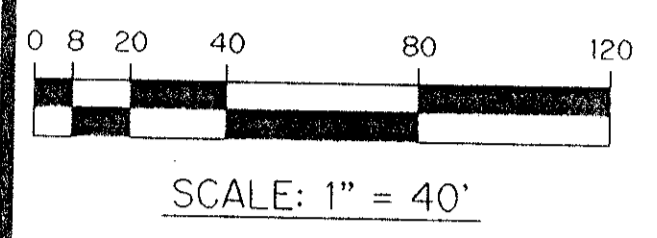
BOCA WINDS - PARCEL D-2

A PART OF THE BAY WINDS PLANNED UNIT DEVELOPMENT 201-010
A PARCEL OF LAND LYING IN SECTION 27, TOWNSHIP 47 SOUTH, RANGE 41 EAST,
SAID PARCEL ALSO BEING A REPLAT OF A PORTION OF TRACTS 5, 9, 10, 11, 12, 13, 14 AND 15,
FLORIDA FRUITLANDS COMPANY'S SUBDIVISION NO. 2, AS RECORDED IN PLAT BOOK 1,
PAGE 102, PUBLIC RECORDS OF PALM BEACH COUNTY, FLORIDA.
SHEET 4 OF 4 OCTOBER, 1993

THIS INSTRUMENT PREPARED BY
PERRY C. WHITE P.L.S. 4213 STATE OF FLORIDA
LAWSON, NOBLE AND ASSOCIATES, INC.
ENGINEERS PLANNERS SURVEYORS
WEST PALM BEACH, FLORIDA

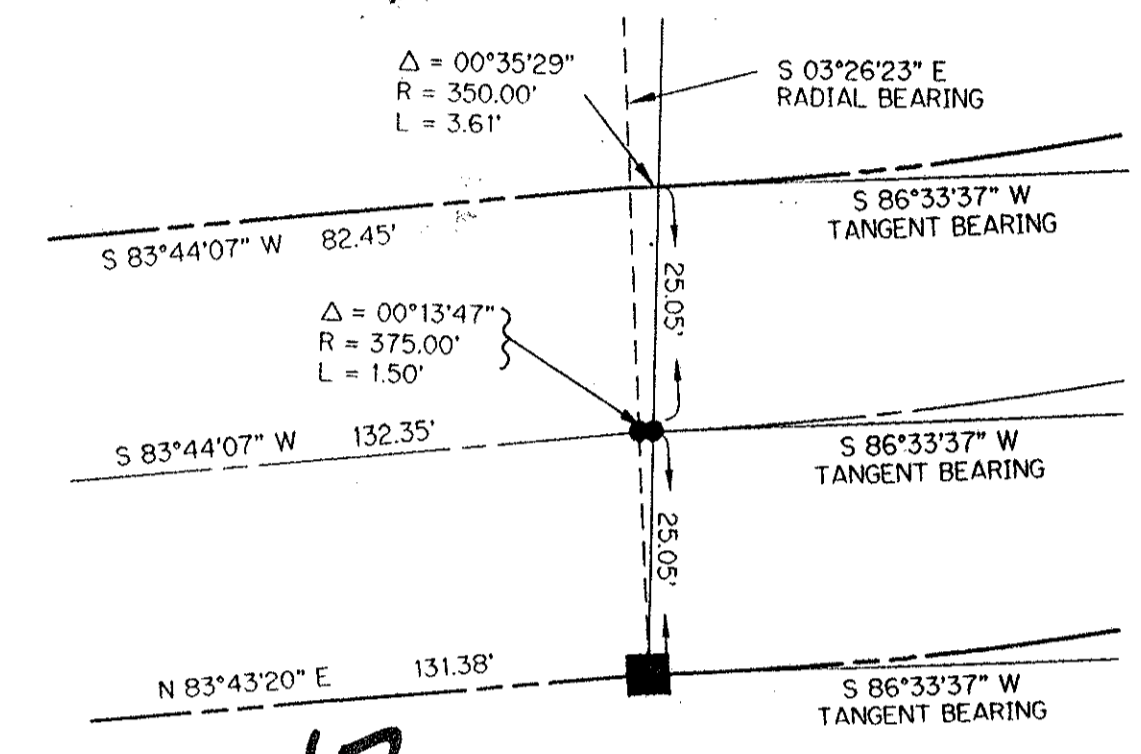
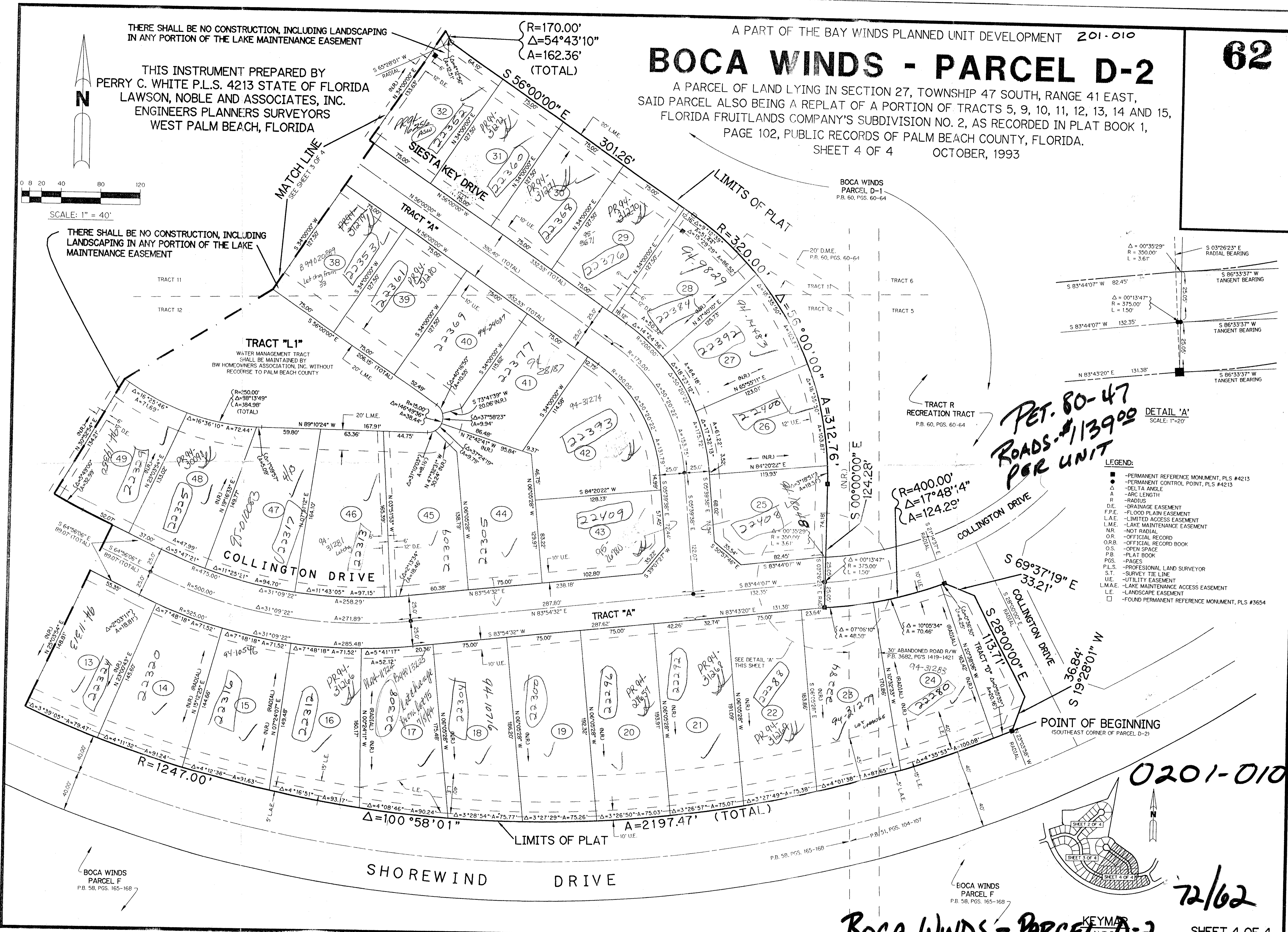
THERE SHALL BE NO CONSTRUCTION, INCLUDING LANDSCAPING
IN ANY PORTION OF THE LAKE MAINTENANCE EASEMENT

THERE SHALL BE NO CONSTRUCTION, INCLUDING
LANDSCAPING IN ANY PORTION OF THE LAKE
MAINTENANCE EASEMENT



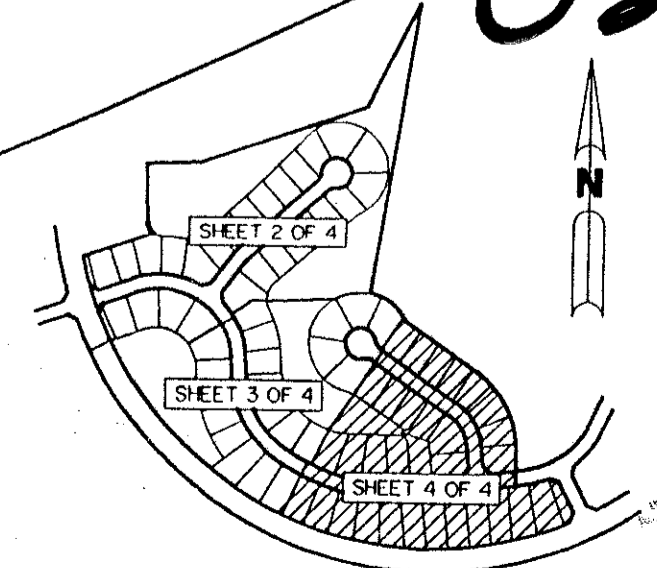
SUBDIVISION # BOCA WINDS, PARCEL D-2
BOOK 72 PAGE 62
FLOOD ZONE AO-1 FLOOD MAP # 100B
QUAD # 69 ZONING RT
SE 80-47 ZIP CODE 33478
PUD NAME BAY WINDS 33033

702 778



PET. 80-47
ROADS #113900
PER UNIT

- LEGEND:
- - PERMANENT REFERENCE MONUMENT, PLS #4213
 - - PERMANENT CONTROL POINT, PLS #4213
 - Δ - DELTA ANGLE
 - R - ARC LENGTH
 - A - RADIUS
 - D.E. - DRAINAGE EASEMENT
 - F.P.E. - FLOOD PLAIN EASEMENT
 - L.A.E. - LIMITED ACCESS EASEMENT
 - L.M.E. - LAKE MAINTENANCE EASEMENT
 - NR. - NOT RADIAL
 - O.R. - OFFICIAL RECORD
 - O.R.B. - OFFICIAL RECORD BOOK
 - O.S. - OPEN SPACE
 - P.B. - PLAT BOOK
 - PGS. - PAGES
 - P.L.S. - PROFESSIONAL LAND SURVEYOR
 - S.T. - SURVEY TIE LINE
 - U.E. - UTILITY EASEMENT
 - L.M.A.E. - LAKE MAINTENANCE ACCESS EASEMENT
 - L.E. - LANDSCAPE EASEMENT
 - - FOUND PERMANENT REFERENCE MONUMENT, PLS #3654



72/62