

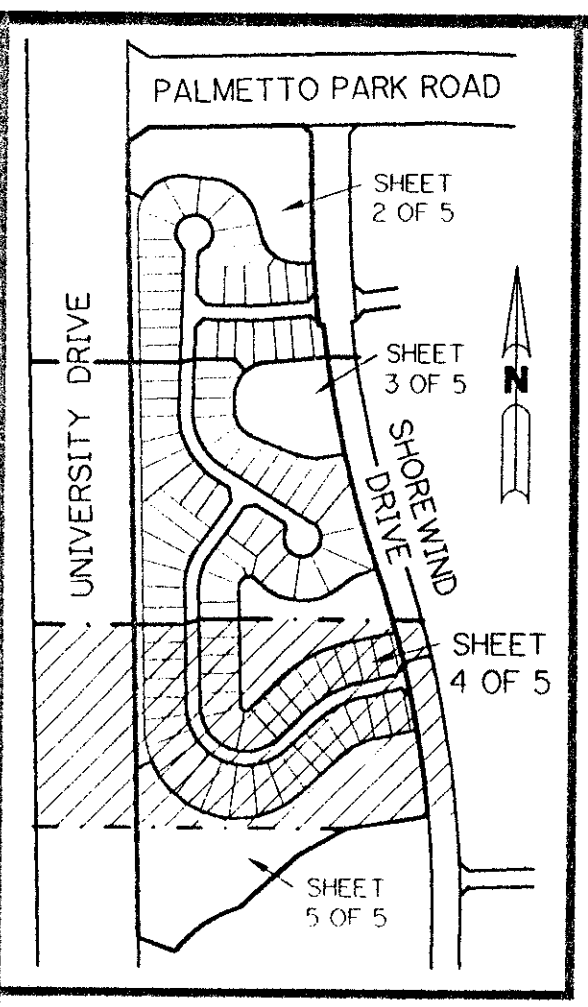
# BOCA WINDS - PARCEL G

A PART OF THE BAY WINDS PLANNED UNIT DEVELOPMENT  
A PARCEL OF LAND LYING IN SECTIONS 22 AND 27, TOWNSHIP 47 SOUTH,  
RANGE 41 EAST, AND BEING A REPLAT OF A PORTION OF TRACTS 15 AND 16, FLORIDA FRUITLANDS  
COMPANY'S SUBDIVISION NO. 2, AS RECORDED IN PLAT BOOK 1, PAGE 102,  
PUBLIC RECORDS OF PALM BEACH COUNTY, FLORIDA.

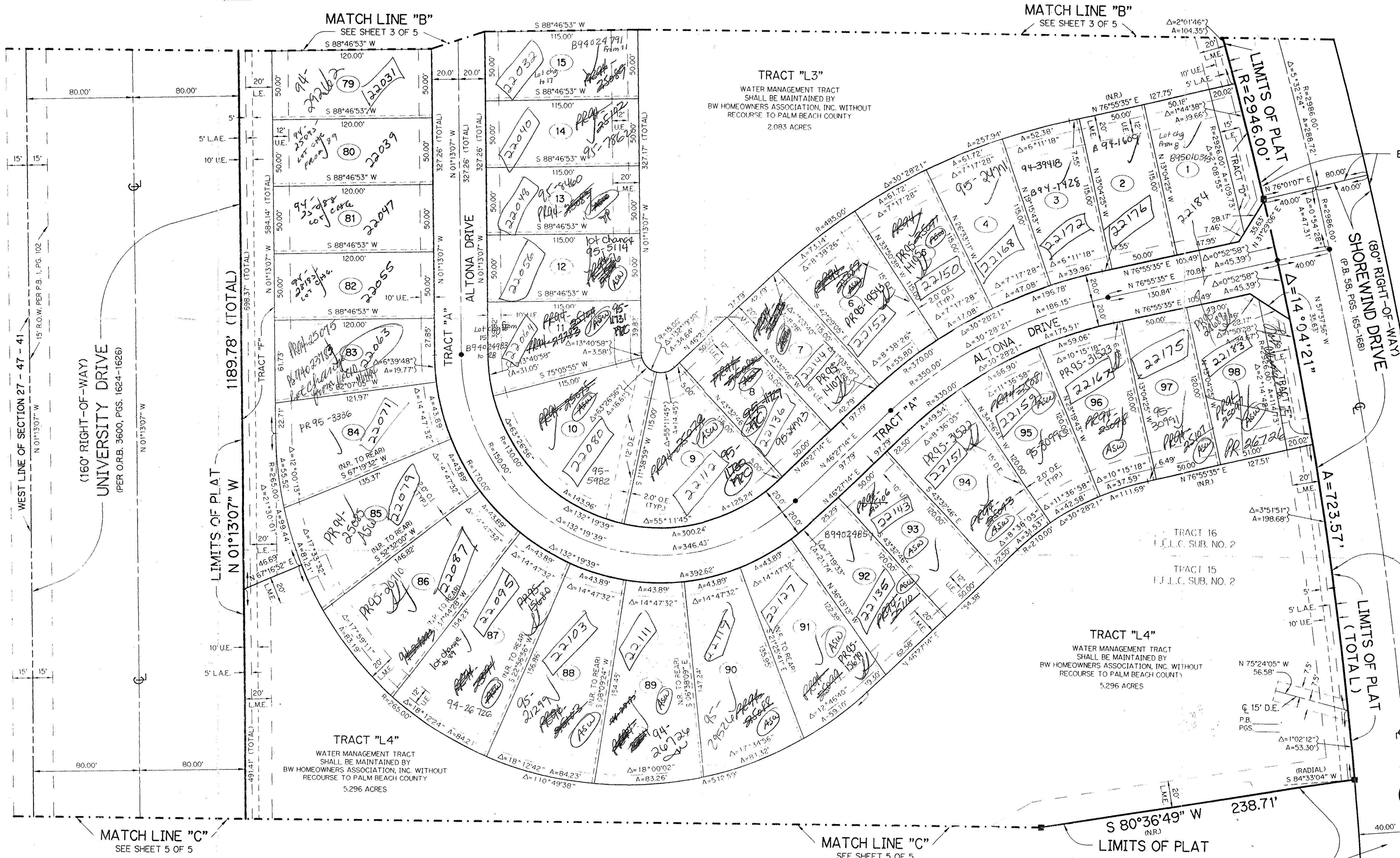
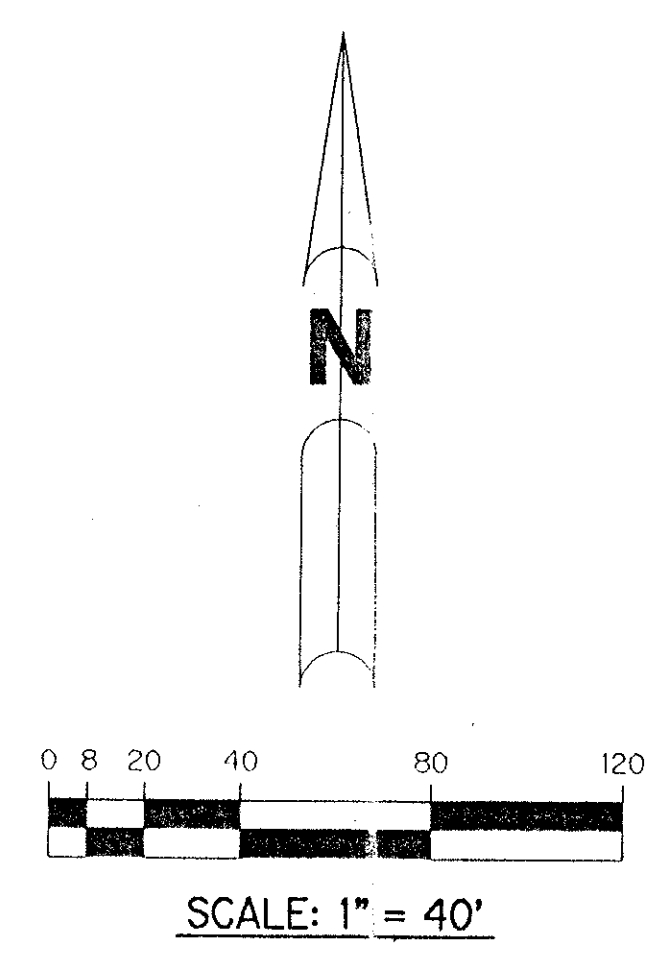
SHEET 4 OF 5 JANUARY, 1994

### LEGEND:

- - PERMANENT REFERENCE MONUMENT, PLS #4213
- △ - PERMANENT CONTROL POINT, PLS #4213
- Δ - DELTA ANGLE
- A - ARC LENGTH
- D.E. - DRAINAGE EASEMENT
- F.F.L.C. SUB. NO. 2 - FLORIDA FRUITLANDS COMPANY'S SUBDIVISION NUMBER 2 (P.B. 1, PG. 102)
- L.A.E. - LIMITED ACCESS EASEMENT
- LE - LANDSCAPE EASEMENT
- L.M.E. - LAKE MAINTENANCE EASEMENT
- N.R. - NOT RADIAL
- O.R. - OFFICIAL RECORD
- O.R.B. - OFFICIAL RECORD BOOK
- O.S. - OPEN SPACE
- P.B. - PLAT BOOK
- P.G.S. - PAGES
- P.B. CO. - PALM BEACH COUNTY
- P.L.S. - PROFESSIONAL LAND SURVEYOR
- P.U.D. - PLANNED UNIT DEVELOPMENT
- R - RADIUS
- R.O.W. - RIGHT-OF-WAY
- U.E. - UTILITY EASEMENT



KEY MAP  
N.T.S.



BOCA WINDS - PARCEL E  
(P.B. 72, PGS. 68-75)

*PET. 80-47  
ROADS #113999  
PER UNIT  
W/ESCROW AGMT  
FOR SCHOOLS, PARKS  
& ROADS 7/1/94*

BOCA WINDS - PARCEL E  
(P.B. 72, PGS. 68-76)

0201-014

72/79

BOCA WINDS - PARCEL G

THIS INSTRUMENT PREPARED BY  
PERRY C. WHITE P.L.S. 4213 STATE OF FLORIDA  
LAWSON, NOBLE AND ASSOCIATES, INC.  
ENGINEERS PLANNERS SURVEYORS  
WEST PALM BEACH, FLORIDA

SUBDIVISION # BOCA WINDS  
 BOOK 72 PAGE 79  
 FLOOD ZONE AO-1 FLOOD MAP # 100B  
 QUAD # 69 ZONING RT  
 SS 80-47 ZIP CODE 33473  
 CUD NAME BAY WINDS 33433

Taz 778