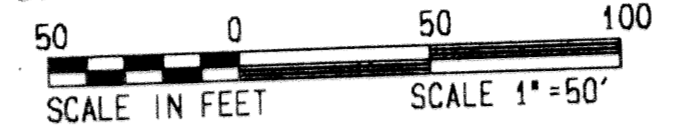


WOODFIELD CIRCLE PLAT TWO

IN PART OF SECTION 4, TOWNSHIP 47 SOUTH, RANGE 42 EAST
CITY OF BOCA RATON, PALM BEACH COUNTY, FLORIDA
SHEET NO. 2 OF 3

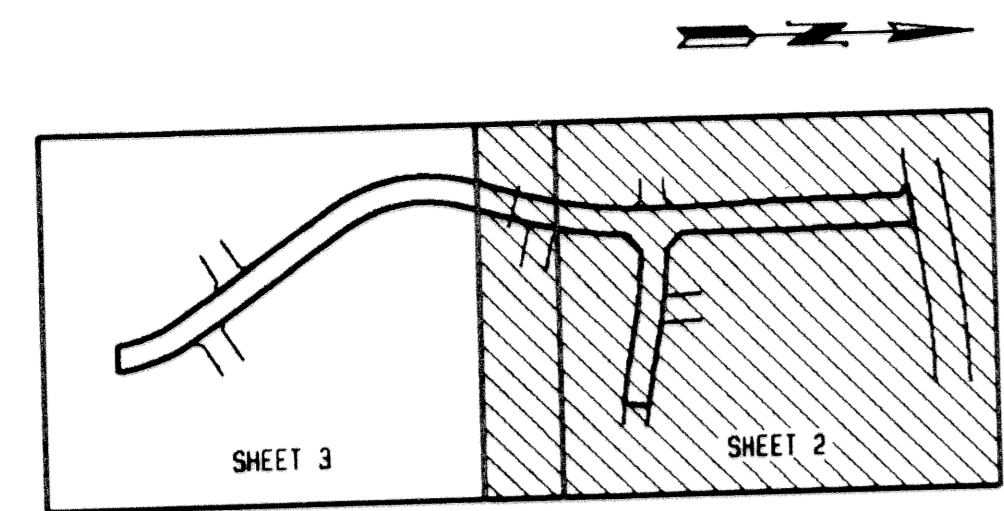
GEE & JENSON
ENGINEERS - ARCHITECTS - PLANNERS, INC.
WEST PALM BEACH, FLORIDA
JANUARY 1994



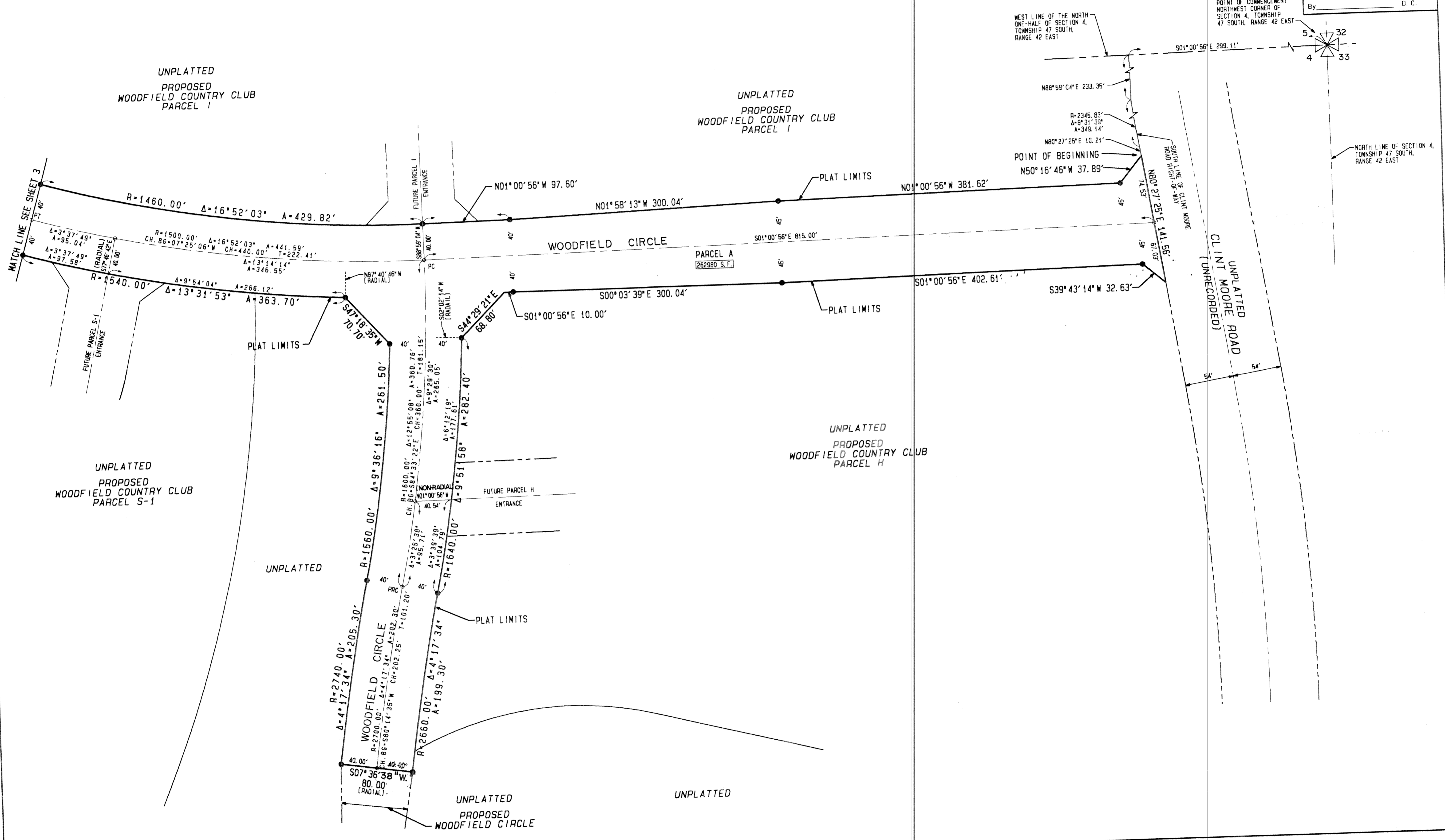
SCALE: 1" = 50'

STATE OF FLORIDA
COUNTY OF PALM BEACH
This plat was filed for
record at _____ M. This day
of _____ 1994, and duly
recorded in Plat Book No. _____
on Pages _____ thru _____.

DOROTHY WILKEN
Clerk Circuit Court
By _____ D. C.



KEY MAP
NOT TO SCALE



SUBDIVISION # WOODFIELD CIRCLE PLAT TWO
BOOK 72 PAGE 82
FLOOD MAP # -
FLOOD ZONE -
ZONING -
QUAD # -
SE -
ZIP CODE -
PUD NAME - Boca

722 604

COMPUTED _____
DRAWN _____
CHECKED _____
APPROVED _____
JOB NO. 93-330