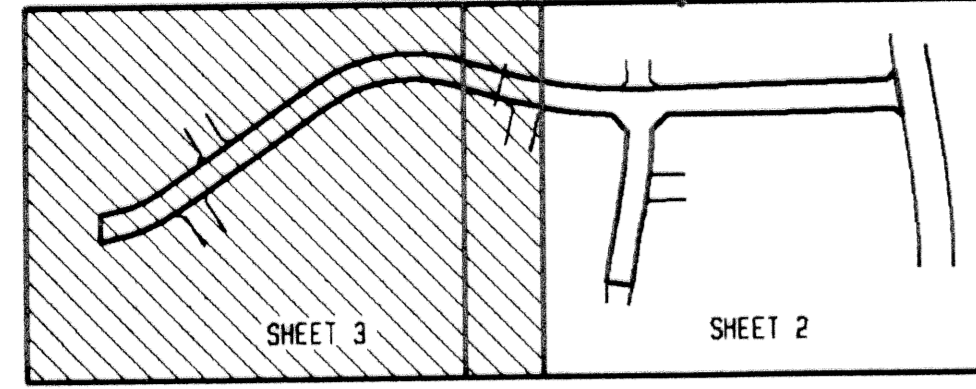
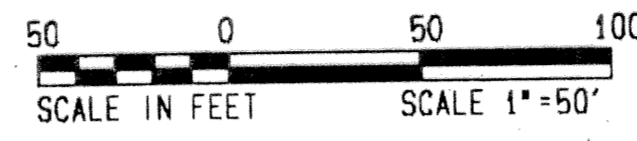


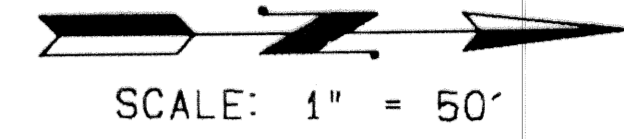
# WOODFIELD CIRCLE PLAT TWO

IN PART OF SECTION 4, TOWNSHIP 47 SOUTH, RANGE 42 EAST  
CITY OF BOCA RATON, PALM BEACH COUNTY, FLORIDA  
SHEET NO. 3 OF 3

GEE & JENSON  
ENGINEERS - ARCHITECTS - PLANNERS, INC.  
WEST PALM BEACH, FLORIDA  
JANUARY 1994



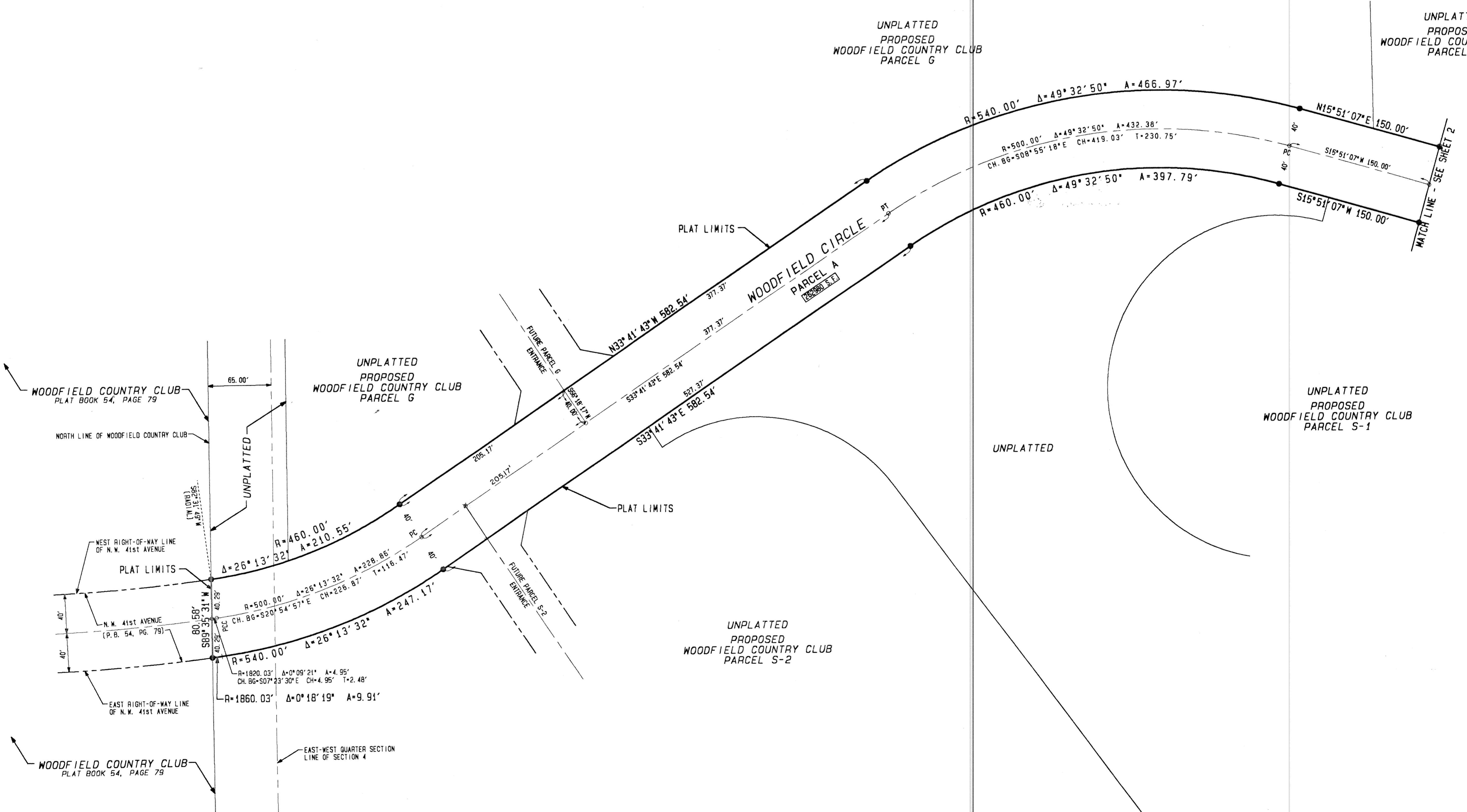
KEY MAP  
NOT TO SCALE



STATE OF FLORIDA  
COUNTY OF PALM BEACH  
This plat was filed for  
record at \_\_\_\_\_ M. this \_\_\_\_\_ day  
of \_\_\_\_\_ 1994, and duly  
recorded in Plat Book No. \_\_\_\_\_  
on Pages \_\_\_\_\_ thru \_\_\_\_\_  
DOROTHY WILKEN  
Clerk Circuit Court  
By \_\_\_\_\_ D. C.

UNPLATTED  
PROPOSED  
WOODFIELD COUNTRY CLUB  
PARCEL G

UNPLATTED  
PROPOSED  
WOODFIELD COUNTRY CLUB  
PARCEL 1



Subdivision # Woodfield Circle Plat Two  
BOOK 72 PAGE 83  
FLOOD MAP # -  
FLOOD ZONE -  
ROAD # -  
ZIP CODE -  
CITY NAME - Boca.

COMPUTED \_\_\_\_\_  
DRAWN \_\_\_\_\_  
CHECKED \_\_\_\_\_  
APPROVED \_\_\_\_\_  
JOB NO. 93-330

T&Z 604