

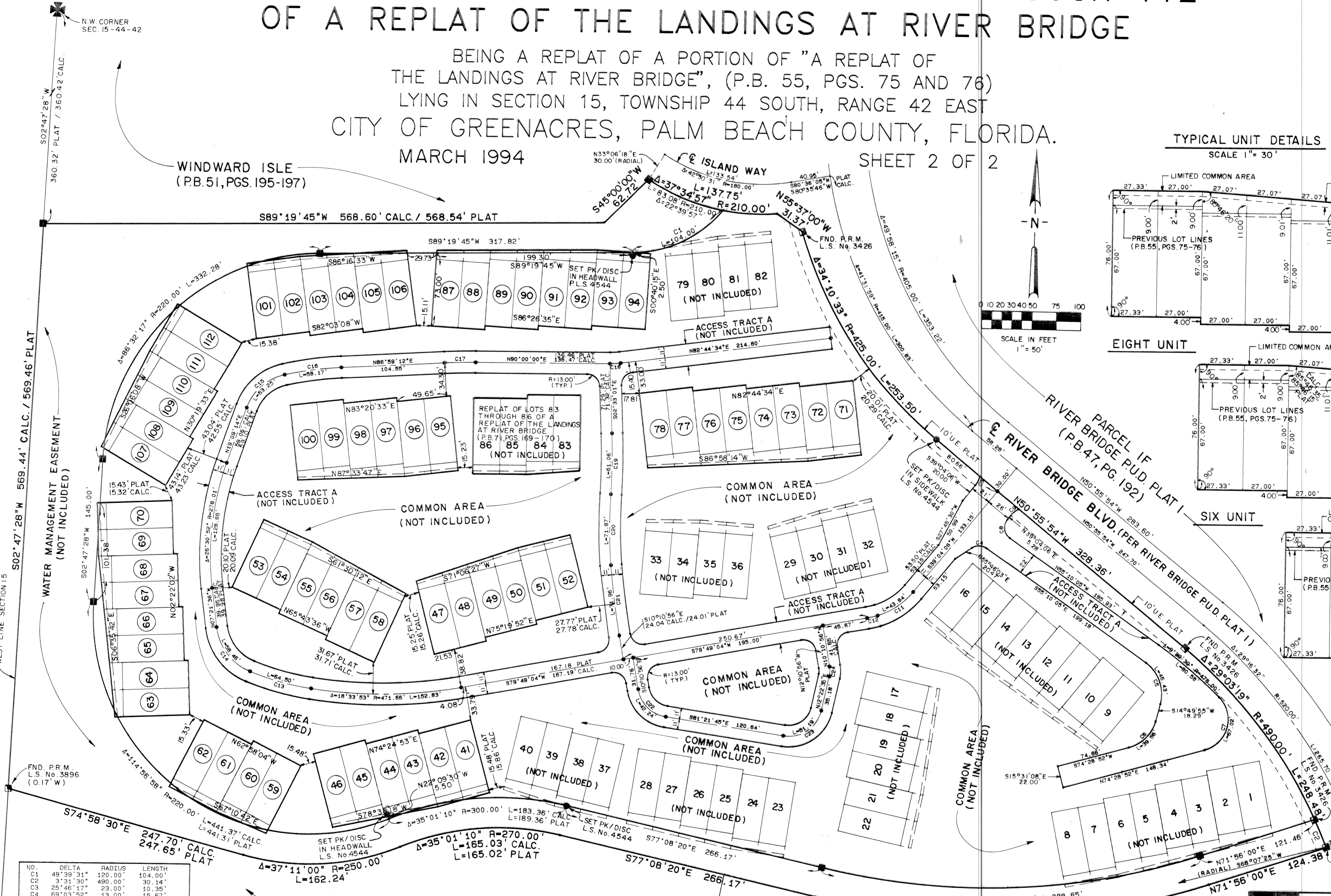
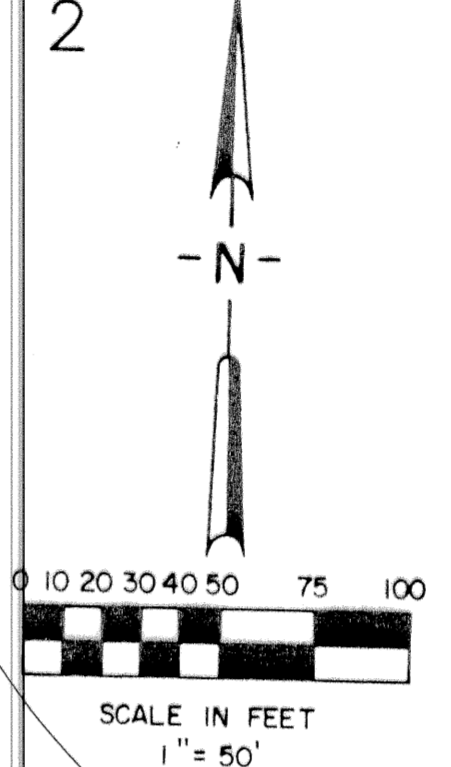
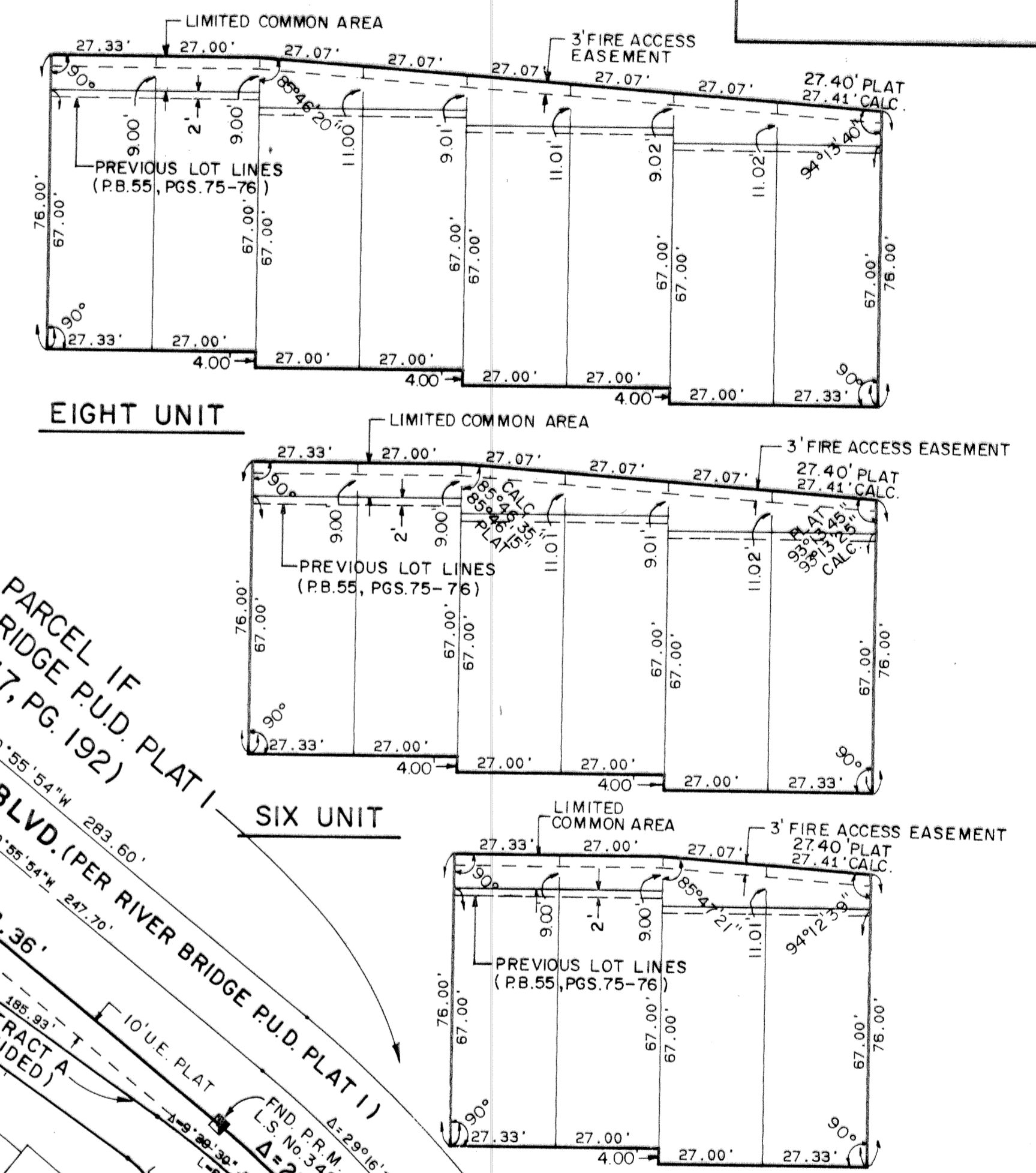
# REPLAT OF LOTS 41 THROUGH 78 AND 87 THROUGH 112 OF A REPLAT OF THE LANDINGS AT RIVER BRIDGE

BEING A REPLAT OF A PORTION OF "A REPLAT OF THE LANDINGS AT RIVER BRIDGE", (P.B. 55, PGS. 75 AND 76) LYING IN SECTION 15, TOWNSHIP 44 SOUTH, RANGE 42 EAST CITY OF GREENACRES, PALM BEACH COUNTY, FLORIDA.  
MARCH 1994

SHEET 2 OF 2

STATE OF FLORIDA  
COUNTY OF PALM BEACH  
This plat was filed for record at \_\_\_\_\_, this day of \_\_\_\_\_, 1994, and duly recorded in Plat Book No. \_\_\_\_\_ on Pages \_\_\_\_\_ thru \_\_\_\_\_.  
Dorothy H. Wilcox  
Clerk Circuit Court  
By: \_\_\_\_\_

TYPICAL UNIT DETAILS  
SCALE 1" = 30'



NO.	DELTA	RADIUS	LENGTH
C1	49°39'31"	120.00'	104.00'
C2	3°31'30"	490.00'	30.14'
C3	2°56'17"	23.00'	10.36'
C4	69°03'52"	13.00'	15.67'
C5	70°00'00"	38.00'	46.43'
C6	59°38'57"	32.00'	39.56'
C7	119°59'27"	32.00'	67.02'
C8	94°14'11"	13.00'	21.38'
C9	25°46'17"	23.00'	10.36'
C10	8°26'14"	415.00'	61.11'
C11	39°29'32"	75.00'	43.84'
C12	7°15'26"	84.98'	10.76'
C13	12°52'54"	286.89'	64.50'
C14	61°22'32"	54.57'	58.46'
C15	57°58'09"	52.64'	53.29'
C16	9°51'49"	337.91'	58.17'
C17	3°00'48"	600.00'	31.56'
C18	1°15'26"	84.98'	10.76'
C19	5°46'19"	606.14'	61.06'
C20	8°24'59"	489.29'	71.87'
C21	4°59'14"	826.88'	71.96'
C22	71°10'49"	34.00'	42.24'
C23	86°15'40"	34.00'	51.19'
C24	22°33'32"	25.00'	9.84'

PARCEL 2B  
RIVER BRIDGE P.U.D. PLAT 2  
(P.B. 56, PGS. 197-200)

REPLAT OF PARCEL 2A, RIVER BRIDGE P.U.D. PLAT 2  
(P.B. 64, PGS. 36-37)

- LEGEND
- D.E. DRAINAGE EASEMENT
  - U.E. UTILITY EASEMENT
  - P.B. PLAT BOOK
  - O.R.B. OFFICIAL RECORD BOOK
  - P.C. POINT OF CURVATURE
  - P.T. POINT OF TANGENCY
  - P.O.C. POINT OF COMMENCEMENT
  - P.O.B. POINT OF BEGINNING
  - P.C.P. PERMANENT CONTROL POINT
  - P.R.M. PERMANENT REFERENCE MONUMENT
  - R/W RIGHT-OF-WAY
  - REF. REFERENCE MONUMENT
  - SEC. SECTION
  - TWP. TOWNSHIP
  - RNG. RANGE
  - P.L.S. PROFESSIONAL LAND SURVEYOR
  - L.B. LICENSED BUSINESS
  - TYP. TYPICAL

**PETSCH & ASSOCIATES, INC.**  
Professional Engineers - Land Surveyors - Development Consultants - Testing Services  
2581 Metrocentre Boulevard, Suite 6, West Palm Beach, Florida 33407 (407) 640-3800  
6799 Overseas Highway, Suite 7, Marathon, Florida 33050 (305) 743-5788

REPLAT OF LOTS 41 THROUGH 78 AND 87 THROUGH 112 OF A REPLAT OF THE LANDINGS AT RIVER BRIDGE SECTION 15, TOWNSHIP 44S., RANGE 42E. CITY OF GREENACRES, FLORIDA

Drawn by: M.E.H. Date: FEB. 1994 SCALE: 1" = 50' JOB NUMBER: 93-046-2 SHEET OF 2 OF 2  
Designed by: R. HAGLER Checked by: R. HAGLER

Subdivision - The Landings  
PAGE 85  
BOOK 72  
FLOOD ZONE -  
ROAD # -  
ZIP CODE -  
CITY - GREENACRES  
COUNTY - PALM BEACH

TAZ 339