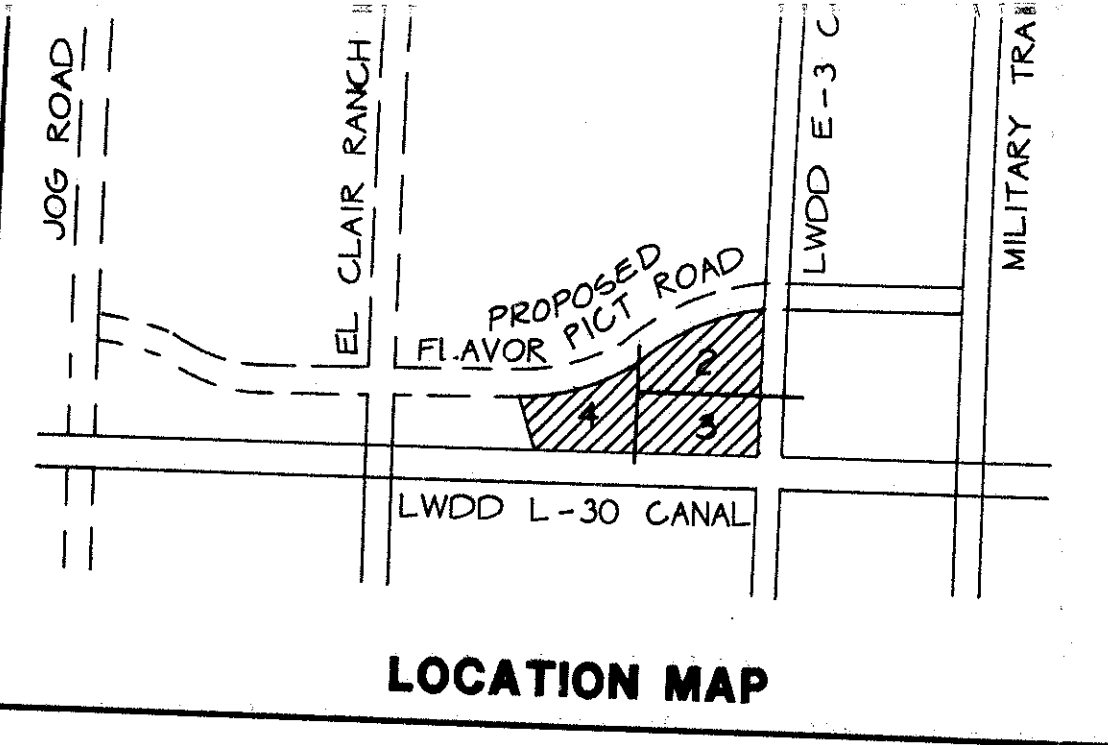


# CORAL LAKES V, A P.U.D.

0614-007

132

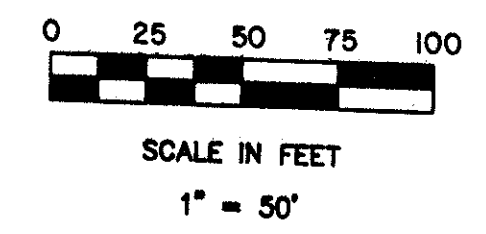
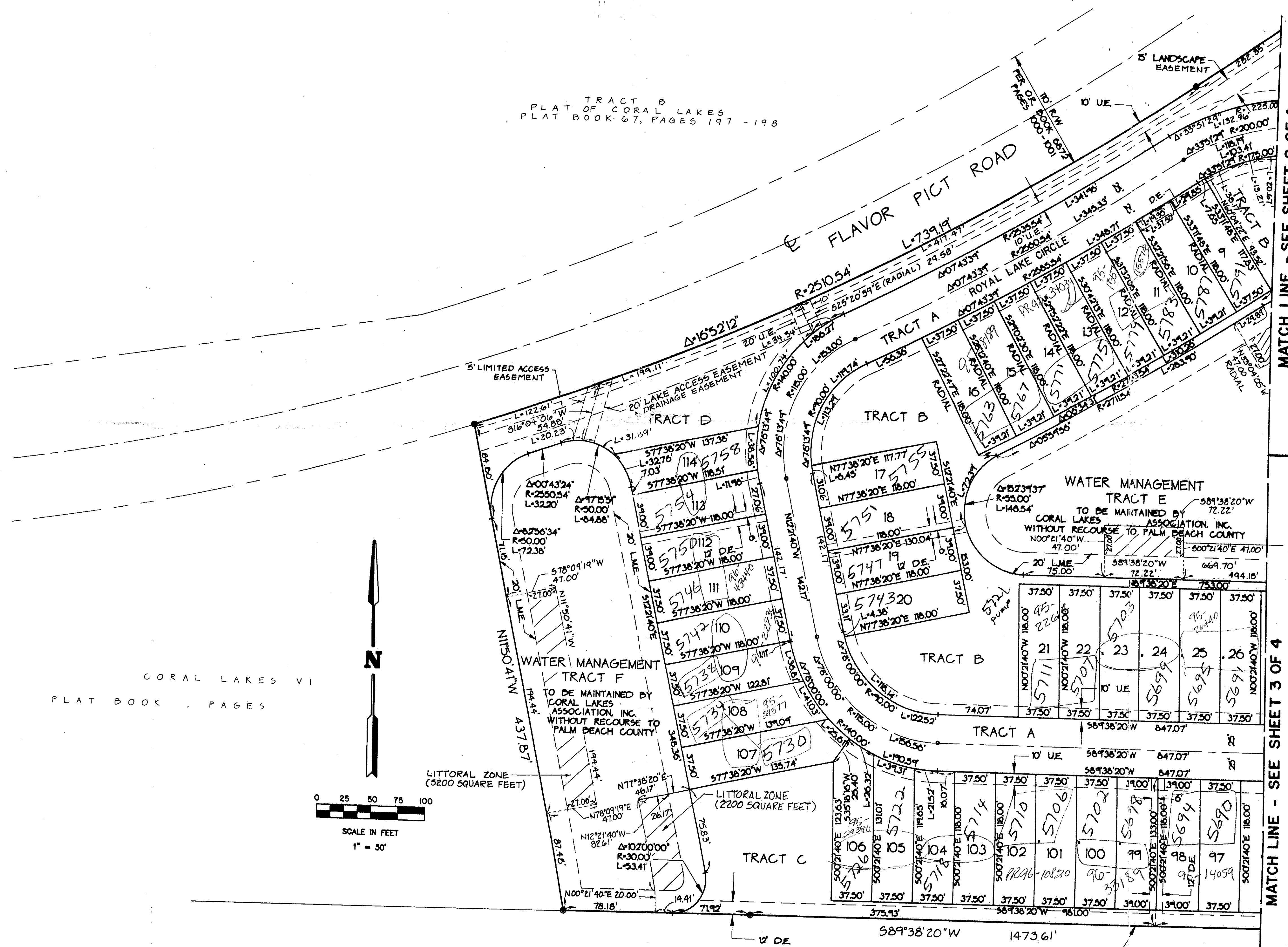
A REPLAT OF A PORTION OF TRACT D OF THE PLAT OF CORAL LAKES, AS RECORDED IN PLAT BOOK 67, PAGES 197 THROUGH 198 INCLUSIVE, AND A PORTION OF FLAVOR PICT ROAD RIGHT-OF-WAY AS RECORDED IN OFFICIAL RECORD BOOK 6872, PAGES 1000 THROUGH 1001 INCLUSIVE ALL IN THE PUBLIC RECORDS OF PALM BEACH COUNTY, FLORIDA, ALL IN SECTION 2, TOWNSHIP 46 SOUTH, RANGE 42 EAST, PALM BEACH COUNTY, FLORIDA  
 THIS INSTRUMENT PREPARED BY JAMES E. PARK, P.L.S.  
 WILLIAMS, HATFIELD & STONER, INC. - ENGINEERS PLANNERS SURVEYORS  
 1325 SOUTH CONGRESS AVENUE, SUITE 118, BOYNTON BEACH, FLORIDA 33426



LOCATION MAP

SHEET 4 OF 4

TRACT B  
 PLAT OF CORAL LAKES  
 PLAT BOOK 67, PAGES 197 - 198



CORAL LAKES VI  
 PLAT BOOK PAGES

MATCH LINE - SEE SHEET 2 OF 4

MATCH LINE - SEE SHEET 3 OF 4

PET. 614-013  
 ALLOC. #0001

SUBDIVISION # CORAL LAKES V  
 BOOK 72  
 PAGE 132  
 FLOOD ZONE 15  
 QUAD # 36  
 SEE MAP-15  
 MAP NAME SQU. 1A3 450

0614-007

CORAL LAKES V 72/132