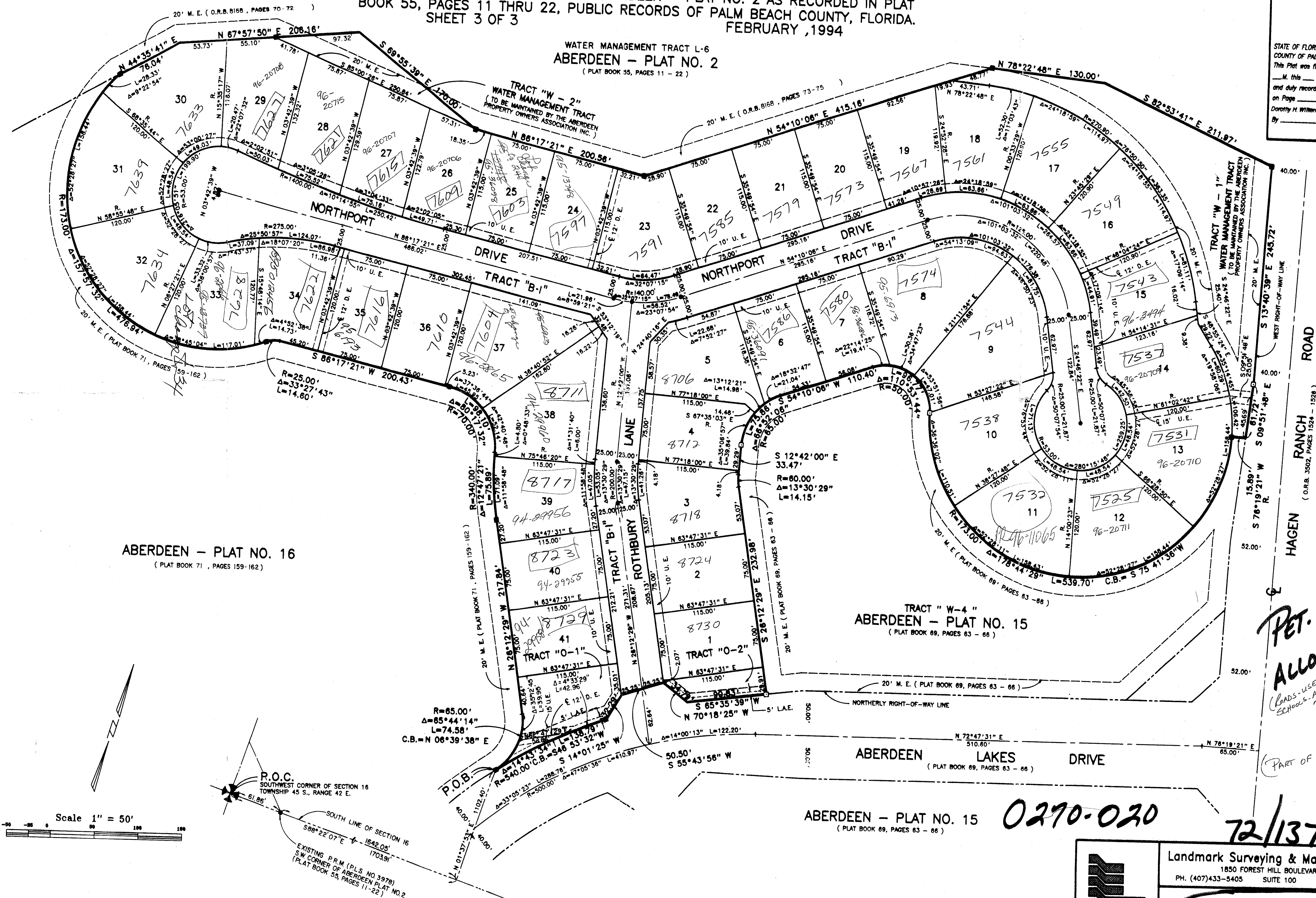


# ABERDEEN - PLAT NO. 19

A PORTION OF A P.U.D.  
 LYING IN SECTION 16, TOWNSHIP 45 SOUTH, RANGE 42 EAST  
 BEING A REPLAT OF A PORTION OF ABERDEEN - PLAT NO. 2 AS RECORDED IN PLAT  
 BOOK 55, PAGES 11 THRU 22, PUBLIC RECORDS OF PALM BEACH COUNTY, FLORIDA.  
 SHEET 3 OF 3  
 FEBRUARY, 1994

# 137

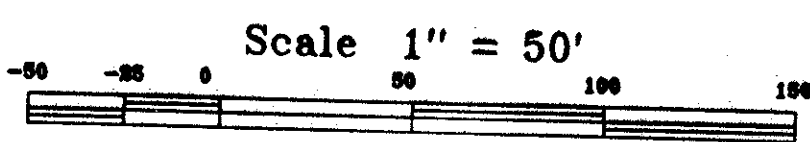
STATE OF FLORIDA  
 COUNTY OF PALM BEACH  
 This Plat was filed for record at \_\_\_\_\_  
 M. this \_\_\_\_\_ day of \_\_\_\_\_ 19\_\_\_\_  
 and duly recorded in Plat Book No. \_\_\_\_\_  
 on Page \_\_\_\_\_  
 Dorothy H. Wilton, Clerk of the Circuit Court  
 by \_\_\_\_\_ D.C.



ABERDEEN - PLAT NO. 16  
 (PLAT BOOK 71, PAGES 159-162)

TRACT "W-4"  
 ABERDEEN - PLAT NO. 15  
 (PLAT BOOK 69, PAGES 63-66)

ABERDEEN - PLAT NO. 15  
 (PLAT BOOK 69, PAGES 63-66)



SUBDIVISION - Aberdeen Plat No. 19  
 BOOK 72 PAGE 137  
 FLOOD ZONE B  
 CRD # 44  
 ZIP CODE 33437  
 782 447

R.O.C.  
 SOUTHWEST CORNER OF SECTION 16  
 TOWNSHIP 45 S., RANGE 42 E.  
 EXISTING P.R.M. (P.L.S. NO. 3978)  
 SW CORNER OF ABERDEEN PLAT NO. 2  
 (PLAT BOOK 55, PAGES 11-22)

0270-020

72/137

PET. 80-153  
 Alloc. #0001  
 (LOADS - USED)  
 (SCHOOLS - ALMOST USED)  
 7/1/94  
 (PART OF P.O.D.F.)

Landmark Surveying & Mapping Inc.  
 1850 FOREST HILL BOULEVARD  
 PH. (407)433-5405 SUITE 100 W.P.B. FLORIDA

**ABERDEEN-PLAT NO. 19**