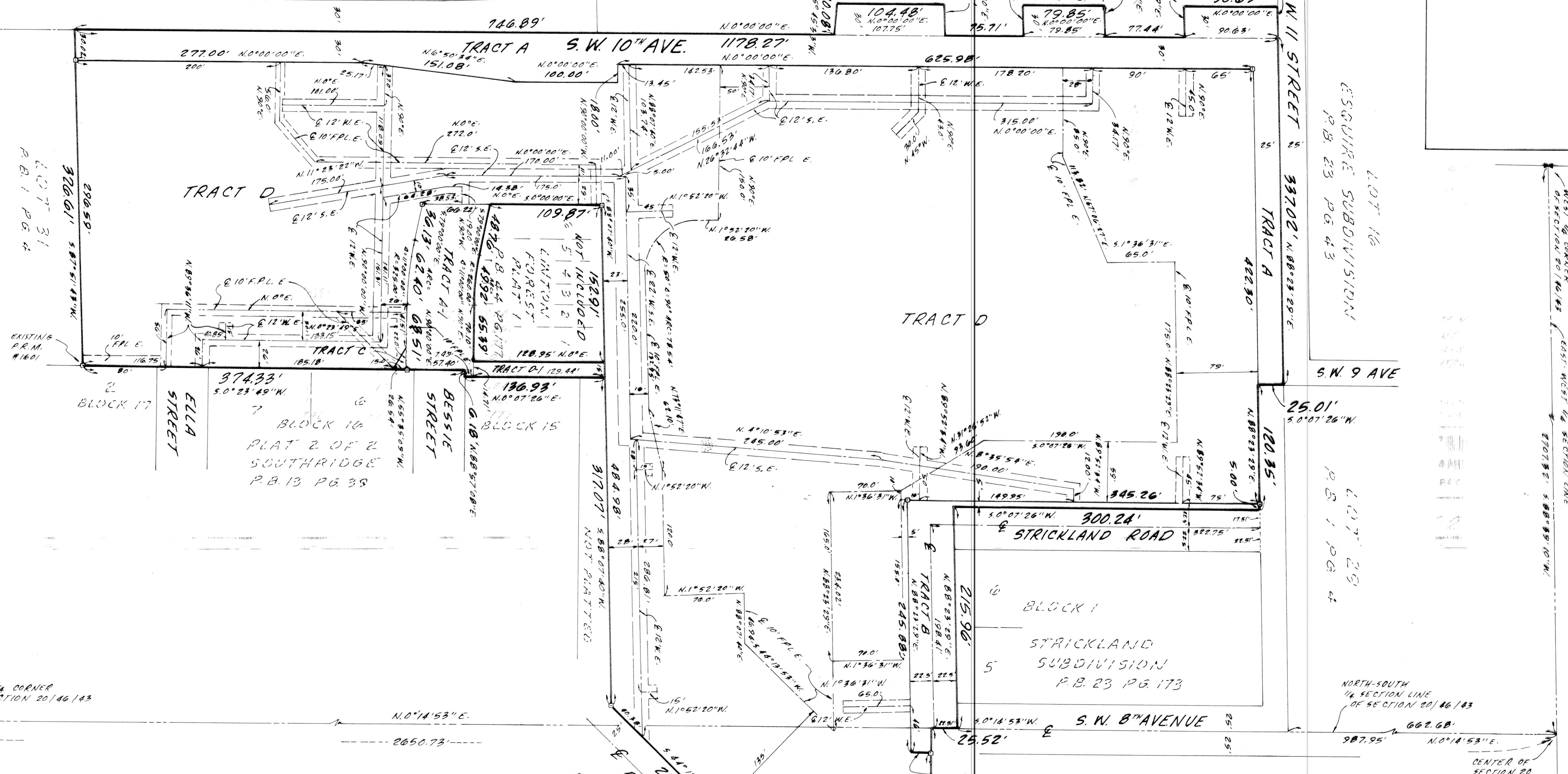
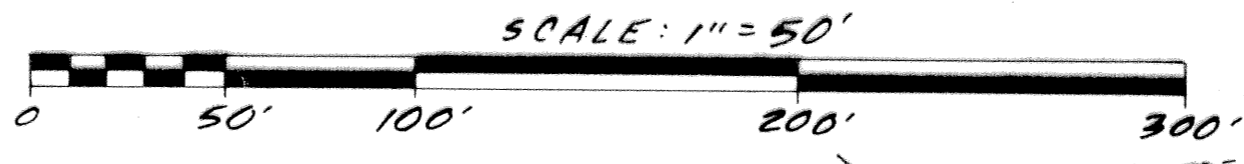


# THE GROVES OF DELRAY

# 143

WALLACE DODGE P.B. \* PG \*  
\* PENDING PLATTING PROCEDURE



AREAS:

TRACT	SQUARE FEET	ACRES
A	54,465	1.2503
B	11,925	0.2738
C	165	0.0037
D	434,941	11.3023
A-1	10598	0.2433
D-1	1919	0.0440
TOTAL	574,013	13.1774

**LEGEND:**  
 "C" = CENTERLINE  
 "U.E." = UTILITY EASEMENT  
 "P.M." = PERMANENT REFERENCE MONUMENT  
 "W.E." = WATER MAIN EASEMENT  
 "S.E." = SANITARY SEWER EASEMENT  
 "W.S.E." = WATER MAIN & SANITARY SEWER EASEMENT  
 "P.B." = PLAT BOOK  
 "FPL E." = EASEMENT FOR FPL COMPANY AND EASEMENT FOR SOUTHERN BELL

**O'BRIEN, SUITER & O'BRIEN, INC.**  
 ENGINEERS, SURVEYORS, LAND PLANNERS  
 2601 NORTH FEDERAL HIGHWAY, DELRAY BEACH, FLORIDA

DATE: JAN. 1994  
 FIELD BOOK: 0223  
 PAGE: 52  
 SCALE: 1"=50'  
 ORDER NO: 93-200

SHEET 2 OF 2

SUBDIVISION \* GROVES OF DELRAY  
 BOOK 72 PAGE 143  
 FLOOD ZONE -  
 QUAD # -  
 SE - ZIP CODE -  
 ROAD NAME CIDEWAY

742 502

SOUTH 1/4 CORNER OF SECTION 20/46/143  
 SOUTH LINE OF STRICKLAND RD  
 LINTON BLVD

PLAT 2 OF 2 SOUTH RIDGE P.B. 13 PG. 39  
 BLOCK 5 STRICKLAND SUBDIVISION P.B. 23 PG. 173  
 BLOCK C RIDGEWOOD HEIGHTS P.B. 14 PG. 44

101.91'  
 50°19'16"W  
 LOT 22  
 BLOCK 5  
 PLAT 2 OF 2  
 SOUTH RIDGE  
 P.B. 13 PG. 39