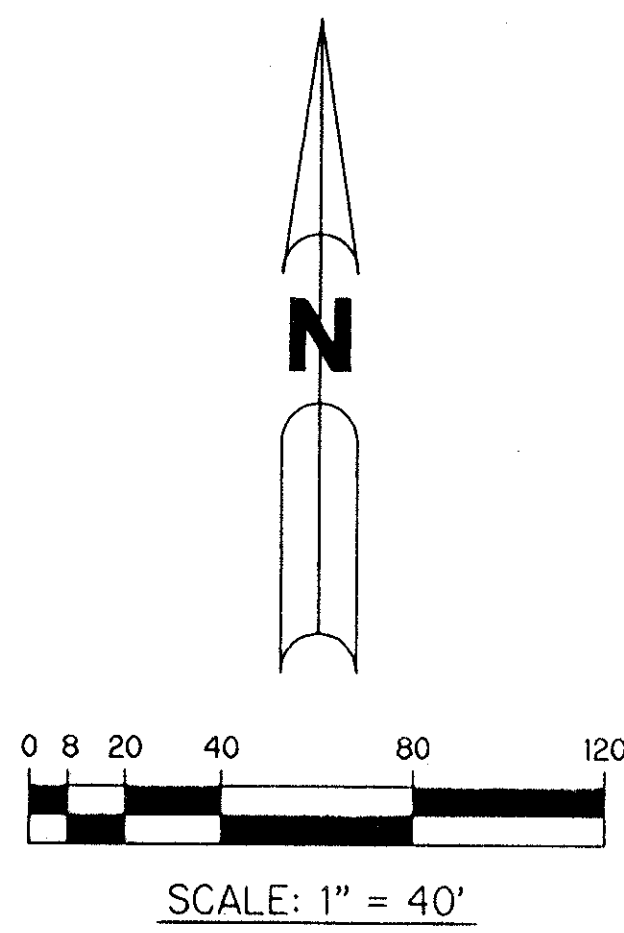


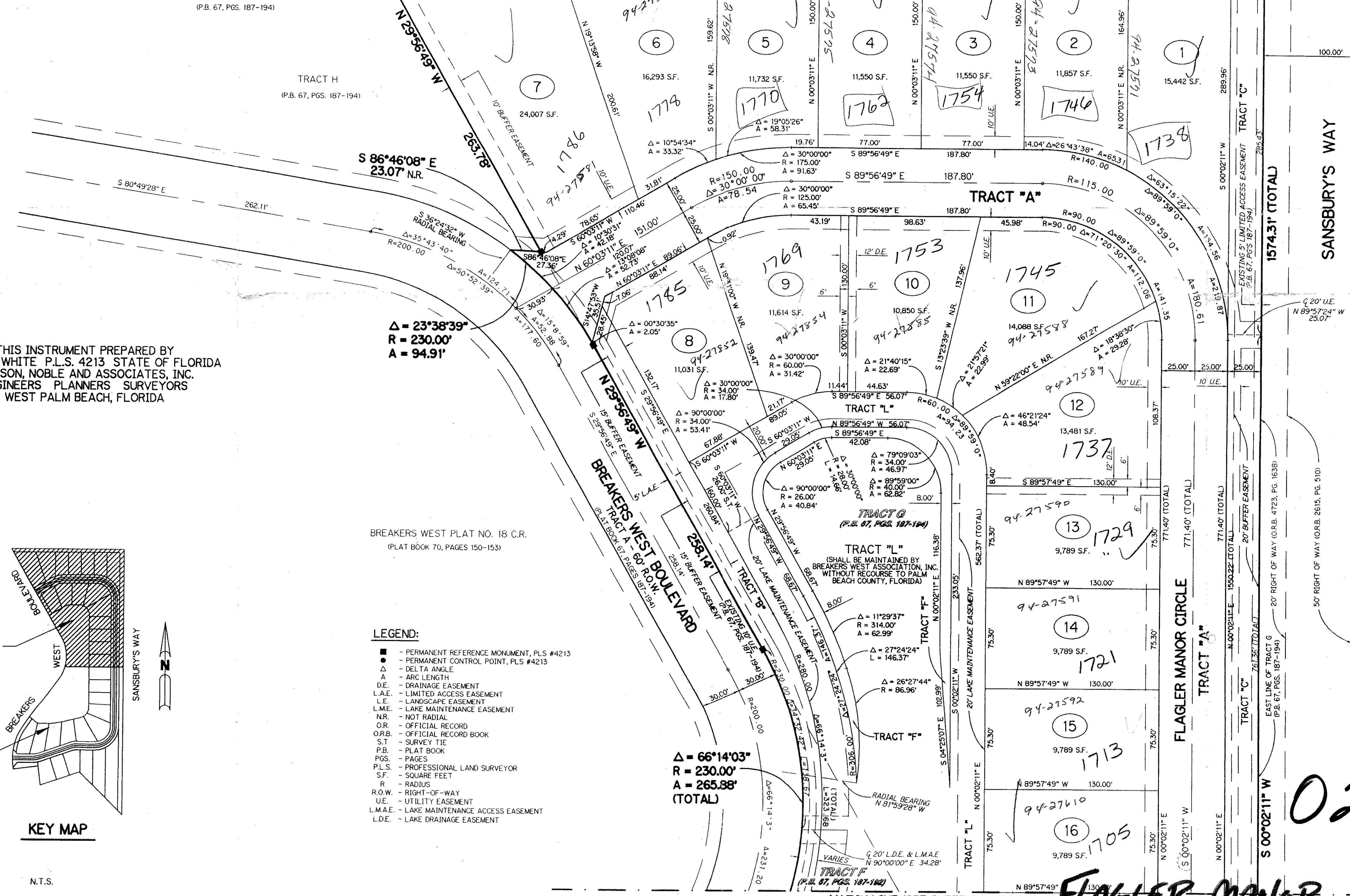
FLAGLER MANOR

A PARCEL OF LAND LYING IN SECTION 29 AND 30, TOWNSHIP 43 SOUTH, RANGE 42 EAST, SAID PARCEL ALSO BEING A REPLAT OF ALL OF TRACT F AND TRACT G OF PARCEL 3 AND A PORTION OF TRACT H OF PARCEL 3 ACCORDING TO THE PLAT OF BREAKERS WEST PLAT NO. 18, AS RECORDED IN PLAT BOOK 67, PAGES 187 THROUGH 194, INCLUSIVE OF THE PUBLIC RECORDS OF PALM BEACH COUNTY, FLORIDA.

SHEET 2 OF 3 FEBRUARY, 1994



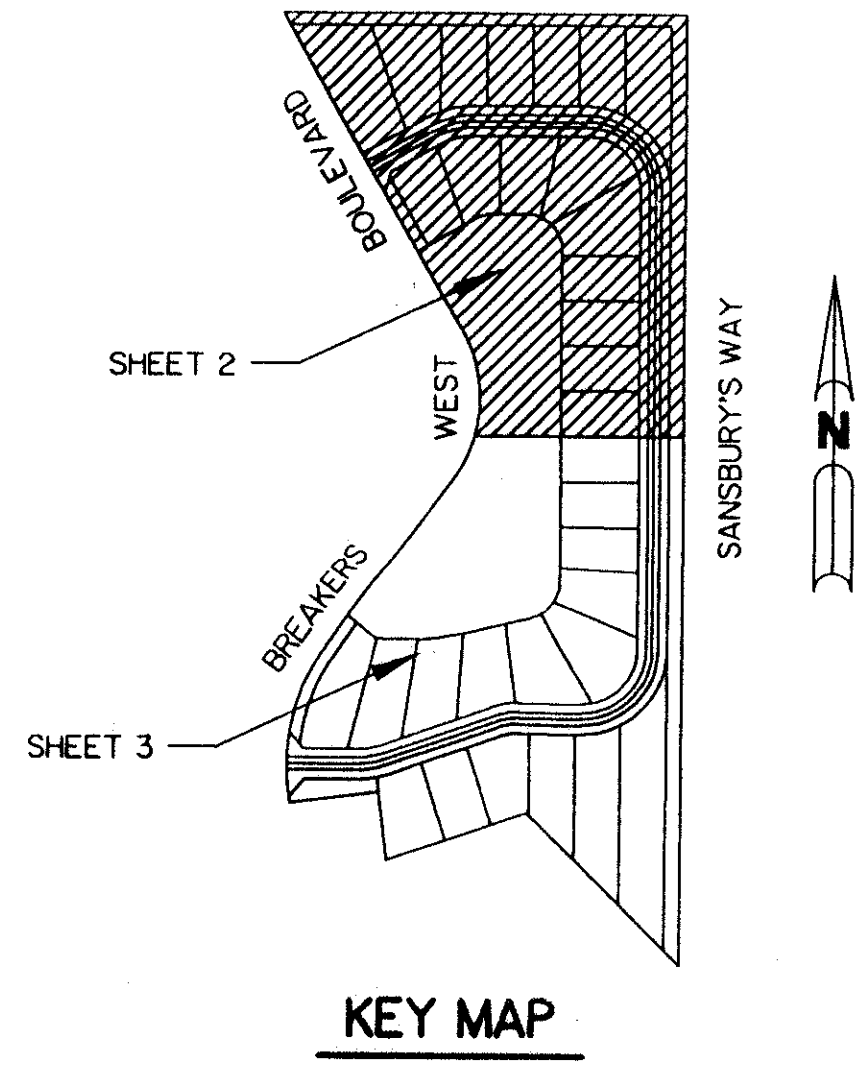
POINT OF BEGINNING
NORTHWEST CORNER OF TRACT G
(P.B. 67, PGS. 187-194)



THIS INSTRUMENT PREPARED BY
PERRY C. WHITE, P.L.S. 4213 STATE OF FLORIDA
LAWSON, NOBLE AND ASSOCIATES, INC.
ENGINEERS PLANNERS SURVEYORS
WEST PALM BEACH, FLORIDA

BREAKERS WEST PLAT NO. 18 C.R.
(PLAT BOOK 70, PAGES 150-153)

- LEGEND:**
- - PERMANENT REFERENCE MONUMENT, PLS #4213
 - - PERMANENT CONTROL POINT, PLS #4213
 - Δ - DELTA ANGLE
 - A - ARC LENGTH
 - D.E. - DRAINAGE EASEMENT
 - L.A.E. - LIMITED ACCESS EASEMENT
 - L.E. - LANDSCAPE EASEMENT
 - L.M.E. - LAKE MAINTENANCE EASEMENT
 - N.R. - NOT RADIAL
 - O.R. - OFFICIAL RECORD
 - O.R.B. - OFFICIAL RECORD BOOK
 - S.T. - SURVEY TIE
 - P.B. - PLAT BOOK
 - P.S. - PAGES
 - P.L.S. - PROFESSIONAL LAND SURVEYOR
 - S.F. - SQUARE FEET
 - R - RADIUS
 - R.O.W. - RIGHT-OF-WAY
 - U.E. - UTILITY EASEMENT
 - L.M.A.E. - LAKE MAINTENANCE ACCESS EASEMENT
 - L.D.E. - LAKE DRAINAGE EASEMENT



KEY MAP

N.T.S.

PET. 73-219D
5/2/2/G

TRACT S
BREAKER'S WEST
PUD

PALM BEACH FARMS COMPANYS PLAT NO. 3
(PLAT BOOK 2, PAGES 45-54)

0217-020
72/163

FLAGLER MANOR

MATCH LINE (SEE SHEET 3)