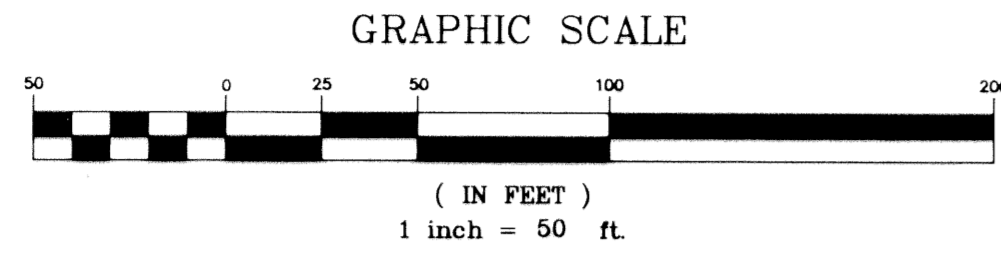


SABAL LAKES PHASE THREE

PREPARED BY
DAVID P. LINDLEY
OF
CAULFIELD and WHEELER, INC.
CONSULTING ENGINEERS - PLANNERS - SURVEYORS
7301-A WEST PALMETTO PARK ROAD, SUITE 100A
BOCA RATON, FLORIDA 33433 - (407)392-1991
SEPTEMBER - 1993

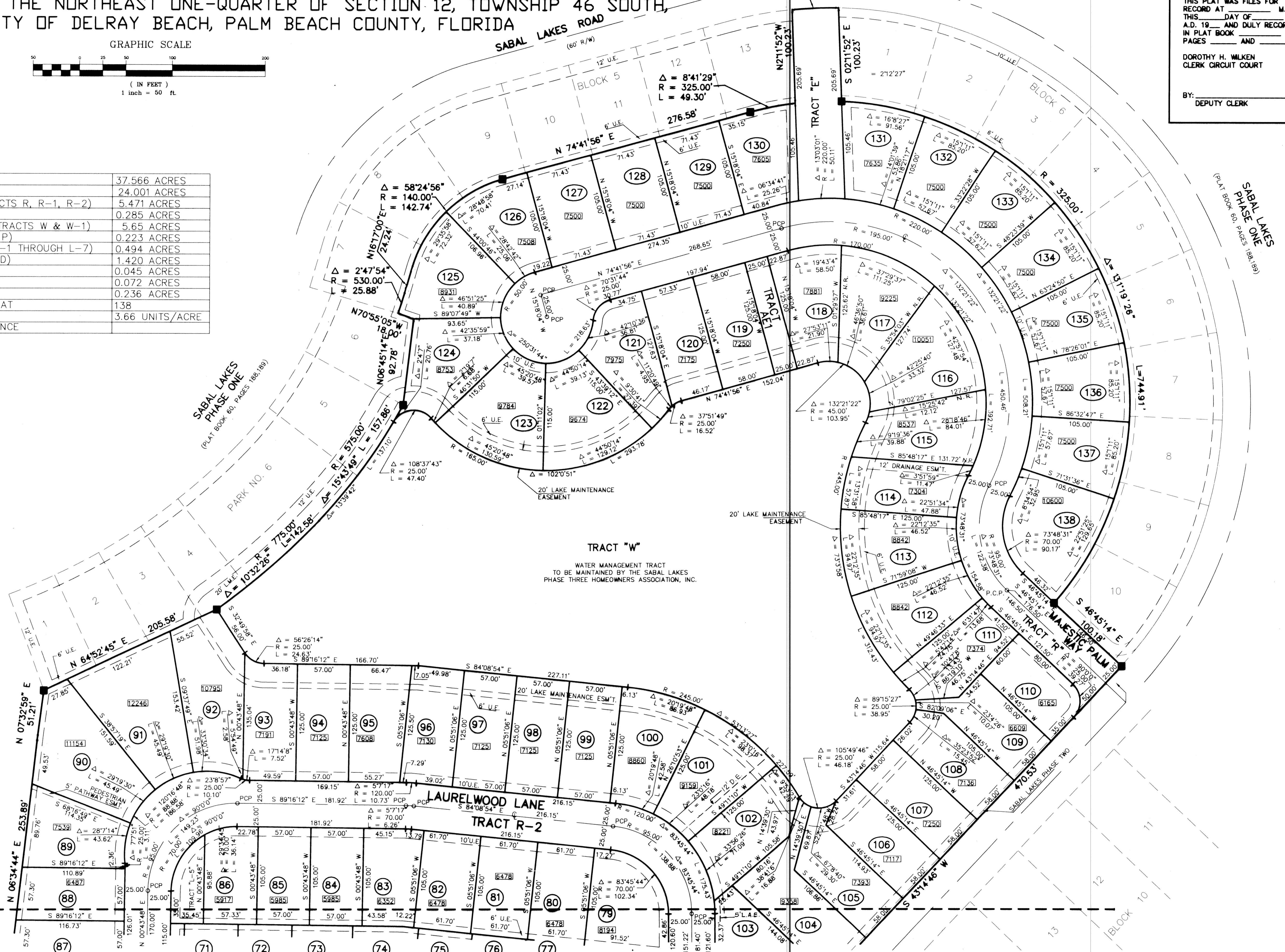
182

BEING A REPLAT OF A PORTION OF SABAL LAKES PHASE TWO, AS RECORDED IN PLAT BOOK 70 PAGES 176 AND 177 OF THE PUBLIC RECORDS OF PALM BEACH COUNTY, FLORIDA AND A PORTION OF THE NORTHEAST ONE-QUARTER OF SECTION 12, TOWNSHIP 46 SOUTH, RANGE 42 EAST, CITY OF DELRAY BEACH, PALM BEACH COUNTY, FLORIDA
SHEET 3 OF 3



TABULAR DATA

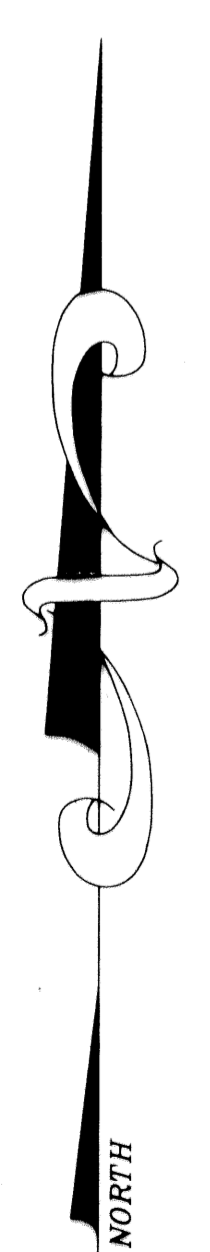
TOTAL AREA THIS PLAT	37.566 ACRES
AREA OF RESIDENTIAL	24.001 ACRES
AREA OF PRIVATE ROADWAY (TRACTS R, R-1, R-2)	5.471 ACRES
AREA OF RECREATION (TRACT F)	0.285 ACRES
AREA OF WATER MANAGEMENT (TRACTS W & W-1)	5.65 ACRES
AREA OF PASSIVE PARK (TRACT P)	0.223 ACRES
AREA OF OPEN SPACE (TRACTS L-1 THROUGH L-7)	0.494 ACRES
AREA OF R/W (SABAL LAKE ROAD)	1.420 ACRES
TRACT "L-S"	0.045 ACRES
TRACT AE1	0.072 ACRES
TRACT E	0.236 ACRES
TOTAL NUMBER OF LOTS THIS PLAT	138
DENSITY PROPOSED THIS PLAT	3.66 UNITS/ACRE
LAND USE SINGLE FAMILY RESIDENCE	



STATE OF FLORIDA
COUNTY OF PALM BEACH
THIS PLAT WAS FILED FOR
RECORD AT _____ M.
THIS _____ DAY OF _____
A.D. 19 _____ AND DULY RECORDED
IN PLAT BOOK _____ ON
PAGES _____ AND _____
DOROTHY H. WILKEN
CLERK CIRCUIT COURT
BY: _____
DEPUTY CLERK

SABAL LAKES
PHASE ONE
(PLAT BOOK 60, PAGES 188, 189)

SUBDIVISION # Sabal Lakes Phase 3
BOOK 72 PAGE 182
FLOOD ZONE -
ZONING -
QUAD # 36
ZIP CODE -
FILED NAME/ DELRAY TAZ 548



MATCH LINE
SEE SHEET 2 OF 3