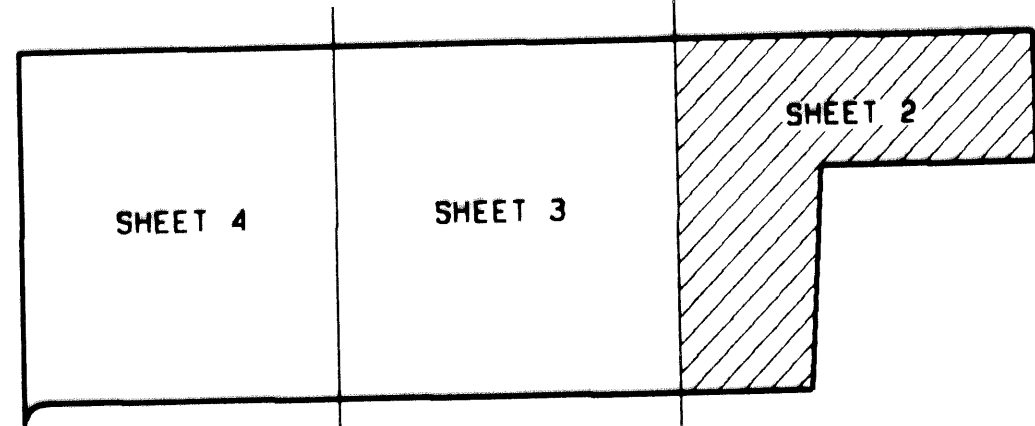


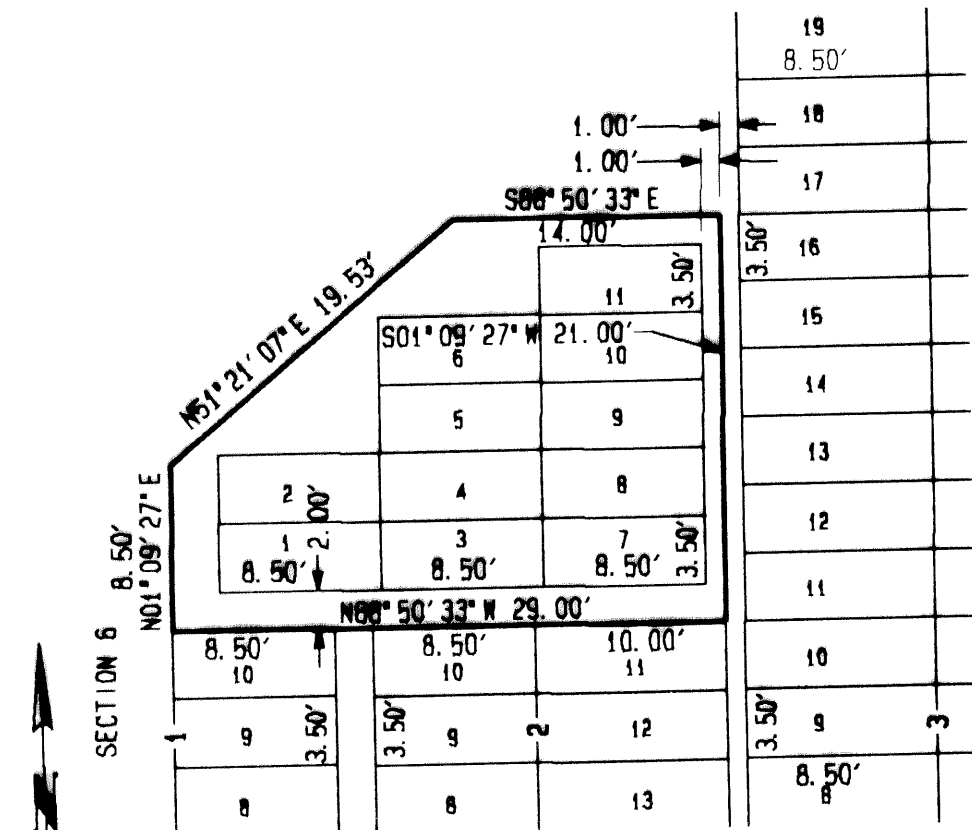
# ROYAL PALM MEMORIAL GARDENS PLAT FOUR

BEING A REPLAT OF A PORTION OF REPLAT OF PLAT NO. 1 GREENWOOD HILLS, AS RECORDED IN PLAT BOOK 27, PAGE 134 OF THE PUBLIC RECORDS OF PALM BEACH COUNTY, FLORIDA  
 IN PART OF SECTION 4, TOWNSHIP 43 SOUTH, RANGE 43 EAST  
 CITY OF WEST PALM BEACH, PALM BEACH COUNTY, FLORIDA  
 FEBRUARY, 1994 SHEET 2 OF 5

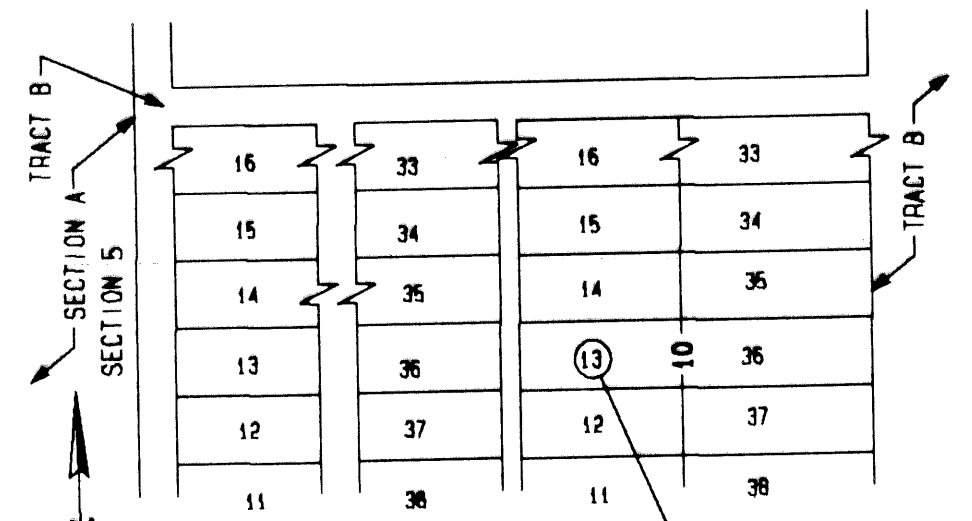
# 191



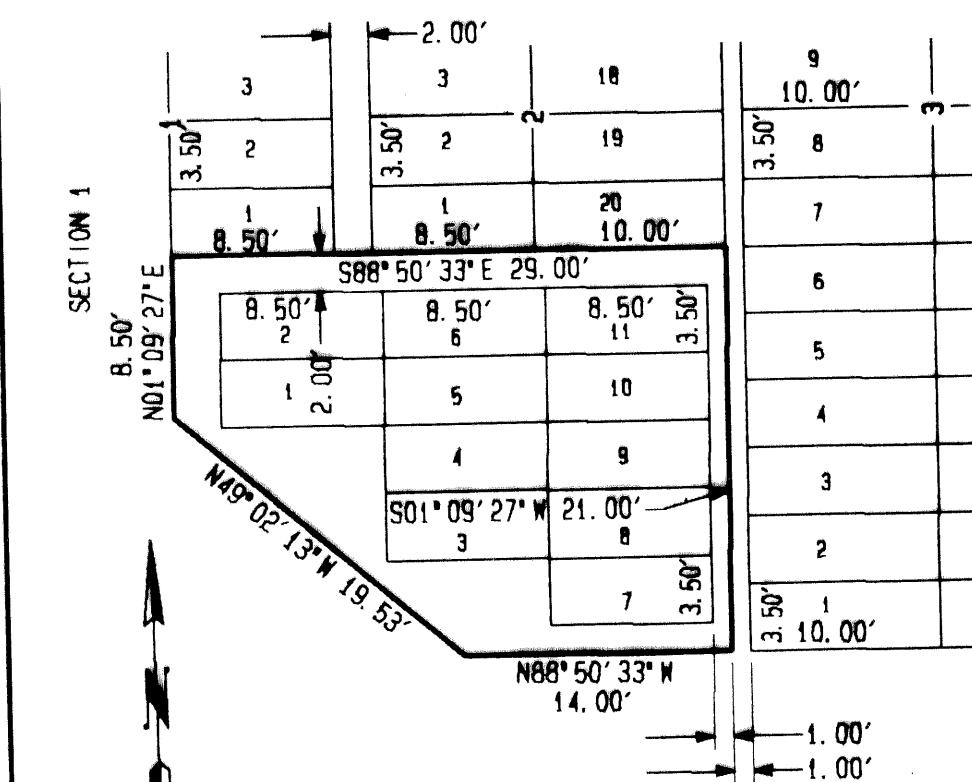
KEY MAP  
NOT TO SCALE



FAMILY ESTATE "C" DETAIL  
SCALE: 1" = 10'



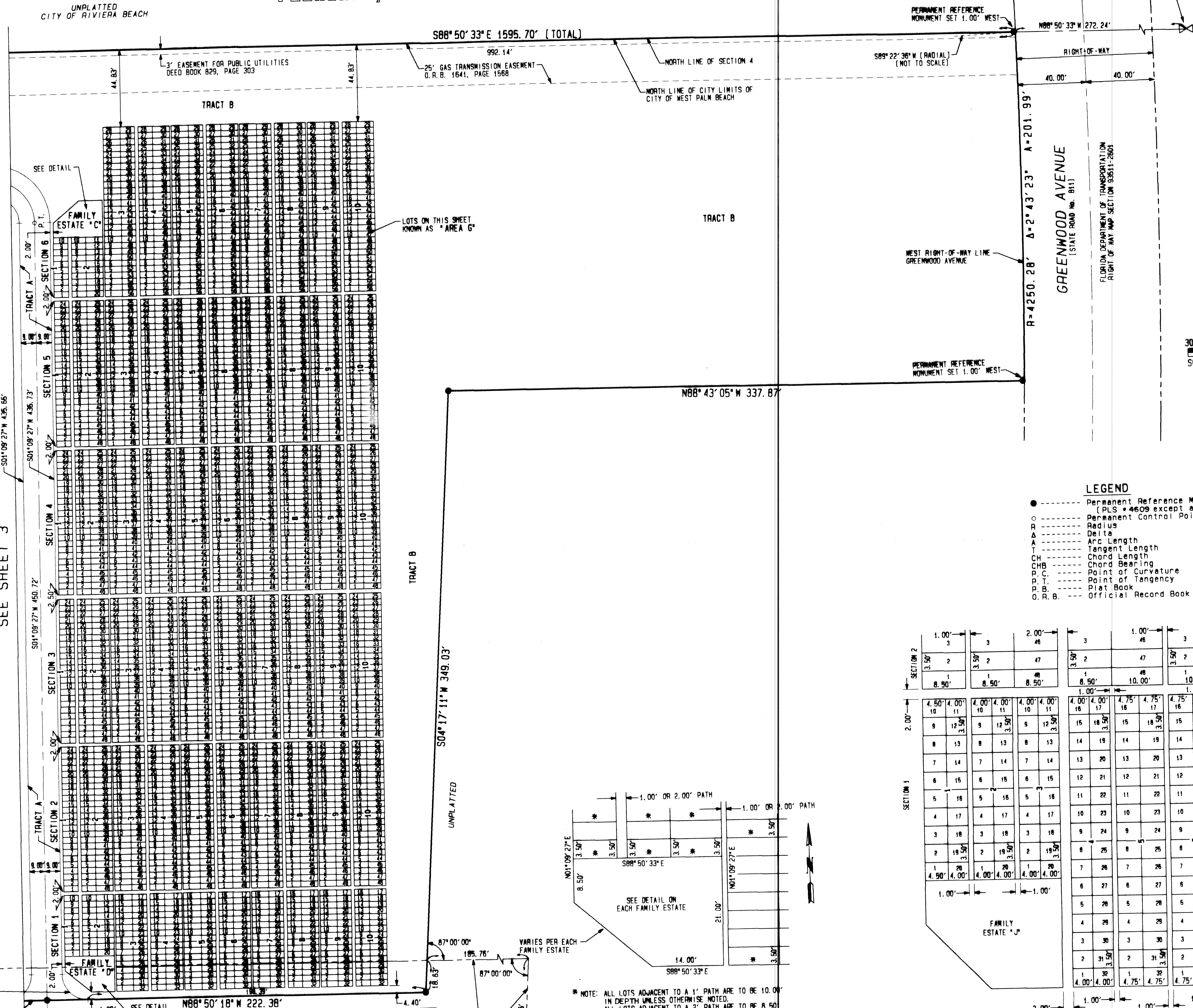
TYPICAL LOT DESIGNATION  
NOT TO SCALE



FAMILY ESTATE "D" DETAIL  
SCALE: 1" = 10'

NORTHERLY LIMITS OF  
"REPLAT OF PLAT NO. 1  
GREENWOOD HILLS"

N88°39'25"W 504.24' (TOTAL)



SEE SHEET 3

SEE SHEET 3

SEE DETAIL

LOTS ON THIS SHEET  
KNOWN AS "AREA G"

TRACT B

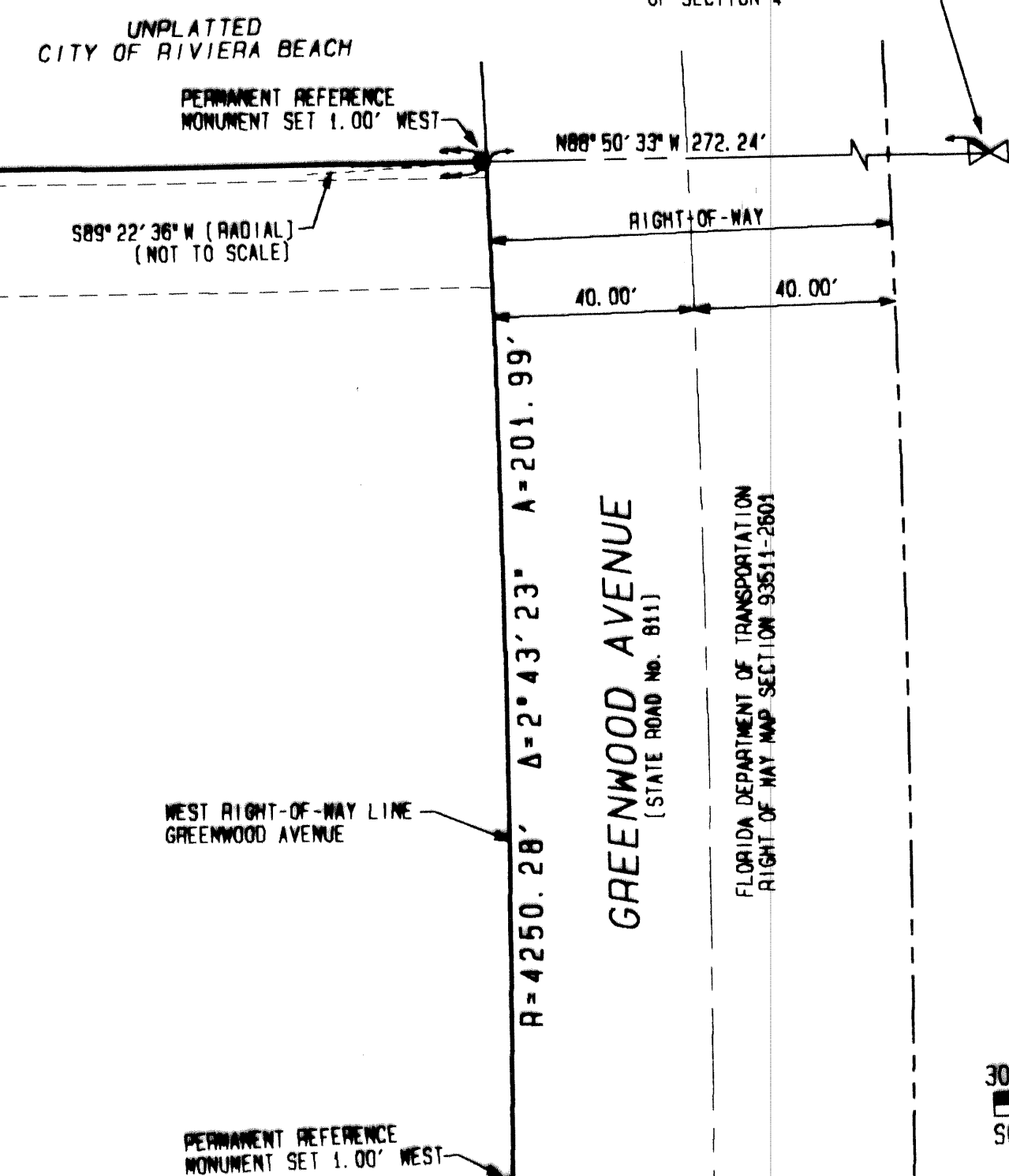
UNPLATTED

VARIABLES PER EACH  
FAMILY ESTATE

NORTHERLY LIMITS OF  
"REPLAT OF PLAT NO. 1  
GREENWOOD HILLS"

\* NOTE: ALL LOTS ADJACENT TO A 1" PATH ARE TO BE 10.0'  
IN DEPTH UNLESS OTHERWISE NOTED.  
ALL LOTS ADJACENT TO A 2" PATH ARE TO BE 8.50'  
IN DEPTH UNLESS OTHERWISE NOTED.  
ALL LOTS TO BE 3.50' IN WIDTH UNLESS OTHERWISE NOTED.

TYPICAL DIMENSIONING  
SCALE 1" = 10'



PERMANENT REFERENCE MONUMENT SET 1.00' WEST

PERMANENT REFERENCE MONUMENT SET 1.00' WEST

PERMANENT REFERENCE MONUMENT SET 1.00' WEST

PERMANENT REFERENCE MONUMENT SET 1.00' WEST

PERMANENT REFERENCE MONUMENT SET 1.00' WEST

PERMANENT REFERENCE MONUMENT SET 1.00' WEST

PERMANENT REFERENCE MONUMENT SET 1.00' WEST

PERMANENT REFERENCE MONUMENT SET 1.00' WEST

PERMANENT REFERENCE MONUMENT SET 1.00' WEST

PERMANENT REFERENCE MONUMENT SET 1.00' WEST

PERMANENT REFERENCE MONUMENT SET 1.00' WEST

PERMANENT REFERENCE MONUMENT SET 1.00' WEST

PERMANENT REFERENCE MONUMENT SET 1.00' WEST

PERMANENT REFERENCE MONUMENT SET 1.00' WEST

PERMANENT REFERENCE MONUMENT SET 1.00' WEST

PERMANENT REFERENCE MONUMENT SET 1.00' WEST

PERMANENT REFERENCE MONUMENT SET 1.00' WEST

PERMANENT REFERENCE MONUMENT SET 1.00' WEST

PERMANENT REFERENCE MONUMENT SET 1.00' WEST

PERMANENT REFERENCE MONUMENT SET 1.00' WEST

PERMANENT REFERENCE MONUMENT SET 1.00' WEST

PERMANENT REFERENCE MONUMENT SET 1.00' WEST

PERMANENT REFERENCE MONUMENT SET 1.00' WEST

PERMANENT REFERENCE MONUMENT SET 1.00' WEST

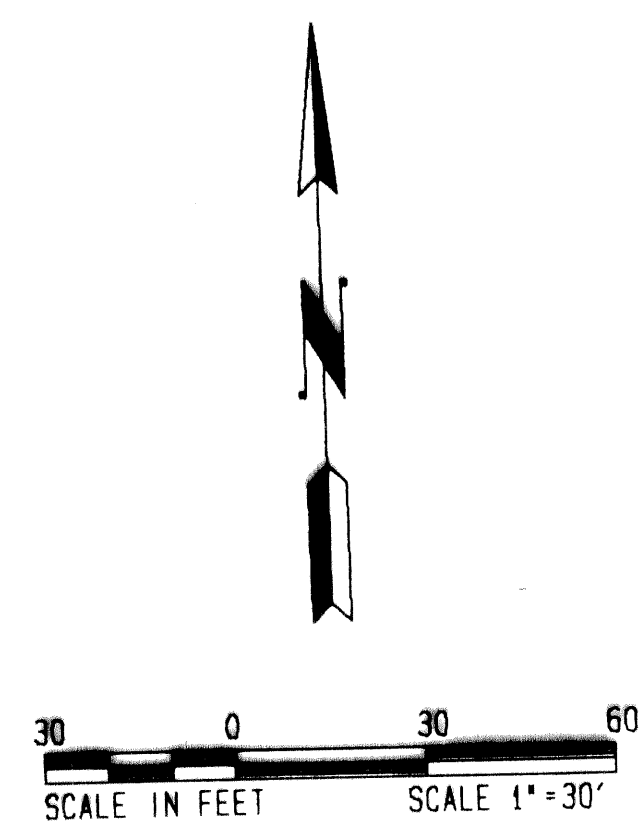
PERMANENT REFERENCE MONUMENT SET 1.00' WEST

PERMANENT REFERENCE MONUMENT SET 1.00' WEST

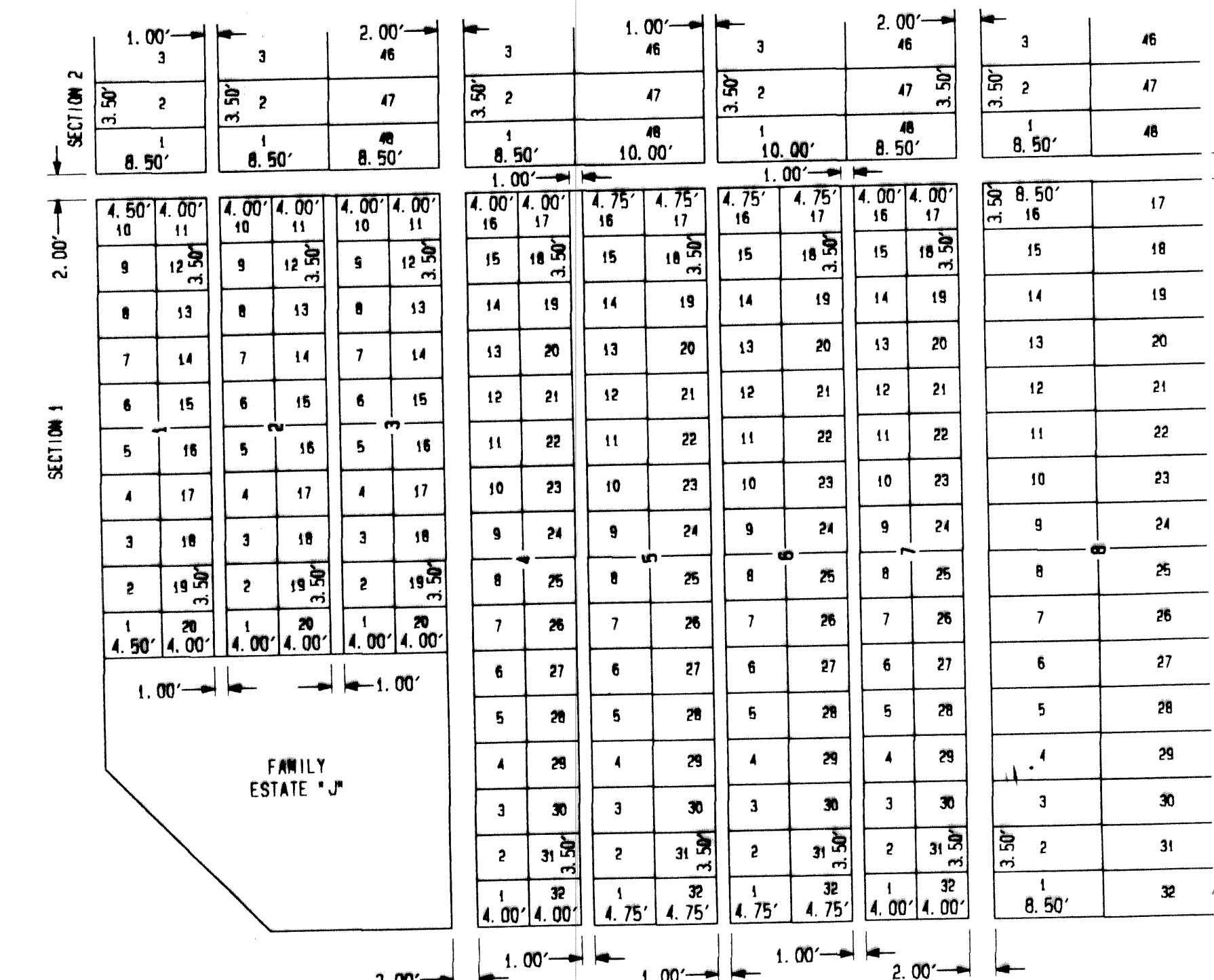
PERMANENT REFERENCE MONUMENT SET 1.00' WEST

PERMANENT REFERENCE MONUMENT SET 1.00' WEST

- LEGEND**
- --- Permanent Reference Monument (PLS #4609 except as noted)
  - --- Permanent Control Point
  - R --- Radius
  - A --- Delta
  - L --- Arc Length
  - T --- Tangent Length
  - CH --- Chord Length
  - CHB --- Chord Bearing
  - P.C. --- Point of Curvature
  - P.T. --- Point of Tangency
  - P.B. --- Plat Book
  - O.R.B. --- Official Record Book



SCALE IN FEET SCALE 1" = 30'



CREMATED REMAINS SITES DETAIL  
SCALE: 1" = 10'

ACCESSOR MAP 104  
ROYAL PALM MEMORIAL GARDENS PLAT ONE  
AND  
REPLAT OF PLAT NO. 1 GREENWOOD HILLS  
PLAT BOOK 27, PAGE 134

STATE OF FLORIDA  
COUNTY OF PALM BEACH  
This plat was filed for  
record at \_\_\_\_\_ M. this \_\_\_\_\_ day  
of \_\_\_\_\_ 1994, and duly  
recorded in Plat Book No. \_\_\_\_\_  
on Pages \_\_\_\_\_ thru \_\_\_\_\_  
By \_\_\_\_\_  
DOROTHY WILKEN  
Clerk Circuit Court  
D. C.