

# WOODFIELD CIRCLE PLAT THREE

IN PART OF SECTION 4, TOWNSHIP 47 SOUTH, RANGE 42 EAST  
CITY OF BOCA RATON, PALM BEACH COUNTY, FLORIDA

SHEET NO. 2 OF 3

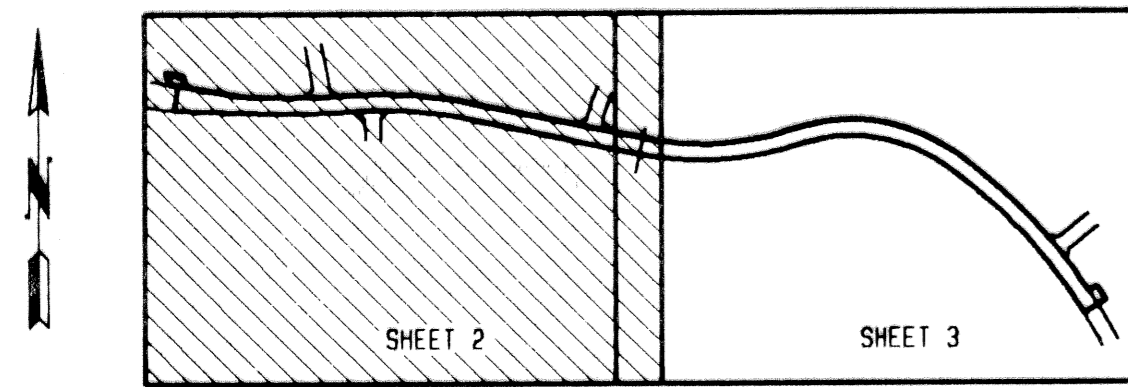
GEE & JENSON  
ENGINEERS - ARCHITECTS - PLANNERS, INC.  
WEST PALM BEACH, FLORIDA  
JANUARY 1994

60 0 60 120  
SCALE IN FEET SCALE 1" = 60'

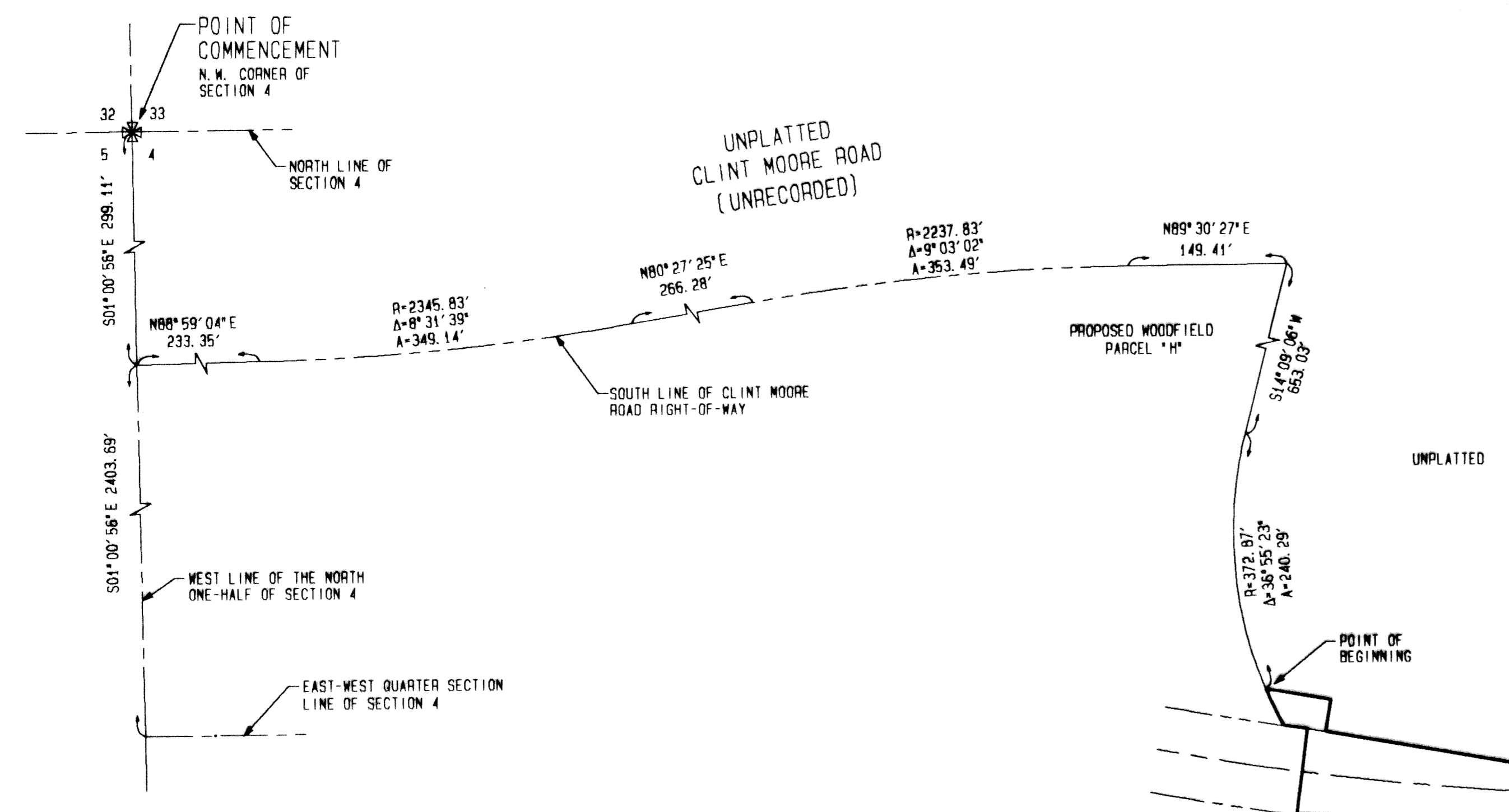
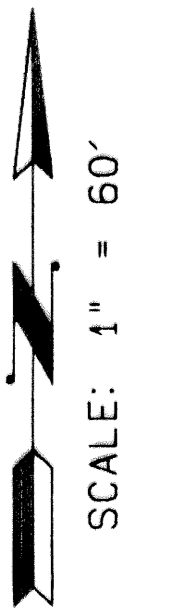
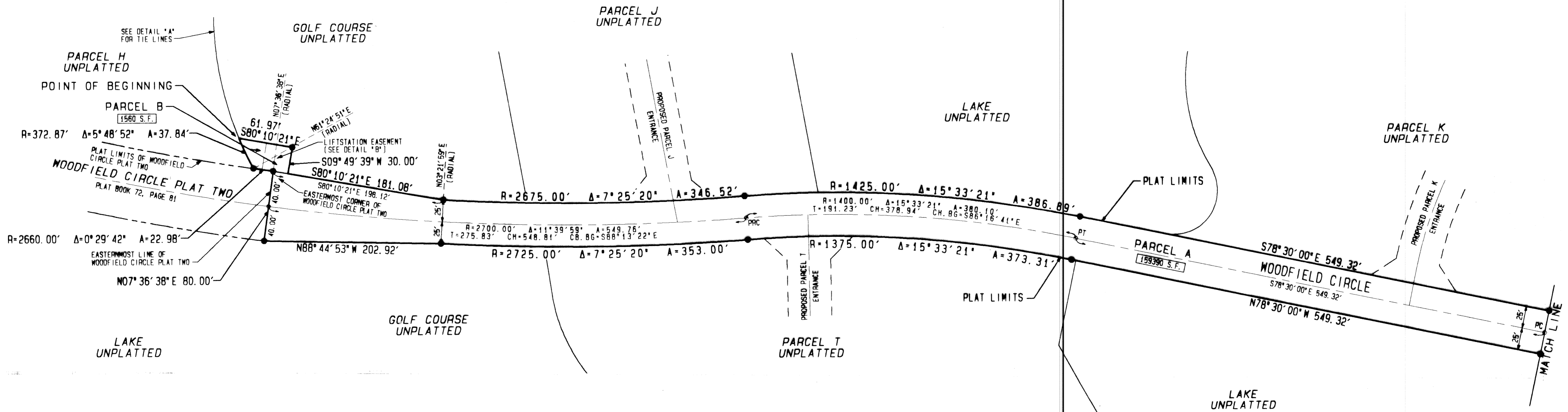
# 196

STATE OF FLORIDA  
COUNTY OF PALM BEACH  
This plat was filed for  
record at \_\_\_\_\_ M. this \_\_\_\_\_ day  
of \_\_\_\_\_ 1994, and duly  
recorded in Plat Book No. \_\_\_\_\_  
on Pages \_\_\_\_\_ thru \_\_\_\_\_.

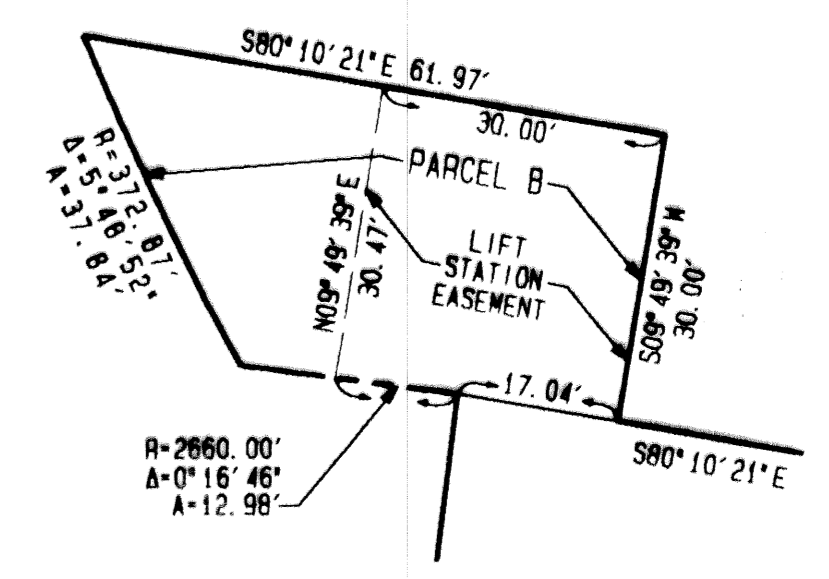
DOROTHY WILKEN  
Clerk Circuit Court  
By \_\_\_\_\_ D. C.



KEY MAP  
NOT TO SCALE



DETAIL "A"  
SCALE: 1" = 100'



DETAIL "B"  
SCALE: 1" = 20'

SUBDIVISION # Woodfield Circle P3  
BOOK 72 PAGE 196  
FLOOD ZONE - FLOOD MAP # -  
ROAD # - ZONING -  
SE - ZIP CODE -  
CITY NAME - BOCA

COMPUTED D. BACHOR  
DRAWN D. BACHOR  
CHECKED \_\_\_\_\_  
APPROVED \_\_\_\_\_  
JOB NO. 93-330